

NV NORTH
WATERFRONT

Lunel 2





North Waterfront

An exciting new destination for Belarus

The North Waterfront development is a bold new vision for a waterfront community in the heart of the capital that looks to the future whilst drawing inspiration from the neighborhood's rich history.

We have diverted the status quo towards prioritizing residents' well-being and experiences, focusing on the importance of quality amenities and resident's lifestyles by bringing the most incredible designers and architects to deliver world-class communities.

35
mins
From the
Airport

1
min
From the
Ring Road

30
mins
From the
Railway Station


25
mins
From the
City Center

15
mins
From the
National Library

10
mins
From the
Sports Palace

















- 
Exhibition Center
- 
Parks
- 
Ice Rink
- 
Schools
- 
Kid's Play Areas
- 
Dog Parks
- 
Cycling Track
- 
Kindergartens
- 
IT University
- 
Supermarkets
- 
Fishing Pier
- 
Medical Centers

Lakeside Park

Residents of North Waterfront will be able to enjoy the modern and healthy environment created by the Lakeside Park.

The park offers a wonderful atmosphere perfect for relaxing and socializing amidst a captivating blend of natural beauty and immersive attractions.









-  Green Parks
-  Art Sculptures
-  Sports Areas
-  Urban Beach
-  Cycling Track
-  Jogging Trail
-  Picnic Areas
-  Cafes
-  Barbecue Areas
-  Amphitheater
-  Kid's Play Area
-  Fishing Pier



Neighbourhood Square

Redefining lifestyle with an open park catering to the neighborhood, with its bespoke details, curated retail boutiques and avant-garde dining experiences.

This pedestrian friendly space located in the neighboring district will also become a space for entertainment and special events.

- Retail
- Restaurants & Cafes
- Outdoor Events
- Picnic Areas
- Art Sculptures
- Green Lawn
- Kid's Play Area
- Christmas Tree



Residential Club

North Waterfront provides a unique experience that combines the benefits of neighborhood living with exclusive amenities and services.

The Residential Club, conveniently situated within a walking distance, offers elegantly styled spaces exclusive to residents, enriching contemporary living with comfort and effortless access to premium amenities.

- Cinema
- Event Room
- Gym
- Cafe
- Sauna
- Games Area
- Children's Place
- Meeting Rooms



Celebrate life's moments with loved ones in the fully equipped events lounge.



Enjoy a quiet evening in the private cinema of the Residential Club – a space designed for connection and comfort.



School

At the heart of the neighborhood, a new school will open its doors - a place where knowledge, care and comfort converge.

Spacious classrooms, science labs, a library, gyms and two swimming pools form a well-rounded educational environment.

Designed to the highest modern standards, this school will become an integral part of the neighborhood - a foundation for confident futures.



Swimming pools



Library



Football Stadium



Basketball court



Gym



Laboratories



Kid's Play Area



Volleyball courts



Lunel 2





Lunel 2

LUNEL 2 is a flagship home that combines modern architecture, privacy, and a high level of comfort. The spaces are designed to meet the needs of the modern family, featuring well-planned infrastructure, a secure environment, convenient walking access to key amenities, and efficient logistics.

Attention to detail, carefully considered layouts, and high-quality finishes create an atmosphere of confidence and stability.





LOVE WOVEN INTO EVERY DETAIL

Restaurant del Cuore

New neighborhood continues the vision of North Waterfront as a thoughtfully planned residential destination.

With schools, kindergartens, wellness and education centres, green trails, shops and cafés - everything is close at hand.



A PLACE WHERE DREAMS TAKE SHAPE

LUNEL 2 is a place for those who aspire to more. It cultivates a community of successful and driven individuals united by high standards of living and mutual respect. This is not just a residence – it is a symbol of status, prestige, and confidence in the future.





Interiors

The spaces of LUNEL 2 are designed not only for comfortable living but also for fostering new connections. Lounge areas and cozy relaxation zones create a welcoming environment for both spontaneous and planned meetings.

- Designer lobbies with panoramic glazing & elegant styling
- Elegantly designed hallways
- Dedicated storage for strollers
- Pet paw-washing facilities

CRAFTED FOR YOU



Each apartment at LUNEL 2 is a canvas for your dreams and ideas. Spaces that flow with your lifestyle and inspire new discoveries. Tall ceilings and expansive windows stretch the bounds of possibility, filling your home with light and fresh air.

1
BEDROOM

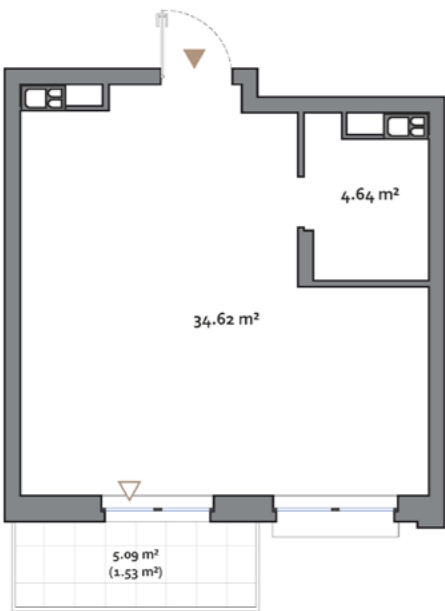
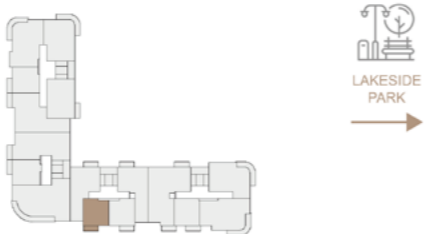
NW NORTH
WATERFRONT

Lunel 2

1 BEDROOM
TYPE A

APARTMENT AREA.....39.26 m² - 40.13 m²
BALCONY AREA.....5.07 (1.52 m²) - 5.17 (1.55 m²)
NET AREA.....40.78 m² - 41.68 m²

KEY PLAN 2-10 FLOORS



Disclaimer

1. All room dimensions are in metric and measured to structural elements and exclude wall finishes and construction tolerances.
2. All dimensions have been provided by our consultant architects.
3. All materials, dimensions, features and amenities are approximate at the time of printing.
4. Actual area may vary from stated area and unit direction may vary from unit to unit. Drawings not to scale. The developer reserves the right to make revisions to the floor plans and any features, materials, dimensions, drawings and amenities mentioned in this brochure without notice.

2
BEDROOM

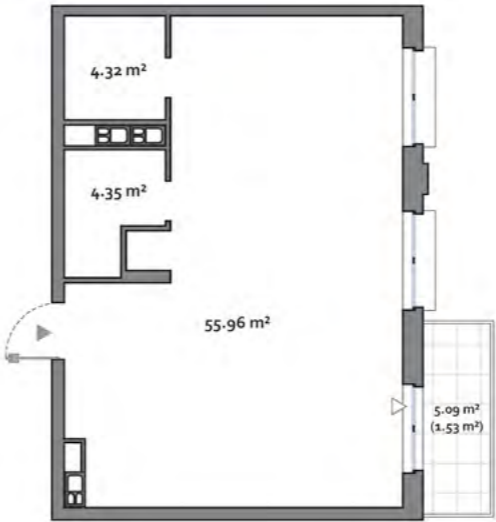
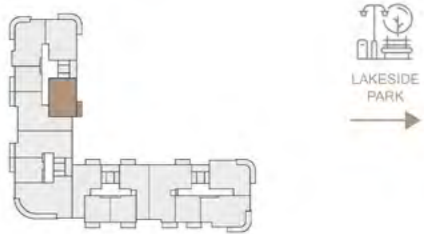
NW NORTH
WATERFRONT

Lunel 2

2 BEDROOM
TYPE A

APARTMENT AREA.....64.63 m²
BALCONY AREA.....5.09 (1.53 m²)
NET AREA.....66.16 m²

KEY PLAN 2-8 FLOORS



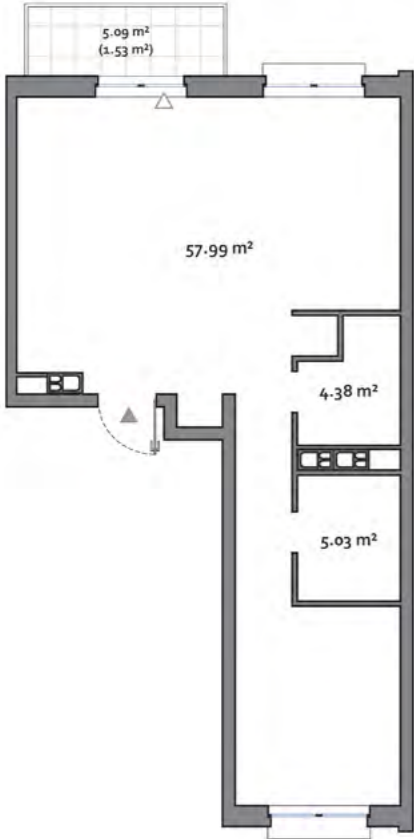
Disclaimer

1. All room dimensions are in metric and measured to structural elements and exclude wall finishes and construction tolerances.
2. All dimensions have been provided by our consultant architects.
3. All materials, dimensions, features and amenities are approximate at the time of printing.
4. Actual area may vary from stated area and unit direction may vary from unit to unit. Drawings not to scale. The developer reserves the right to make revisions to the floor plans and any features, materials, dimensions, drawings and amenities mentioned in this brochure without notice.

Lunel 2

2 BEDROOM
TYPE B

APARTMENT AREA.....67.40 m² - 67.62 m²
BALCONY AREA.....4.98 (1.49 m²) - 5.09 (1.53 m²)
NET AREA.....67.62 m² - 69.15 m²



KEY PLAN 2-10 FLOORS



Disclaimer

1. All room dimensions are in metric and measured to structural elements and exclude wall finishes and construction tolerances.
2. All dimensions have been provided by our consultant architects.
3. All materials, dimensions, features and amenities are approximate at the time of printing.
4. Actual area may vary from stated area and unit direction may vary from unit to unit. Drawings not to scale. The developer reserves the right to make revisions to the floor plans and any features, materials, dimensions, drawings and amenities mentioned in this brochure without notice.

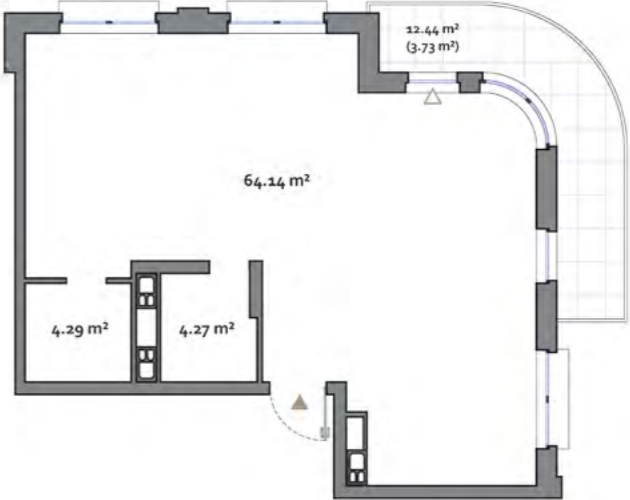
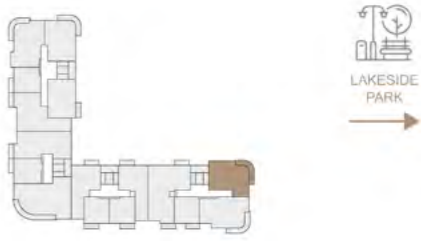
Lunel 2

2 BEDROOM
TYPE C

APARTMENT AREA.....72.70 m² - 73.40 m²
BALCONY AREA.....12.27 (3.68 m²) - 12.44 (3.73 m²)
NET AREA.....73.40 m² - 76.43 m²



KEY PLAN 1-8 FLOORS



Disclaimer

1. All room dimensions are in metric and measured to structural elements and exclude wall finishes and construction tolerances.
2. All dimensions have been provided by our consultant architects.
3. All materials, dimensions, features and amenities are approximate at the time of printing.
4. Actual area may vary from stated area and unit direction may vary from unit to unit. Drawings not to scale. The developer reserves the right to make revisions to the floor plans and any features, materials, dimensions, drawings and amenities mentioned in this brochure without notice.

3
BEDROOM

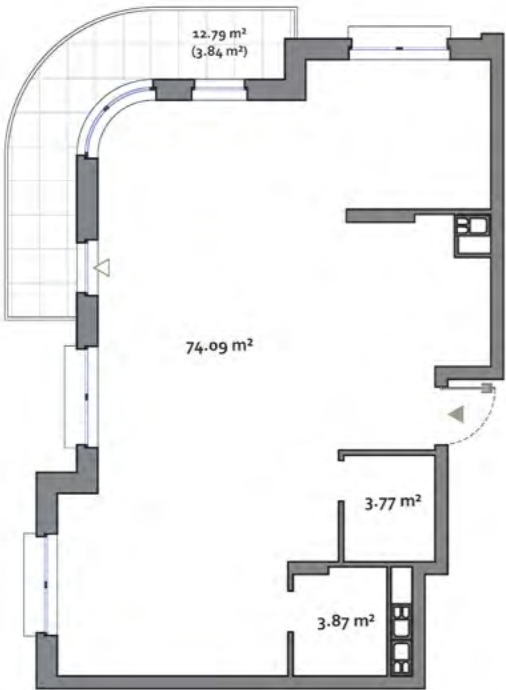
NVW NORTH
WATERFRONT

Lunel 2

3 BEDROOM
TYPE A

APARTMENT AREA.....81.73 m² - 82.35 m²
BALCONY AREA.....12.62 (3.79 m²) - 12.79 (3.84 m²)
NET AREA.....82.35 m² - 85.57 m²

KEY PLAN 1-8 FLOORS



Disclaimer

1. All room dimensions are in metric and measured to structural elements and exclude wall finishes and construction tolerances.
2. All dimensions have been provided by our consultant architects.
3. All materials, dimensions, features and amenities are approximate at the time of printing.
4. Actual area may vary from stated area and unit direction may vary from unit to unit. Drawings not to scale. The developer reserves the right to make revisions to the floor plans and any features, materials, dimensions, drawings and amenities mentioned in this brochure without notice.

3
BEDROOM

NVW NORTH
WATERFRONT

Lunel 2

3 BEDROOM
TYPE B

APARTMENT AREA.....82.75 m² - 83.92 m²
BALCONY AREA.....13.45 (4.04 m²) - 13.62 (4.09 m²)
NET AREA.....83.92 m² - 86.84 m²

KEY PLAN 1-8 FLOORS



Disclaimer

1. All room dimensions are in metric and measured to structural elements and exclude wall finishes and construction tolerances.
2. All dimensions have been provided by our consultant architects.
3. All materials, dimensions, features and amenities are approximate at the time of printing.
4. Actual area may vary from stated area and unit direction may vary from unit to unit. Drawings not to scale. The developer reserves the right to make revisions to the floor plans and any features, materials, dimensions, drawings and amenities mentioned in this brochure without notice.

3
BEDROOM

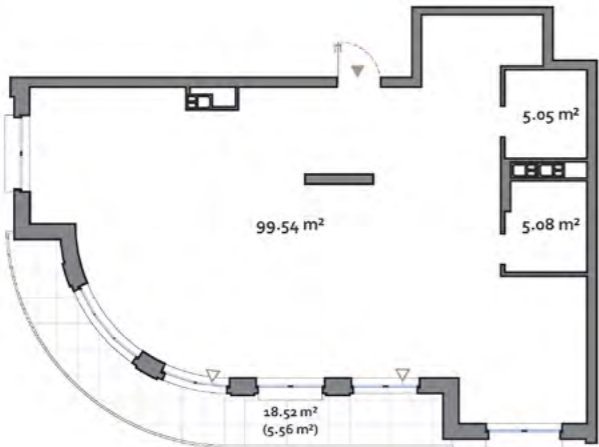
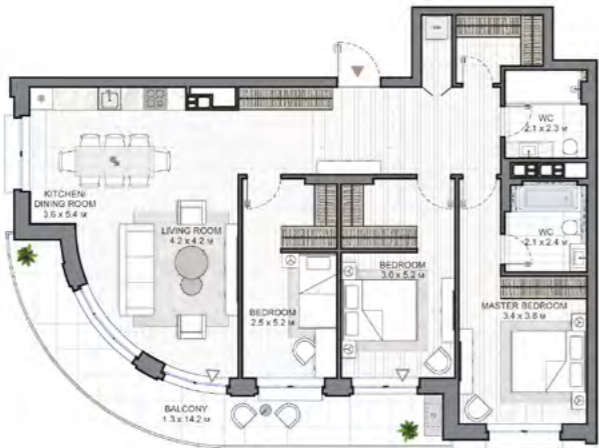
NVW NORTH
WATERFRONT

Lunel 2

3 BEDROOM
TYPE E

APARTMENT AREA.....109.67 m²
BALCONY AREA.....18.37 (5.51 m²) - 18.52 (5.56 m²)
NET AREA.....115.18 m² - 115.23 m²

KEY PLAN 2-10 FLOORS



Disclaimer

1. All room dimensions are in metric and measured to structural elements and exclude wall finishes and construction tolerances.
2. All dimensions have been provided by our consultant architects.
3. All materials, dimensions, features and amenities are approximate at the time of printing.
4. Actual area may vary from stated area and unit direction may vary from unit to unit. Drawings not to scale. The developer reserves the right to make revisions to the floor plans and any features, materials, dimensions, drawings and amenities mentioned in this brochure without notice.

4
BEDROOM

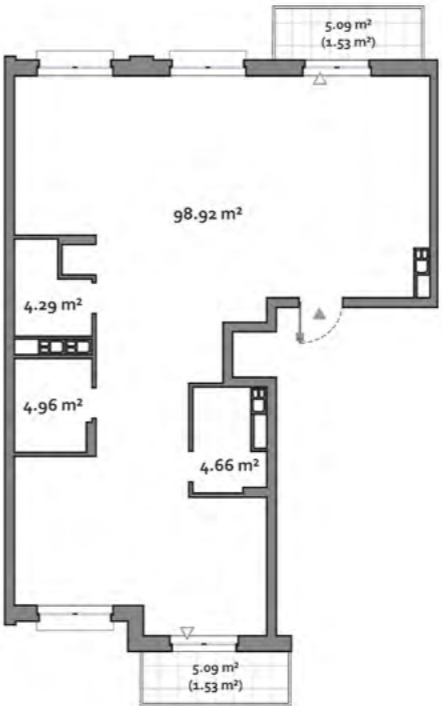
NVW NORTH
WATERFRONT

Lunel 2

4 BEDROOM
TYPE A

APARTMENT AREA.....112.83 m²
BALCONY AREA.....5.09 (1.53 m²) - 10.18 (3.06 m²)
NET AREA.....114.36 m² - 115.89 m²

KEY PLAN 2-8 FLOORS



Disclaimer

1. All room dimensions are in metric and measured to structural elements and exclude wall finishes and construction tolerances.
2. All dimensions have been provided by our consultant architects.
3. All materials, dimensions, features and amenities are approximate at the time of printing.
4. Actual area may vary from stated area and unit direction may vary from unit to unit. Drawings not to scale. The developer reserves the right to make revisions to the floor plans and any features, materials, dimensions, drawings and amenities mentioned in this brochure without notice.

Lunel 2

NORTHWATERFRONT.BY



International number: +375 17 311-6888

Toll-free number: 8-801-100-3888

North Waterfront Sales Center,

Sverdlova str. 11, Minsk

Tsvirko str. 84, Minsk

NV NORTH
WATERFRONT