



# Eola 2





# North Waterfront

An exciting new destination for Belarus

The North Waterfront development is a bold new vision for a waterfront community in the heart of the capital that looks to the future whilst drawing inspiration from the neighborhood's rich history.

We have diverted the status quo towards prioritizing residents' well-being and experiences, focusing on the importance of quality amenities and resident's lifestyles by bringing the most incredible designers and architects to deliver world-class communities.



35

mins  
From the  
Airport

1

min  
From the  
Ring Road

30

mins  
From the  
Railway Station

25

mins  
From the  
City Center

15

mins  
From the  
National Library


10

mins  
From the  
Sports Palace



















-   
Exhibition Center
-   
Parks
-   
Ice Rink
-   
Schools
-   
Kid's Play Areas
-   
Dog Parks
-   
Cycling Track
-   
Kindergartens
-   
IT University
-   
Supermarkets
-   
Fishing Pier
-   
Medical Centers



# Lakeside Park

Residents of North Waterfront will be able to enjoy the modern and healthy environment created by the Lakeside Park.

The park offers a wonderful atmosphere perfect for relaxing and socializing amidst a captivating blend of natural beauty and immersive attractions.

-  Green Parks
-  Art Sculptures
-  Sports Areas
-  Urban Beach
-  Cycling Track
-  Jogging Trail
-  Picnic Areas
-  Cafes
-  Barbecue Areas
-  Amphitheater
-  Kid's Play Area
-  Fishing Pier







# Neighbourhood Square

Redefining lifestyle with an open park catering to the neighborhood, with its bespoke details, curated retail boutiques and avant-garde dining experiences.

This pedestrian friendly space located in the neighboring district will also become a space for entertainment and special events.

- |  |   |   |  |
|--|---|---|--|
|  Retail         |  Restaurants & Cafes |  Outdoor Events  |  Picnic Areas   |
|  Art Sculptures |  Green Lawn          |  Kid's Play Area |  Christmas Tree |





# Residential Club

North Waterfront provides a unique experience that combines the benefits of neighborhood living with exclusive amenities and services.

The Residential Club, conveniently situated within a walking distance, offers elegantly styled spaces exclusive to residents, enriching contemporary living with comfort and effortless access to premium amenities.

- Cinema
- Event Room
- Gym
- Cafe
- Sauna
- Games Area
- Children's Place
- Meeting Rooms



Celebrate life's moments with loved ones in the fully equipped events lounge.



Enjoy a quiet evening in the private cinema of the Residential Club – a space designed for connection and comfort.





# School

At the heart of the neighborhood, a new school will open its doors - a place where knowledge, care and comfort converge.

Spacious classrooms, science labs, a library, gyms and two swimming pools form a well-rounded educational environment.

Designed to the highest modern standards, this school will become an integral part of the neighborhood - a foundation for confident futures.



Swimming pools



Library



Football Stadium



Basketball court



Gym



Laboratories



Kid's Play Area



Volleyball courts





# Eola 2





# Eola 2

At Eola 2, life is lived at its most beautiful pace. Wake up to refreshing morning strolls through the lush greenery of Lakeside Park, where every breath feels lighter and every moment feels serene. As the day unwinds, gather with loved ones by the water's edge, where golden sunsets, laughter, and lingering picnics turn simple evenings into cherished memories.

Here, time isn't hurried - it's treasured. Every day is an invitation to slow down, reconnect, and embrace the joy of truly living.







STEP INTO TIMELESS  
ELEGANCE



New neighborhood continues the vision of North Waterfront as a thoughtfully planned residential destination.

With schools, kindergartens, wellness and education centres, green trails, shops and cafés - everything is close at hand.







LIFE IS BEAUTIFUL





# Interiors

Step into the beautifully designed lobby - a space that instantly feels like the beginning of home. With its elegant design and warm ambiance, the lobby welcomes you each day with a sense of comfort and belonging.

- Designer lobbies with panoramic glazing
- Elegantly designed hallways
- Dedicated storage for strollers
- Pet paw-washing facilities





Create a space that reflects your life - exactly as you envision it. At Eola 2, versatile layouts let you shape a home that flows with your rhythm, meets your needs, and fulfills your dreams.



1  
BEDROOM

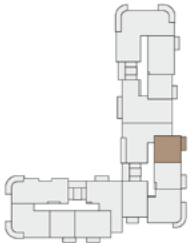
NVW NORTH  
WATERFRONT

Eola 2

1 BEDROOM  
TYPE C

APARTMENT AREA.....41.45 m<sup>2</sup> - 42.13 m<sup>2</sup>  
BALCONY AREA.....4.04 (1.21 m<sup>2</sup>)  
NET AREA.....41.45 m<sup>2</sup> - 43.34 m<sup>2</sup>

KEY PLAN 1-10 FLOORS



Disclaimer

1. All room dimensions are in metric and measured to structural elements and exclude wall finishes and construction tolerances.
2. All dimensions have been provided by our consultant architects.
3. All materials, dimensions, features and amenities are approximate at the time of printing.
4. Actual area may vary from stated area and unit direction may vary from unit to unit. Drawings not to scale. The developer reserves the right to make revisions to the floor plans and any features, materials, dimensions, drawings and amenities mentioned in this brochure without notice.

2  
BEDROOM

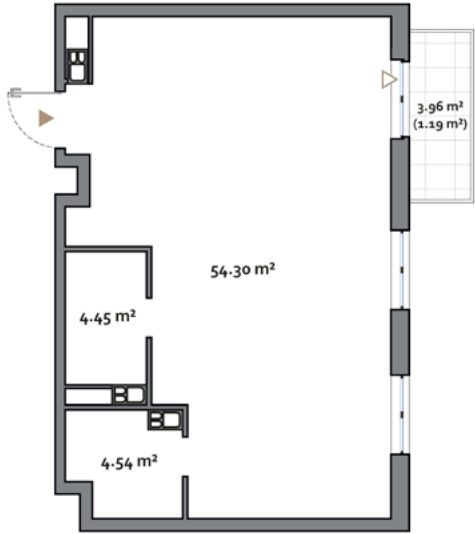
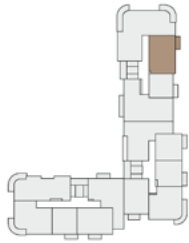
NVW NORTH  
WATERFRONT

Eola 2

2 BEDROOM  
TYPE D

APARTMENT AREA.....63.29 m<sup>2</sup>  
BALCONY AREA.....3.96 (1.19 m<sup>2</sup>)  
NET AREA.....63.29 m<sup>2</sup> - 64.48 m<sup>2</sup>

KEY PLAN 2-10 FLOORS



Disclaimer

1. All room dimensions are in metric and measured to structural elements and exclude wall finishes and construction tolerances.
2. All dimensions have been provided by our consultant architects.
3. All materials, dimensions, features and amenities are approximate at the time of printing.
4. Actual area may vary from stated area and unit direction may vary from unit to unit. Drawings not to scale. The developer reserves the right to make revisions to the floor plans and any features, materials, dimensions, drawings and amenities mentioned in this brochure without notice.



2  
BEDROOM

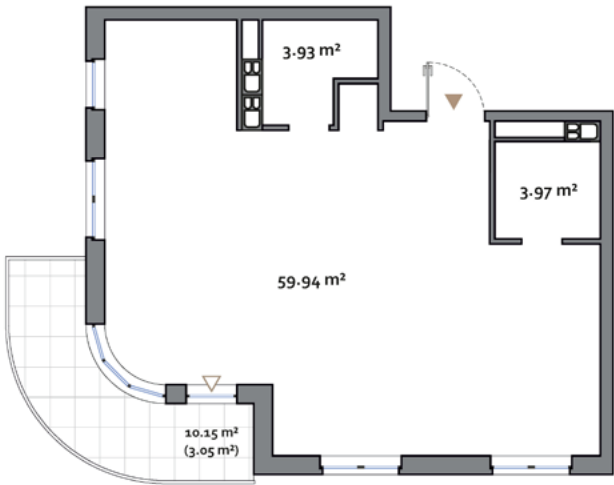
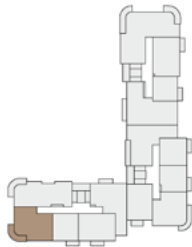
NW NORTH  
WATERFRONT

Eola 2

2 BEDROOM  
TYPE F

APARTMENT AREA.....67.25 m<sup>2</sup> - 67.84 m<sup>2</sup>  
BALCONY AREA.....10.15 (3.05 m<sup>2</sup>)  
NET AREA.....67.25 m<sup>2</sup> - 70.89 m<sup>2</sup>

KEY PLAN 1-8 FLOORS



Disclaimer

1. All room dimensions are in metric and measured to structural elements and exclude wall finishes and construction tolerances.
2. All dimensions have been provided by our consultant architects.
3. All materials, dimensions, features and amenities are approximate at the time of printing.
4. Actual area may vary from stated area and unit direction may vary from unit to unit. Drawings not to scale. The developer reserves the right to make revisions to the floor plans and any features, materials, dimensions, drawings and amenities mentioned in this brochure without notice.

3  
BEDROOM

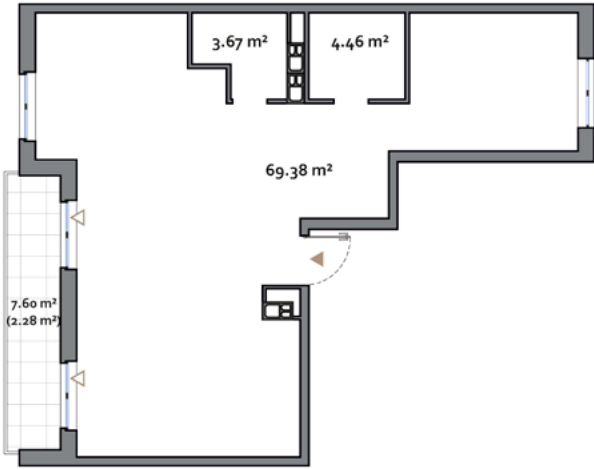
NW NORTH  
WATERFRONT

Eola 2

3 BEDROOM  
TYPE A

APARTMENT AREA.....77.51 m<sup>2</sup>  
BALCONY AREA.....7.60 (2.28 m<sup>2</sup>)  
NET AREA.....77.51 m<sup>2</sup> - 79.79 m<sup>2</sup>

KEY PLAN 2-10 FLOORS



Disclaimer

1. All room dimensions are in metric and measured to structural elements and exclude wall finishes and construction tolerances.
2. All dimensions have been provided by our consultant architects.
3. All materials, dimensions, features and amenities are approximate at the time of printing.
4. Actual area may vary from stated area and unit direction may vary from unit to unit. Drawings not to scale. The developer reserves the right to make revisions to the floor plans and any features, materials, dimensions, drawings and amenities mentioned in this brochure without notice.



3  
BEDROOM

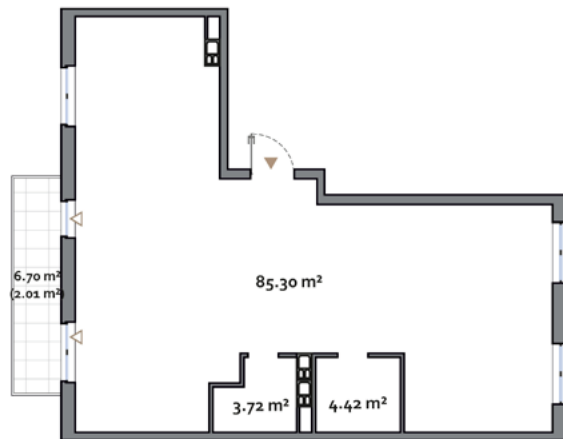
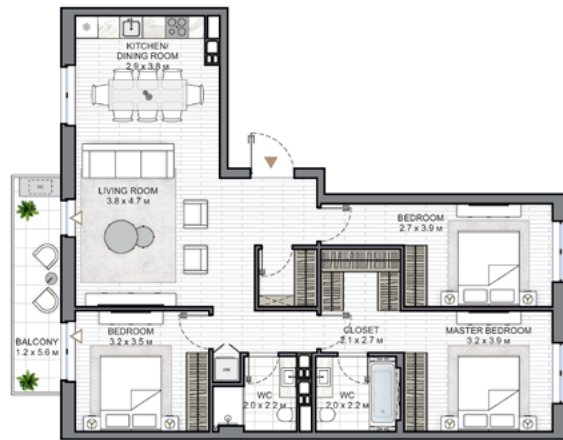
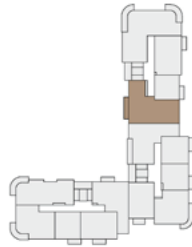
NVW NORTH  
WATERFRONT

Eola 2

3 BEDROOM  
TYPE C

APARTMENT AREA.....93.44 m<sup>2</sup> - 93.64 m<sup>2</sup>  
BALCONY AREA.....6.70 (2.01 m<sup>2</sup>)  
NET AREA.....93.44 m<sup>2</sup> - 95.45 m<sup>2</sup>

KEY PLAN 1-10 FLOORS



Disclaimer

1. All room dimensions are in metric and measured to structural elements and exclude wall finishes and construction tolerances.
2. All dimensions have been provided by our consultant architects.
3. All materials, dimensions, features and amenities are approximate at the time of printing.
4. Actual area may vary from stated area and unit direction may vary from unit to unit. Drawings not to scale. The developer reserves the right to make revisions to the floor plans and any features, materials, dimensions, drawings and amenities mentioned in this brochure without notice.

4  
BEDROOM

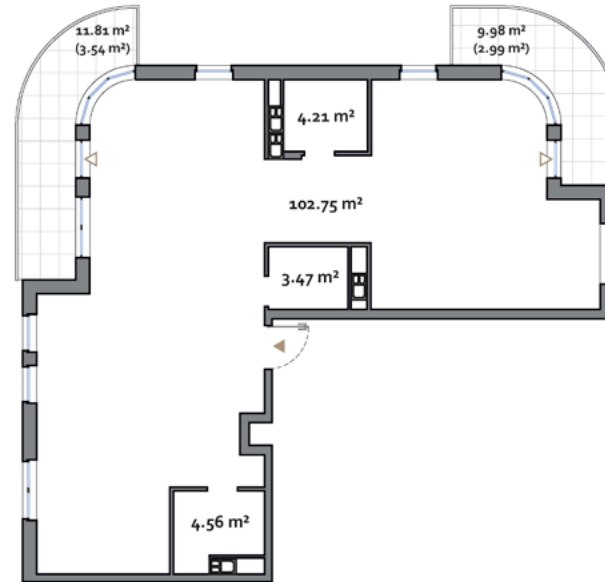
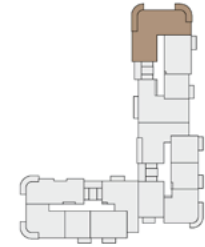
NVW NORTH  
WATERFRONT

Eola 2

4 BEDROOM  
TYPE A

APARTMENT AREA.....114.99 m<sup>2</sup>  
BALCONY AREA.....21.79 (6.53 m<sup>2</sup>)  
NET AREA.....121.52 m<sup>2</sup>

KEY PLAN 2-10 FLOORS



Disclaimer

1. All room dimensions are in metric and measured to structural elements and exclude wall finishes and construction tolerances.
2. All dimensions have been provided by our consultant architects.
3. All materials, dimensions, features and amenities are approximate at the time of printing.
4. Actual area may vary from stated area and unit direction may vary from unit to unit. Drawings not to scale. The developer reserves the right to make revisions to the floor plans and any features, materials, dimensions, drawings and amenities mentioned in this brochure without notice.



# Eola 2

NORTHWATERFRONT.BY



International number: +375 17 311-6888

Toll-free number: 8-801-100-3888

North Waterfront Sales Center,

Sverdlova str. 11, Minsk

Tsvirko str. 78, Minsk

**NV** NORTH  
WATERFRONT