

Somerset east



Key Features

Implementing the concept of a dynamic 21st century center of sophisticated living by the Tsna Lake, North Waterfront will be a community buzzing with life.

Encircled by a kindergarten, a supermarket, car-parks, healthcare centers, cafes and pocket parks, the neighborhood caters to all your requirements, fostering a lively ambiance brimming with vitality and hospitality wherever you wander.

A contemporary rendition of the timeless architectural style aptly captures the essence of North Waterfront, blending technology of the future inspired by the rich history of the past. The advantageous location of Somerset East, with its convenient access to the Minsk Ring Road and swift reach to the city center, will enable residents to conserve their most precious resource: time.

9

Floors

3

Lobbies

120

Apartments

Perfectly connected

35

mins
Airport

25

mins
City Center

15

mins
National Library

10

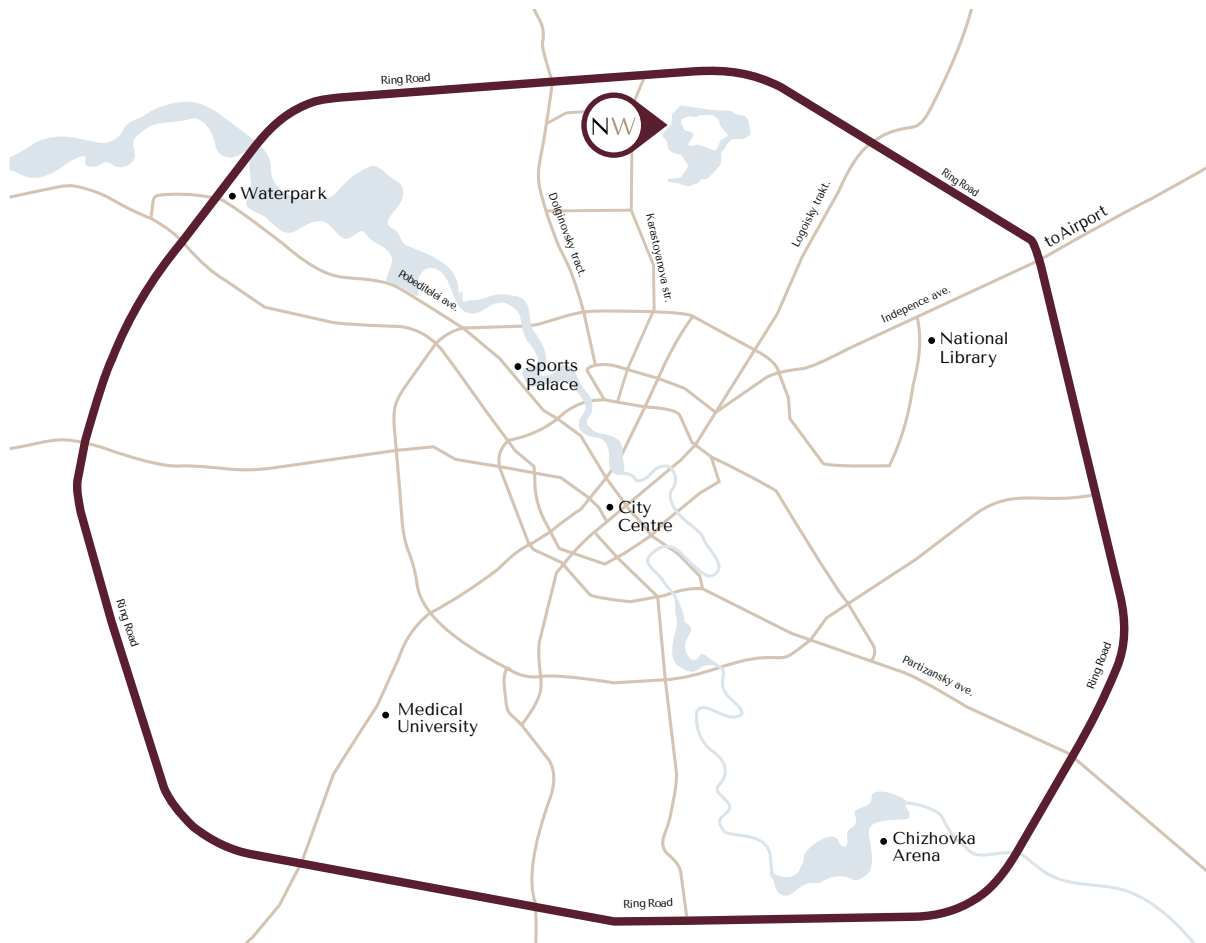
mins
Sports Palace

1

mins
Ring Road

30

mins
Railway Station



Location



Building and its surroundings

- pocket park nearby
- Residential Club nearby
- Forest park nearby
- Kindergarten nearby
- 20-min walk to the Neighborhood square
- 5-min drive to the Lakeside Park
- extensive private courtyard-park
- facade - decorative plaster finish and porcelain stoneware
- energy saving aluminum profiles for the windows and balcony doors
- balconies with metal balustrades
- accessible for people of determination
- underground waste disposal system



Building amenities

Parking

- outdoor parking available near the building
- multi-level car park within walking distance
- charging stations for electric vehicles nearby

Courtyard

- private outdoor courtyard
- 2775 m² of landscaped area
- children's play area

- bike box
- lounge zones
- pocket park

Common areas

- styled residential hallways
- dedicated storage for strollers and pet paw-washing facilities
- relaxation area in lobbies



Apartments

Somerset East offers a considered collection of apartments - cozy elegant places and spacious functional solutions for growing families.

Flexible layouts let you shape your home around your life rhythm. Each apartment invites daylight through floor-to-ceiling windows and opens to views of the surrounding greenery.

- ceiling height of 2.7 meters
- elegant balconies
- designed floor plans with maximum usable space



Installment payment plan

We offer our customers a selection of the finest financial plans & conditions, allowing them to opt for the most convenient payment method. The cost of the flat remains consistent whether purchased through instalments or credit.

Unmatched installments from the developer

A down payment of 50% is required, with the remaining amount payable in monthly installments of 10%.

Exclusive credit terms from MTBank

A loan term of up to 30 years is available, covering up to 90% of the apartment's value. During the initial 12 months, the interest rate is 2.99%, thereafter adjusting to 17.55% (floating rate linked to the overnight rate of the NBRB). Early repayment is permitted without any penalties or commissions.

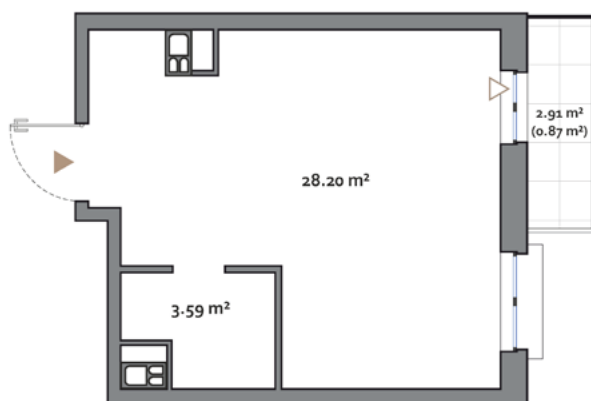


Somerset east

STUDIO TYPE A

APARTMENT AREA.....31.34 m² - 31.79 m²
BALCONY AREA.....2.91 (0.87 m²)
NET AREA.....31.34 m² - 32.66 m²

KEY PLAN 2-9 FLOORS



Disclaimer

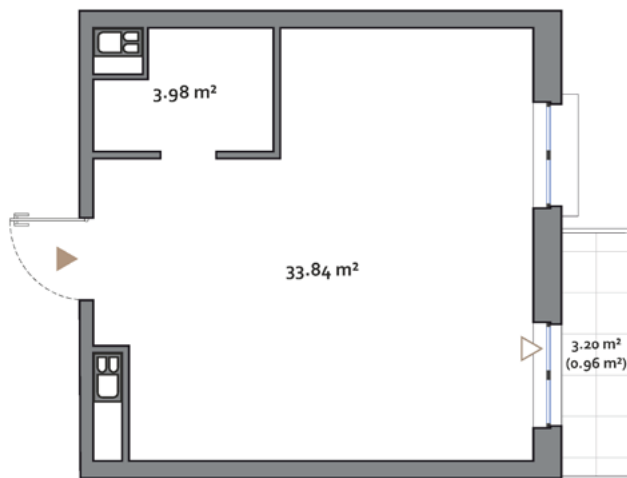
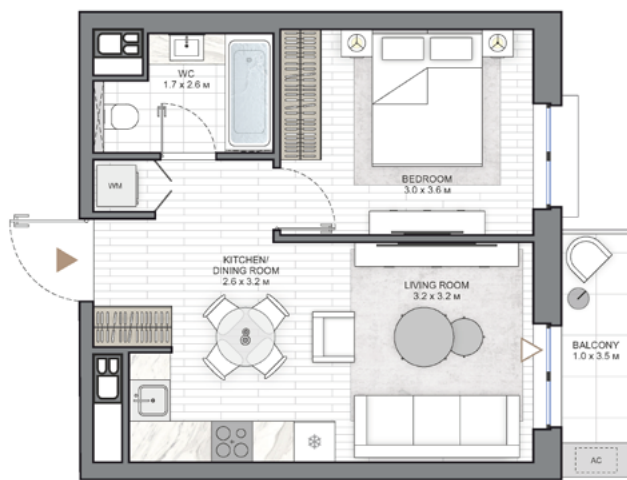
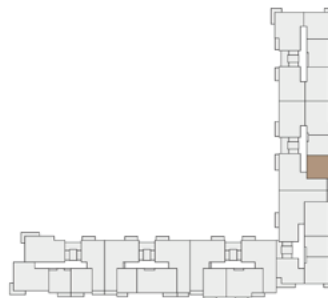
1. All room dimensions are in metric and measured to structural elements and exclude wall finishes and construction tolerances.
2. All dimensions have been provided by our consultant architects.
3. All materials, dimensions, features and amenities are approximate at the time of printing.
4. Actual area may vary from stated area and unit direction may vary from unit to unit. Drawings not to scale. The developer reserves the right to make revisions to the floor plans and any features, materials, dimensions, drawings and amenities mentioned in this brochure without notice.

Somerset east

1 BEDROOM TYPE A

APARTMENT AREA 37.82 m² - 38.20 m²
BALCONY AREA 3.20 (0.96 m²)
NET AREA 38.20 m² - 38.78 m²

KEY PLAN 2-9 FLOORS



Disclaimer

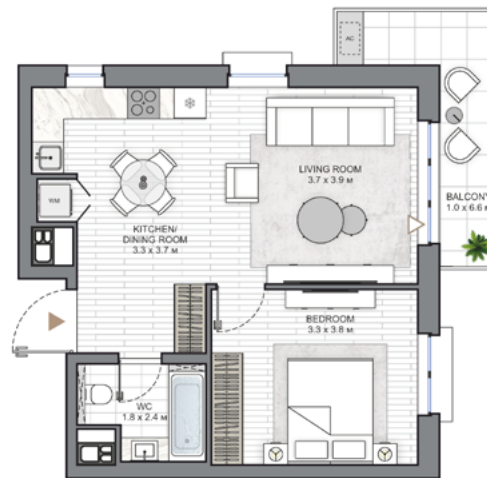
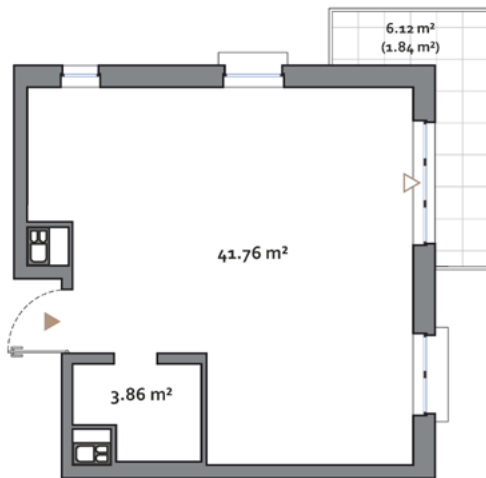
1. All room dimensions are in metric and measured to structural elements and exclude wall finishes and construction tolerances.
2. All dimensions have been provided by our consultant architects.
3. All materials, dimensions, features and amenities are approximate at the time of printing.
4. Actual area may vary from stated area and unit direction may vary from unit to unit. Drawings not to scale. The developer reserves the right to make revisions to the floor plans and any features, materials, dimensions, drawings and amenities mentioned in this brochure without notice.

Somerset east

1 BEDROOM TYPE F

APARTMENT AREA.....45.42 m² - 45.62 m²
BALCONY AREA.....6.12 (1.84 m²) - 7.13 (2.14 m²)
NET AREA.....47.46 m² - 47.56 m²

KEY PLAN 2-9 FLOORS



Disclaimer

1. All room dimensions are in metric and measured to structural elements and exclude wall finishes and construction tolerances.
2. All dimensions have been provided by our consultant architects.
3. All materials, dimensions, features and amenities are approximate at the time of printing.
4. Actual area may vary from stated area and unit direction may vary from unit to unit. Drawings not to scale. The developer reserves the right to make revisions to the floor plans and any features, materials, dimensions, drawings and amenities mentioned in this brochure without notice.

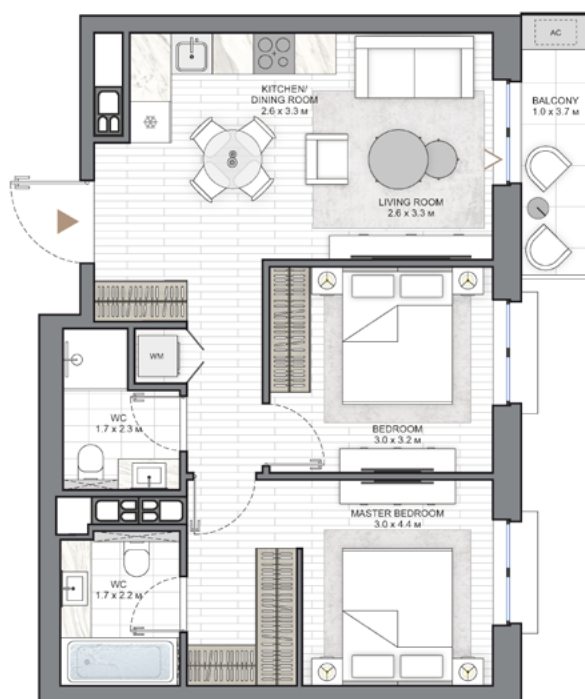
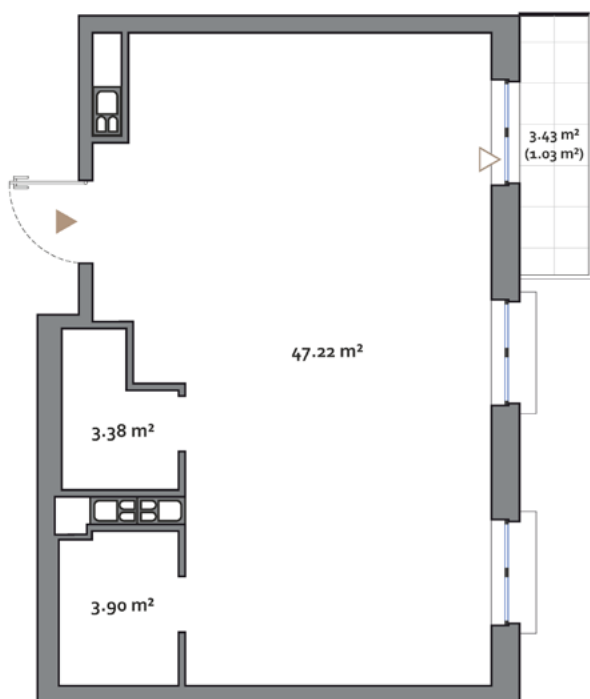


Somerset east

2 BEDROOM TYPE A

APARTMENT AREA..... 54.50 m² - 55.45 m²
BALCONY AREA..... 3.43 (1.03 m²) - 7.86 (2.36 m²)
NET AREA..... 55.53 m² - 57.81 m²

KEY PLAN 2-9 FLOORS



Disclaimer

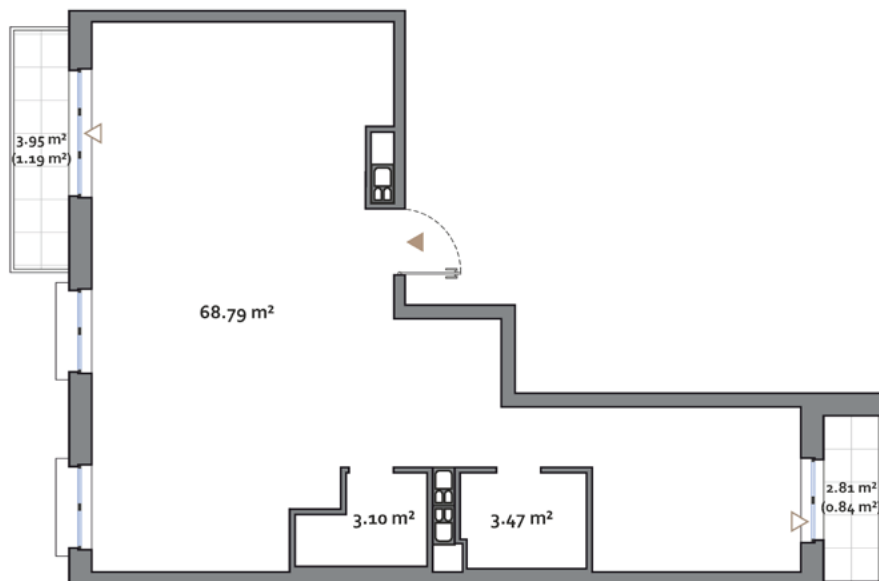
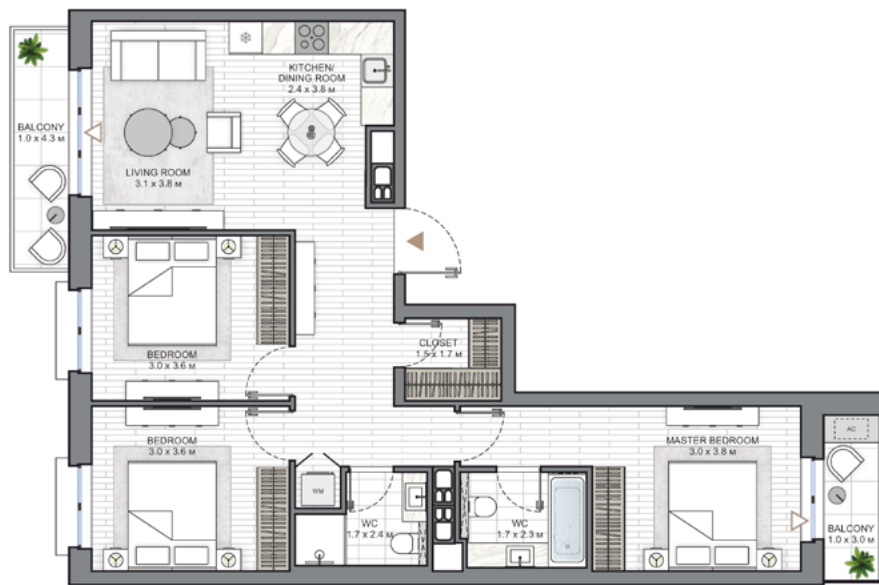
1. All room dimensions are in metric and measured to structural elements and exclude wall finishes and construction tolerances.
2. All dimensions have been provided by our consultant architects.
3. All materials, dimensions, features and amenities are approximate at the time of printing.
4. Actual area may vary from stated area and unit direction may vary from unit to unit. Drawings not to scale. The developer reserves the right to make revisions to the floor plans and any features, materials, dimensions, drawings and amenities mentioned in this brochure without notice.

Somerset east

3 BEDROOM TYPE A

APARTMENT AREA.....75.36 m² - 76.39 m²
BALCONY AREA.....2.81 (0.84 m²) - 6.76 (2.03 m²)
NET AREA.....77.23 m² - 77.39 m²

KEY PLAN 2-9 FLOORS



Disclaimer

1. All room dimensions are in metric and measured to structural elements and exclude wall finishes and construction tolerances.
2. All dimensions have been provided by our consultant architects.
3. All materials, dimensions, features and amenities are approximate at the time of printing.
4. Actual area may vary from stated area and unit direction may vary from unit to unit. The developer reserves the right to make revisions to the floor plans and any features, materials, dimensions, drawings and amenities mentioned in this brochure without notice.

Somerset east

3 BEDROOM TYPE D

APARTMENT AREA 99.45 m²
BALCONY AREA 2.81 (0.84 m²) - 6.48 (1.94 m²)
NET AREA 100.29 m² - 101.39 m²

KEY PLAN 2-9 FLOORS



Disclaimer

1. All room dimensions are in metric and measured to structural elements and exclude wall finishes and construction tolerances.
2. All dimensions have been provided by our consultant architects.
3. All materials, dimensions, features and amenities are approximate at the time of printing.
4. Actual area may vary from stated area and unit direction may vary from unit to unit. Drawings not to scale. The developer reserves the right to make revisions to the floor plans and any features, materials, dimensions, drawings and amenities mentioned in this brochure without notice.