

Somerset east





North Waterfront

An exciting new destination for Belarus

The North Waterfront development is a bold new vision for a waterfront community in the heart of the capital that looks to the future whilst drawing inspiration from the neighborhood's rich history.

We have diverted the status quo towards prioritizing residents' well-being and experiences, focusing on the importance of quality amenities and resident's lifestyles by bringing the most incredible designers and architects to deliver world-class communities.

35

mins
From the
Airport

1

mins
From the
Ring Road

30

mins
From the
Railway Station

25

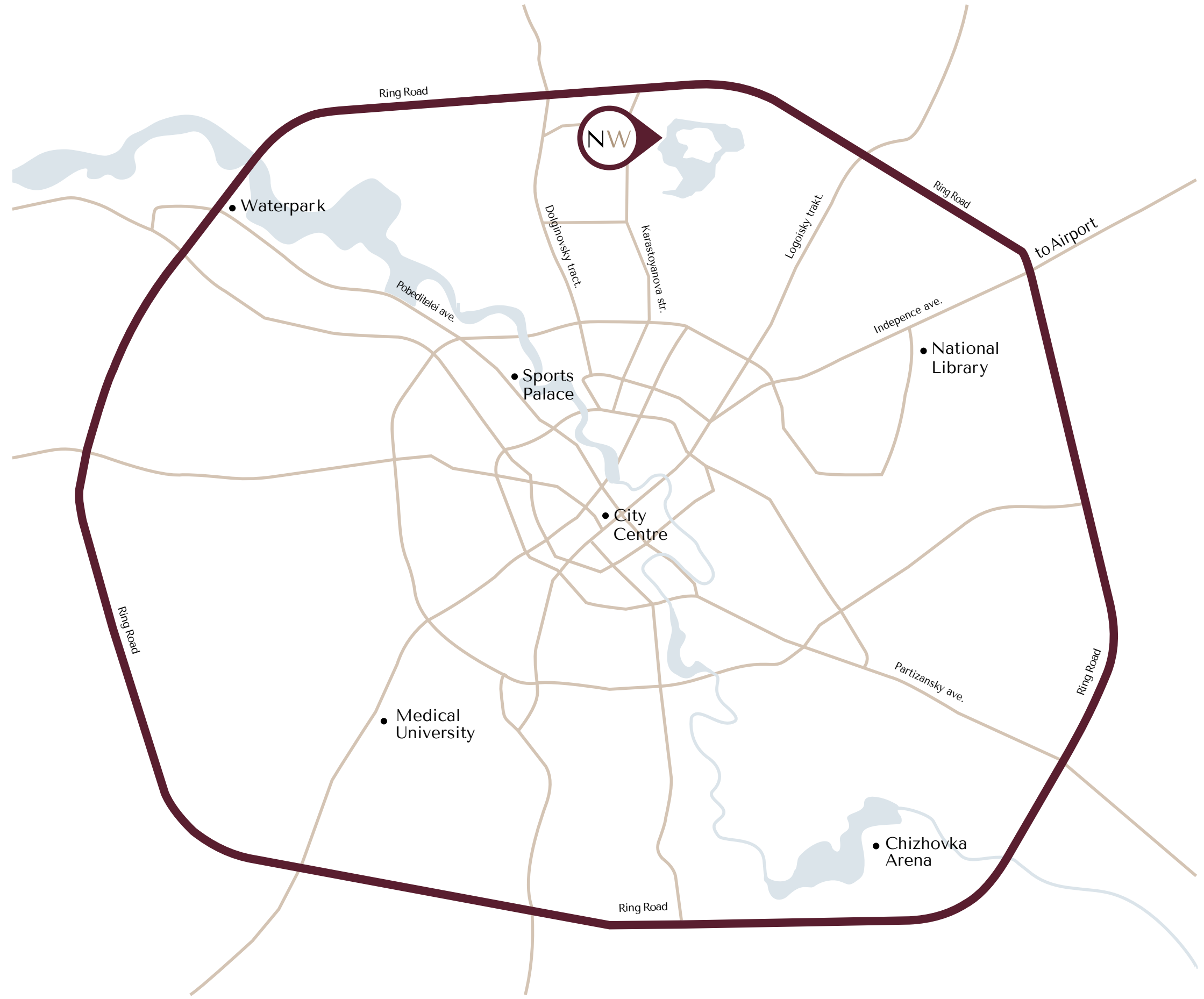
mins
From the
City Center

15

mins
From the
National Library

10


mins
From the
Sports Palace





- 

Exhibition Center
- 

Parks
- 


Ice Rink
- 

Schools
- 

Kid's Play Areas
- 

Dog Parks
- 

Cycling Track
- 

Kindergartens
- 

IT University
- 

Supermarkets
- 

Fishing Pier
- 

Medical Centers

Lakeside Park

Residents of North Waterfront will be able to enjoy the modern and healthy environment created by the Lakeside Park.

The park offers a wonderful atmosphere perfect for relaxing and socializing amidst a captivating blend of natural beauty and immersive attractions.



Green Parks



Art SCULPTURES



Amphitheater



Sports Areas



Fishing Pier



Urban Beach



Cycling Track



Jogging Trail



Barbecue Areas



Picnic Areas



Kid's Play Area



Cafes





Neighbourhood Square

Redefining lifestyle with an open park catering to the neighborhood, with its bespoke details, curated retail boutiques and avant-garde dining experiences.

This pedestrian friendly space located in the neighboring district will also become a space for entertainment and special events.



Retail



Restaurants & Cafes



Outdoor Events



Christmas Tree



Art Sculptures



Green Lawn



Kid's Play Area



Picnic Areas



Residential Club

North Waterfront provides a unique experience that combines the benefits of neighborhood living with exclusive amenities and services.

The Residential Club, conveniently situated within a walking distance, offers elegantly styled spaces exclusive to residents, enriching contemporary living with comfort and effortless access to premium amenities.



Cinema



Play Area



Gym



Table Tennis



Music Room



Co-working Areas



Event Room



Children's Place



Cafe



Sauna



Somerset east



Somerset east

Somerset East offers majestic, expressive architecture where quality, style, and comfort intertwine into a unified vision of premium living.

With its refined design and nature just beyond your doorstep, the building creates a seamless dialogue between elegance and tranquility.

A vibrant lifestyle here brings together nature, recreation, and everyday convenience - making it the perfect place to live, grow, and thrive.





Cinderella

Compoet

SMILE

Pure White

A SPACE FILLED WITH CARE



Interiors

Step into Somerset East – where serene living meets refined design.

Interiors are crafted to embody relaxed elegance, featuring natural textures, abundant light, and exquisite finishes that echo the tranquility of the surrounding landscape.

- Designer lobbies with panoramic glass
- Elegantly designed hallways
- Dedicated stroller storage
- Pet-friendly paw-washing station





A PLACE FOR INSPIRATION

At Somerset East, every home is designed to grow with you.

From sun-drenched studios to expansive three-bedroom residences, each apartment is thoughtfully planned to make the most of natural light and space – creating a warm, welcoming atmosphere for every stage of life.

NV NORTH WATERFRONT

Somerset east

STUDIO
TYPE A

APARTMENT AREA.....31.34 m² - 31.79 m²
BALCONY AREA.....2.91 (0.87 m²)
NET AREA.....31.34 m² - 32.66 m²

KEY PLAN 2-9 FLOORS



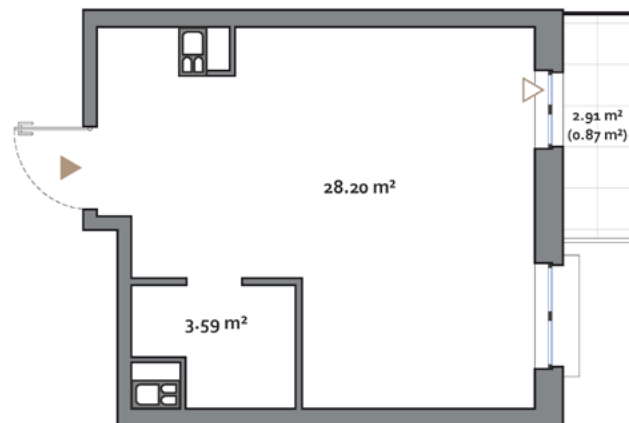
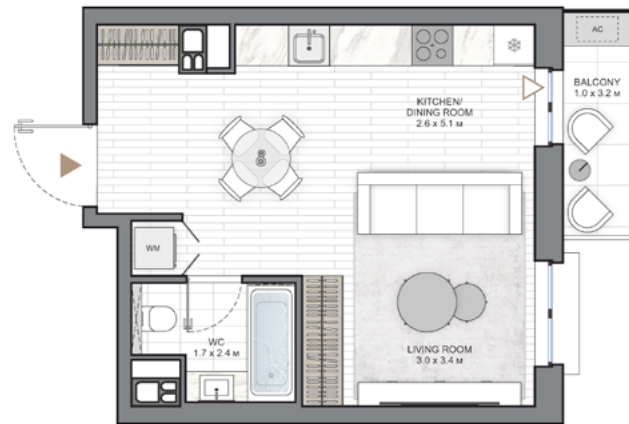
NV NORTH WATERFRONT

Somerset east

1 BEDROOM
TYPE A

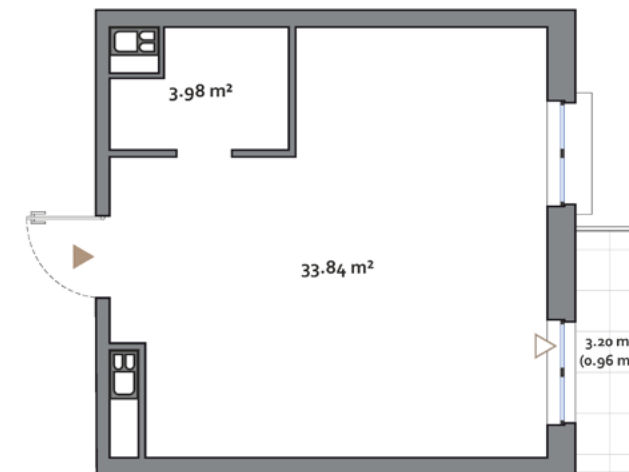
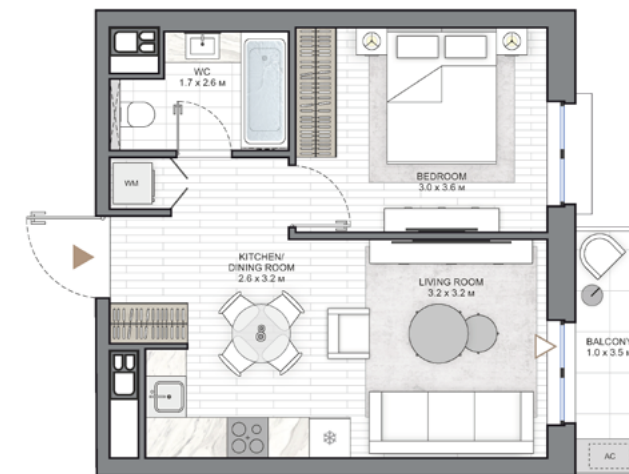
APARTMENT AREA.....37.82 m² - 38.20 m²
BALCONY AREA.....3.20 (0.96 m²)
NET AREA.....38.20 m² - 38.78 m²

KEY PLAN 2-9 FLOORS



Disclaimer

1. All room dimensions are in metric and measured to structural elements and exclude wall finishes and construction tolerances.
2. All dimensions have been provided by our consultant architects.
3. All materials, dimensions, features and amenities are approximate at the time of printing.
4. Actual area may vary from stated area and unit direction may vary from unit to unit. Drawings not to scale. The developer reserves the right to make revisions to the floor plans and any features, materials, dimensions, drawings and amenities mentioned in this brochure without notice.



Disclaimer

1. All room dimensions are in metric and measured to structural elements and exclude wall finishes and construction tolerances.
2. All dimensions have been provided by our consultant architects.
3. All materials, dimensions, features and amenities are approximate at the time of printing.
4. Actual area may vary from stated area and unit direction may vary from unit to unit. Drawings not to scale. The developer reserves the right to make revisions to the floor plans and any features, materials, dimensions, drawings and amenities mentioned in this brochure without notice.

NVW NORTH WATERFRONT

Somerset east

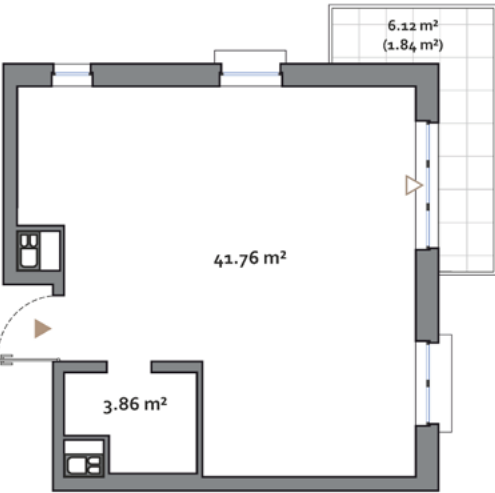
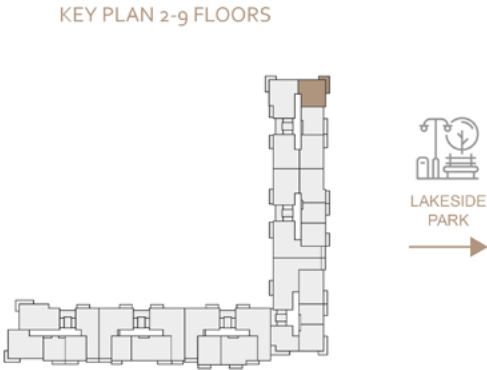
1 BEDROOM

TYPE F

APARTMENT AREA.....45.42 m² - 45.62 m²

BALCONY AREA.....6.12 (1.84 m²) - 7.13 (2.14 m²)

NET AREA.....47.46 m² - 47.56 m²



Disclaimer

1. All room dimensions are in metric and measured to structural elements and exclude wall finishes and construction tolerances.
 2. All dimensions have been provided by our consultant architects.
 3. All materials, dimensions, features and amenities are approximate at the time of printing.
 4. Actual area may vary from stated area and unit direction may vary from unit to unit. Drawings not to scale. The developer reserves the right to make revisions to the floor plans and any features, materials, dimensions, drawings and amenities mentioned in this brochure without notice.

2 BR

NVW NORTH WATERFRONT

Somerset east

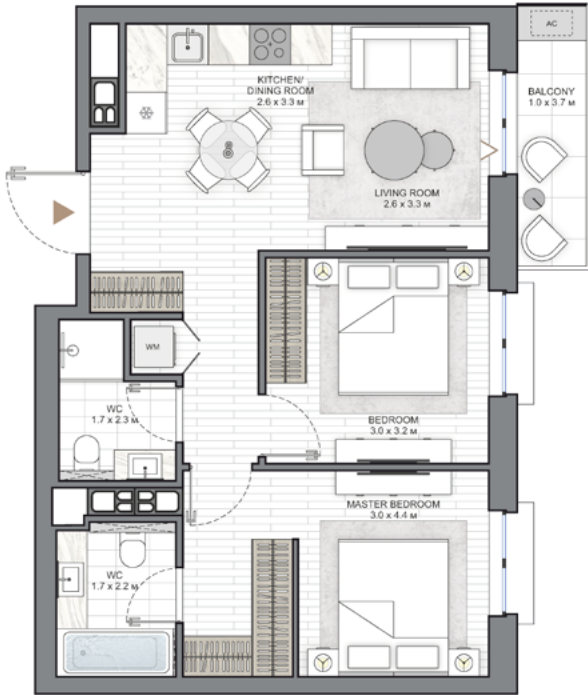
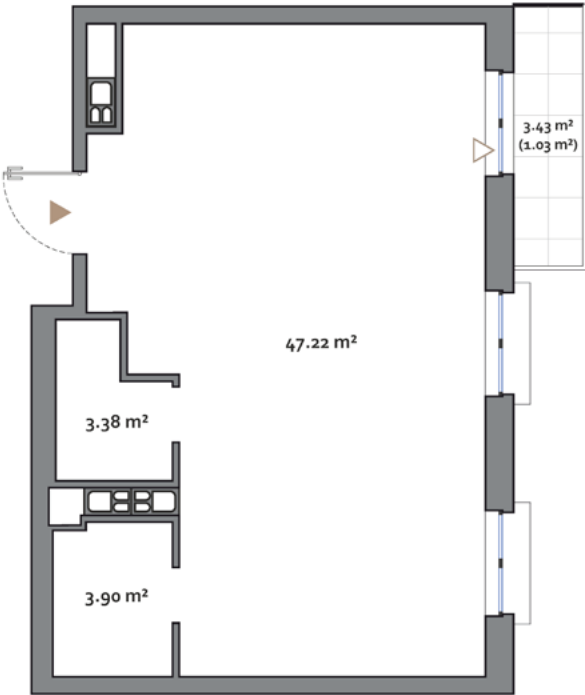
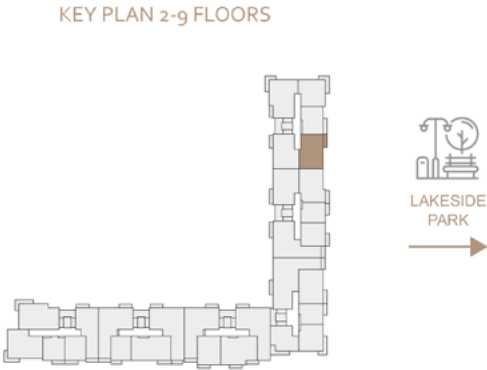
2 BEDROOM

TYPE A

APARTMENT AREA.....54.50 m² - 55.45 m²

BALCONY AREA.....3.43 (1.03 m²) - 7.86 (2.36 m²)

NET AREA.....55.53 m² - 57.81 m²



Disclaimer

1. All room dimensions are in metric and measured to structural elements and exclude wall finishes and construction tolerances.
 2. All dimensions have been provided by our consultant architects.
 3. All materials, dimensions, features and amenities are approximate at the time of printing.
 4. Actual area may vary from stated area and unit direction may vary from unit to unit. Drawings not to scale. The developer reserves the right to make revisions to the floor plans and any features, materials, dimensions, drawings and amenities mentioned in this brochure without notice.

3 BR

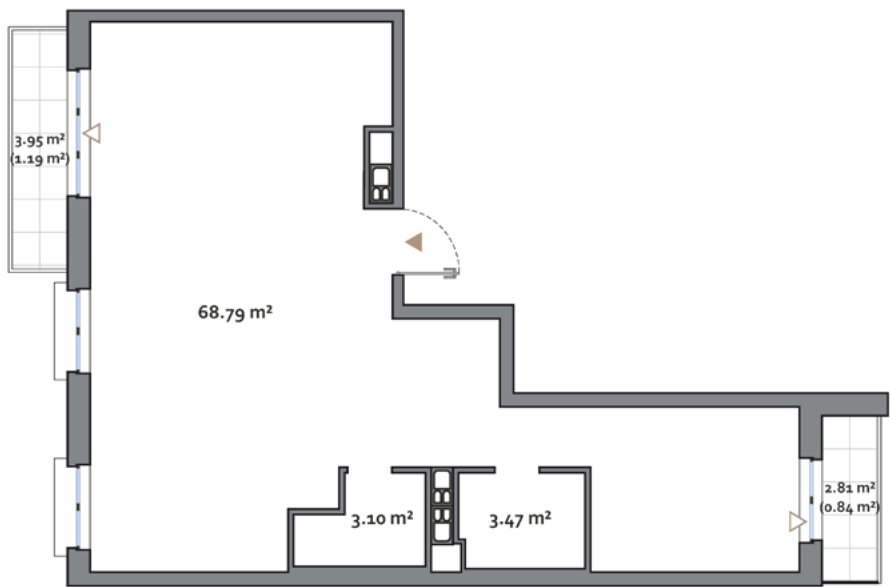
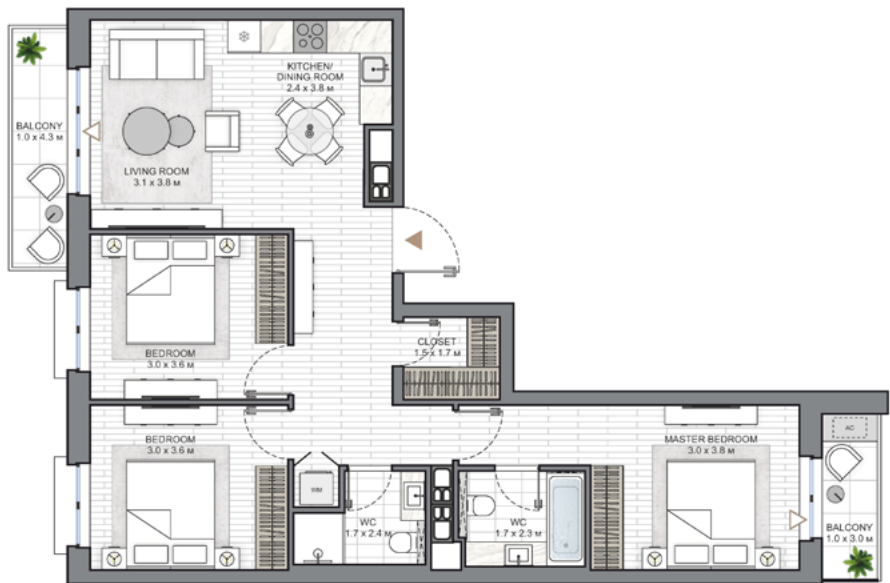
NVW NORTH WATERFRONT

Somerset east

3 BEDROOM TYPE A

APARTMENT AREA.....75.36 m² - 76.39 m²
BALCONY AREA.....2.81 (0.84 m²) - 6.76 (2.03 m²)
NET AREA.....77.23 m² - 77.39 m²

KEY PLAN 2-9 FLOORS



Disclaimer

1. All room dimensions are in metric and measured to structural elements and exclude wall finishes and construction tolerances.
2. All dimensions have been provided by our consultant architects.
3. All materials, dimensions, features and amenities are approximate at the time of printing.
4. Actual area may vary from stated area and unit direction may vary from unit to unit. Drawings not to scale. The developer reserves the right to make revisions to the floor plans and any features, materials, dimensions, drawings and amenities mentioned in this brochure without notice.

3 BR

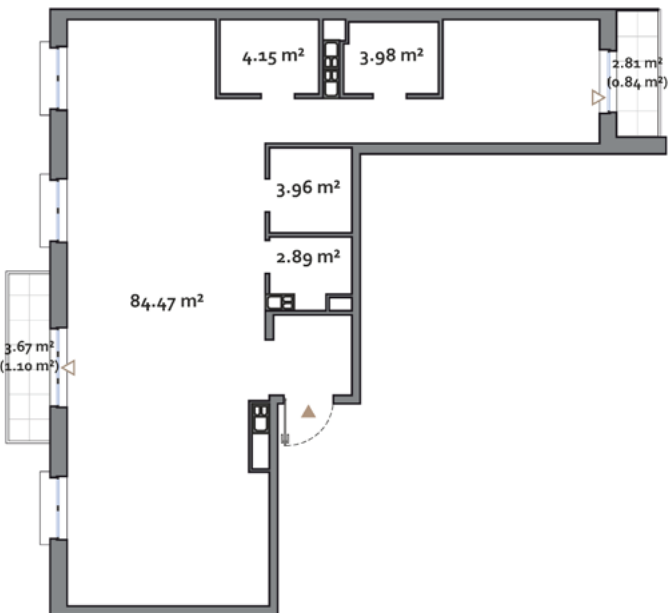
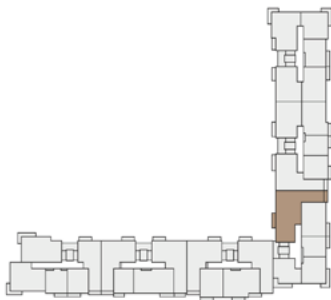
NVW NORTH WATERFRONT

Somerset east

3 BEDROOM TYPE D

APARTMENT AREA.....99.45 m²
BALCONY AREA.....2.81 (0.84 m²) - 6.48 (1.94 m²)
NET AREA.....100.29 m² - 101.39 m²

KEY PLAN 2-9 FLOORS



Disclaimer

1. All room dimensions are in metric and measured to structural elements and exclude wall finishes and construction tolerances.
2. All dimensions have been provided by our consultant architects.
3. All materials, dimensions, features and amenities are approximate at the time of printing.
4. Actual area may vary from stated area and unit direction may vary from unit to unit. Drawings not to scale. The developer reserves the right to make revisions to the floor plans and any features, materials, dimensions, drawings and amenities mentioned in this brochure without notice.

Somerset east

NORTHWATERFRONT.BY



International number: +375 17 311-6888

Toll-free number: 8-801-100-3888

North Waterfront Sales Center,

Sverdlova str. 11, Minsk

Tsvirko str. 78, Minsk

NW NORTH
WATERFRONT