

Alura 1





North Waterfront

An exciting new destination for Belarus

The North Waterfront development is a bold new vision for a waterfront community in the heart of the capital that looks to the future whilst drawing inspiration from the neighborhood's rich history.

We have diverted the status quo towards prioritizing residents' well-being and experiences, focusing on the importance of quality amenities and resident's lifestyles by bringing the most incredible designers and architects to deliver world-class communities.

35
mins
From the
Airport

1
mins
From the
Ring Road

30
mins
From the
Railway Station

25
mins
From the
City Center

15
mins
From the
National Library

10
mins
From the
Sports Palace





Exhibition Center



Parks



Ice Rink



Schools



Kid's Play Areas



Dog Parks



Cycling Track



Kindergartens



IT University



Supermarkets



Fishing Pier















Medical Centers

Lakeside Park

Residents of North Waterfront will be able to enjoy the modern and healthy environment created by the Lakeside Park.

The park offers a wonderful atmosphere perfect for relaxing and socializing amidst a captivating blend of natural beauty and immersive attractions.

-  Green Parks
-  Art Sculptures
-  Sports Areas
-  Urban Beach
-  Cycling Track
-  Jogging Trail
-  Picnic Areas
-  Cafes
-  Barbecue Areas
-  Amphitheater
-  Kid's Play Area
-  Fishing Pier








Neighbourhood Square

Redefining lifestyle with an open park catering to the neighborhood, with its bespoke details, curated retail boutiques and avant-garde dining experiences.

This pedestrian friendly space located in the neighboring district will also become a space for entertainment and special events.







-  Retail
-  Restaurants & Cafes
-  Outdoor Events
-  Picnic Areas
-  Art Sculptures
-  Green Lawn
-  Kid's Play Area
-  Christmas Tree



Residential Club

North Waterfront provides a unique experience that combines the benefits of neighborhood living with exclusive amenities and services.

The Residential Club, conveniently situated within a walking distance, offers elegantly styled spaces exclusive to residents, enriching contemporary living with comfort and effortless access to premium amenities.

- Cinema
- Event Room
- Gym
- Cafe
- Sauna
- Games Area
- Children's Place
- Meeting Rooms



Celebrate life's moments with loved ones in the fully equipped events lounge.



Enjoy a quiet evening in the private cinema of the Residential Club – a space designed for connection and comfort.



School

At the heart of the neighborhood, a new school will open its doors – a place where knowledge, care and comfort converge.

Spacious classrooms, science labs, a library, gyms and two swimming pools form a well-rounded educational environment.

Designed to the highest modern standards, this school will become an integral part of the neighborhood – a foundation for confident futures.



Swimming
pools



Library



Football
Stadium



Basketball
court



Gym



Laboratories



Kid's
Play Area



Volleyball
courts



Alura 1



Alura 1

A tranquil retreat within the evolving heart of North Waterfront – ALURA 1 brings graceful architecture and the calm of nature together in perfect harmony.

Located in the fourth neighborhood and embraced by forested surroundings, this intimate building offers a slower, more grounded rhythm of life. Just a short walk from Lakeside Park and Tsna Lake, it's a setting where everyday moments are framed by beauty.





New neighborhood continues the vision of North Waterfront as a thoughtfully planned residential destination.

With schools, kindergartens, wellness and education centres, green trails, shops and cafés – everything is close at hand.





WHERE EVERYDAY MOMENTS
FEEL SPECIAL



Interiors

Step into interiors where calm meets clarity. Soft light, elegant proportions and natural tones define a quiet aesthetic that supports both relaxation and inspiration.

- Designer lobbies with panoramic glazing & elegant styling
- Elegantly designed hallways
- Dedicated storage for strollers
- Pet paw-washing facilities



Well-planned layouts give room to grow and adapt – while forest views and outdoor balconies bring a sense of openness and escape.

1
BEDROOM

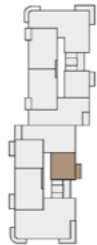
NVW NORTH
WATERFRONT

Alura 1

1 BEDROOM
TYPE A

APARTMENT AREA39.93 m² - 40.38 m²
BALCONY AREA4.81 (1.44 m²)
NET AREA41.38 m² - 41.82 m²

KEY PLAN 2-8 FLOORS



Disclaimer

1. All room dimensions are in metric and measured to structural elements and exclude wall finishes and construction tolerances.
2. All dimensions have been provided by our consultant architects.
3. All materials, dimensions, features and amenities are approximate at the time of printing.
4. Actual area may vary from stated area and unit direction may vary from unit to unit. Drawings not to scale. The developer reserves the right to make revisions to the floor plans and any features, materials, dimensions, drawings and amenities mentioned in this brochure without notice.

2
BEDROOM

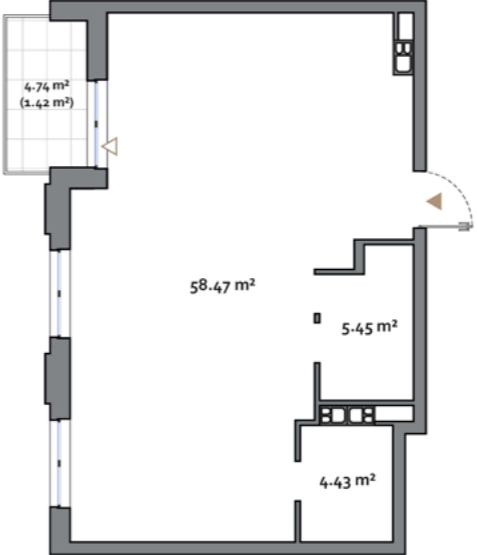
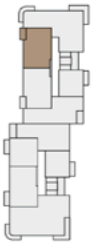
NVW NORTH
WATERFRONT

Alura 1

2 BEDROOM
TYPE A

APARTMENT AREA68.30 m² - 69.01 m²
BALCONY AREA4.74 (1.42 m²)
NET AREA69.72 m² - 70.43 m²

KEY PLAN 2-9 FLOORS



Disclaimer

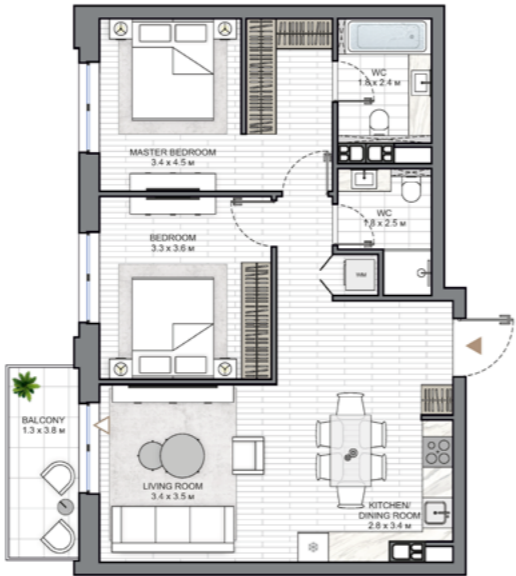
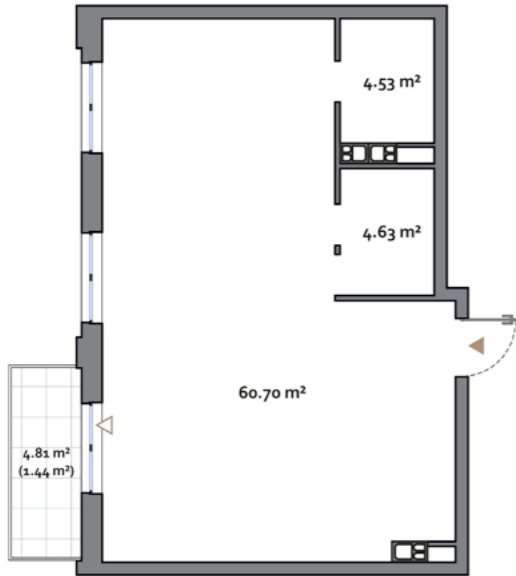
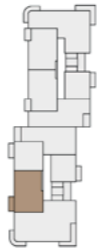
1. All room dimensions are in metric and measured to structural elements and exclude wall finishes and construction tolerances.
2. All dimensions have been provided by our consultant architects.
3. All materials, dimensions, features and amenities are approximate at the time of printing.
4. Actual area may vary from stated area and unit direction may vary from unit to unit. Drawings not to scale. The developer reserves the right to make revisions to the floor plans and any features, materials, dimensions, drawings and amenities mentioned in this brochure without notice.

Alura 1

2 BEDROOM
TYPE B

APARTMENT AREA.....69.86 m² - 70.56 m²
BALCONY AREA.....4.81 (1.44 m²)
NET AREA71.30 m² - 71.30 m²

KEY PLAN 2-8 FLOORS



Disclaimer

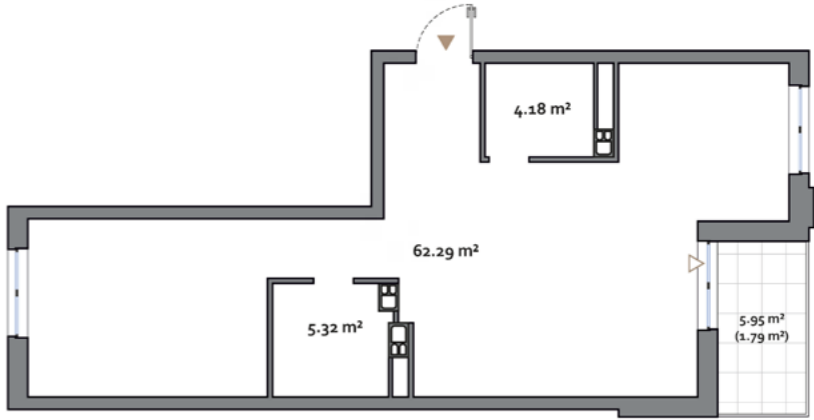
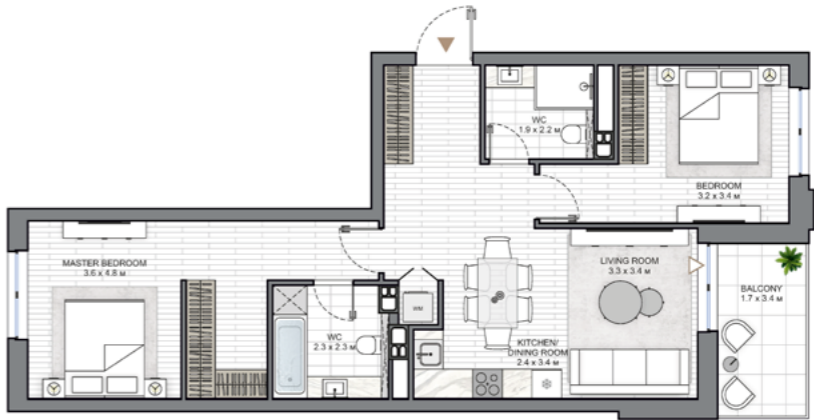
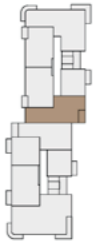
1. All room dimensions are in metric and measured to structural elements and exclude wall finishes and construction tolerances.
2. All dimensions have been provided by our consultant architects.
3. All materials, dimensions, features and amenities are approximate at the time of printing.
4. Actual area may vary from stated area and unit direction may vary from unit to unit. Drawings not to scale. The developer reserves the right to make revisions to the floor plans and any features, materials, dimensions, drawings and amenities mentioned in this brochure without notice.

Alura 1

2 BEDROOM
TYPE C

APARTMENT AREA.....71.79 m² - 72.44 m²
BALCONY AREA.....5.95 (1.79 m²)
NET AREA73.58 m² - 74.22 m²

KEY PLAN 2-9 FLOORS



Disclaimer

1. All room dimensions are in metric and measured to structural elements and exclude wall finishes and construction tolerances.
2. All dimensions have been provided by our consultant architects.
3. All materials, dimensions, features and amenities are approximate at the time of printing.
4. Actual area may vary from stated area and unit direction may vary from unit to unit. Drawings not to scale. The developer reserves the right to make revisions to the floor plans and any features, materials, dimensions, drawings and amenities mentioned in this brochure without notice.

3
BEDROOM

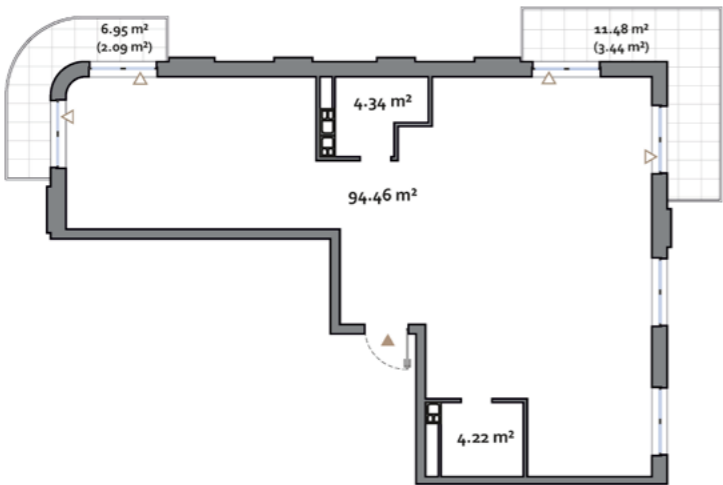
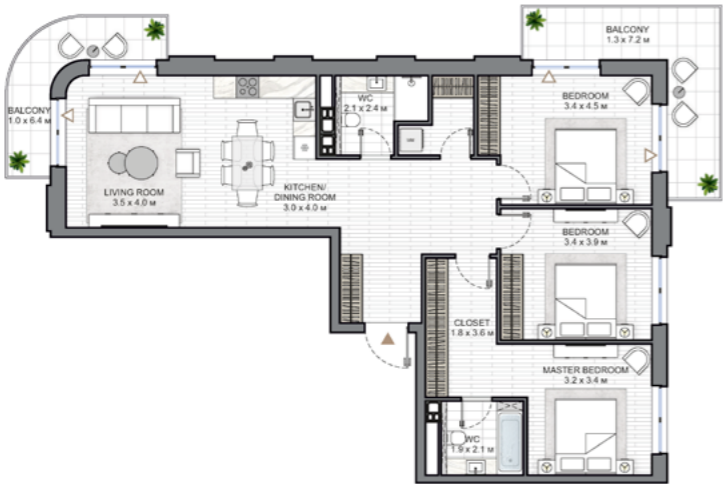
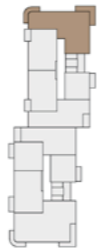
NVW NORTH
WATERFRONT

Alura 1

3 BEDROOM
TYPE A

APARTMENT AREA.....103.02 m² - 104.15 m²
BALCONY AREA.....18.43 (5.53 m²)
NET AREA.....108.55 m² - 109.68 m²

KEY PLAN 2-9 FLOORS



Disclaimer
1. All room dimensions are in metric and measured to structural elements and exclude wall finishes and construction tolerances.
2. All dimensions have been provided by our consultant architects.
3. All materials, dimensions, features and amenities are approximate at the time of printing.
4. Actual area may vary from stated area and unit direction may vary from unit to unit. Drawings not to scale. The developer reserves the right to make revisions to the floor plans and any features, materials, dimensions, drawings and amenities mentioned in this brochure without notice.

4
BEDROOM

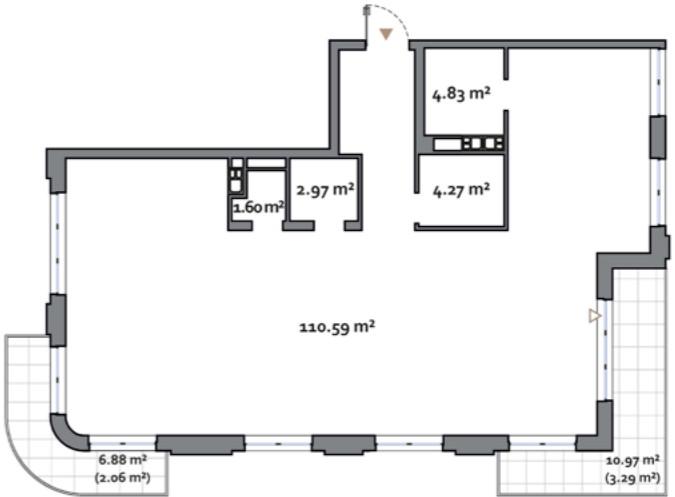
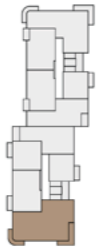
NVW NORTH
WATERFRONT

Alura 1

4 BEDROOM
TYPE A

APARTMENT AREA.....124.26 m² - 125.23 m²
BALCONY AREA.....17.85 (5.35 m²)
NET AREA.....129.61 m² - 130.59 m²

KEY PLAN 2-8 FLOORS



Disclaimer
1. All room dimensions are in metric and measured to structural elements and exclude wall finishes and construction tolerances.
2. All dimensions have been provided by our consultant architects.
3. All materials, dimensions, features and amenities are approximate at the time of printing.
4. Actual area may vary from stated area and unit direction may vary from unit to unit. Drawings not to scale. The developer reserves the right to make revisions to the floor plans and any features, materials, dimensions, drawings and amenities mentioned in this brochure without notice.

Alura 1

NORTHWATERFRONT.BY



International number: +375 17 311-6888

Toll-free number: 8-801-100-3888

North Waterfront Sales Center,

Sverdlova str. 11, Minsk

Tsvirko str. 78, Minsk

NV NORTH
WATERFRONT