

# Ashford 2

NV NORTH  
WATERFRONT







# North Waterfront

An exciting new destination for Belarus

The North Waterfront development is a bold new vision for a waterfront community in the heart of the capital that looks to the future whilst drawing inspiration from the neighborhood's rich history.

We have diverted the status quo towards prioritizing residents' well-being and experiences, focusing on the importance of quality amenities and resident's lifestyles by bringing the most incredible designers and architects to deliver world-class communities.



35

mins  
From the  
Airport

1

mins  
From the  
Ring Road

30

mins  
From the  
Railway Station

25

mins  
From the  
City Center

15

mins  
From the  
National Library


10

mins  
From the  
Sports Palace








- Exhibition Center
- Parks
- Ice Rink
- Schools
- Kid's Play Areas
- Dog Parks
- Cycling Track
- Kindergartens
- IT University
- Supermarkets
- Fishing Pier
- Medical Centers





# Lakeside Park


Residents of North Waterfront will be able to enjoy the modern and healthy environment created by the Lakeside Park.


The park offers a wonderful atmosphere perfect for relaxing and socializing amidst a captivating blend of natural beauty and immersive attractions.


- 

Green Parks
- 


Art SCULPTURES
- 


Amphitheater
- 


Sports Areas
- 


Fishing Pier
- 


Urban Beach
- 

Cycling Track
- 

Jogging Trail
- 

Barbecue Areas
- 

Picnic Areas
- 

Kid's Play Area
- 

Cafes







# Neighbourhood Square

Redefining lifestyle with an open park catering to the neighborhood, with its bespoke details, curated retail boutiques and avant-garde dining experiences.

This pedestrian friendly space located in the neighboring district will also become a space for entertainment and special events.



Retail



Restaurants & Cafes



Outdoor Events



Christmas Tree



Art Sculptures



Green Lawn



Kid's Play Area



Picnic Areas





# Residential Club

North Waterfront provides a unique experience that combines the benefits of neighborhood living with exclusive amenities and services.

The Residential Club, conveniently situated within a walking distance, offers elegantly styled spaces exclusive to residents, enriching contemporary living with comfort and effortless access to premium amenities.



Cinema



Play Area



Gym



Table Tennis



Music Room



Co-working Areas



Event Room



Children's Place



Cafe



Sauna







# Ashford 2





# Ashford 2

ASHFORD 2 is a place where architecture, nature, and everyday comfort come together in perfect balance. Nestled among quiet green streets and private courtyards, this home offers more than just living space – it offers a lifestyle shaped by tranquility and thoughtful design.

Here, every detail invites you to slow down, connect, and enjoy the simple pleasures of daily life.







A PLACE FOR  
YOUR STORY TO UNFOLD









# Interiors

The interiors of ASHFORD 2 combine light, space, and timeless elegance. Open layouts create freedom for your ideas, while floor-to-ceiling windows bring in natural light and offer views of the greenery outside.

Each corner of your home – from the stylish entrance to the cozy living spaces – is designed to offer a sense of calm and well-being.

- Designer lobbies with panoramic glazing & elegant styling
- Elegantly designed hallways
- Dedicated storage for strollers
- Pet paw-washing facilities





CRAFTED FOR MODERN  
LIVING

ASHFORD 2 offers a selection of homes that suit different life stories – from airy studios apartments to spacious four-bedroom residences for families. Each home is carefully planned to make the most of space and light, creating an environment where you can feel truly at ease.



STUDIO

TYPE A

APARTMENT AREA

32.32 - 32,53 m<sup>2</sup>

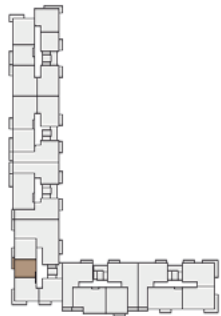
BALCONY AREA

3.64 (1.09 m<sup>2</sup>)

NET AREA

32.53 - 33.41 m<sup>2</sup>

KEY PLAN 2-10 FLOORS



1 BR

1 BEDROOM

TYPE A

APARTMENT AREA

39.16 - 39,30 m<sup>2</sup>

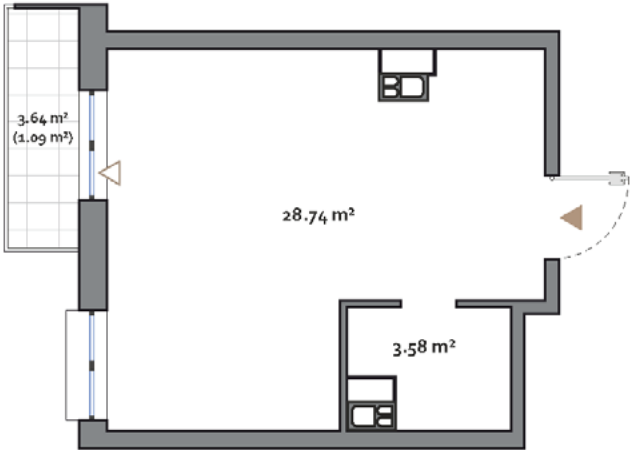
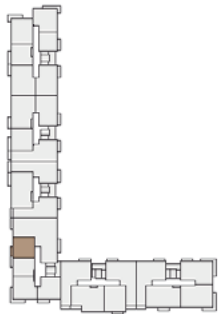
BALCONY AREA

3.38 (1.01 m<sup>2</sup>)

NET AREA

39.16 - 40,31 m<sup>2</sup>

KEY PLAN 1-10 FLOORS



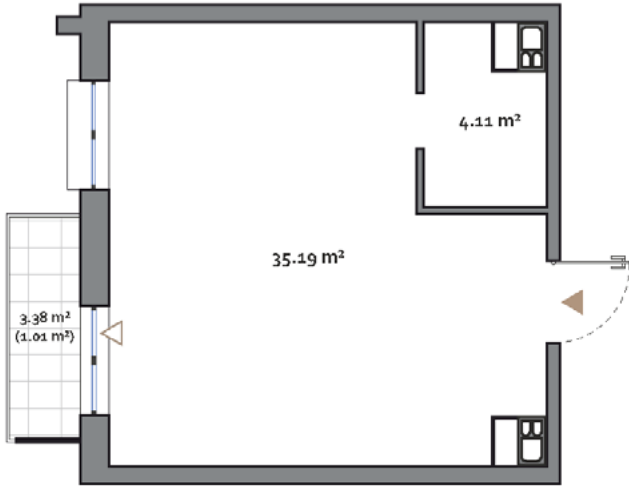
Disclaimer

1. All room dimensions are in metric and measured to structural elements and exclude wall finishes and construction tolerances.

2. All dimensions have been provided by our consultant architects.

3. All materials, dimensions, features and amenities are approximate at the time of printing.

4. Actual area may vary from stated area and unit direction may vary from unit to unit. Drawings not to scale. The developer reserves the right to make revisions to the floor plans and any features, materials, dimensions, drawings and amenities mentioned in this brochure without notice.



Disclaimer

1. All room dimensions are in metric and measured to structural elements and exclude wall finishes and construction tolerances.

2. All dimensions have been provided by our consultant architects.

3. All materials, dimensions, features and amenities are approximate at the time of printing.

4. Actual area may vary from stated area and unit direction may vary from unit to unit. Drawings not to scale. The developer reserves the right to make revisions to the floor plans and any features, materials, dimensions, drawings and amenities mentioned in this brochure without notice.





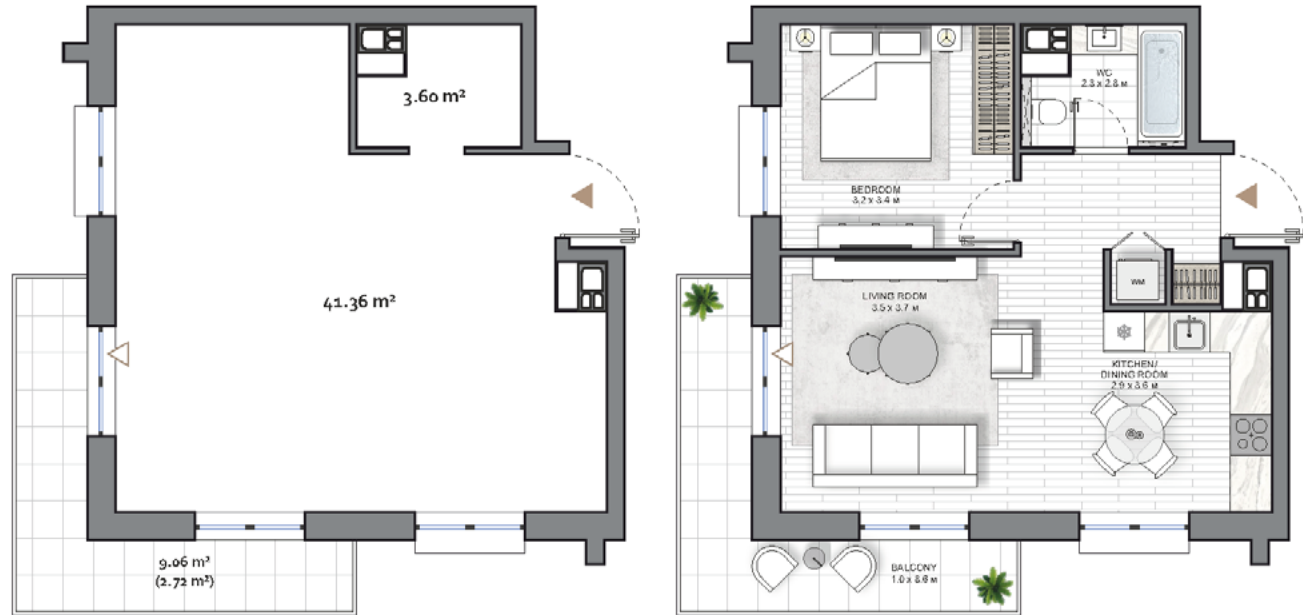
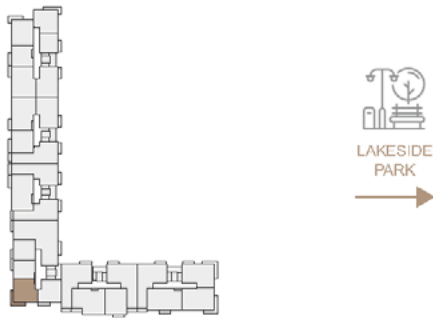
NV NORTH WATERFRONT

Ashford 2

1 BEDROOM  
TYPE E

APARTMENT AREA..... 44.95 - 44,96 m<sup>2</sup>  
BALCONY AREA..... 9.06 (2.72 m<sup>2</sup>)  
NET AREA..... 44,95 - 47, 68 m<sup>2</sup>

KEY PLAN 1-10 FLOORS



Disclaimer

1. All room dimensions are in metric and measured to structural elements and exclude wall finishes and construction tolerances.  
2. All dimensions have been provided by our consultant architects.  
3. All materials, dimensions, features and amenities are approximate at the time of printing.  
4. Actual area may vary from stated area and unit direction may vary from unit to unit. Drawings not to scale. The developer reserves the right to make revisions to the floor plans and any features, materials, dimensions, drawings and amenities mentioned in this brochure without notice.



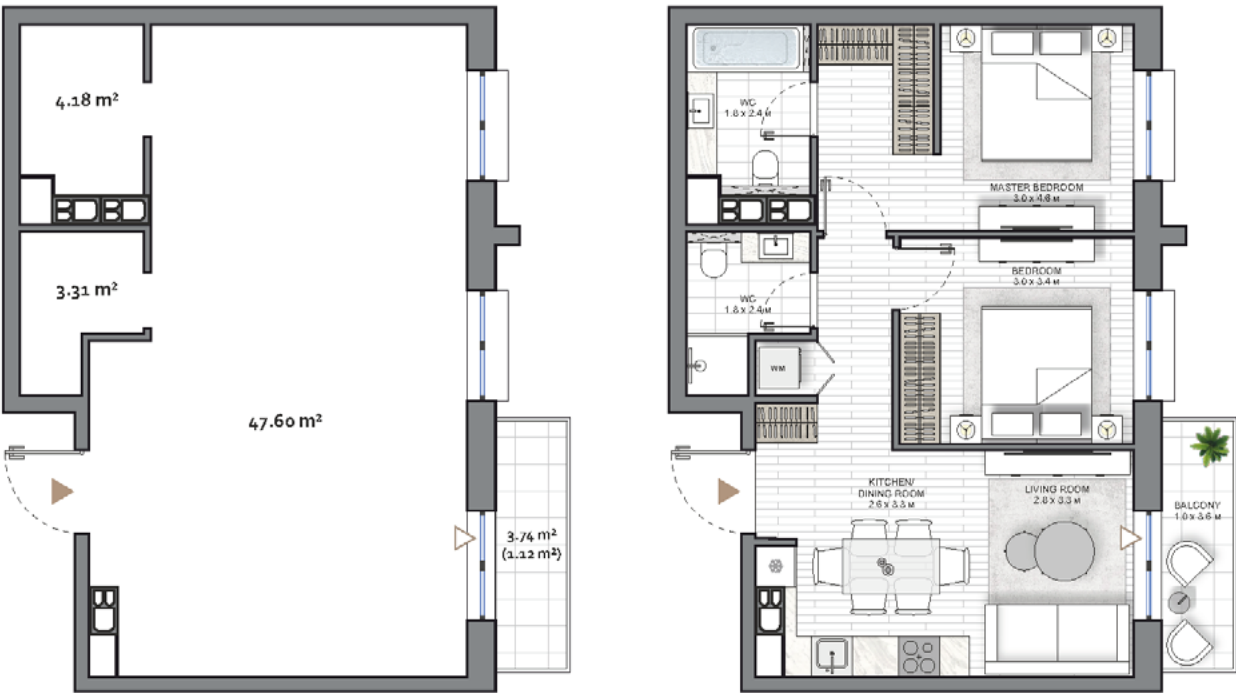
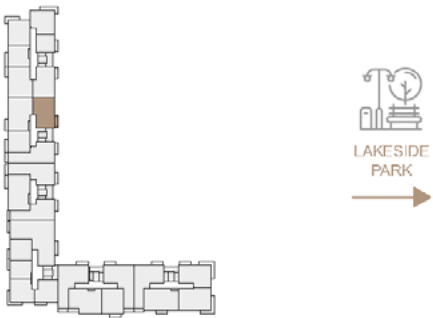
NV NORTH WATERFRONT

Ashford 2

2 BEDROOM  
TYPE A

APARTMENT AREA..... 54.47 - 55,09 m<sup>2</sup>  
BALCONY AREA..... 3.74 (1.12 m<sup>2</sup>)  
NET AREA..... 54.47 - 56,21 m<sup>2</sup>

KEY PLAN 1-8 FLOORS



Disclaimer

1. All room dimensions are in metric and measured to structural elements and exclude wall finishes and construction tolerances.  
2. All dimensions have been provided by our consultant architects.  
3. All materials, dimensions, features and amenities are approximate at the time of printing.  
4. Actual area may vary from stated area and unit direction may vary from unit to unit. Drawings not to scale. The developer reserves the right to make revisions to the floor plans and any features, materials, dimensions, drawings and amenities mentioned in this brochure without notice.



3 BEDROOM  
TYPE A

APARTMENT AREA

77.02 m<sup>2</sup>

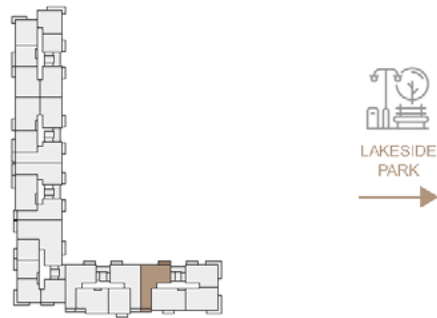
BALCONY AREA

10.88 (3.26 m<sup>2</sup>) - 7.01 (2.10 m<sup>2</sup>)

NET AREA

79.12 - 80,28 m<sup>2</sup>

KEY PLAN 2-10 FLOORS



4 BEDROOM  
TYPE A

APARTMENT AREA

107.16 - 120.50 m<sup>2</sup>

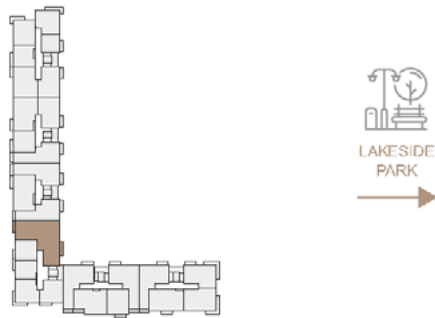
BALCONY AREA

3.73 (1.12 m<sup>2</sup>) - 8.32 (2.49 m<sup>2</sup>)

NET AREA

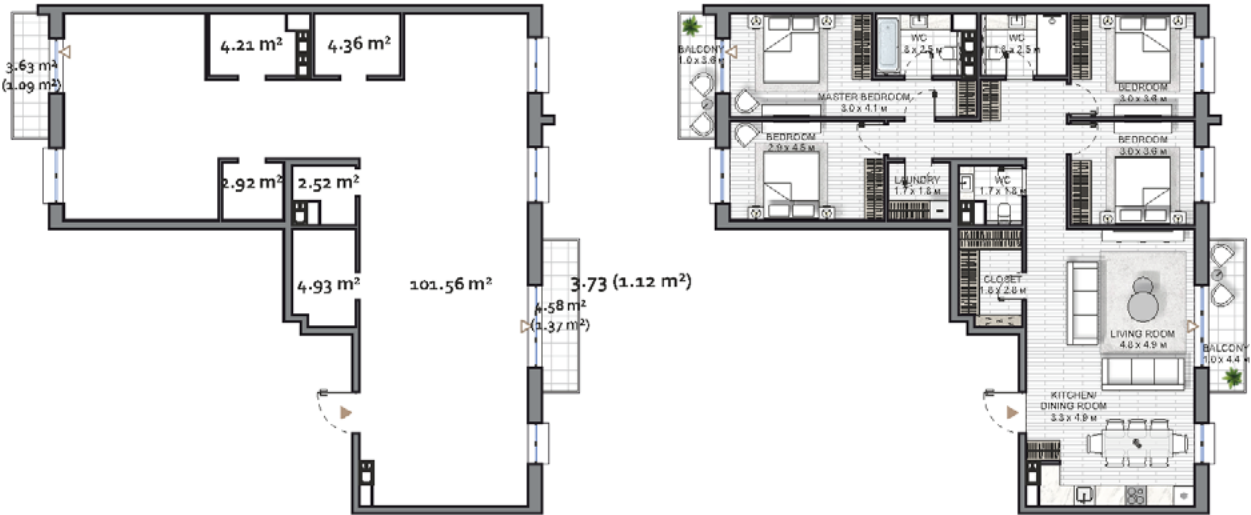
107.16 - 122,99 m<sup>2</sup>

KEY PLAN 1-10 FLOORS



Disclaimer

1. All room dimensions are in metric and measured to structural elements and exclude wall finishes and construction tolerances.
2. All dimensions have been provided by our consultant architects.
3. All materials, dimensions, features and amenities are approximate at the time of printing.
4. Actual area may vary from stated area and unit direction may vary from unit to unit. Drawings not to scale. The developer reserves the right to make revisions to the floor plans and any features, materials, dimensions, drawings and amenities mentioned in this brochure without notice.



Disclaimer

1. All room dimensions are in metric and measured to structural elements and exclude wall finishes and construction tolerances.
2. All dimensions have been provided by our consultant architects.
3. All materials, dimensions, features and amenities are approximate at the time of printing.
4. Actual area may vary from stated area and unit direction may vary from unit to unit. Drawings not to scale. The developer reserves the right to make revisions to the floor plans and any features, materials, dimensions, drawings and amenities mentioned in this brochure without notice.



# Ashford 2

NORTHWATERFRONT.BY



International number: +375 17 311-6888

Toll-free number: 8-801-100-3888

North Waterfront Sales Center,

Sverdlova str. 11, Minsk

Tsvirko str. 78, Minsk

**NW** NORTH  
WATERFRONT

