

Alura 3





North Waterfront

An exciting new destination for Belarus

The North Waterfront development is a bold new vision for a waterfront community in the heart of the capital that looks to the future whilst drawing inspiration from the neighborhood's rich history.

We have diverted the status quo towards prioritizing residents' well-being and experiences, focusing on the importance of quality amenities and resident's lifestyles by bringing the most incredible designers and architects to deliver world-class communities.

35
mins
From the
Airport

1
mins
From the
Ring Road

30
mins
From the
Railway Station



25
mins
From the
City Center

15
mins
From the
National Library

10
mins
From the
Sports Palace

















- 
Exhibition Center
- 
Parks
- 
Ice Rink
- 
Schools
- 
Kid's Play Areas
- 
Dog Parks
- 
Cycling Track
- 
Kindergartens
- 
IT University
- 
Supermarkets
- 
Fishing Pier
- 
Medical Centers

Lakeside Park

Residents of North Waterfront will be able to enjoy the modern and healthy environment created by the Lakeside Park.

The park offers a wonderful atmosphere perfect for relaxing and socializing amidst a captivating blend of natural beauty and immersive attractions.

-  Green Parks
-  Art SCULPTURES
-  Sports Areas
-  Urban Beach
-  Cycling Track
-  Jogging Trail
-  Picnic Areas
-  Cafes
-  Barbecue Areas
-  Amphitheater
-  Kid's Play Area
-  Fishing Pier





Neighbourhood Square

Redefining lifestyle with an open park catering to the neighborhood, with its bespoke details, curated retail boutiques and avant-garde dining experiences.

This pedestrian friendly space located in the neighboring district will also become a space for entertainment and special events.







-  Retail
-  Restaurants & Cafes
-  Outdoor Events
-  Picnic Areas
-  Art Sculptures
-  Green Lawn
-  Kid's Play Area
-  Christmas Tree



Residential Club

North Waterfront provides a unique experience that combines the benefits of neighborhood living with exclusive amenities and services.

The Residential Club, conveniently situated within a walking distance, offers elegantly styled spaces exclusive to residents, enriching contemporary living with comfort and effortless access to premium amenities.

-  Cinema
-  Event Room
-  Gym
-  Cafe
-  Sauna
-  Games Area
-  Children's Place
-  Meeting Rooms



Celebrate life's moments with loved ones in the fully equipped events lounge.



Enjoy a quiet evening in the private cinema of the Residential Club – a space designed for connection and comfort.



School

At the heart of the neighborhood, a new school will open its doors – a place where knowledge, care and comfort converge.

Spacious classrooms, science labs, a library, gyms and two swimming pools form a well-rounded educational environment.

Designed to the highest modern standards, this school will become an integral part of the neighborhood – a foundation for confident futures.



Swimming pools



Library



Football Stadium



Basketball court



Gym



Laboratories



Kid's Play Area



Volleyball courts



Alura 3





Alura 3

A refined vision of contemporary living – ALURA 3 blends timeless design with the rhythm of modern life.

Nestled near Lakeside Park and the edge of the Tsna Lake, with forest landscapes just beyond your doorstep, this is a home where nature becomes part of your daily experience.

ALURA 3 is a place for thoughtful living – where each day unfolds with meaning.



A NEW CHAPTER FOR
YOUR FAMILY

New neighborhood continues the vision of North Waterfront as a thoughtfully planned residential destination.

With schools, kindergartens, wellness and education centres, green trails, shops and cafés – everything is close at hand.





FOLLOW YOUR RHYTHM

Interiors

Elegance lives in every detail – from hotel-style lounges to carefully selected design elements.

- Designer lobbies with panoramic glazing & elegant styling
- Elegantly designed hallways
- Dedicated storage for strollers
- Pet paw-washing facilities





Flexible floorplans at ALURA 3 invite you to realise your own vision of home.

Three-metre ceilings and expansive windows enhance the sense of openness, opening serene views of forest and the new landscaped neighborhood.

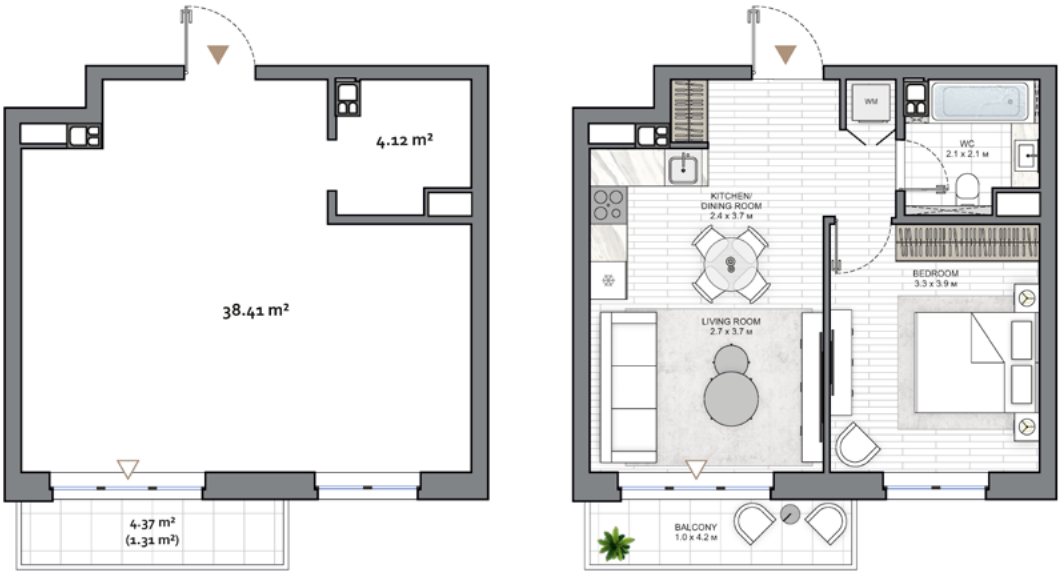
1
BEDROOM

NVW NORTH
WATERFRONT

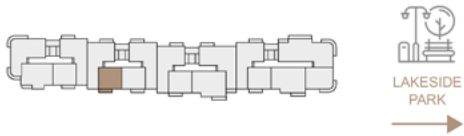
Alura 3

1 BEDROOM
TYPE A

APARTMENT AREA.....42.53 m² - 44.21 m²
BALCONY AREA.....4.37 (1.31 m²)
NET AREA.....42.97 m² - 45.12 m²



KEY PLAN 2-8 FLOORS



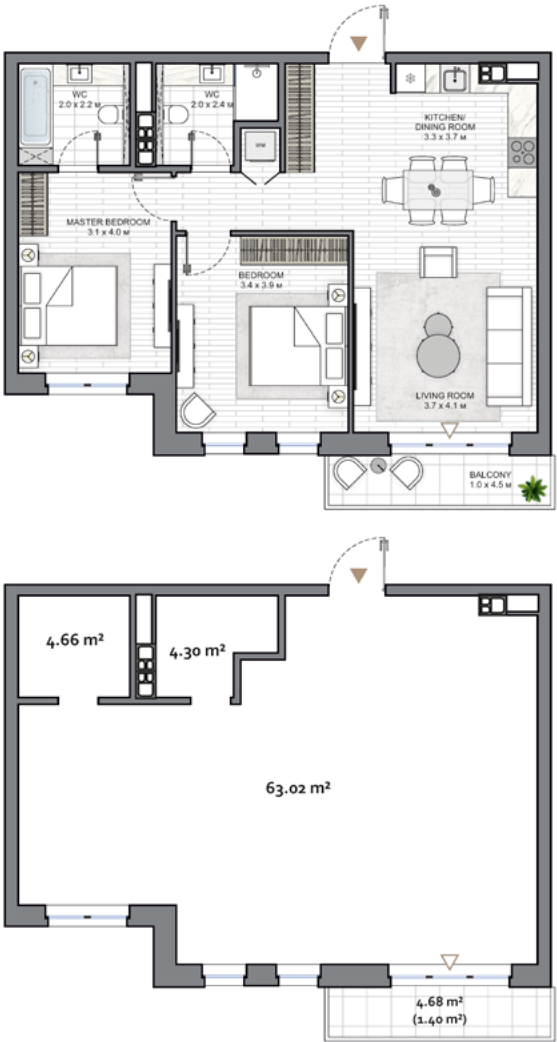
2
BEDROOM

NVW NORTH
WATERFRONT

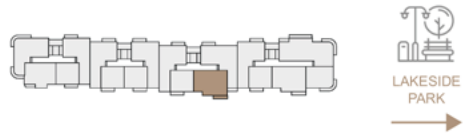
Alura 3

2 BEDROOM
TYPE C

APARTMENT AREA.....71.98 m² - 72.63 m²
BALCONY AREA.....4.68 (1.40 m²)
NET AREA.....72.63 m² - 73.38 m²



KEY PLAN 2-9 FLOORS



Disclaimer

1. All room dimensions are in metric and measured to structural elements and exclude wall finishes and construction tolerances.
2. All dimensions have been provided by our consultant architects.
3. All materials, dimensions, features and amenities are approximate at the time of printing.
4. Actual area may vary from stated area and unit direction may vary from unit to unit. Drawings not to scale. The developer reserves the right to make revisions to the floor plans and any features, materials, dimensions, drawings and amenities mentioned in this brochure without notice.

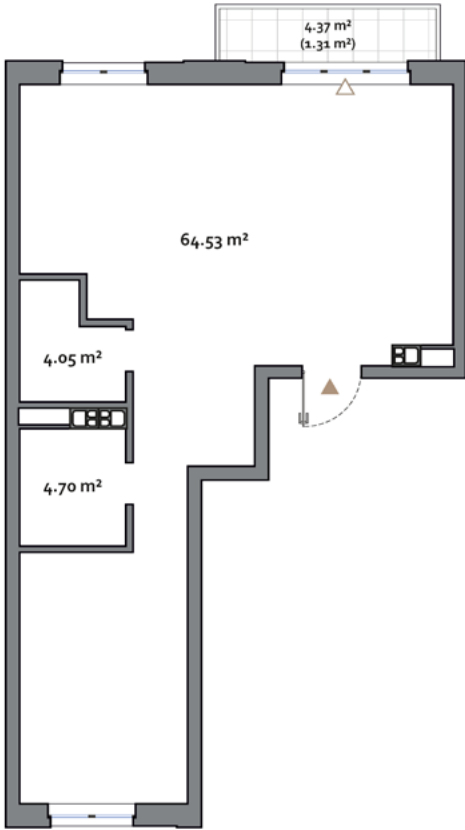
Disclaimer

1. All room dimensions are in metric and measured to structural elements and exclude wall finishes and construction tolerances.
2. All dimensions have been provided by our consultant architects.
3. All materials, dimensions, features and amenities are approximate at the time of printing.
4. Actual area may vary from stated area and unit direction may vary from unit to unit. Drawings not to scale. The developer reserves the right to make revisions to the floor plans and any features, materials, dimensions, drawings and amenities mentioned in this brochure without notice.

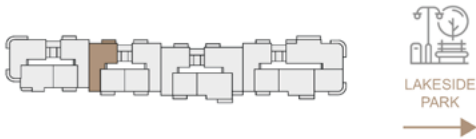
Alura 3

2 BEDROOM
TYPE D

APARTMENT AREA.....73.28 m²
BALCONY AREA.....4.37 (1.31 m²)
NET AREA.....74.59 m²



KEY PLAN 3-9 FLOORS



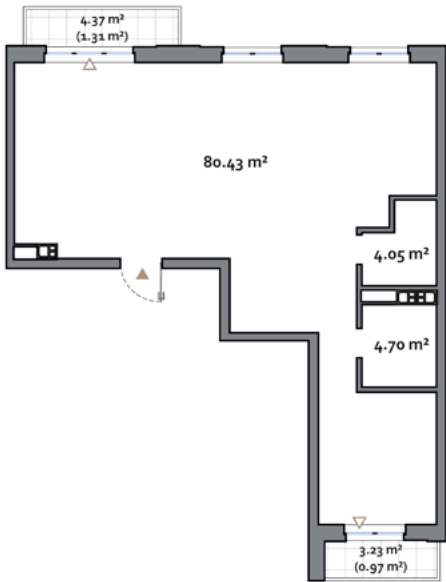
Disclaimer

1. All room dimensions are in metric and measured to structural elements and exclude wall finishes and construction tolerances.
2. All dimensions have been provided by our consultant architects.
3. All materials, dimensions, features and amenities are approximate at the time of printing.
4. Actual area may vary from stated area and unit direction may vary from unit to unit. Drawings not to scale. The developer reserves the right to make revisions to the floor plans and any features, materials, dimensions, drawings and amenities mentioned in this brochure without notice.

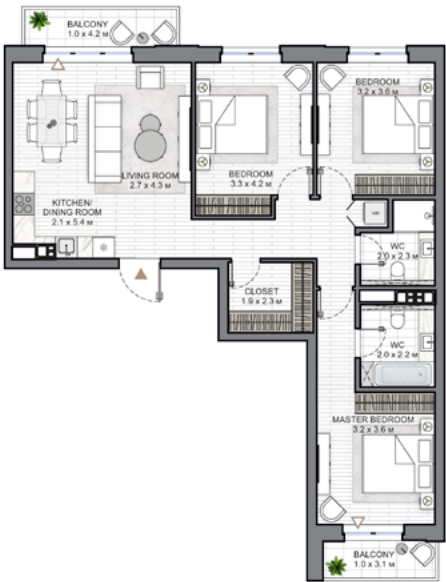
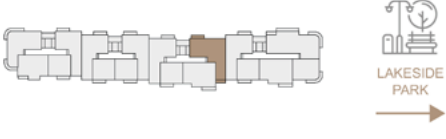
Alura 3

3 BEDROOM
TYPE A

APARTMENT AREA.....89.18 m² - 89.82 m²
BALCONY AREA.....7.60 (2.28 m²)
NET AREA.....89.82 m² - 91.46 m²



KEY PLAN 2-9 FLOORS



Disclaimer

1. All room dimensions are in metric and measured to structural elements and exclude wall finishes and construction tolerances.
2. All dimensions have been provided by our consultant architects.
3. All materials, dimensions, features and amenities are approximate at the time of printing.
4. Actual area may vary from stated area and unit direction may vary from unit to unit. Drawings not to scale. The developer reserves the right to make revisions to the floor plans and any features, materials, dimensions, drawings and amenities mentioned in this brochure without notice.

3
BEDROOM
DUPLEX

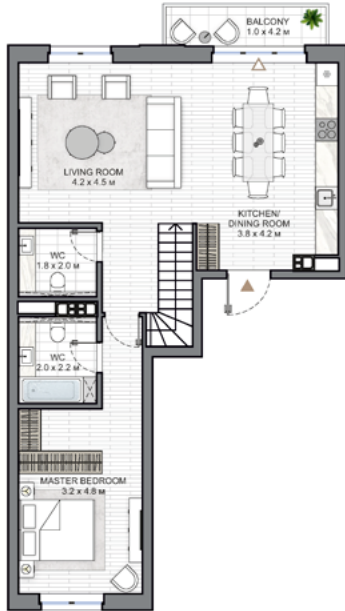
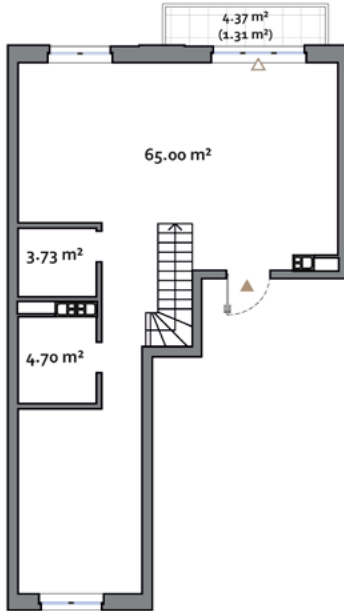
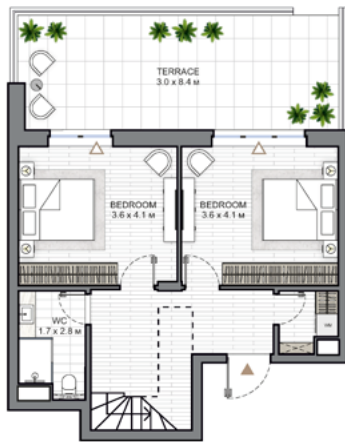
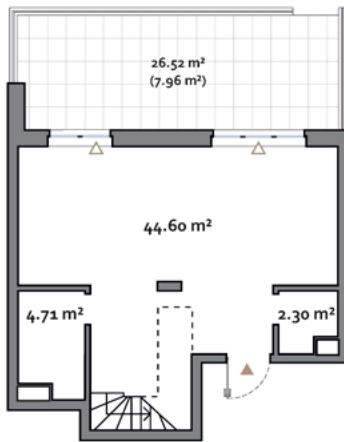
NV NORTH
WATERFRONT

Alura 3

3 BEDROOM
TYPE B

APARTMENT AREA.....125.04 m² - 127.37 m²
BALCONY AREA.....30.89 (9.27 m²) - 31.37 (9.41 m²)
NET AREA.....134.31 m² - 136.78 m²

KEY PLAN 1-2 FLOORS



Disclaimer
1. All room dimensions are in metric and measured to structural elements and exclude wall finishes and construction tolerances.
2. All dimensions have been provided by our consultant architects.
3. All materials, dimensions, features and amenities are approximate at the time of printing.
4. Actual area may vary from stated area and unit direction may vary from unit to unit. Drawings not to scale. The developer reserves the right to make revisions to the floor plans and any features, materials, dimensions, drawings and amenities mentioned in this brochure without notice.

4
BEDROOM

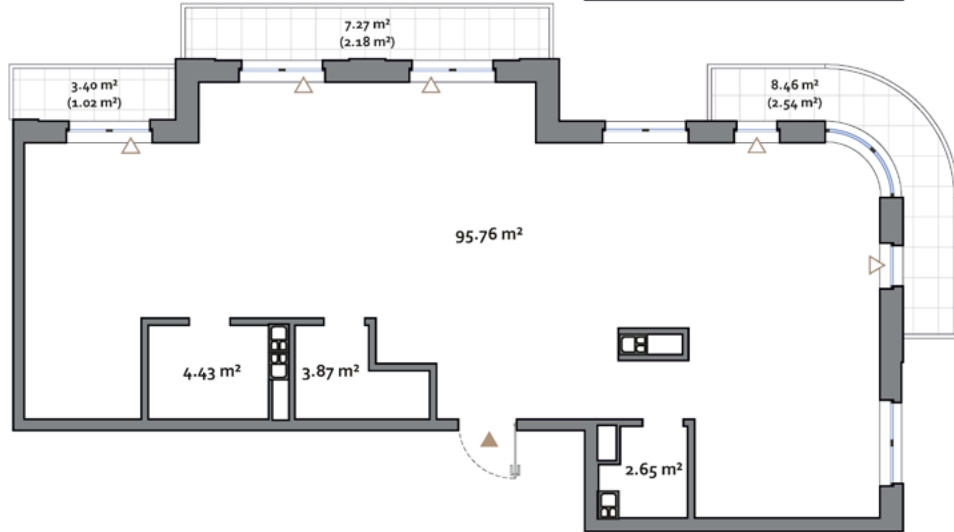
NV NORTH
WATERFRONT

Alura 3

4 BEDROOM
TYPE A

APARTMENT AREA.....106.71 m²
BALCONY AREA.....19.13 (5.74 m²)
NET AREA.....112.45 m²

KEY PLAN 3-8 FLOORS



Disclaimer
1. All room dimensions are in metric and measured to structural elements and exclude wall finishes and construction tolerances.
2. All dimensions have been provided by our consultant architects.
3. All materials, dimensions, features and amenities are approximate at the time of printing.
4. Actual area may vary from stated area and unit direction may vary from unit to unit. Drawings not to scale. The developer reserves the right to make revisions to the floor plans and any features, materials, dimensions, drawings and amenities mentioned in this brochure without notice.

Alura 3

NORTHWATERFRONT.BY



International number: +375 17 311-6888

Toll-free number: 8-801-100-3888

North Waterfront Sales Center,
Sverdlova str. 11, Minsk
Tsvirko str. 78, Minsk

NW NORTH
WATERFRONT