

Mayfair



NV NORTH WATERFRONT



North Waterfront

An exciting new destination for Belarus

The North Waterfront development is a bold new vision for a waterfront community in the heart of the capital that looks to the future whilst drawing inspiration from the neighborhood's rich history.

We have diverted the status quo towards prioritizing residents' well-being and experiences, focusing on the importance of quality amenities and resident's lifestyles by bringing the most incredible designers and architects to deliver world-class communities.

35

mins
From the
Airport

1

mins
From the
Ring Road

30

mins
From the
Railway Station

25

mins
From the
City Center

15

mins
From the
National Library

10

mins
From the
Sports Palace





- 

Exhibition Center
- 

Parks
- 

Ice Rink
- 

Schools
- 

Kid's Play Areas
- 

Dog Parks
- 

Cycling Track
- 

Kindergartens
- 

IT University
- 

Supermarkets
- 

Fishing Pier
- 

Medical Centers

Lakeside Park

Residents of North Waterfront will be able to enjoy the modern and healthy environment created by the Lakeside Park.

The park offers a wonderful atmosphere perfect for relaxing and socializing amidst a captivating blend of natural beauty and immersive attractions.



Green Parks



Art SCULPTURES



Amphitheater



Sports Areas



Fishing Pier



Urban Beach



Cycling Track



Jogging Trail



Barbecue Areas



Picnic Areas



Kid's Play Area



Cafes





Neighbourhood Square

Redefining lifestyle with an open park catering to the neighborhood, with its bespoke details, curated retail boutiques and avant-garde dining experiences.

This pedestrian friendly space located in the neighboring district will also become a space for entertainment and special events.



Retail



Restaurants & Cafes



Outdoor Events



Ice Rink



Art Sculptures



Park



Kid's Play Area



Picnic Areas





Residential Club

North Waterfront provides a unique experience that combines the benefits of neighborhood living with exclusive amenities and services.

The Residential Club, conveniently situated within a walking distance, offers elegantly styled spaces exclusive to residents, enriching contemporary living with comfort and effortless access to premium amenities.



Cinema



Games Area



Gym



Meeting Rooms



Co-working Area



Event Room



Children's Place



Cafe



Mayfair



Mayfair

Tucked into the heart of a vibrant green district, MAYFAIR invites you to experience a lifestyle of calm, connection, and contemporary living. With refined architecture, a tranquil private courtyard, and modern amenities.

MAYFAIR is a well-balanced house with a calm, residential character. Ideal for those who appreciate quality of life in a neighborhood built for the future.





THE JOY OF EVERYDAY
LIVING

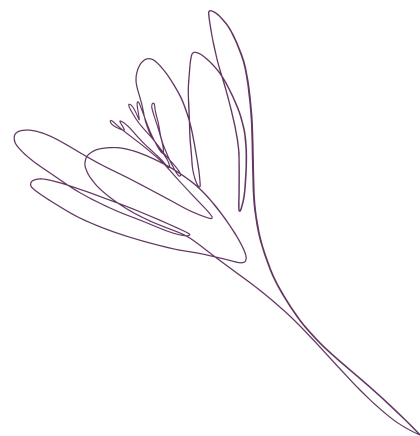




Interiors

From the inviting entrance lobbies to the elegant, well-designed hallways – MAYFAIR welcomes you with timeless interior aesthetics and quality materials.

- Designer lobbies with panoramic glazing & elegant styling
- Elegantly designed hallways
- Dedicated storage for strollers
- Pet paw-washing facilities



WHERE COMFORT MEETS QUIET SOPHISTICATION



Apartments at MAYFAIR are crafted with flexibility and function in mind. High ceilings, panoramic windows, and open layouts provide the perfect foundation for modern lifestyle.



THOUGHTFUL COMFORT
IN EVERY DETAIL

BAKERY

BAKERY

BAKERY

Mayfair



NVW NORTH WATERFRONT

Mayfair

STUDIO TYPE E

APARTMENT AREA30.95 m² - 31.47 m²
BALCONY AREA15.03 (4.51 m²)
NET AREA31.46 m² - 35.46 m²

KEY PLAN 1-10 FLOORS



Disclaimer

1. All room dimensions are in metric and measured to structural elements and exclude wall finishes and construction tolerances.
2. All dimensions have been provided by our consultant architects.
3. All materials, dimensions, features and amenities are approximate at the time of printing.
4. Actual area may vary from stated area and unit direction may vary from unit to unit. Drawings not to scale. The developer reserves the right to make revisions to the floor plans and any features, materials, dimensions, drawings and amenities mentioned in this brochure without notice.



1 BR

NVW NORTH WATERFRONT

Mayfair

1 BEDROOM TYPE B

APARTMENT AREA42.74 m² - 42.98 m²
BALCONY AREA3.90 (1.17 m²) - 3.93 (1.18 m²)
NET AREA42.98 m² - 44.05 m²

KEY PLAN 1-10 FLOORS



Disclaimer

1. All room dimensions are in metric and measured to structural elements and exclude wall finishes and construction tolerances.
2. All dimensions have been provided by our consultant architects.
3. All materials, dimensions, features and amenities are approximate at the time of printing.
4. Actual area may vary from stated area and unit direction may vary from unit to unit. Drawings not to scale. The developer reserves the right to make revisions to the floor plans and any features, materials, dimensions, drawings and amenities mentioned in this brochure without notice.



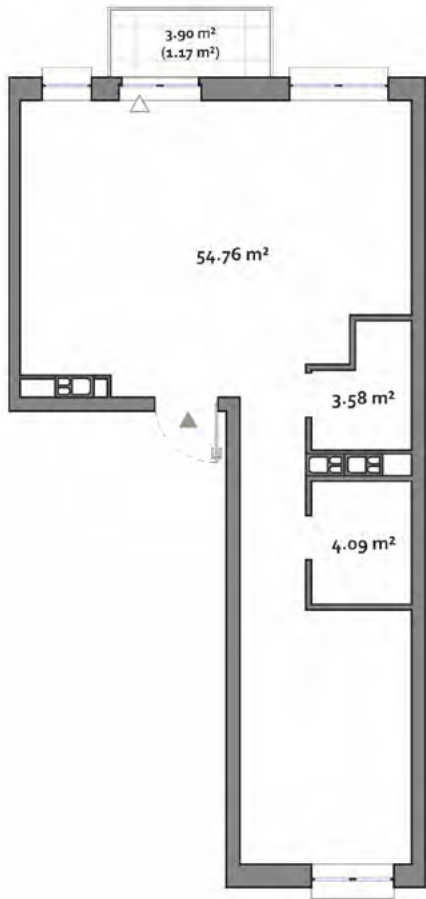
NW NORTH WATERFRONT

Mayfair

2 BEDROOM TYPE A

APARTMENT AREA.....60.67 m² - 62.43 m²
BALCONY AREA.....3.90 (1.17 m²) - 7.80 (2.34 m²)
NET AREA.....62.04 m² - 63.60 m²

KEY PLAN 1-10 FLOORS



Disclaimer

- 1. All room dimensions are in metric and measured to structural elements and exclude wall finishes and construction tolerances.
- 2. All dimensions have been provided by our consultant architects.
- 3. All materials, dimensions, features and amenities are approximate at the time of printing.
- 4. Actual area may vary from stated area and unit direction may vary from unit to unit. Drawings not to scale. The developer reserves the right to make revisions to the floor plans and any features, materials, dimensions, drawings and amenities mentioned in this brochure without notice.



NW NORTH WATERFRONT

Mayfair

2 BEDROOM TYPE C

APARTMENT AREA65.66 m² - 66.79 m²
BALCONY AREA.....11.38 (3.41 m²) - 28.55 (8.57 m²)
NET AREA65.66 m² - 75.36 m²

KEY PLAN 1-10 FLOORS



Disclaimer

- 1. All room dimensions are in metric and measured to structural elements and exclude wall finishes and construction tolerances.
- 2. All dimensions have been provided by our consultant architects.
- 3. All materials, dimensions, features and amenities are approximate at the time of printing.
- 4. Actual area may vary from stated area and unit direction may vary from unit to unit. Drawings not to scale. The developer reserves the right to make revisions to the floor plans and any features, materials, dimensions, drawings and amenities mentioned in this brochure without notice.



3 BR

NVW NORTH WATERFRONT

Mayfair

3 BEDROOM
TYPE A

APARTMENT AREA.....81.63 m²
BALCONY AREA.....11.45 (4.61 m²) - 15.35 (4.61 m²)
NET AREA.....85.07 m² - 86.24 m²

KEY PLAN 2-8 FLOORS



4 BR

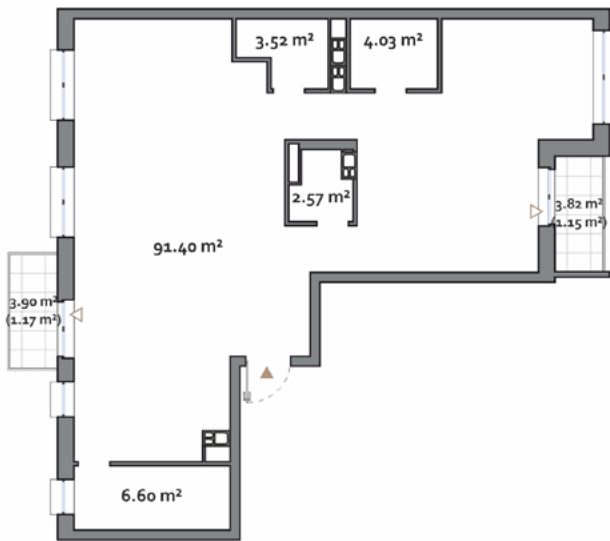
NVW NORTH WATERFRONT

Mayfair

4 BEDROOM
TYPE A

APARTMENT AREA.....103.78 m² - 108.57 m²
BALCONY AREA.....7.72 (2.32 m²) - 13.15 (3.95 m²)
NET AREA.....107.73 m² - 110.89 m²

KEY PLAN 2-10 FLOORS



Disclaimer

1. All room dimensions are in metric and measured to structural elements and exclude wall finishes and construction tolerances.
2. All dimensions have been provided by our consultant architects.
3. All materials, dimensions, features and amenities are approximate at the time of printing.
4. Actual area may vary from stated area and unit direction may vary from unit to unit. Drawings not to scale. The developer reserves the right to make revisions to the floor plans and any features, materials, dimensions, drawings and amenities mentioned in this brochure without notice.



Disclaimer

1. All room dimensions are in metric and measured to structural elements and exclude wall finishes and construction tolerances.
2. All dimensions have been provided by our consultant architects.
3. All materials, dimensions, features and amenities are approximate at the time of printing.
4. Actual area may vary from stated area and unit direction may vary from unit to unit. Drawings not to scale. The developer reserves the right to make revisions to the floor plans and any features, materials, dimensions, drawings and amenities mentioned in this brochure without notice.



Mayfair

NORTHWATERFRONT.BY



International number: +375 17 311-6888

Toll-free number: 8-801-100-3888

North Waterfront Sales Center,
Sverdlova str. 11, Minsk
Tsvirko str. 78, Minsk

NW NORTH
WATERFRONT