

# BELMONT 2







# North Waterfront

An exciting new destination for Belarus

The North Waterfront development is a bold new vision for a waterfront community in the heart of the capital that looks to the future whilst drawing inspiration from the neighborhood's rich history.

We have diverted the status quo towards prioritizing residents' well-being and experiences, focusing on the importance of quality amenities and resident's lifestyles by bringing the most incredible designers and architects to deliver world-class communities.



35

mins  
From the  
Airport

1

mins  
From the  
Ring Road

30

mins  
From the  
Railway Station

25

mins  
From the  
City Center

15

mins  
From the  
National Library

10

mins  
From the  
Sports Palace








- 

Exhibition Center
- 


Parks
- 

Ice Rink
- 

Schools
- 

Kid's Play Areas
- 

Dog Parks
- 

Cycling Track
- 

Kindergartens
- 

IT University
- 

Supermarkets
- 

Fishing Pier
- 

Medical Centers



# Lakeside Park

Residents of North Waterfront will be able to enjoy the modern and healthy environment created by the Lakeside Park.

The park offers a wonderful atmosphere perfect for relaxing and socializing amidst a captivating blend of natural beauty and immersive attractions.



Green Parks



Art SCULPTURES



Amphitheater



Sports Areas



Fishing Pier



Urban Beach



Cycling Track



Jogging Trail



Barbecue Areas



Picnic Areas



Kid's Play Area



Cafes







# Neighbourhood Square

Redefining lifestyle with an open park catering to the neighborhood, with its bespoke details, curated retail boutiques and avant-garde dining experiences.

This pedestrian friendly space located in the neighboring district will also become a space for entertainment and special events.



Retail



Restaurants & Cafes



Outdoor Events



Ice Rink



Art Sculptures



Park



Kid's Play Area



Picnic Areas





# Residential Club

North Waterfront provides a unique experience that combines the benefits of neighborhood living with exclusive amenities and services.

The Residential Club, conveniently situated on the first floor, offers elegantly styled spaces exclusive to residents, enriching contemporary living with comfort and effortless access to premium amenities.



Cinema



Play Area



Gym



Table Tennis



Music Room



Co-working Areas



Event Room



Children's Place



Cafe



Sauna













# BELMONT 2







# BELMONT 2

BELMONT 2 emerges as a statement of timeless elegance – a place where refined architecture meets the rhythm of contemporary life.

Feel the premium vibe with the new Residential Club on the ground floor of your house – a serene retreat designed for connection, creativity, and comfort. Whether it's an important event to celebrate, an evening gathering for a movie, or a quiet moment to work, this unique space elevates the daily experience into something truly special.



INSPIRED LIVING AT THE HEART  
OF THE NEIGHBORHOOD











# Interiors

BELMONT 2 combines classic sophistication with modern sensibility. From fully equipped kitchens to custom-fitted wardrobes and high-quality fixtures, each detail is curated to enhance your experience and reflect the character of refined living. Choose furniture, appliances and move-in!

- designer lobbies with panoramic glazing
- elegantly designed hallways
- dedicated storage for strollers and pet paw-washing facilities
- exquisite interior finishes
- modern furniture and quality plumbing
- built-in kitchen





PREMIUM DESIGN WITH  
A PERSONAL TOUCH

The interiors are finished to perfection, with natural textures, warm tones, and thoughtful accents that create a ready-made space for living beautifully from day one.



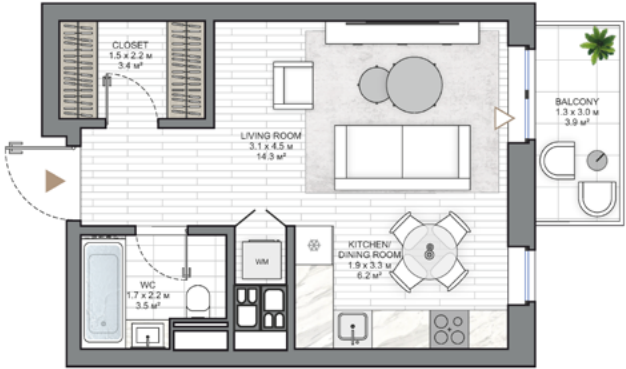
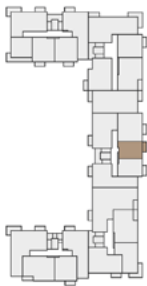


BELMONT 2

STUDIO  
TYPE B

APARTMENT AREA.....31.52 m<sup>2</sup> - 31.97 m<sup>2</sup>  
BALCONY AREA.....3.83 (1.15 m<sup>2</sup>)  
NET AREA.....31.52 m<sup>2</sup> - 33.12 m<sup>2</sup>

KEY PLAN 2-8 FLOORS



**Disclaimer**  
1. All room dimensions are in metric and measured to structural elements and exclude wall finishes and construction tolerances.  
2. All dimensions have been provided by our consultant architects.  
3. All materials, dimensions, features and amenities are approximate at the time of printing.  
4. Actual area may vary from stated area and unit direction may vary from unit to unit. Drawings not to scale. The developer reserves the right to make revisions to the floor plans and any features, materials, dimensions, drawings and amenities mentioned in this brochure without notice.



BELMONT 2

1 BEDROOM  
TYPE B

APARTMENT AREA.....42.81 m<sup>2</sup> - 43.31 m<sup>2</sup>  
BALCONY AREA.....3.83 (1.15 m<sup>2</sup>)  
NET AREA.....43.30 m<sup>2</sup> - 43.96 m<sup>2</sup>

KEY PLAN 1-8 FLOORS



**Disclaimer**  
1. All room dimensions are in metric and measured to structural elements and exclude wall finishes and construction tolerances.  
2. All dimensions have been provided by our consultant architects.  
3. All materials, dimensions, features and amenities are approximate at the time of printing.  
4. Actual area may vary from stated area and unit direction may vary from unit to unit. Drawings not to scale. The developer reserves the right to make revisions to the floor plans and any features, materials, dimensions, drawings and amenities mentioned in this brochure without notice.





NV NORTH WATERFRONT

BELMONT 2

2 BEDROOM

TYPE B

APARTMENT AREA.....63.67 m<sup>2</sup> - 64.05 m<sup>2</sup>  
BALCONY AREA.....3.83 (1.15 m<sup>2</sup>)  
NET AREA.....64.02 m<sup>2</sup> - 64.84 m<sup>2</sup>

KEY PLAN 2-8 FLOORS



Disclaimer

1. All room dimensions are in metric and measured to structural elements and exclude wall finishes and construction tolerances.
2. All dimensions have been provided by our consultant architects.
3. All materials, dimensions, features and amenities are approximate at the time of printing.
4. Actual area may vary from stated area and unit direction may vary from unit to unit. Drawings not to scale. The developer reserves the right to make revisions to the floor plans and any features, materials, dimensions, drawings and amenities mentioned in this brochure without notice.



NV NORTH WATERFRONT

BELMONT 2

2 BEDROOM

TYPE G

APARTMENT AREA.....83.82 m<sup>2</sup> - 84.14 m<sup>2</sup>  
BALCONY AREA.....14.40 (4.32 m<sup>2</sup>)-14.73 (4.42 m<sup>2</sup>)  
NET AREA.....88.14 m<sup>2</sup> - 88.56 m<sup>2</sup>

KEY PLAN 2-8 FLOORS



Disclaimer

1. All room dimensions are in metric and measured to structural elements and exclude wall finishes and construction tolerances.
2. All dimensions have been provided by our consultant architects.
3. All materials, dimensions, features and amenities are approximate at the time of printing.
4. Actual area may vary from stated area and unit direction may vary from unit to unit. Drawings not to scale. The developer reserves the right to make revisions to the floor plans and any features, materials, dimensions, drawings and amenities mentioned in this brochure without notice.



NVW NORTH WATERFRONT  
BELMONT 2

3 BEDROOM  
TYPE A

APARTMENT AREA.....81.48 m<sup>2</sup> - 81.79 m<sup>2</sup>  
BALCONY AREA.....8.20(2.46 m<sup>2</sup>) - 12.23(3.67 m<sup>2</sup>)  
NET AREA.....83.94 m<sup>2</sup> - 85.46 m<sup>2</sup>

KEY PLAN 2-8 FLOORS



NVW NORTH WATERFRONT  
BELMONT 2

4 BEDROOM  
TYPE A

APARTMENT AREA.....103.49 m<sup>2</sup> - 103.80 m<sup>2</sup>  
BALCONY AREA.....7.43(2.23 m<sup>2</sup>) - 15.90(4.77 m<sup>2</sup>)  
NET AREA.....105.72 m<sup>2</sup> - 108.57 m<sup>2</sup>

KEY PLAN 2-8 FLOORS



Disclaimer

1. All room dimensions are in metric and measured to structural elements and exclude wall finishes and construction tolerances.
2. All dimensions have been provided by our consultant architects.
3. All materials, dimensions, features and amenities are approximate at the time of printing.
4. Actual area may vary from stated area and unit direction may vary from unit to unit. Drawings not to scale. The developer reserves the right to make revisions to the floor plans and any features, materials, dimensions, drawings and amenities mentioned in this brochure without notice.



Disclaimer

1. All room dimensions are in metric and measured to structural elements and exclude wall finishes and construction tolerances.
2. All dimensions have been provided by our consultant architects.
3. All materials, dimensions, features and amenities are approximate at the time of printing.
4. Actual area may vary from stated area and unit direction may vary from unit to unit. Drawings not to scale. The developer reserves the right to make revisions to the floor plans and any features, materials, dimensions, drawings and amenities mentioned in this brochure without notice.





# BELMONT 2

NV NORTH  
WATERFRONT

NORTHWATERFRONT.BY



International number: +375 17 311-6888

Toll-free number: 8-801-100-3888

North Waterfront Sales Center,

Sverdlova str. 11, Minsk

Tsvirko str. 78, Minsk