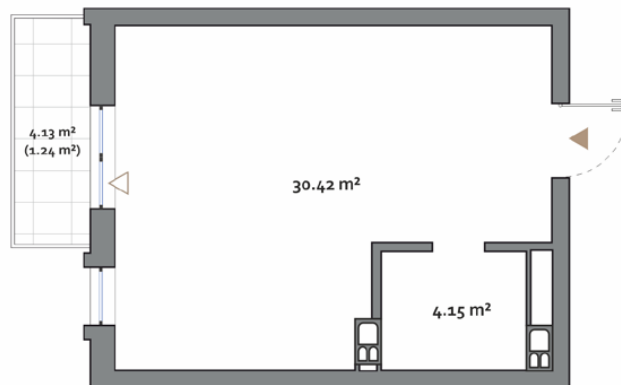
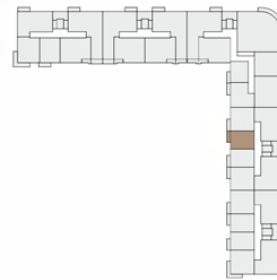


Rosemont

STUDIO TYPE B

APARTMENT AREA..... 32.14 m² - 34.81 m²
 BALCONY AREA..... 3.26 (0.98 m²) - 5.21 (1.56 m²)
 NET AREA..... 32.14 m² - 35.81 m²

KEY PLAN 2-10 FLOORS



Disclaimer

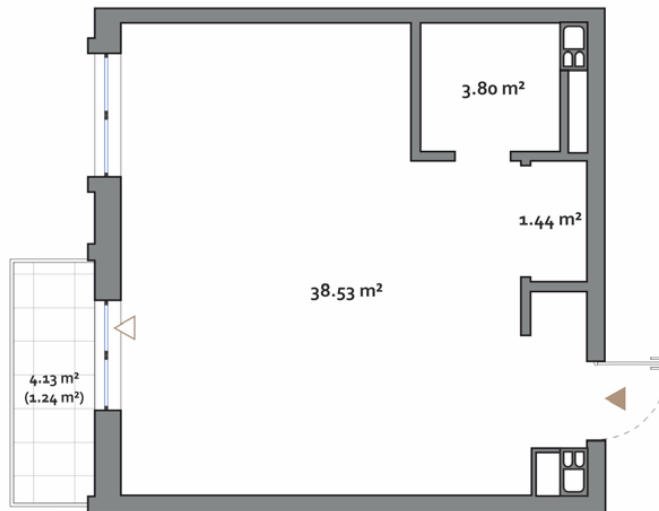
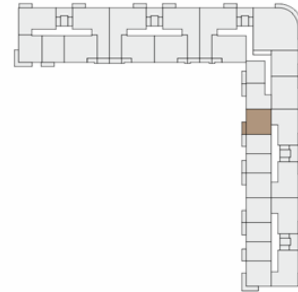
1. All room dimensions are in metric and measured to structural elements and exclude wall finishes and construction tolerances.
2. All dimensions have been provided by our consultant architects.
3. All materials, dimensions, features and amenities are approximate at the time of printing.
4. Actual area may vary from stated area and unit direction may vary from unit to unit. Drawings not to scale. The developer reserves the right to make revisions to the floor plans and any features, materials, dimensions, drawings and amenities mentioned in this brochure without notice.

Rosemont

1 BEDROOM TYPE E

APARTMENT AREA 41.18 m² - 44.30 m²
 BALCONY AREA 3.25 (0.98 m²) - 6.67 (2.00 m²)
 NET AREA 42.16 m² - 45.51 m²

KEY PLAN 2-10 FLOORS



Disclaimer

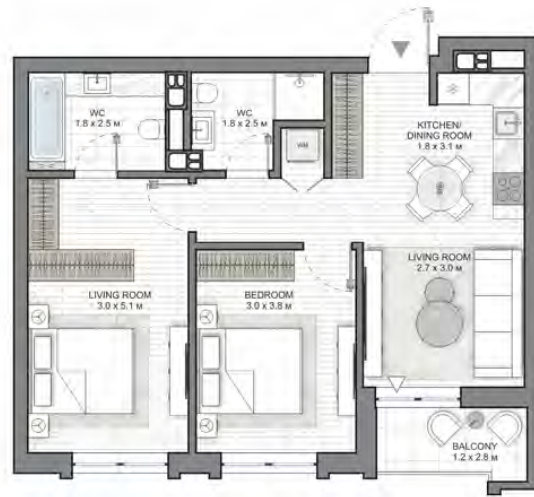
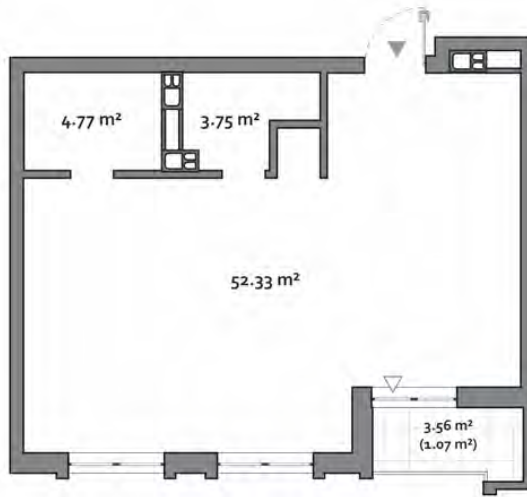
1. All room dimensions are in metric and measured to structural elements and exclude wall finishes and construction tolerances.
2. All dimensions have been provided by our consultant architects.
3. All materials, dimensions, features and amenities are approximate at the time of printing.
4. Actual area may vary from stated area and unit direction may vary from unit to unit. Drawings not to scale. The developer reserves the right to make revisions to the floor plans and any features, materials, dimensions, drawings and amenities mentioned in this brochure without notice.

Rosemont

2 BEDROOM TYPE B

APARTMENT AREA.....58.01 m² - 60.86 m²
 BALCONY AREA.....2.67 (0.80 m²) - 11.13 (3.34 m²)
 NET AREA.....58.81 m² - 61.93 m²

KEY PLAN 2-10 FLOORS



Disclaimer

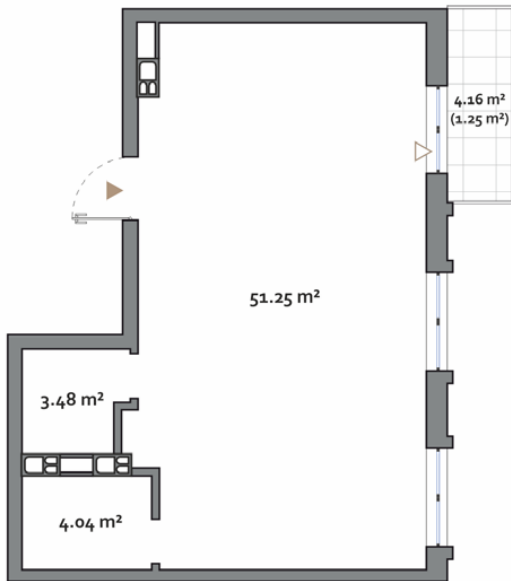
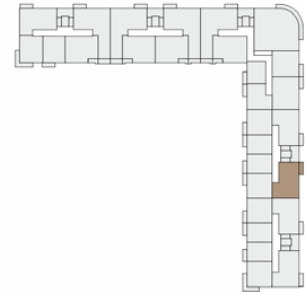
1. All room dimensions are in metric and measured to structural elements and exclude wall finishes and construction tolerances.
2. All dimensions have been provided by our consultant architects.
3. All materials, dimensions, features and amenities are approximate at the time of printing.
4. Actual area may vary from stated area and unit direction may vary from unit to unit. Drawings not to scale. The developer reserves the right to make revisions to the floor plans and any features, materials, dimensions, drawings and amenities mentioned in this brochure without notice.

Rosemont

2 BEDROOM TYPE C

APARTMENT AREA.....54.29 m² - 58.77 m²
 BALCONY AREA.....3.79 (1.14 m²) - 9.42 (2.83 m²)
 NET AREA.....55.43 m² - 60.02 m²

KEY PLAN 2-10 FLOORS



Disclaimer

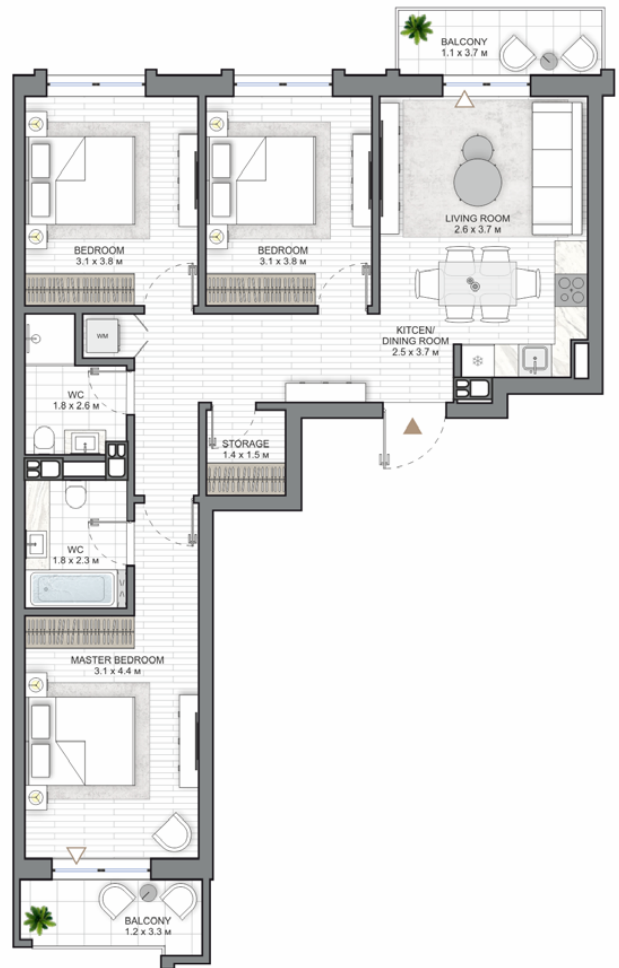
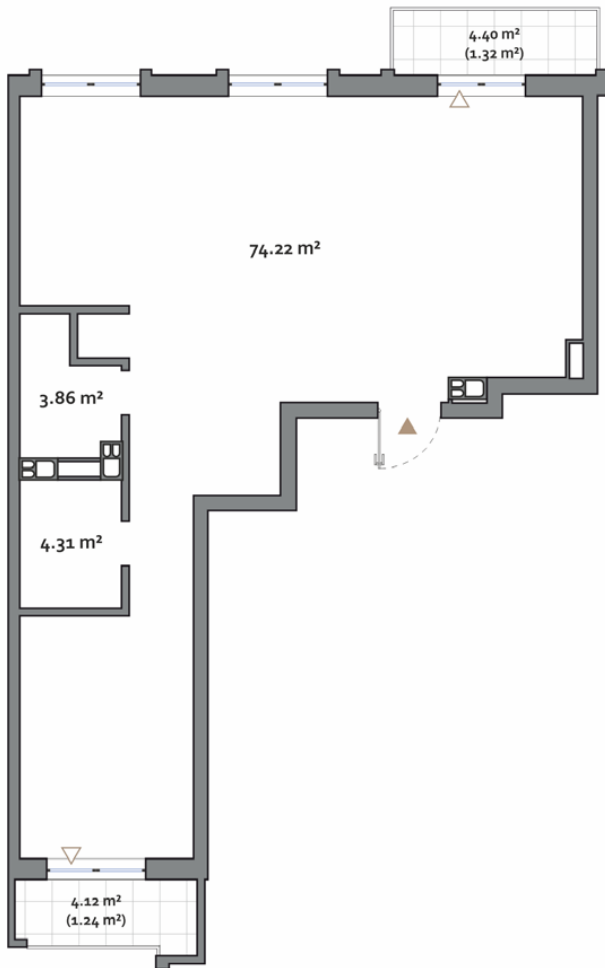
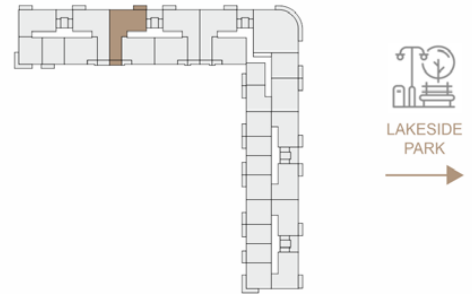
1. All room dimensions are in metric and measured to structural elements and exclude wall finishes and construction tolerances.
2. All dimensions have been provided by our consultant architects.
3. All materials, dimensions, features and amenities are approximate at the time of printing.
4. Actual area may vary from stated area and unit direction may vary from unit to unit. Drawings not to scale. The developer reserves the right to make revisions to the floor plans and any features, materials, dimensions, drawings and amenities mentioned in this brochure without notice.

Rosemont

3 BEDROOM TYPE A

APARTMENT AREA..... 77.16 m² - 83.57 m²
 BALCONY AREA..... 6.49 (2.09 m²) - 16.67 (4.71 m²)
 NET AREA..... 79.22 m² - 86.14 m²

KEY PLAN 2-10 FLOORS



Disclaimer

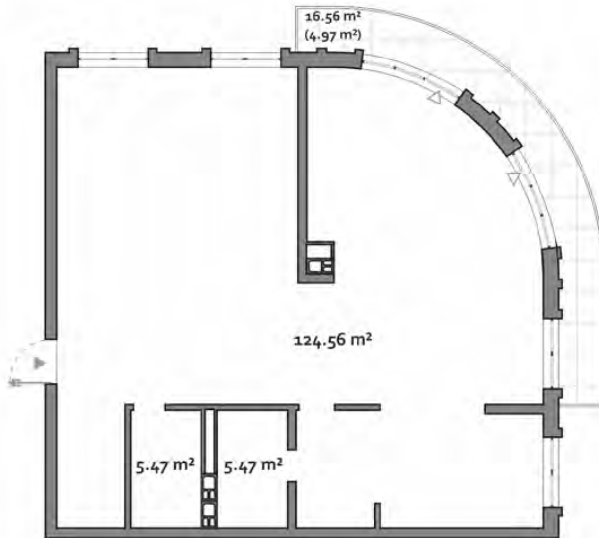
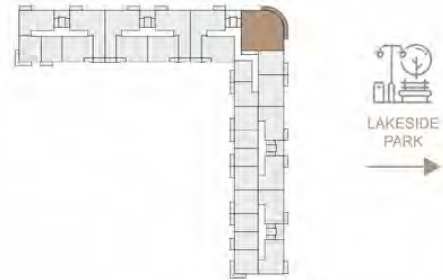
1. All room dimensions are in metric and measured to structural elements and exclude wall finishes and construction tolerances.
2. All dimensions have been provided by our consultant architects.
3. All materials, dimensions, features and amenities are approximate at the time of printing.
4. Actual area may vary from stated area and unit direction may vary from unit to unit. Drawings not to scale. The developer reserves the right to make revisions to the floor plans and any features, materials, dimensions, drawings and amenities mentioned in this brochure without notice.

Rosemont

4 BEDROOM TYPE A

APARTMENT AREA 125.97 m² - 135.50 m²
 BALCONY AREA 12.55 (3.77 m²) - 21.39 (6.42 m²)
 NET AREA 135.18 m² - 140.47 m²

KEY PLAN 2-10 FLOORS



Disclaimer

1. All room dimensions are in metric and measured to structural elements and exclude wall finishes and construction tolerances.
2. All dimensions have been provided by our consultant architects.
3. All materials, dimensions, features and amenities are approximate at the time of printing.
4. Actual area may vary from stated area and unit direction may vary from unit to unit. Drawings not to scale. The developer reserves the right to make revisions to the floor plans and any features, materials, dimensions, drawings and amenities mentioned in this brochure without notice.