

Rosemont

NV NORTH WATERFRONT





North Waterfront

An exciting new destination for Belarus

The North Waterfront development is a bold new vision for a waterfront community in the heart of the capital that looks to the future whilst drawing inspiration from the neighborhood's rich history.

We have diverted the status quo towards prioritizing residents' well-being and experiences, focusing on the importance of quality amenities and resident's lifestyles by bringing the most incredible designers and architects to deliver world-class communities.

35

mins
From the
Airport

25

mins
From the
City Center

1

mins
From the
Ring Road

15

mins
From the
National Library

30

mins
From the
Railway Station

10

mins
From the
Sports Palace





Exhibition Center



Parks



Ice Rink



Schools



Kid's Play Areas



Dog Parks



Cycling Track



Kindergartens



IT University



Supermarkets



Fishing Pier



Medical Centers



Lakeside Park

Residents of North Waterfront will be able to enjoy the modern and healthy environment created by the Lakeside Park.

The park offers a wonderful atmosphere perfect for relaxing and socializing amidst a captivating blend of natural beauty and immersive attractions.



Green Parks



Art Sculptures



Amphitheater



Sports Areas



Fishing Pier



Urban Beach



Cycling Track



Jogging Trail



Barbecue Areas



Picnic Areas



Kid's Play Area



Cafes



Neighbourhood Square

Redefining lifestyle with an open park catering to the neighborhood, with its bespoke details, curated retail boutiques and avant-garde dining experiences.

This pedestrian friendly space located in the neighboring district will also become a space for entertainment and special events.



Retail



Restaurants & Cafes



Outdoor Events



Ice Rink



Art Sculptures



Park



Kid's Play Area



Picnic Areas



Residential Club

North Waterfront provides a unique experience that combines the benefits of neighborhood living with exclusive amenities and services.

The Residential Club, conveniently situated within a walking distance, offers elegantly styled spaces exclusive to residents, enriching contemporary living with comfort and effortless access to premium amenities.



Cinema



Games Area



Gym



Meeting Rooms



Co-working Area



Event Room



Children's Place



Cafe



Rosemont





Rosemont offers a refined selection of modern residential apartments, complemented by a prime location by pocket park and an array of nearby amenities. Residents can enjoy blending upscale living with everyday practicality.

Explore amenities designed for every interest, from dynamic fitness and health centers to peaceful and serene areas. For discoverers, thinkers, and those with a vibrant personality, there's something for everyone.

Rosemont



STEP INTO ELEVATED LIVING

Step outside to vibrant green spaces perfect for jogging, strolling, and relaxing, offering a harmonious blend of city convenience and natural beauty.



Oberon 1

Car Park

Wellton

Kindergarten

Car Park

Rosemont

LUXURY LIVING IN EVERY ASPECT

Step into elevated living with Rosemont. The neighborhood caters to all your requirements, fostering a lively ambiance brimming with vitality and hospitality wherever you wander.



Rosemont



Interiors

Explore our modern apartments from studios to 4-bedroom, all designed for serenity and convenience. Revel in the bright, open living areas featuring picturesque views on park and new fascinating sculptures.

Residents will enjoy a seamless fusion of modern design and functionality in each corner, starting from inviting hotel-level lobby and hallways, ending with a private landscaped park.

- Designer lobbies with panoramic glazing
- Elegantly designed hallways
- Dedicated storage for strollers and pet paw-washing facilities





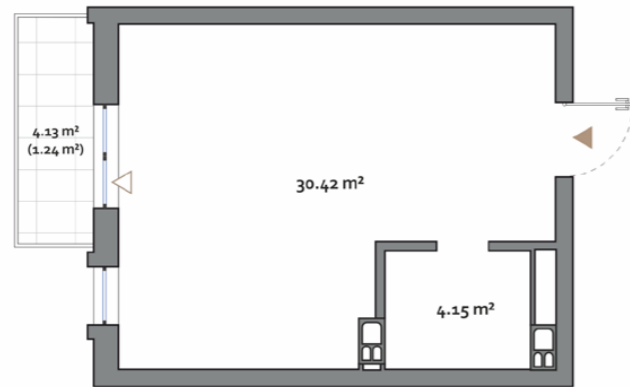
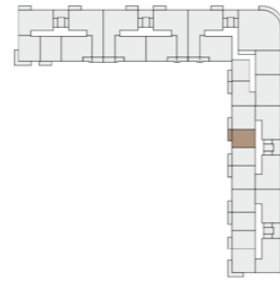
INSPIRED BY MAGNIFICENT
VIEWS

Rosemont

STUDIO TYPE B

APARTMENT AREA 32.14 m² - 34.81 m²
 BALCONY AREA 3.26 (0.98 m²) - 5.21 (1.56 m²)
 NET AREA 32.14 m² - 35.81 m²

KEY PLAN 2-10 FLOORS



Disclaimer

1. All room dimensions are in metric and measured to structural elements and exclude wall finishes and construction tolerances.
2. All dimensions have been provided by our consultant architects.
3. All materials, dimensions, features and amenities are approximate at the time of printing.
4. Actual area may vary from stated area and unit direction may vary from unit to unit. Drawings not to scale. The developer reserves the right to make revisions to the floor plans and any features, materials, dimensions, drawings and amenities mentioned in this brochure without notice.

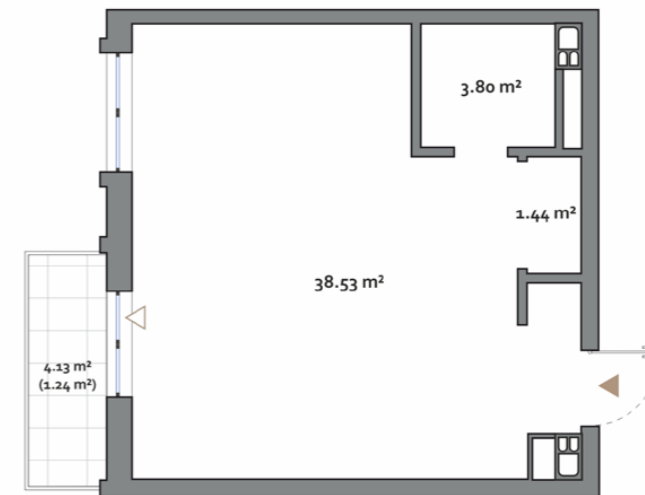
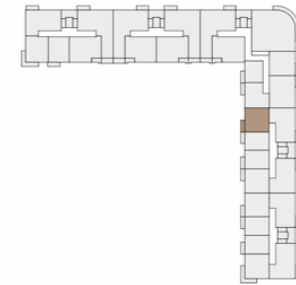
1 BR

Rosemont

1 BEDROOM TYPE E

APARTMENT AREA 41.18 m² - 44.30 m²
 BALCONY AREA 3.25 (0.98 m²) - 6.67 (2.00 m²)
 NET AREA 42.16 m² - 45.51 m²

KEY PLAN 2-10 FLOORS

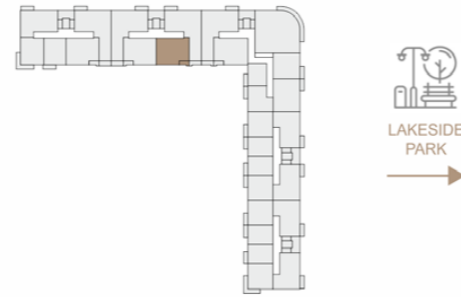


Disclaimer

1. All room dimensions are in metric and measured to structural elements and exclude wall finishes and construction tolerances.
2. All dimensions have been provided by our consultant architects.
3. All materials, dimensions, features and amenities are approximate at the time of printing.
4. Actual area may vary from stated area and unit direction may vary from unit to unit. Drawings not to scale. The developer reserves the right to make revisions to the floor plans and any features, materials, dimensions, drawings and amenities mentioned in this brochure without notice.

Rosemont

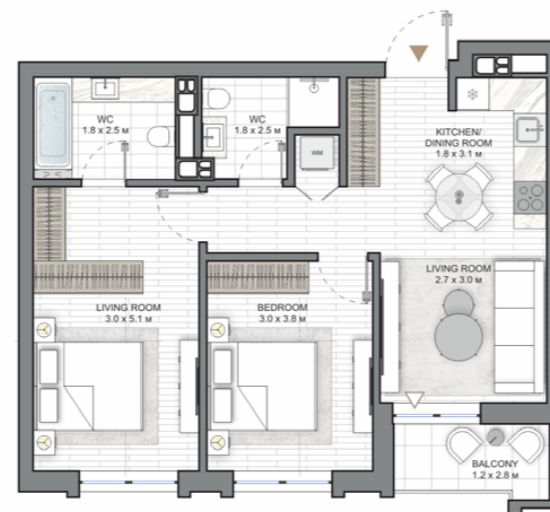
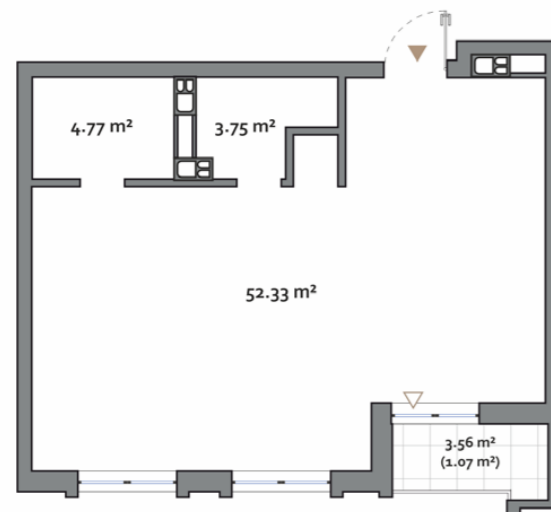
KEY PLAN 2-10 FLOORS



2 BR

2 BEDROOM TYPE B

APARTMENT AREA.....58.01 m² - 60.86 m²
 BALCONY AREA.....2.67 (0.80 m²) - 11.13 (3.34 m²)
 NET AREA.....58.81 m² - 61.93 m²

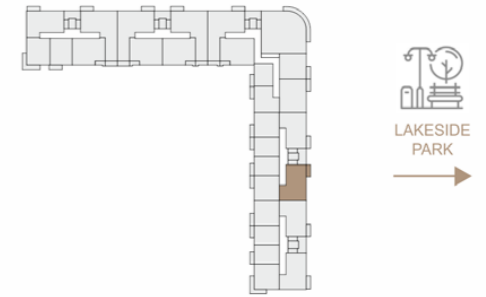


Disclaimer

1. All room dimensions are in metric and measured to structural elements and exclude wall finishes and construction tolerances.
2. All dimensions have been provided by our consultant architects.
3. All materials, dimensions, features and amenities are approximate at the time of printing.
4. Actual area may vary from stated area and unit direction may vary from unit to unit. Drawings not to scale. The developer reserves the right to make revisions to the floor plans and any features, materials, dimensions, drawings and amenities mentioned in this brochure without notice.

Rosemont

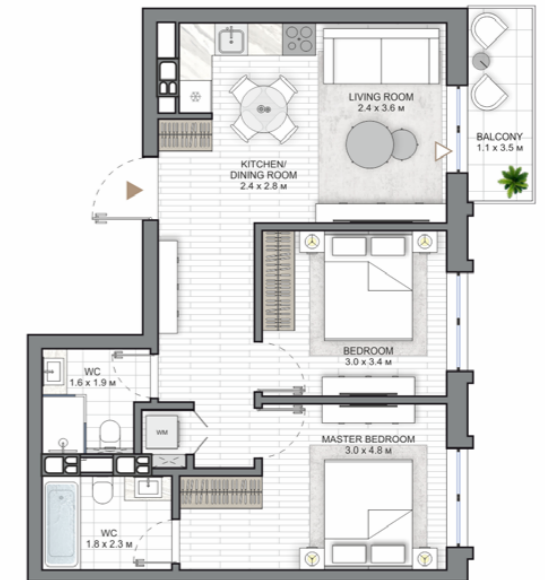
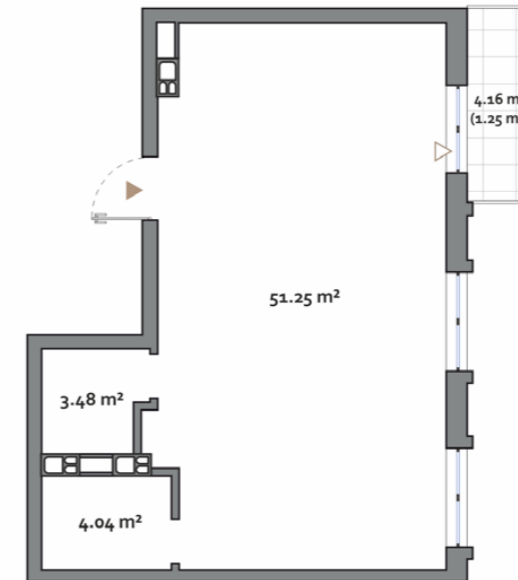
KEY PLAN 2-10 FLOORS



2 BR

2 BEDROOM TYPE C

APARTMENT AREA.....54.29 m² - 58.77 m²
 BALCONY AREA.....3.79 (1.14 m²) - 9.42 (2.83 m²)
 NET AREA.....55.43 m² - 60.02 m²



Disclaimer

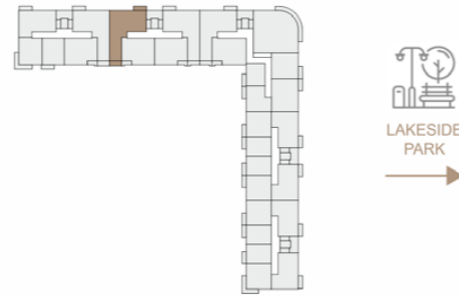
1. All room dimensions are in metric and measured to structural elements and exclude wall finishes and construction tolerances.
2. All dimensions have been provided by our consultant architects.
3. All materials, dimensions, features and amenities are approximate at the time of printing.
4. Actual area may vary from stated area and unit direction may vary from unit to unit. Drawings not to scale. The developer reserves the right to make revisions to the floor plans and any features, materials, dimensions, drawings and amenities mentioned in this brochure without notice.

Rosemont

3 BEDROOM TYPE A

APARTMENT AREA.....77.16 m² - 83.57 m²
 BALCONY AREA.....6.49 (2.09 m²) - 16.67 (4.71 m²)
 NET AREA.....79.22 m² - 86.14 m²

KEY PLAN 2-10 FLOORS



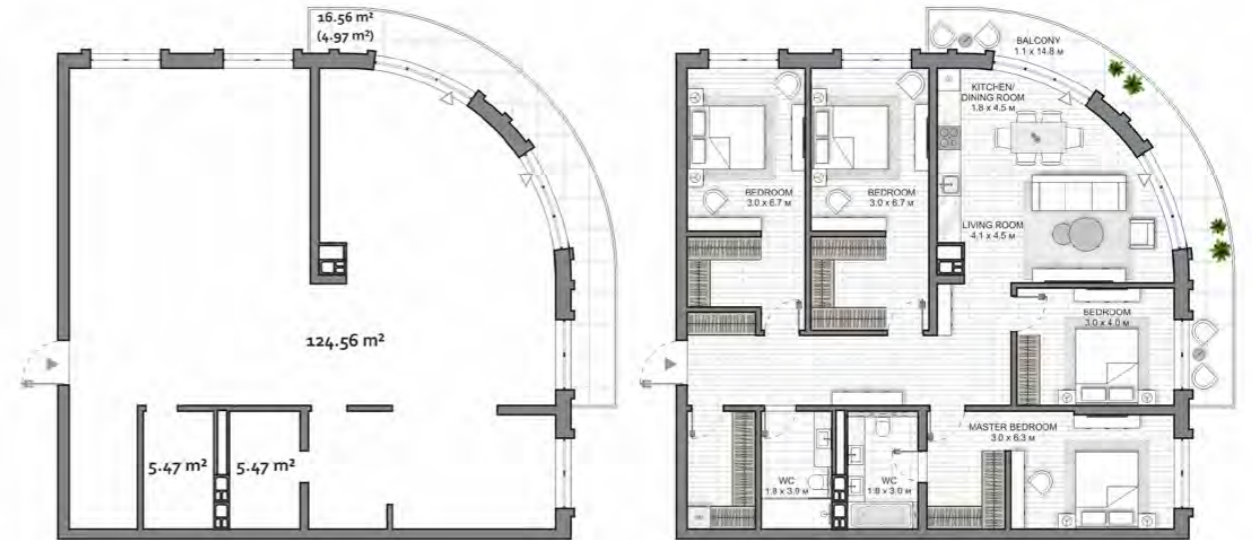
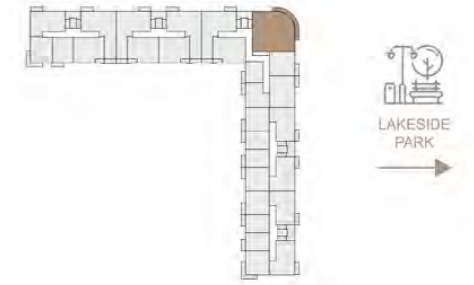
4 BR

Rosemont

4 BEDROOM TYPE A

APARTMENT AREA.....125.97 m² - 135.50 m²
 BALCONY AREA.....12.55 (3.77 m²) - 21.39 (6.42 m²)
 NET AREA.....135.18 m² - 140.47 m²

KEY PLAN 2-10 FLOORS



Disclaimer

1. All room dimensions are in metric and measured to structural elements and exclude wall finishes and construction tolerances.
2. All dimensions have been provided by our consultant architects.
3. All materials, dimensions, features and amenities are approximate at the time of printing.
4. Actual area may vary from stated area and unit direction may vary from unit to unit. Drawings not to scale. The developer reserves the right to make revisions to the floor plans and any features, materials, dimensions, drawings and amenities mentioned in this brochure without notice.

Disclaimer

1. All room dimensions are in metric and measured to structural elements and exclude wall finishes and construction tolerances.
2. All dimensions have been provided by our consultant architects.
3. All materials, dimensions, features and amenities are approximate at the time of printing.
4. Actual area may vary from stated area and unit direction may vary from unit to unit. Drawings not to scale. The developer reserves the right to make revisions to the floor plans and any features, materials, dimensions, drawings and amenities mentioned in this brochure without notice.



Rosemont

NV NORTH
WATERFRONT

NORTHWATERFRONT.BY



International number: +375 17 311-6888

Toll-free number: 8-801-100-3888

North Waterfront Sales Center,

Sverdlova str. 11, Minsk

Tsvirko str. 78, Minsk