

KAYA 2



NW NORTH WATERFRONT



North Waterfront

An exciting new destination for Belarus

The North Waterfront development is a bold new vision for a waterfront community in the heart of the capital that looks to the future whilst drawing inspiration from the neighborhood's rich history.

We have diverted the status quo towards prioritizing residents' well-being and experiences, focusing on the importance of quality amenities and resident's lifestyles by bringing the most incredible designers and architects to deliver world-class communities.

35
mins
From the
Airport

25
mins
From the
City Center

1
mins
From the
Ring Road

15
mins
From the
National Library

30
mins
From the
Railway Station

10
mins
From the
Sports Palace





Lakeside park

Neighbourhood square

Tsna lake

Kindergarten

Lara

Elora

Kaya 2

Supermarket
multi-level car park

Kaya 1

Alta

Aria

Eden

Forest Park
Green Trails



Exhibition Center



Parks



Ice Rink



Schools



Kid's Play Areas



Dog Parks



Cycling Track



Kindergartens



IT University



Supermarkets



Fishing Pier



Medical Centers



Lakeside Park

Residents of North Waterfront will be able to enjoy the modern and healthy environment created by the Lakeside Park.


The park offers a wonderful atmosphere perfect for relaxing and socializing amidst a captivating blend of natural beauty and immersive attractions.



Green Parks



Art SCULPTURES



Amphitheater



Sports Areas



Cycling Track



Logging Trail



Barbecue Areas



Picnic Areas



Fishing Pier



Urban Beach



Kid's Play Area



Cafes



Neighbourhood Square

Redefining lifestyle with an open park catering to the neighborhood, with its bespoke details, curated retail boutiques and avant-garde dining experiences.

This pedestrian friendly space located in the neighboring first phase of construction will also become a space for entertainment and special events.



Retail



Restaurants &
Cafes



Outdoor Events



Ice Rink



Art Sculptures



Park



Kid's Play Area



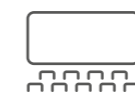
Picnic Areas



Residential Club

North Waterfront provides a unique experience that combines the benefits of neighborhood living with exclusive amenities and services.

The Residential club, conveniently situated within a walking distance, offers elegantly styled spaces exclusive to residents, enriching contemporary living with comfort and effortless access to premium amenities.



Cinema



Games Area



Gym



Meeting Rooms



Co-working Area



Event Room



Children's Place



Cafe



Forest Park

Lush green spine with walkways, cycling trail and playgrounds for children are characteristic to this phase of North Waterfront.

A Forest Park has been integrated into the development, by designing usable spaces into the existing landscape. This park blends well into the harmonious outdoor spaces that make this neighborhood more green.



Cycling Track



Green Trails



Play Areas



KAYA 2

1
1-39

KAYA 2



KAYA 2

Surrounded by greenery and picturesque landscapes of Forest Park, KAYA 2 provides a peaceful and relaxing lifestyle. The thoughtful placement of the building maximizes residents' enjoyment of the stunning views of promenade and private courtyard-park, fostering a harmonious connection with nature.

Diverse wellness, entertainment, and leisure choices are all within easy reach: a kindergarten, school, supermarket, lively Neighborhood Square, cafes and restaurants.

Meet your dreams of a perfect home with the thoughtful ergonomics of life at KAYA 2!



INSPIRED BY
NATURE



Eden

Aria

Forest Park

Alta

Kaya 1

Kaya 2

Elora

Supermarket & car park

Lara

Kindergarten



KAYA 2

ARTS CHI WING LO



Interiors

Aesthetic and functional, every detail at KAYA 2 has found its way into the interiors. Relax and immerse yourself in the beauty of your well-lit lobbies with designed furniture, books and interior decorations. Take pleasure in the charm of your brightly illuminated, generously sized apartment. Highlighting quality plumbing, integrated closets, and a fully equipped kitchen, the blend of modern design and practicality transforms your home into a center of efficiency and elegance.

- designer lobbies with panoramic glazing
- elegantly designed hallways
- dedicated storage for strollers and pet paw-washing facilities
- exquisite interior finishes
- modern furniture and quality plumbing
- fully equipped kitchen

KAYA 2

STUDIO TYPE A

APARTMENT AREA 41.57 m² - 41.72 m²
 BALCONY AREA 2.96(2.07 m²) - 4.51(1.35 m²)
 NET AREA 42.92 m² - 43.79 m²

KEY PLAN
FLOORS 2-10



Disclaimer

1. All room dimensions are in metric and measured to structural elements and exclude wall finishes and construction tolerances.
2. All dimensions have been provided by our consultant architects.
3. All materials, dimensions, features and amenities are approximate at the time of printing.
4. Actual area may vary from stated area and unit direction may vary from unit to unit. Drawings not to scale. The developer reserves the right to make revisions to the floor plans and any features, materials, dimensions, drawings and amenities mentioned in this brochure without notice.

1 BR

KAYA 2

1-BEDROOM TYPE A

APARTMENT AREA 48.09 m² - 48.95 m²
 BALCONY AREA 2.96(2.07 m²) - 4.51(1.35 m²)
 NET AREA 49.44 m² - 51.02 m²

KEY PLAN
FLOORS 1-10



Disclaimer

1. All room dimensions are in metric and measured to structural elements and exclude wall finishes and construction tolerances.
2. All dimensions have been provided by our consultant architects.
3. All materials, dimensions, features and amenities are approximate at the time of printing.
4. Actual area may vary from stated area and unit direction may vary from unit to unit. Drawings not to scale. The developer reserves the right to make revisions to the floor plans and any features, materials, dimensions, drawings and amenities mentioned in this brochure without notice.

KAYA 2

KEY PLAN FLOORS 1-10



1 BR

1-BEDROOM TYPE B

APARTMENT AREA.....48.73 m² - 49.71 m²
 BALCONY AREA.....2.96(2.07 m²) - 8.16(2.44 m²)
 NET AREA.....50.93 m² - 51.78 m²



KAYA 2

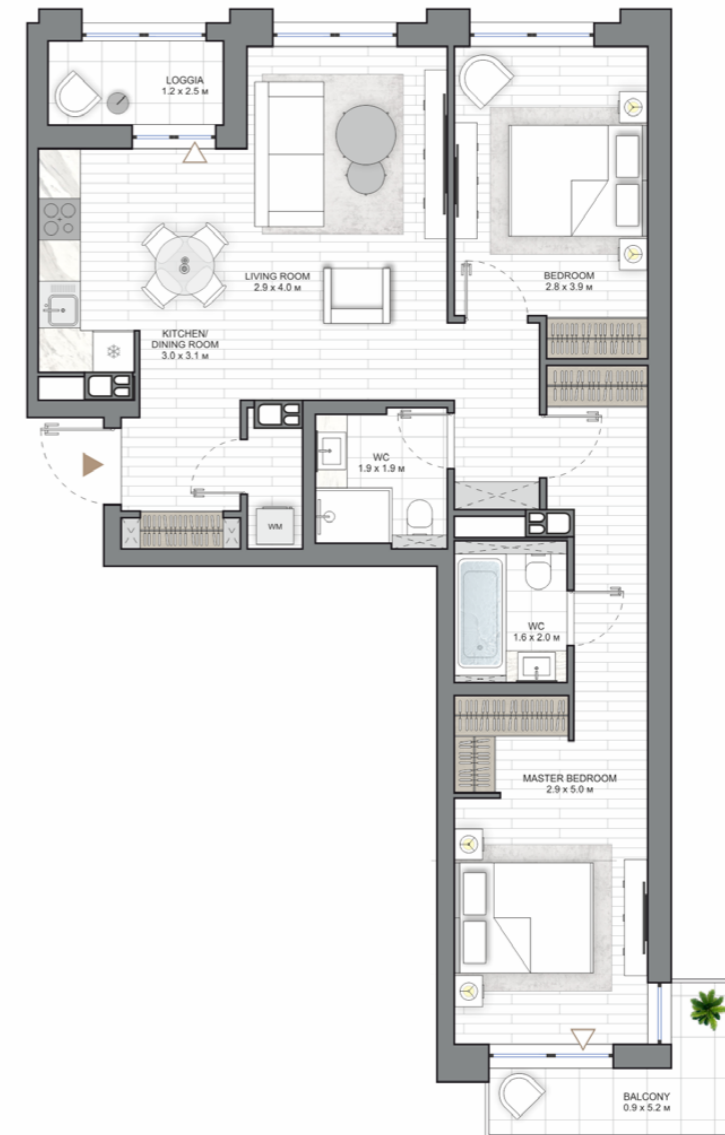
KEY PLAN FLOORS 2-6



2 BR

2-BEDROOM TYPE A

APARTMENT AREA.....66.65 m² - 68.62 m²
 BALCONY AREA.....7.67(3.49 m²) - 9.40(2.81 m²)
 NET AREA.....69.46 m² - 72.11 m²



Disclaimer

1. All room dimensions are in metric and measured to structural elements and exclude wall finishes and construction tolerances.
2. All dimensions have been provided by our consultant architects.
3. All materials, dimensions, features and amenities are approximate at the time of printing.
4. Actual area may vary from stated area and unit direction may vary from unit to unit. Drawings not to scale. The developer reserves the right to make revisions to the floor plans and any features, materials, dimensions, drawings and amenities mentioned in this brochure without notice.

Disclaimer

1. All room dimensions are in metric and measured to structural elements and exclude wall finishes and construction tolerances.
2. All dimensions have been provided by our consultant architects.
3. All materials, dimensions, features and amenities are approximate at the time of printing.
4. Actual area may vary from stated area and unit direction may vary from unit to unit. Drawings not to scale. The developer reserves the right to make revisions to the floor plans and any features, materials, dimensions, drawings and amenities mentioned in this brochure without notice.

KAYA 2

2-BEDROOM TYPE B

APARTMENT AREA.....65.70 m² - 71.20 m²
 BALCONY AREA.....2.99(2.09 m²) - 9.44(2.83 m²)
 NET AREA.....68.29 m² - 73.20 m²

KEY PLAN FLOORS 1-10



Disclaimer

1. All room dimensions are in metric and measured to structural elements and exclude wall finishes and construction tolerances.
2. All dimensions have been provided by our consultant architects.
3. All materials, dimensions, features and amenities are approximate at the time of printing.
4. Actual area may vary from stated area and unit direction may vary from unit to unit. Drawings not to scale. The developer reserves the right to make revisions to the floor plans and any features, materials, dimensions, drawings and amenities mentioned in this brochure without notice.

KAYA 2

2-BEDROOM TYPE C

APARTMENT AREA.....72.72 m² - 78.92 m²
 BALCONY AREA.....4.53(3.17 m²) - 6.05(1.81 m²)
 NET AREA.....75.89 m² - 82.77 m²

KEY PLAN FLOORS 1-10



Disclaimer

1. All room dimensions are in metric and measured to structural elements and exclude wall finishes and construction tolerances.
2. All dimensions have been provided by our consultant architects.
3. All materials, dimensions, features and amenities are approximate at the time of printing.
4. Actual area may vary from stated area and unit direction may vary from unit to unit. Drawings not to scale. The developer reserves the right to make revisions to the floor plans and any features, materials, dimensions, drawings and amenities mentioned in this brochure without notice.

KAYA 2

NORTHWATERFRONT.BY



International number: +375 17 311-6888

Toll-free number: 8-801-100-3888

North Waterfront Sales Center,
Sverdlova str. 11, Minsk

NVW NORTH
WATERFRONT