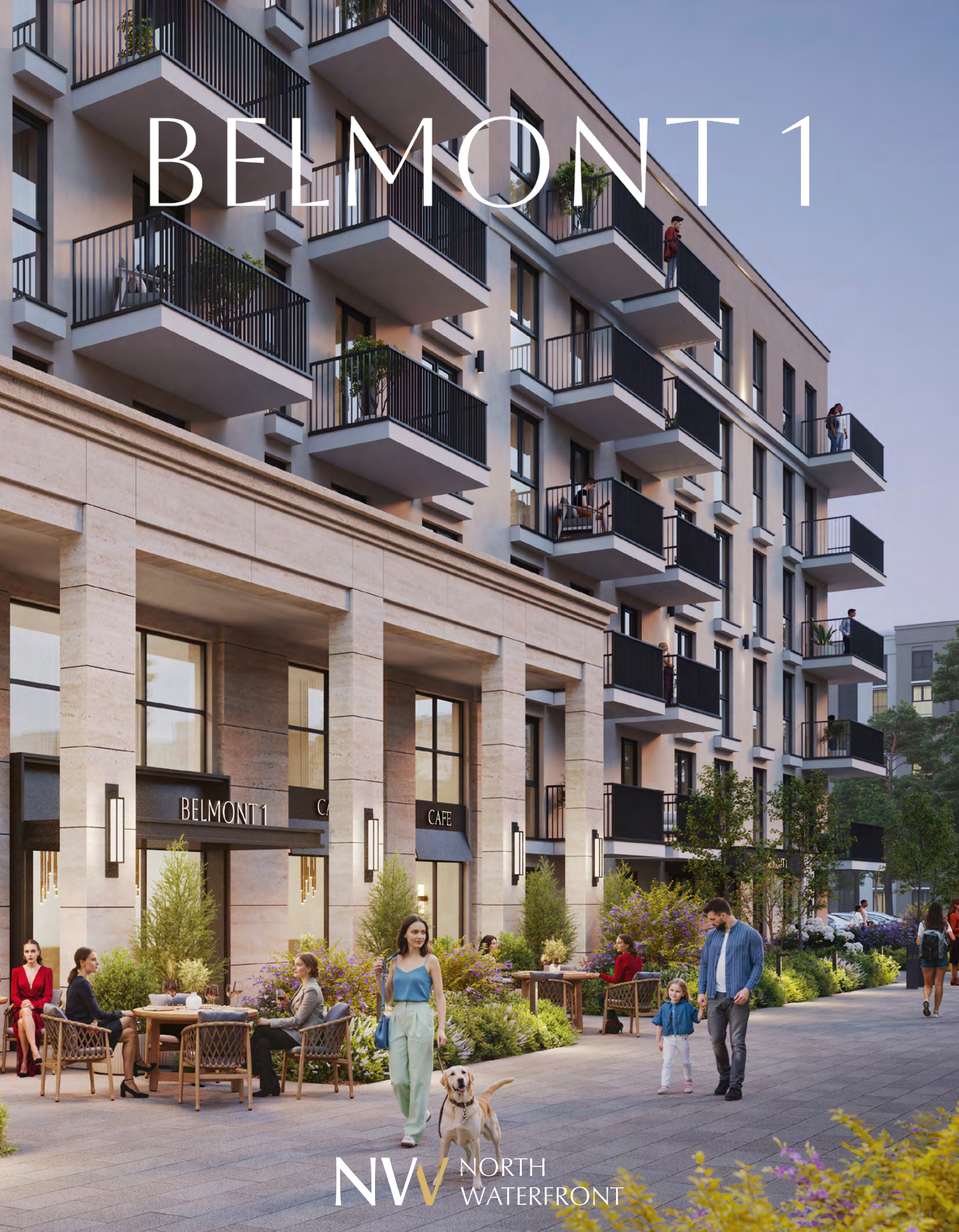


BELMONT 1



BELMONT 1

CAFE

NVW NORTH WATERFRONT



North Waterfront

An exciting new destination for Belarus

The North Waterfront development is a bold new vision for a waterfront community in the heart of the capital that looks to the future whilst drawing inspiration from the neighborhood's rich history.

We have diverted the status quo towards prioritizing residents' well-being and experiences, focusing on the importance of quality amenities and resident's lifestyles by bringing the most incredible designers and architects to deliver world-class communities.



35

mins
From the
Airport

25

mins
From the
City Center

1

mins
From the
Ring Road

15

mins
From the
National Library

30

mins
From the
Railway Station

10

mins
From the
Sports Palace





Exhibition Center



Parks



Ice Rink



Schools



Kid's Play Areas



Dog Parks



Cycling Track



Kindergartens



IT University



Supermarkets



Fishing Pier



Medical Centers

Lakeside Park

Residents of North Waterfront will be able to enjoy the modern and healthy environment created by the Lakeside Park.

The park offers a wonderful atmosphere perfect for relaxing and socializing amidst a captivating blend of natural beauty and immersive attractions.



Green Parks



Art SCULPTURES



Amphitheater



Sports Areas



Fishing Pier



Urban Beach



Cycling Track



Jogging Trail



Barbecue Areas



Picnic Areas



Kid's Play Area



Cafes





Neighbourhood Square

Redefining lifestyle with an open park catering to the neighborhood, with its bespoke details, curated retail boutiques and avant-garde dining experiences.

This pedestrian friendly space located in the neighboring district will also become a space for entertainment and special events.



Retail



Restaurants & Cafes



Outdoor Events



Ice Rink



Art Sculptures



Park



Kid's Play Area



Picnic Areas





Residential Club



North Waterfront provides a unique experience that combines the benefits of neighborhood living with exclusive amenities and services.

The Residential Club, conveniently situated within a walking distance, offers elegantly styled spaces exclusive to residents, enriching contemporary living with comfort and effortless access to premium amenities.



Cinema



Games Area



Gym



Meeting Rooms



Co-working Area



Event Room



Children's Place



Cafe



BELMONT 1





BELMONT 1

Nestled in the heart of the neighborhood, BELMONT 1 redefines modern living with its thoughtfully designed apartments and an array of exceptional amenities.

Vibrant lifestyle here offers a harmonious blend of nature, recreation, and convenience, making it the perfect place to live, grow, and thrive.



COMMUNITY CRAFTED FOR EVERY LIFESTYLE





Wellton

Rosemont

Car Park

Belmont 1

Oberon 1

Kindergarten

Car Park

Kindergarten

Forest Park

Car Park

Neighborhood square

Sales office

Lakeside Park



Interiors

Our approach balances aesthetic appeal with purposeful design, ensuring that every element enhances the daily lives of residents.

- designer lobbies with panoramic glazing
- elegantly designed hallways
- dedicated storage for strollers
- pet paw-washing facilities





CLASSIC ELEGANCE AND CONTEMPORARY DESIGN

BELMONT 1 apartments are crafted with meticulous attention to detail, emphasizing natural light, spatial efficiency, and a seamless connection between interiors and the surrounding community.

- exquisite interior finishes
- modern furniture and quality plumbing
- built-in kitchen



SERENE BEAUTY



NVW NORTH WATERFRONT

BELMONT 1

STUDIO
TYPE B

APARTMENT AREA 32.53 m² - 33.26 m²
BALCONY AREA 4.53 (1.36 m²) - 10.10 (3.03 m²)
NET AREA 33.89 m² - 35.87 m²

KEY PLAN 2-8 FLOORS



Disclaimer

1. All room dimensions are in metric and measured to structural elements and exclude wall finishes and construction tolerances.
2. All dimensions have been provided by our consultant architects.
3. All materials, dimensions, features and amenities are approximate at the time of printing.
4. Actual area may vary from stated area and unit direction may vary from unit to unit. Drawings not to scale. The developer reserves the right to make revisions to the floor plans and any features, materials, dimensions, drawings and amenities mentioned in this brochure without notice.



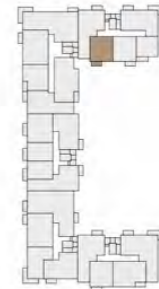
NVW NORTH WATERFRONT

BELMONT 1

1 BEDROOM
TYPE A

APARTMENT AREA 42.55 m² - 42.87 m²
BALCONY AREA 3.83 (1.15 m²) - 3.86 (1.16 m²)
NET AREA 42.64 m² - 43.80 m²

KEY PLAN 1-8 FLOORS



Disclaimer

1. All room dimensions are in metric and measured to structural elements and exclude wall finishes and construction tolerances.
2. All dimensions have been provided by our consultant architects.
3. All materials, dimensions, features and amenities are approximate at the time of printing.
4. Actual area may vary from stated area and unit direction may vary from unit to unit. Drawings not to scale. The developer reserves the right to make revisions to the floor plans and any features, materials, dimensions, drawings and amenities mentioned in this brochure without notice.



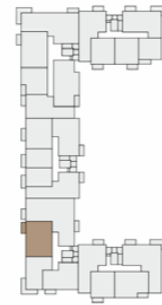
NW NORTH WATERFRONT

BELMONT 1

2 BEDROOM
TYPE E

APARTMENT AREA 62.81 m²
BALCONY AREA 3.83 (1.15 m²)
NET AREA 63.96 m²

KEY PLAN 2-6 FLOORS



NW NORTH WATERFRONT

BELMONT 1

2 BEDROOM
TYPE G

APARTMENT AREA 63.99 m² - 67.72 m²
BALCONY AREA 3.26 (0.98 m²) - 5.21 (1.56 m²)
NET AREA 65.14 m² - 68.50 m²

KEY PLAN 1-8 FLOORS



Disclaimer

1. All room dimensions are in metric and measured to structural elements and exclude wall finishes and construction tolerances.
2. All dimensions have been provided by our consultant architects.
3. All materials, dimensions, features and amenities are approximate at the time of printing.
4. Actual area may vary from stated area and unit direction may vary from unit to unit. Drawings not to scale. The developer reserves the right to make revisions to the floor plans and any features, materials, dimensions, drawings and amenities mentioned in this brochure without notice.



Disclaimer

1. All room dimensions are in metric and measured to structural elements and exclude wall finishes and construction tolerances.
2. All dimensions have been provided by our consultant architects.
3. All materials, dimensions, features and amenities are approximate at the time of printing.
4. Actual area may vary from stated area and unit direction may vary from unit to unit. Drawings not to scale. The developer reserves the right to make revisions to the floor plans and any features, materials, dimensions, drawings and amenities mentioned in this brochure without notice.



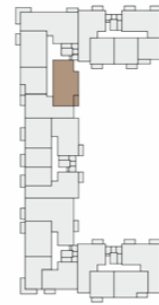
NVW NORTH WATERFRONT

BELMONT 1

3 BEDROOM
TYPE A

APARTMENT AREA 72.67 m²
BALCONY AREA 4.43 (1.33 m²)
NET AREA 74.00 m²

KEY PLAN 2-8 FLOORS



4 BR

NVW NORTH WATERFRONT

BELMONT 1

4 BEDROOM
TYPE A

APARTMENT AREA 108.22 m²
BALCONY AREA 7.66 (2.30 m²)
NET AREA 110.52 m²

KEY PLAN 2-6 FLOORS



Disclaimer

1. All room dimensions are in metric and measured to structural elements and exclude wall finishes and construction tolerances.
2. All dimensions have been provided by our consultant architects.
3. All materials, dimensions, features and amenities are approximate at the time of printing.
4. Actual area may vary from stated area and unit direction may vary from unit to unit. Drawings not to scale. The developer reserves the right to make revisions to the floor plans and any features, materials, dimensions, drawings and amenities mentioned in this brochure without notice.

Disclaimer

1. All room dimensions are in metric and measured to structural elements and exclude wall finishes and construction tolerances.
2. All dimensions have been provided by our consultant architects.
3. All materials, dimensions, features and amenities are approximate at the time of printing.
4. Actual area may vary from stated area and unit direction may vary from unit to unit. Drawings not to scale. The developer reserves the right to make revisions to the floor plans and any features, materials, dimensions, drawings and amenities mentioned in this brochure without notice.

BELMONT 1



NV NORTH WATERFRONT

NORTHWATERFRONT.BY



International number: +375 17 311-6888

Toll-free number: 8-801-100-3888

North Waterfront Sales Center,

Sverdlova str. 11, Minsk

Tsvirko str. 78, Minsk