

WELLTON



NW NORTH WATERFRONT

North Waterfront

An exciting new destination for Belarus

The North Waterfront development is a bold new vision for a waterfront community in the heart of the capital that looks to the future whilst drawing inspiration from the neighborhood's rich history.

We have diverted the status quo towards prioritizing residents' well-being and experiences, focusing on the importance of quality amenities and resident's lifestyles by bringing the most incredible designers and architects to deliver world-class communities.



35

mins
From the
Airport

25

mins
From the
City Center

1

mins
From the
Ring Road

15

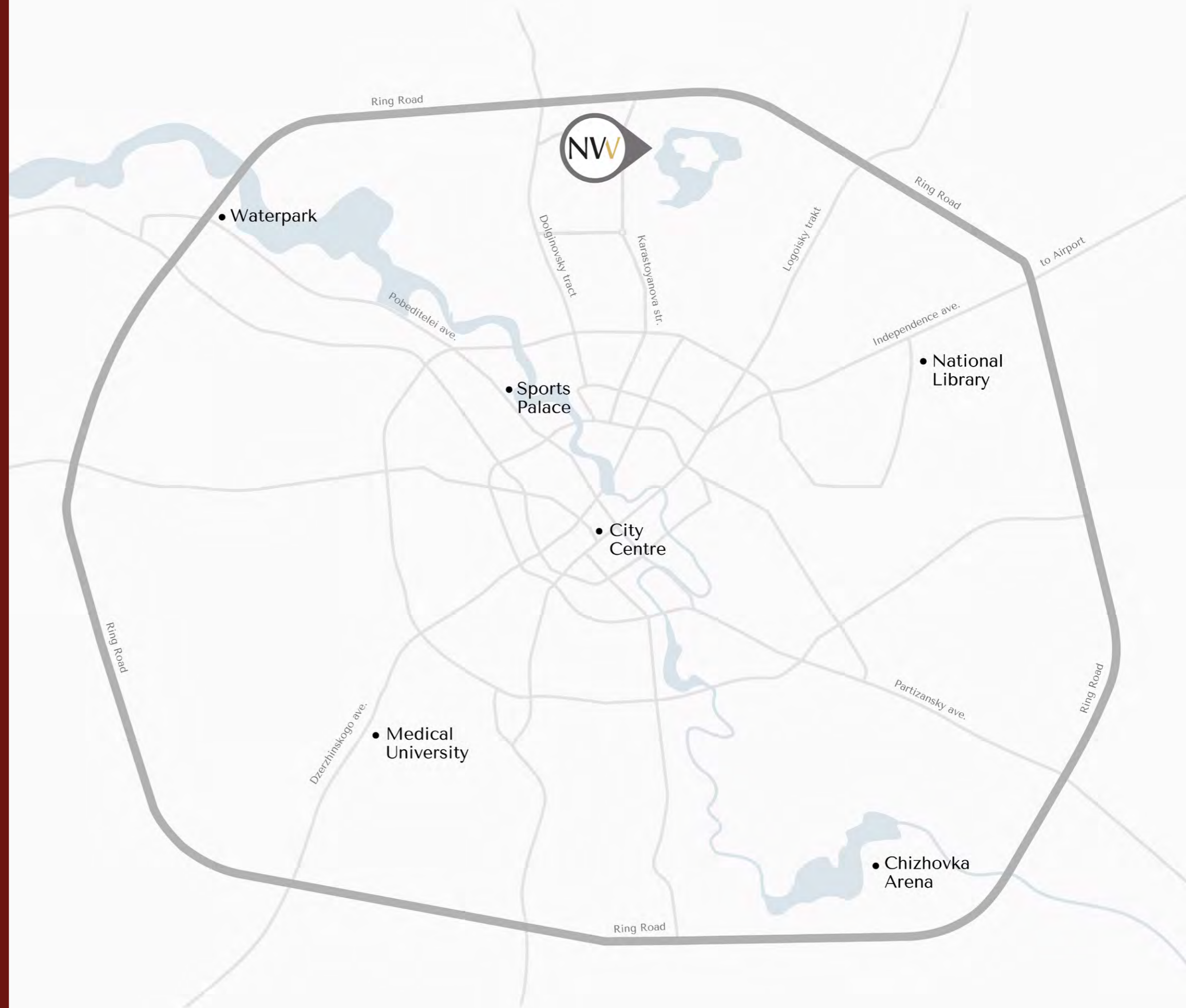
mins
From the
National Library

30

mins
From the
Railway Station

10

mins
From the
Sports Palace





- 
Exhibition Center
- 
Parks
- 
Ice Rink
- 
Schools
- 
Kid's Play Areas
- 
Dog Parks
- 
Cycling Track
- 
Kindergartens
- 
IT University
- 
Supermarkets
- 
Fishing Pier
- 
Medical Centers

Lakeside Park

Residents of North Waterfront will be able to enjoy the modern and healthy environment created by the Lakeside Park.

The park offers a wonderful atmosphere perfect for relaxing and socializing amidst a captivating blend of natural beauty and immersive attractions.



Green Parks



Art Sculptures



Amphitheater



Sports Areas



Fishing Pier



Urban Beach



Cycling Track



Jogging Trail



Barbecue Areas



Picnic Areas



Kid's Play Area



Cafes



Neighbourhood Square

Redefining lifestyle with an open park catering to the neighborhood, with its bespoke details, curated retail boutiques and avant-garde dining experiences.

This pedestrian friendly space located in the neighboring district will also become a space for entertainment and special events.



Retail



Restaurants & Cafes



Outdoor Events



Ice Rink



Art Sculptures



Park



Kid's Play Area



Picnic Areas

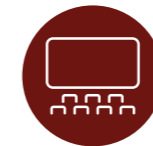




Residential Club

North Waterfront provides a unique experience that combines the benefits of neighborhood living with exclusive amenities and services.

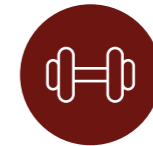
The Residential Club, conveniently situated within a walking distance, offers elegantly styled spaces exclusive to residents, enriching contemporary living with comfort and effortless access to premium amenities.



Cinema



Games Area



Gym



Meeting Rooms



Co-working Area



Event Room



Children's Place



Cafe

WELLTON





WELLTON

Create your dream life at WELLTON. It showcases a striking collection of modern apartments, offering sweeping park views and modern chill zones at an extensive private courtyard.

Experience life at its best in the Downtown Neighborhood, where modern design blends with lush greenery, diverse retail, and top class amenities. Find in the nearby vicinity a kindergarten, a supermarket, car-parks, cafes and pocket parks with its serene landscape.

Step into the world of elevated living with WELLTON.





ELEVATED LIVING



Car Park

Kindergarten

Car Park

Wellton

MODERN SOPHISTICATION



Interiors

WELLTON with sleek design, modern furniture and large windows, redefines urban elegance by merging aesthetic appeal with everyday practicality.

- Designer lobbies with panoramic glazing
- Elegantly designed hallways
- Dedicated storage for strollers and pet paw-washing facilities

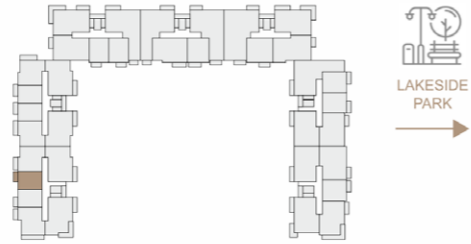


WELLTON

STUDIO TYPE A

APARTMENT AREA28.61 m² - 36.93 m²
 BALCONY AREA3.39 (1.02 m²) - 4.46 (1.34 m²)
 NET AREA29.35 m² - 38.15 m²

KEY PLAN 2-10 FLOORS



Disclaimer

1. All room dimensions are in metric and measured to structural elements and exclude wall finishes and construction tolerances.
2. All dimensions have been provided by our consultant architects.
3. All materials, dimensions, features and amenities are approximate at the time of printing.
4. Actual area may vary from stated area and unit direction may vary from unit to unit. Drawings not to scale. The developer reserves the right to make revisions to the floor plans and any features, materials, dimensions, drawings and amenities mentioned in this brochure without notice.

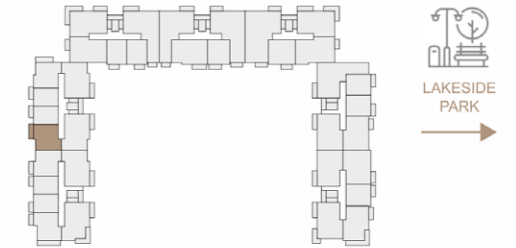
1 BR

WELLTON

1 BEDROOM TYPE A

APARTMENT AREA42.85 m² - 43.48 m²
 BALCONY AREA4.43 (1.33 m²) - 5.52 (1.66 m²)
 NET AREA43.47 m² - 44.50 m²

KEY PLAN 2-10 FLOORS

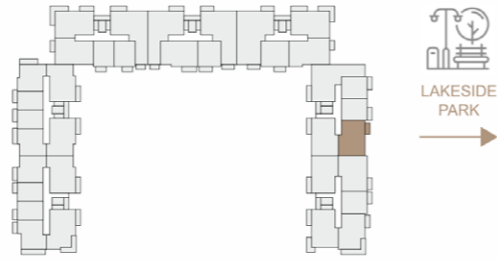


Disclaimer

1. All room dimensions are in metric and measured to structural elements and exclude wall finishes and construction tolerances.
2. All dimensions have been provided by our consultant architects.
3. All materials, dimensions, features and amenities are approximate at the time of printing.
4. Actual area may vary from stated area and unit direction may vary from unit to unit. Drawings not to scale. The developer reserves the right to make revisions to the floor plans and any features, materials, dimensions, drawings and amenities mentioned in this brochure without notice.

WELLTON

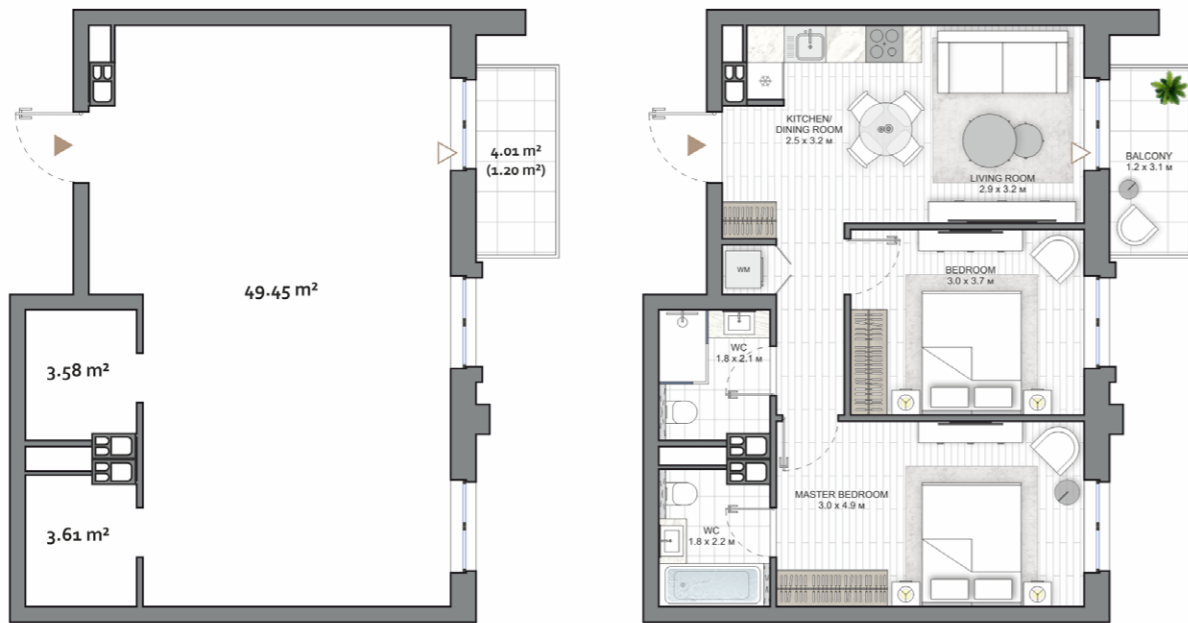
KEY PLAN 1-7 FLOORS



2 BR

2 BEDROOM TYPE A

APARTMENT AREA56.63 m² - 62.26 m²
 BALCONY AREA.....4.01 (1.20 m²) - 9.00 (2.70 m²)
 NET AREA.....57.83 m² - 63.47 m²

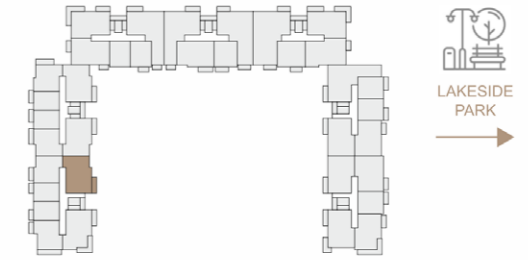


Disclaimer

1. All room dimensions are in metric and measured to structural elements and exclude wall finishes and construction tolerances.
2. All dimensions have been provided by our consultant architects.
3. All materials, dimensions, features and amenities are approximate at the time of printing.
4. Actual area may vary from stated area and unit direction may vary from unit to unit. Drawings not to scale. The developer reserves the right to make revisions to the floor plans and any features, materials, dimensions, drawings and amenities mentioned in this brochure without notice.

WELLTON

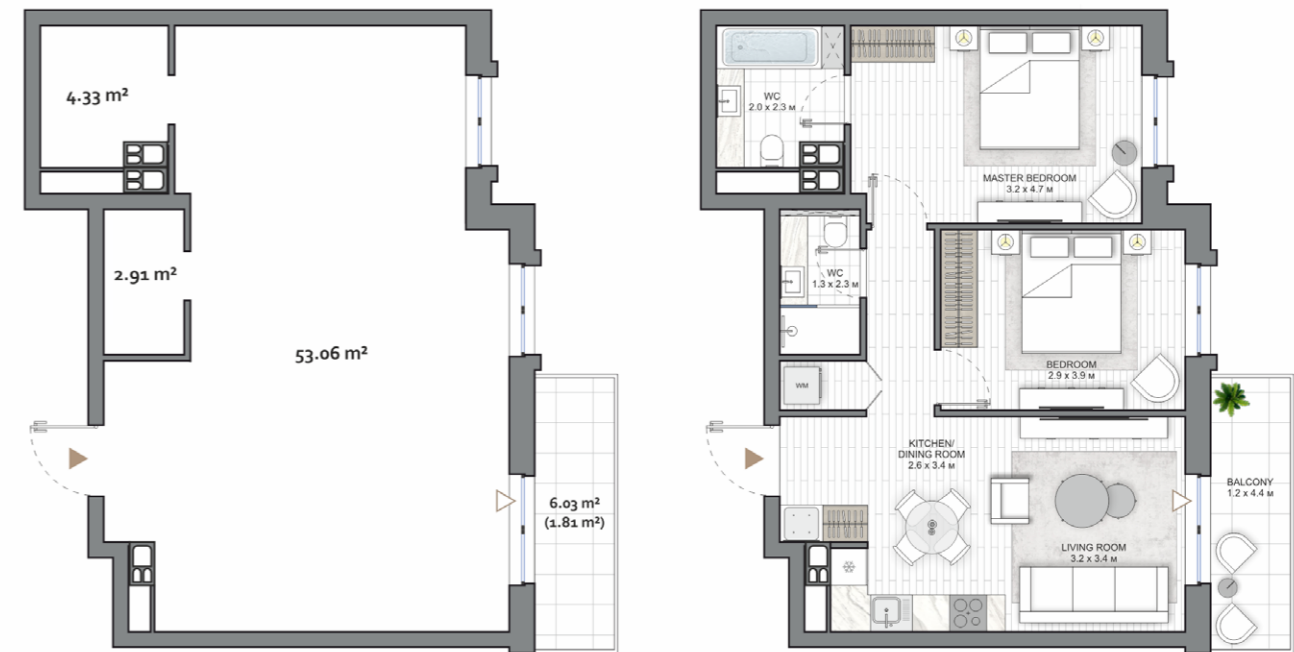
KEY PLAN 2-10 FLOORS



2 BR

2 BEDROOM TYPE E

APARTMENT AREA60.30 m² - 61.28 m²
 BALCONY AREA.....6.03 (1.81 m²) - 8.63 (2.59 m²)
 NET AREA.....62.11 m² - 63.18 m²

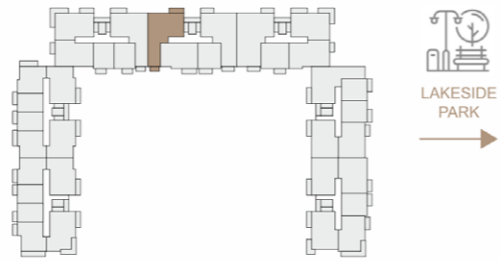


Disclaimer

1. All room dimensions are in metric and measured to structural elements and exclude wall finishes and construction tolerances.
2. All dimensions have been provided by our consultant architects.
3. All materials, dimensions, features and amenities are approximate at the time of printing.
4. Actual area may vary from stated area and unit direction may vary from unit to unit. Drawings not to scale. The developer reserves the right to make revisions to the floor plans and any features, materials, dimensions, drawings and amenities mentioned in this brochure without notice.

WELLTON

KEY PLAN 2-9 FLOORS



3 BR

3 BEDROOM TYPE A

APARTMENT AREA80.02 m² - 86.35 m²
 BALCONY AREA.....6.03 (1.81 m²) - 12.07 (3.62 m²)
 NET AREA.....82.77 m² - 89.18 m²

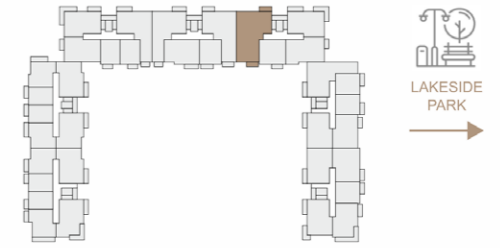


Disclaimer

1. All room dimensions are in metric and measured to structural elements and exclude wall finishes and construction tolerances.
2. All dimensions have been provided by our consultant architects.
3. All materials, dimensions, features and amenities are approximate at the time of printing.
4. Actual area may vary from stated area and unit direction may vary from unit to unit. Drawings not to scale. The developer reserves the right to make revisions to the floor plans and any features, materials, dimensions, drawings and amenities mentioned in this brochure without notice.

WELLTON

KEY PLAN 2-9 FLOORS



4 BR

4 BEDROOM TYPE A

APARTMENT AREA104.44 m² - 105.68 m²
 BALCONY AREA.....4.71 (1.41 m²) - 9.54 (2.86 m²)
 NET AREA.....107.09 m² - 107.42 m²



Disclaimer

1. All room dimensions are in metric and measured to structural elements and exclude wall finishes and construction tolerances.
2. All dimensions have been provided by our consultant architects.
3. All materials, dimensions, features and amenities are approximate at the time of printing.
4. Actual area may vary from stated area and unit direction may vary from unit to unit. Drawings not to scale. The developer reserves the right to make revisions to the floor plans and any features, materials, dimensions, drawings and amenities mentioned in this brochure without notice.

WELLTON

NORTHWATERFRONT.BY



International number: +375 17 311-6888

Toll-free number: 8-801-100-3888

North Waterfront Sales Center,

Sverdlova str. 11, Minsk

Tsvirko str. 78, Minsk

NVW NORTH
WATERFRONT