

# ALTA



NW NORTH  
WATERFRONT





# NORTH WATERFRONT

## AN EXCITING NEW DESTINATION FOR BELARUS

The North Waterfront development is a bold new vision for a waterfront community in the heart of the capital that looks to the future whilst drawing inspiration from the neighborhood's rich history.

Mr. Alabbar has diverted the status quo towards prioritizing residents' well-being and experiences, focusing on the importance of quality amenities and resident's lifestyles by bringing the most incredible designers and architects to deliver world-class communities.



35

mins  
From the  
Airport

25

mins  
From the  
City Center

1

mins  
From the  
Ring Road

15

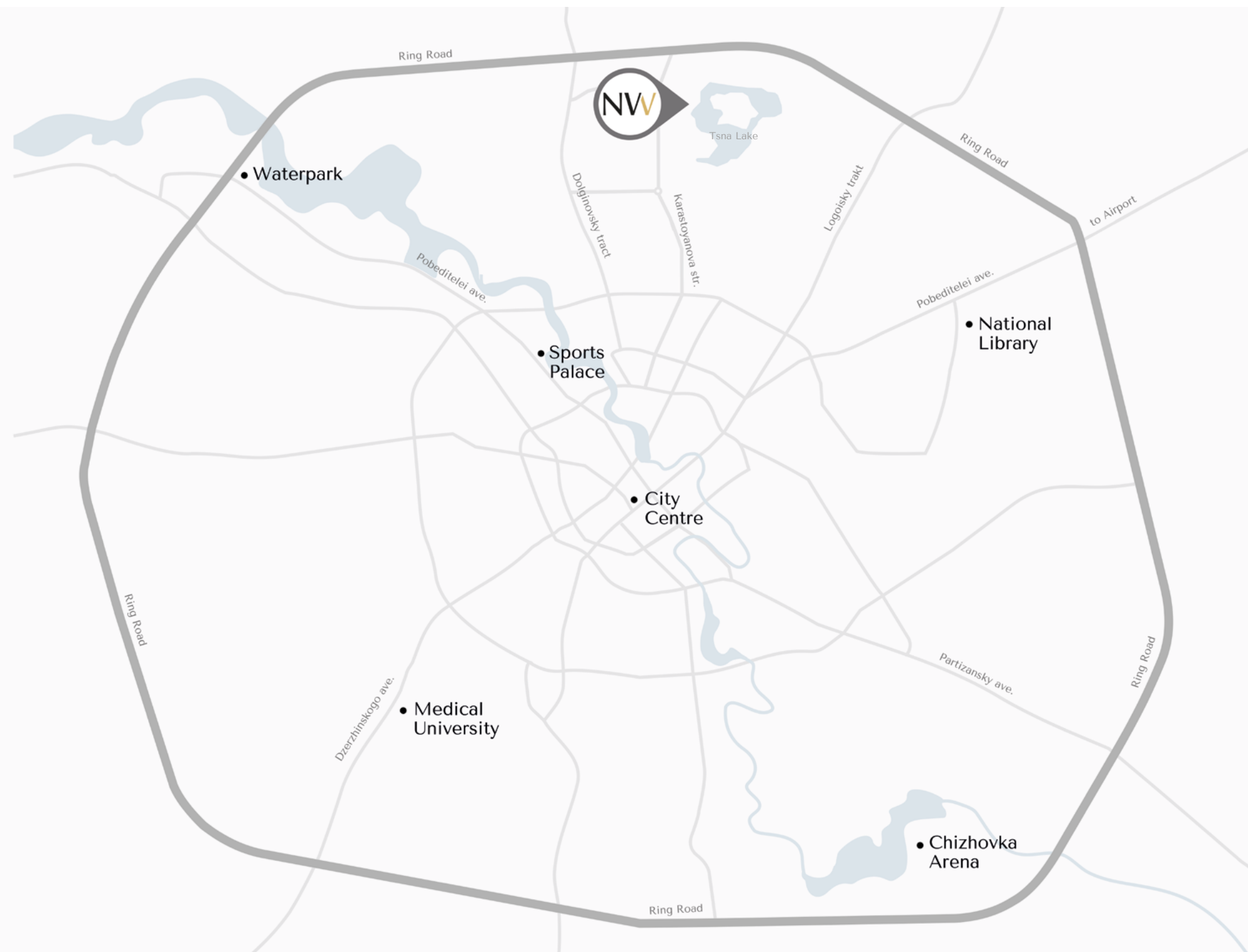
mins  
From the  
National Library

30

mins  
From the  
Railway Station

10

mins  
From the  
Sports Palace



4

NORTH WATERFRONT | ALTA

5

NORTH WATERFRONT | ALTA



# COMMUNITY FACILITIES



LAKESIDE PARK

TSNA LAKE

NEIGHBOURHOOD SQUARE

KINDERGARTEN

SUPERMARKET AND CAR PARK

ALTA

FOREST PARK AND GREEN TRAILS



Exhibition  
Center



Parks



Ice Rink



Schools



Kid's Play Areas



Dog Parks



Cycling Track



Kindergartens



IT University



Supermarkets



Fishing Pier



Medical  
Centers

















# LAKESIDE PARK

Residents of North Waterfront will be able to enjoy the modern and healthy environment created by the Lakeside Park.

The park offers a wonderful atmosphere perfect for relaxing and socializing amidst a captivating blend of natural beauty and immersive attractions.

- |  |  |  |   |
|--|--|--|---|
| <br>Green Parks     | <br>Art SCULPTURES  | <br>Amphitheater      | <br>Sports Areas   |
| <br>Cycling Track | <br>Jogging Trail | <br>Barbecue Areas  | <br>Picnic Areas |
| <br>Fishing Pier  | <br>Urban Beach   | <br>Kid's Play Area | <br>Cafes        |





# NEIGHBOURHOOD SQUARE

Redefining lifestyle with an open park catering to the neighborhood, with its bespoke details, curated retail boutiques and avant-garde dining experiences.

This pedestrian friendly space located in the neighboring first phase of construction will also become a space for entertainment and special events.



Retail



Restaurants & Cafes



Outdoor Events



Ice Rink



Art Sculptures



Park



Kid's Play Area



Picnic Areas

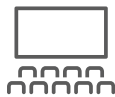




# RESIDENTIAL CLUB

North Waterfront provides a unique experience that combines the benefits of neighborhood living with exclusive amenities and services.

The Residential club, conveniently situated within a walking distance, offers elegantly styled spaces exclusive to residents, enriching contemporary living with comfort and effortless access to premium amenities.



Cinema



Games Area



Gym



Meeting Rooms



Co-working Area



Event Room



Children's Place



Cafe





# FOREST PARK AND GREEN TRAILS

Lush green spine with walkways, cycling trail and playgrounds for children are characteristic to this phase of North Waterfront.

A Forest Park has been integrated into the development, by designing usable spaces into the existing landscape. This park blends well into the harmonious outdoor spaces that make this neighborhood more green.



Cycling Track



Green Trails



Play Areas









# ALTA

Experience unmatched living in the modern home situated amidst the beauty of nature. Enjoy privacy from the bustling world outside and create happy and joyful moments with the whole family.

The serene essence of living is elevated by the verdant Forest Park situated in front of ALTA. Walking around the neighborhood, residents will daily enjoy scenic and picturesque views.

The neighborhood also features a kindergarten, other amenity retail such as supermarkets, cafes, and is at close proximity to the lively Neighborhood Square and Lakeside Park.





A VIBRANT LIFE  
AT YOUR DOORSTEP



PHASE 2











## INTERIOR

Cozy and well-lit lobbies keep the general design concept, enhancing the beauty of every day of life.

- Designer lobbies with panoramic glazing & hotel-like styling
- Elegantly designed hallways
- Dedicated storage for strollers and pet paw-washing facilities

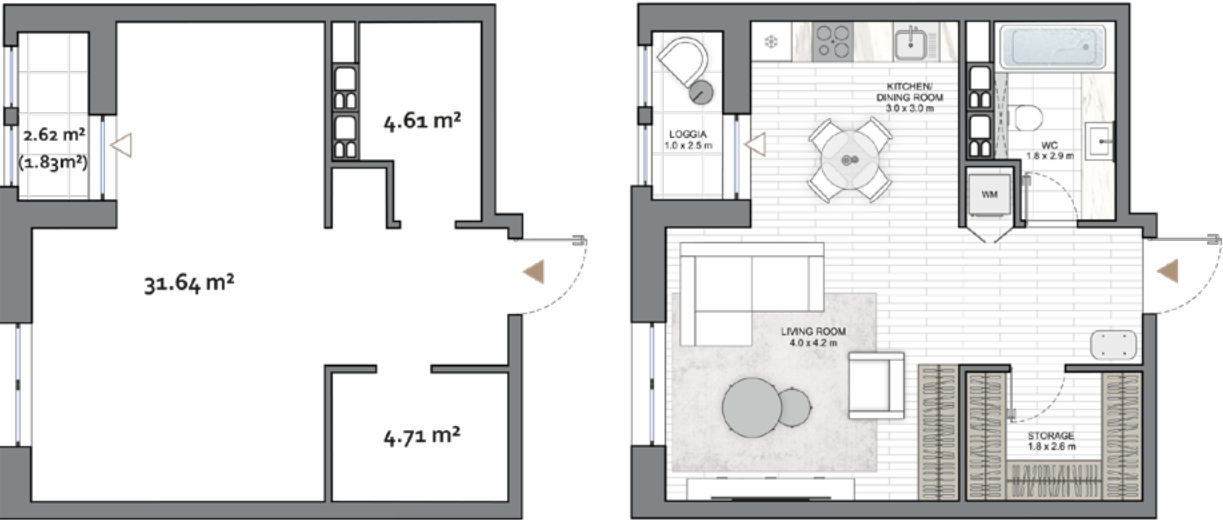
ALTA's well-appointed green territory and a tranquil car-free courtyard-park will be valued not only by adults, but also by young residents.





STUDIO  
TYPE B

APARTMENT AREA.....35.97 m<sup>2</sup> - 40.96 m<sup>2</sup>  
BALCONY AREA.....2.62 (1.83 m<sup>2</sup>)  
NET AREA.....37.80 m<sup>2</sup> - 42.79 m<sup>2</sup>



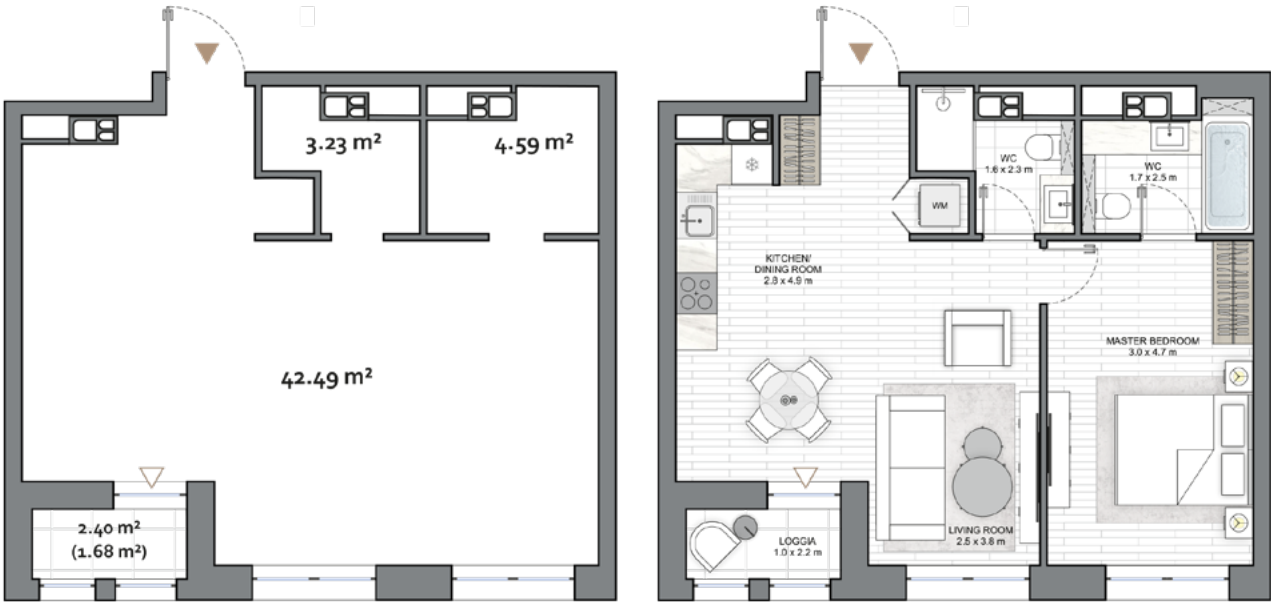
Disclaimer

1. All room dimensions are in metric and measured to structural elements and exclude wall finishes and construction tolerances.
2. All dimensions have been provided by our consultant architects.
3. All materials, dimensions, features and amenities are approximate at the time of printing.
4. Actual area may vary from stated area and unit direction may vary from unit to unit. Drawings not to scale. The developer reserves the right to make revisions to the floor plans and any features, materials, dimensions, drawings and amenities mentioned in this brochure without notice.

1 BR

1 BEDROOM  
TYPE A

APARTMENT AREA..... 49.72 m<sup>2</sup> - 50.31 m<sup>2</sup>  
BALCONY AREA..... 2.38 (1.67 m<sup>2</sup>) - 14.35 (5.22 m<sup>2</sup>)  
NET AREA.....51.37 m<sup>2</sup> - 55.50 m<sup>2</sup>



Disclaimer

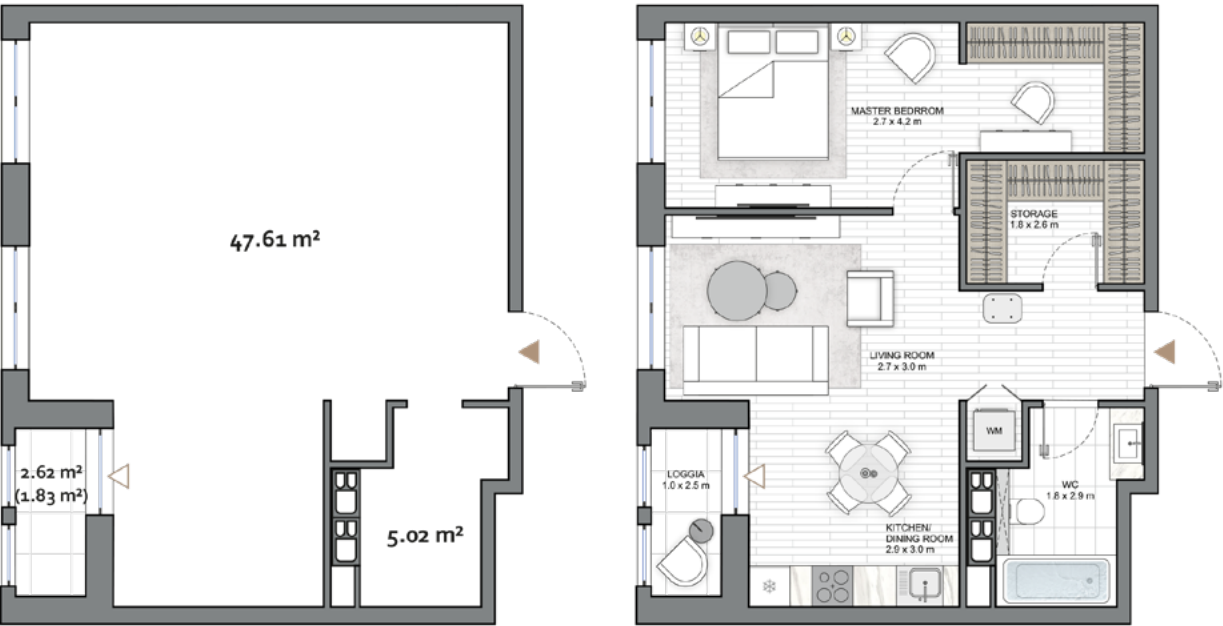
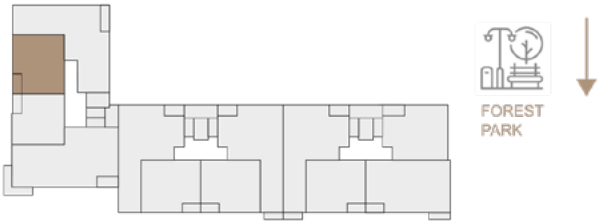
1. All room dimensions are in metric and measured to structural elements and exclude wall finishes and construction tolerances.
2. All dimensions have been provided by our consultant architects.
3. All materials, dimensions, features and amenities are approximate at the time of printing.
4. Actual area may vary from stated area and unit direction may vary from unit to unit. Drawings not to scale. The developer reserves the right to make revisions to the floor plans and any features, materials, dimensions, drawings and amenities mentioned in this brochure without notice.



1 BEDROOM  
TYPE B

APARTMENT AREA..... 52.63 m<sup>2</sup>  
BALCONY AREA..... 2.62 (1.83 m<sup>2</sup>)  
NET AREA..... 54.46 m<sup>2</sup>

KEY PLAN 2-9 FLOORS



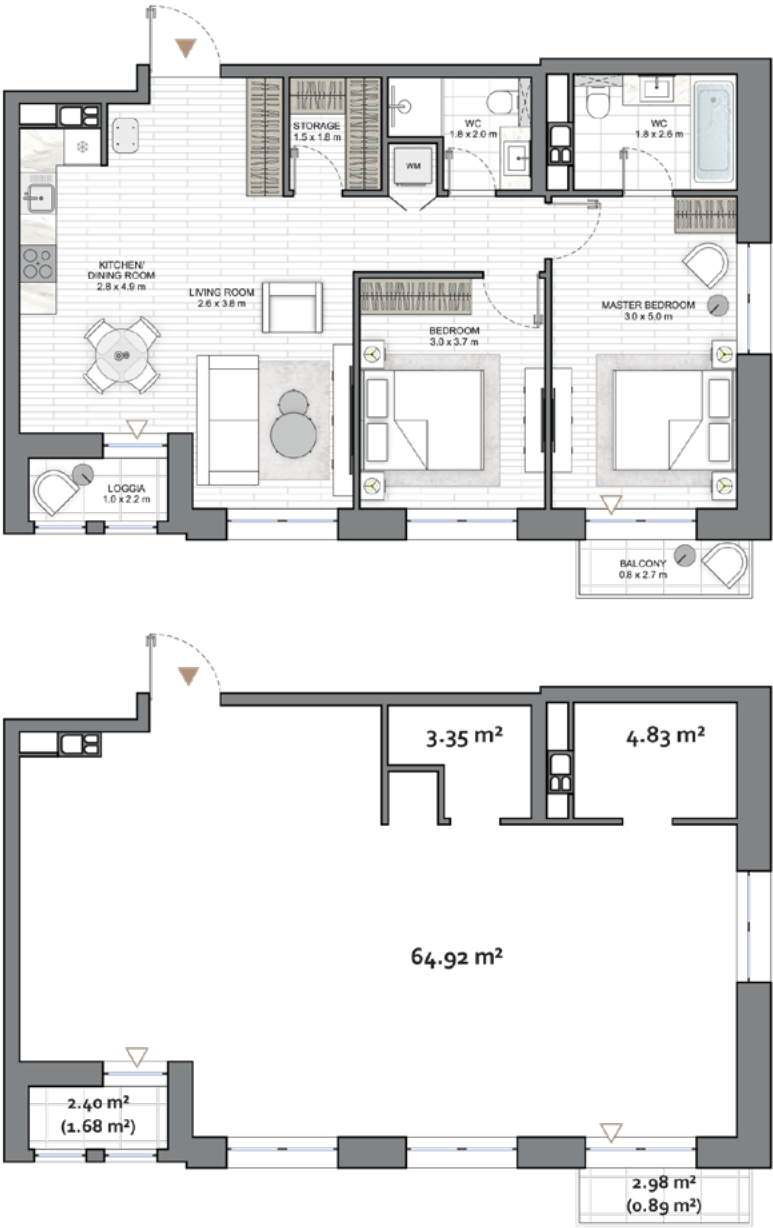
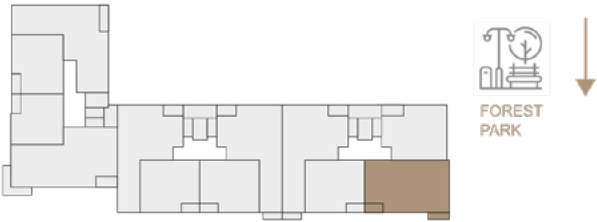
Disclaimer

1. All room dimensions are in metric and measured to structural elements and exclude wall finishes and construction tolerances.
2. All dimensions have been provided by our consultant architects.
3. All materials, dimensions, features and amenities are approximate at the time of printing.
4. Actual area may vary from stated area and unit direction may vary from unit to unit. Drawings not to scale. The developer reserves the right to make revisions to the floor plans and any features, materials, dimensions, drawings and amenities mentioned in this brochure without notice.

2 BEDROOM  
TYPE A

APARTMENT AREA..... 72.97 m<sup>2</sup> - 73.10 m<sup>2</sup>  
BALCONY AREA..... 5.38 (2.57 m<sup>2</sup>) - 21.65 (7.41 m<sup>2</sup>)  
NET AREA..... 75.67 m<sup>2</sup> - 80.38 m<sup>2</sup>

KEY PLAN 1-10 FLOORS



Disclaimer

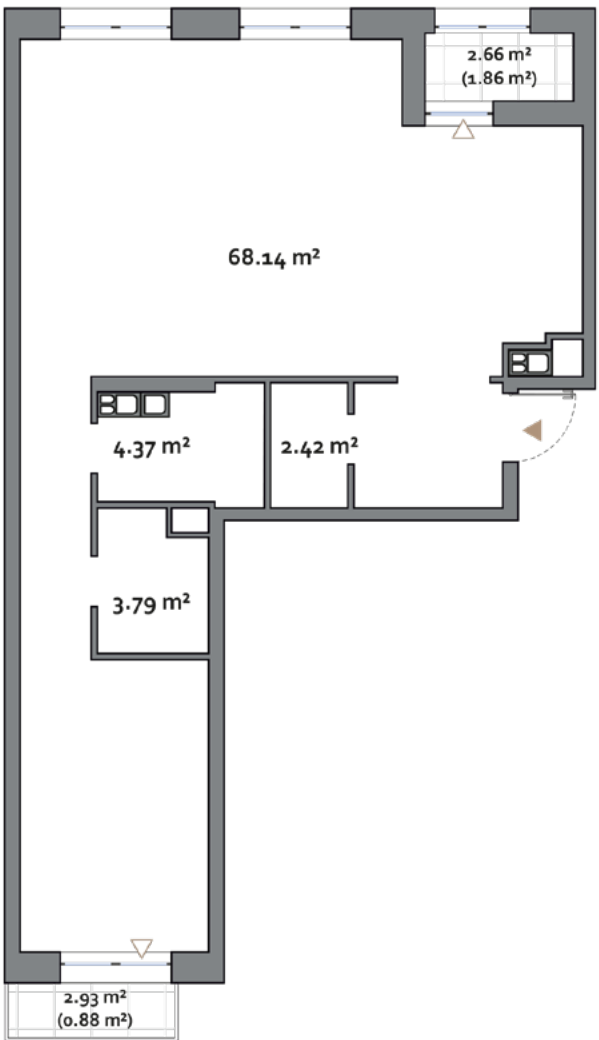
1. All room dimensions are in metric and measured to structural elements and exclude wall finishes and construction tolerances.
2. All dimensions have been provided by our consultant architects.
3. All materials, dimensions, features and amenities are approximate at the time of printing.
4. Actual area may vary from stated area and unit direction may vary from unit to unit. Drawings not to scale. The developer reserves the right to make revisions to the floor plans and any features, materials, dimensions, drawings and amenities mentioned in this brochure without notice.



ALTA

2 BEDROOM  
TYPE B

APARTMENT AREA.....76.94 m<sup>2</sup> - 78.72 m<sup>2</sup>  
BALCONY AREA.....2.66 (1.86 m<sup>2</sup>) - 10.24 (4.29 m<sup>2</sup>)  
NET AREA.....80.49 m<sup>2</sup> - 81.46 m<sup>2</sup>



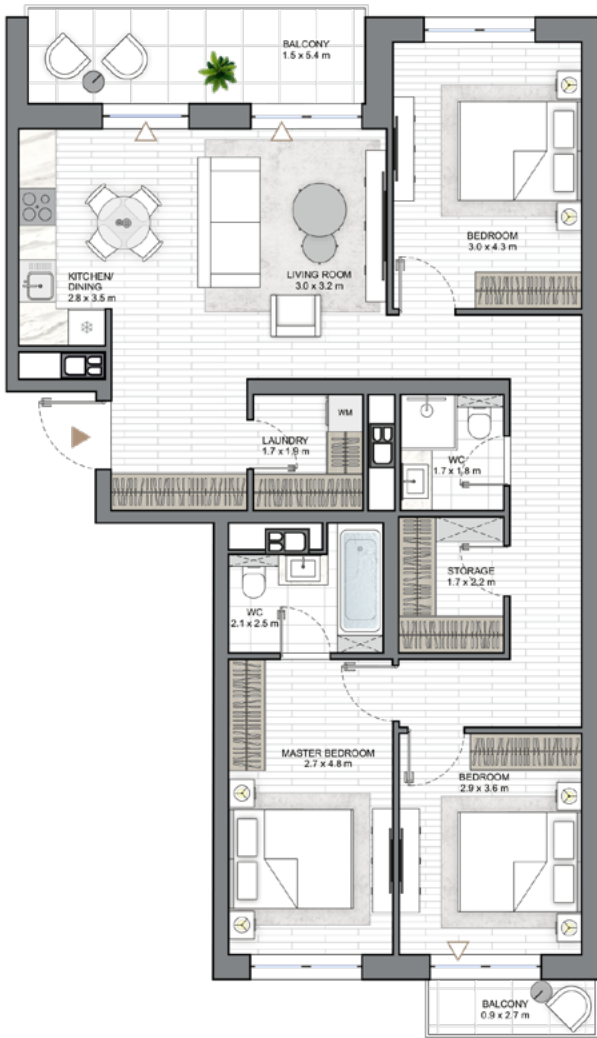
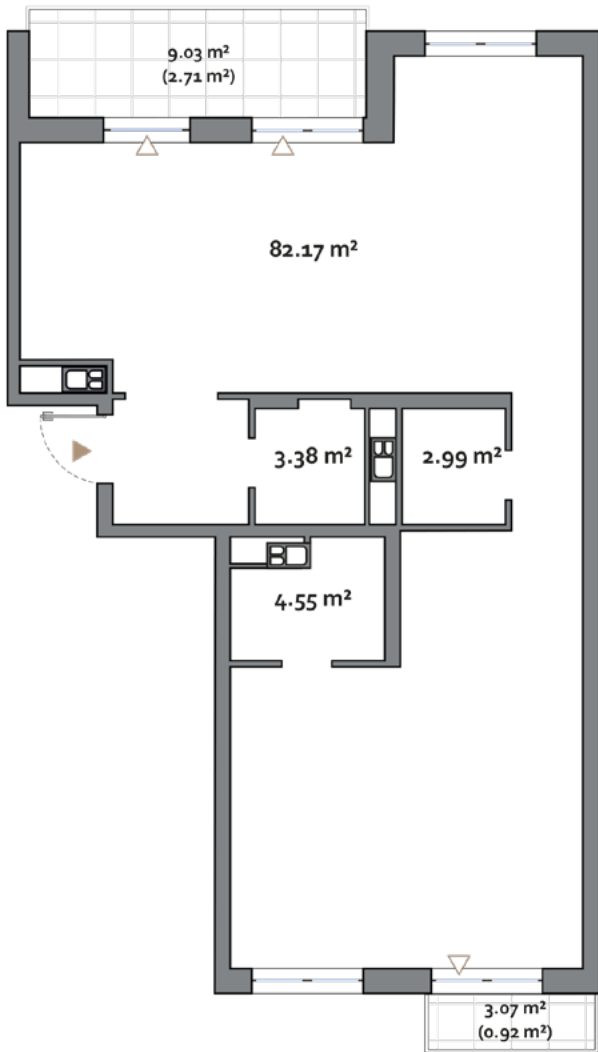
Disclaimer

- 1. All room dimensions are in metric and measured to structural elements and exclude wall finishes and construction tolerances.
- 2. All dimensions have been provided by our consultant architects.
- 3. All materials, dimensions, features and amenities are approximate at the time of printing.
- 4. Actual area may vary from stated area and unit direction may vary from unit to unit. Drawings not to scale. The developer reserves the right to make revisions to the floor plans and any features, materials, dimensions, drawings and amenities mentioned in this brochure without notice.

ALTA

3 BEDROOM  
TYPE A

APARTMENT AREA..... 89.41 m<sup>2</sup> - 91.02 m<sup>2</sup>  
BALCONY AREA.....10.23 (3.07 m<sup>2</sup>) - 12.18 (3.65 m<sup>2</sup>)  
NET AREA.....92.48 m<sup>2</sup> - 94.65 m<sup>2</sup>



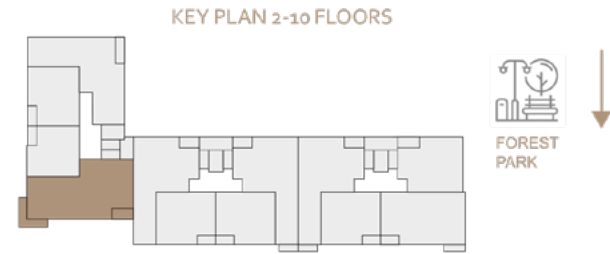
Disclaimer

- 1. All room dimensions are in metric and measured to structural elements and exclude wall finishes and construction tolerances.
- 2. All dimensions have been provided by our consultant architects.
- 3. All materials, dimensions, features and amenities are approximate at the time of printing.
- 4. Actual area may vary from stated area and unit direction may vary from unit to unit. Drawings not to scale. The developer reserves the right to make revisions to the floor plans and any features, materials, dimensions, drawings and amenities mentioned in this brochure without notice.



## ALTA

APARTMENT AREA.....93.30 m<sup>2</sup> - 93.62 m<sup>2</sup>  
BALCONY AREA.....11.70 (4.66 m<sup>2</sup>) - 13.42 (4.03 m<sup>2</sup>)  
NET AREA.....97.65 m<sup>2</sup> - 97.96 m<sup>2</sup>



# NOTES ABOUT YOUR NEW APARTMENT

This image shows a single sheet of white paper with horizontal ruling lines. The lines are evenly spaced and run across the width of the page. There are no margins, text, or other markings on the paper.

1. All room dimensions are in metric and measured to structural elements and exclude wall finishes and construction tolerances.
2. All dimensions have been provided by our consultant architects.
3. All materials, dimensions, features and amenities are approximate at the time of printing.
4. Actual area may vary from stated area and unit direction may vary from unit to unit. Drawings not to scale. The developer reserves the right to make revisions to the floor plans and any features, materials, dimensions, drawings and amenities mentioned in this brochure without notice.



# ALTA

NORTHWATERFRONT.BY



International number: +375 17 311-6888

Toll-free number: 8-801-100-3888

North Waterfront Sales Center,  
Sverdlova str. 11, Minsk

**NV** NORTH  
WATERFRONT