

KAYA 2



NW NORTH WATERFRONT

Key Features

Enjoy the charm of a neighborhood immersed in lush, green landscapes. KAYA 2 offers a rich lifestyle, being located at the entrance to the green promenade within walking distance to many amenities including a kindergarten, school, supermarket, cafes and restaurants.

A contemporary rendition of the timeless architectural style aptly captures the essence of North Waterfront, blending technology of the future inspired by the rich history of the past. The advantageous location of KAYA 2, with its convenient access to the Minsk Ring Road and swift reach to the city center, will enable residents to conserve their most precious resource: time.



Perfectly connected

35

mins
Airport

25

mins
City Center

15

mins
National Library

10

mins
Sports Palace

1

mins
Ring Road

30

mins
Railway Station



Location



Building and its surroundings

- access to the Forest Park and Green Trails
- 5-min walk to the Neighborhood square in the 1st phase
- 10-min walk to the Lakeside Park
- facade – decorative plaster finish and porcelain stoneware
- storage rooms
- energy saving aluminum profiles for the windows and balcony doors
- balconies with metal balustrades
- accessible for people of determination
- underground waste disposal system



Building amenities

Parking

- outdoor parking available near the building
- multi-level car park at walking distance

Courtyard

- private outdoor courtyard
- 2600 m² of landscaped area

- children's play area
- bicycle parking

Common areas

- styled residential hallways
- dedicated storage for strollers and pet paw-washing facilities
- relaxation area in lobbies



Apartments

At KAYA 2, our commitment lies in delivering inspiring interior design, meticulously crafting every detail.

- exquisite interior finishes
- tall windows providing plenty of natural light
- modern kitchens with ample counter space and functional arrangement for appliances
- apartments come with fully fitted out bathrooms - vanity, toilets, bathtubs. Second bathrooms have showers
- air-conditioning system
- balconies and terraces



Installment payment plan

We offer our customers a selection of the finest financial plans & conditions, allowing them to opt for the most convenient payment method. The cost of the flat remains consistent whether purchased through instalments or credit.

Unmatched installments from the developer

A down payment of 50% is required, with the remaining amount payable in monthly installments of 10%.

Exclusive credit terms from MTBank

A loan term of up to 30 years is available, covering up to 90% of the apartment's value. During the initial 12 months, the interest rate is 0.001%, thereafter adjusting to 14.96% (floating rate linked to the overnight rate of the NBRB). Early repayment is permitted without any penalties or commissions.

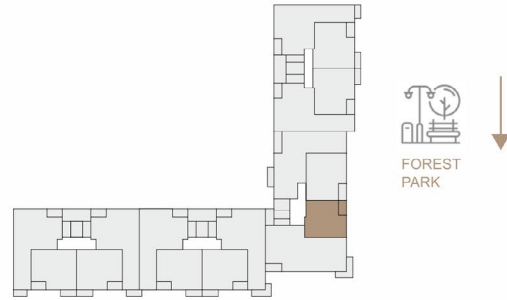


KAYA 2

STUDIO TYPE A

APARTMENT AREA.....41.57 m² - 41.72 m²
 BALCONY AREA.....2.96(2.07 m²) - 4.51(1.35 m²)
 NET AREA.....42.92 m² - 43.79 m²

KEY PLAN
FLOORS 2-10



Disclaimer

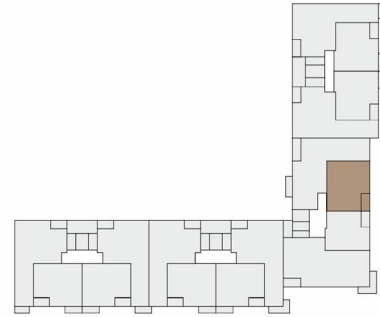
1. All room dimensions are in metric and measured to structural elements and exclude wall finishes and construction tolerances.
2. All dimensions have been provided by our consultant architects.
3. All materials, dimensions, features and amenities are approximate at the time of printing.
4. Actual area may vary from stated area and unit direction may vary from unit to unit. Drawings not to scale. The developer reserves the right to make revisions to the floor plans and any features, materials, dimensions, drawings and amenities mentioned in this brochure without notice.

KAYA 2

1-BEDROOM TYPE A

APARTMENT AREA.....48.09 m² - 48.95 m²
 BALCONY AREA.....2.96(2.07 m²) - 4.51(1.35 m²)
 NET AREA.....49.44 m² - 51.02 m²

KEY PLAN
FLOORS 1-10



Disclaimer

1. All room dimensions are in metric and measured to structural elements and exclude wall finishes and construction tolerances.
2. All dimensions have been provided by our consultant architects.
3. All materials, dimensions, features and amenities are approximate at the time of printing.
4. Actual area may vary from stated area and unit direction may vary from unit to unit. Drawings not to scale. The developer reserves the right to make revisions to the floor plans and any features, materials, dimensions, drawings and amenities mentioned in this brochure without notice.

KAYA 2

1-BEDROOM TYPE B

APARTMENT AREA.....48.73 m² - 49.71 m²
 BALCONY AREA.....2.96(2.07 m²) - 8.16(2.44 m²)
 NET AREA.....50.93 m² - 51.78 m²

KEY PLAN
FLOORS 1-10



Disclaimer

1. All room dimensions are in metric and measured to structural elements and exclude wall finishes and construction tolerances.
2. All dimensions have been provided by our consultant architects.
3. All materials, dimensions, features and amenities are approximate at the time of printing.
4. Actual area may vary from stated area and unit direction may vary from unit to unit. Drawings not to scale. The developer reserves the right to make revisions to the floor plans and any features, materials, dimensions, drawings and amenities mentioned in this brochure without notice.

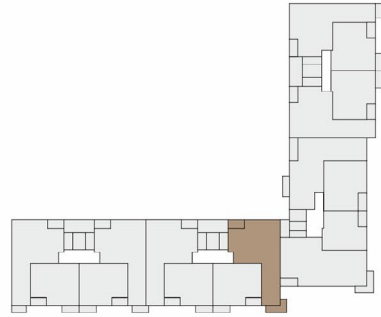
1 BR

KAYA 2

2-BEDROOM TYPE A

APARTMENT AREA.....66.65 m² - 68.62 m²
 BALCONY AREA.....7.67(3.49 m²) - 9.40(2.81 m²)
 NET AREA.....69.46 m² - 72.11 m²

KEY PLAN FLOORS 2-6



Disclaimer

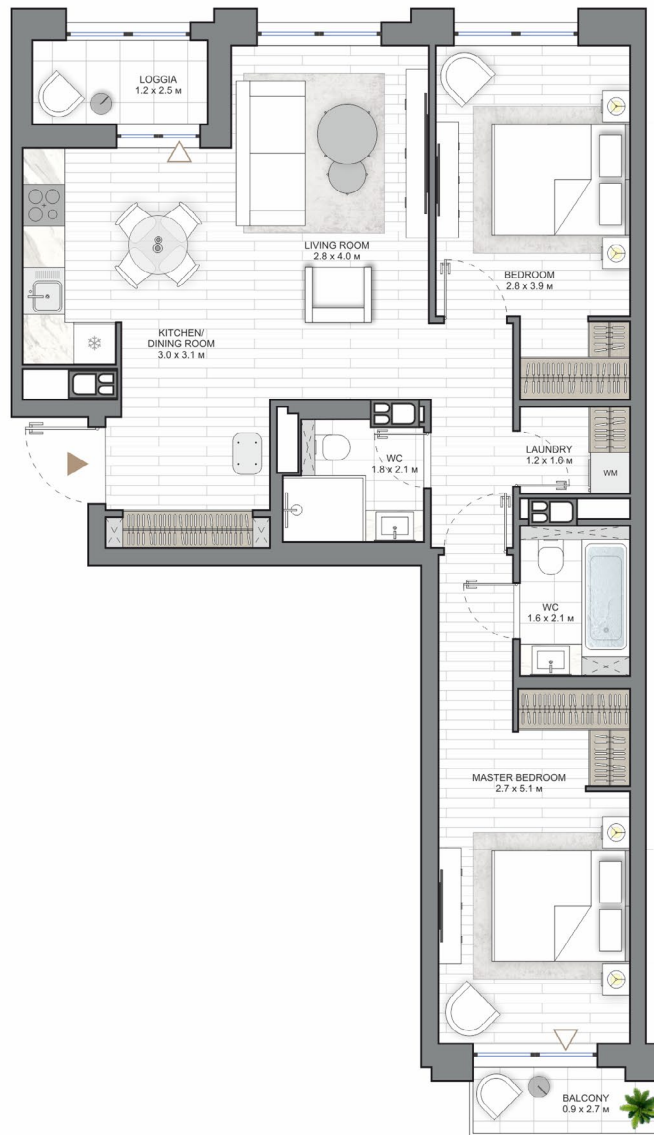
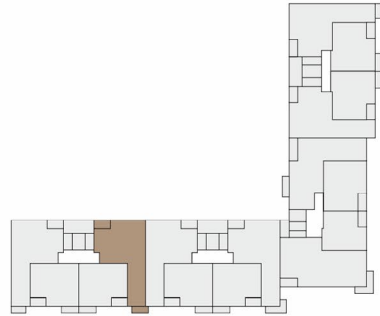
1. All room dimensions are in metric and measured to structural elements and exclude wall finishes and construction tolerances.
2. All dimensions have been provided by our consultant architects.
3. All materials, dimensions, features and amenities are approximate at the time of printing.
4. Actual area may vary from stated area and unit direction may vary from unit to unit. Drawings not to scale. The developer reserves the right to make revisions to the floor plans and any features, materials, dimensions, drawings and amenities mentioned in this brochure without notice.

KAYA 2

2-BEDROOM TYPE B

APARTMENT AREA.....65.70 m² - 71.20 m²
 BALCONY AREA.....2.99(2.09 m²) - 9.44(2.83 m²)
 NET AREA.....68.29 m² - 73.20 m²

KEY PLAN
FLOORS 1-10



Disclaimer

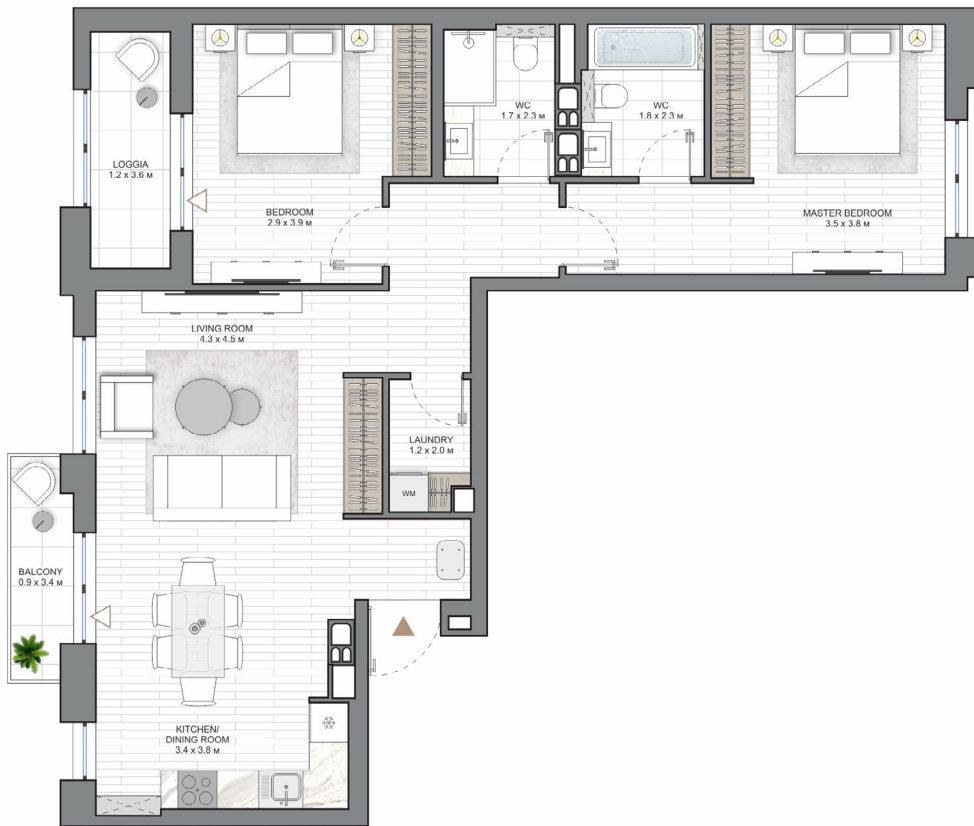
1. All room dimensions are in metric and measured to structural elements and exclude wall finishes and construction tolerances.
2. All dimensions have been provided by our consultant architects.
3. All materials, dimensions, features and amenities are approximate at the time of printing.
4. Actual area may vary from stated area and unit direction may vary from unit to unit. Drawings not to scale. The developer reserves the right to make revisions to the floor plans and any features, materials, dimensions, drawings and amenities mentioned in this brochure without notice.

KAYA 2

2-BEDROOM TYPE C

APARTMENT AREA 72.72 m² - 78.92 m²
 BALCONY AREA 4.53(3.17 m²) - 6.05(1.81 m²)
 NET AREA 75.89 m² - 82.77 m²

KEY PLAN
FLOORS 1-10



Disclaimer

1. All room dimensions are in metric and measured to structural elements and exclude wall finishes and construction tolerances.
2. All dimensions have been provided by our consultant architects.
3. All materials, dimensions, features and amenities are approximate at the time of printing.
4. Actual area may vary from stated area and unit direction may vary from unit to unit. The developer reserves the right to make revisions to the floor plans and any features, materials, dimensions, drawings and amenities mentioned in this brochure without notice.

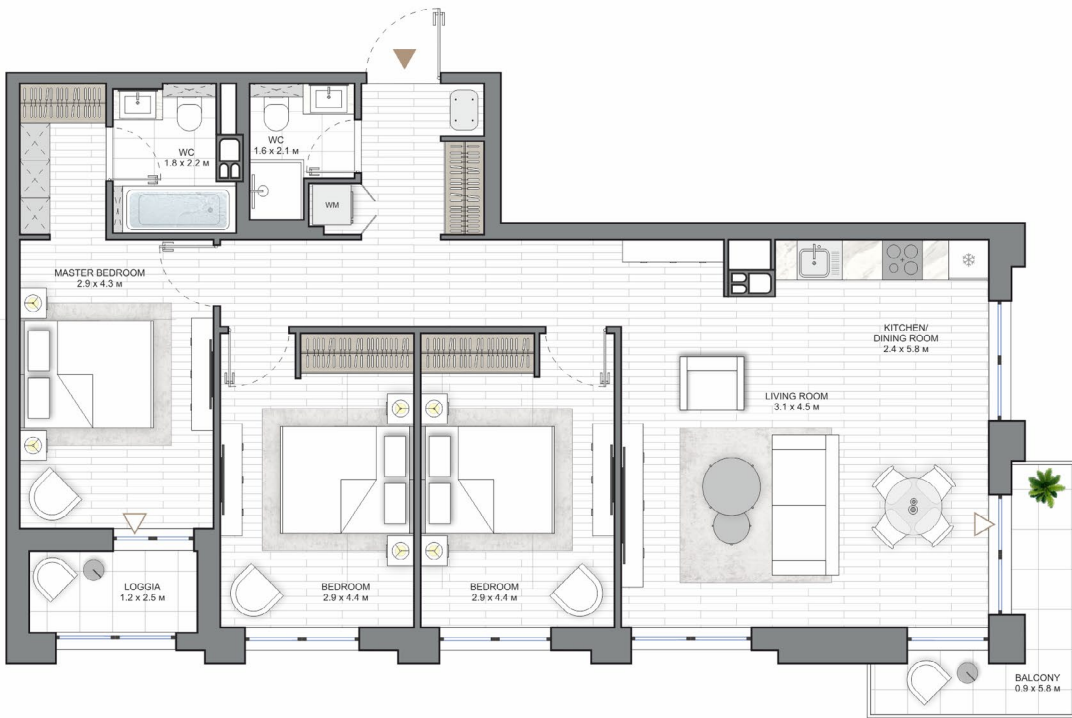


KAYA 2

3-BEDROOM TYPE A

APARTMENT AREA.....89.06 m² - 89.26 m²
 BALCONY AREA..... 2.96(2.07 m²) - 8.17(3.63 m²)
 NET AREA.....91.33 m² - 92.69 m²

KEY PLAN FLOORS 1-9



Disclaimer

1. All room dimensions are in metric and measured to structural elements and exclude wall finishes and construction tolerances.
2. All dimensions have been provided by our consultant architects.
3. All materials, dimensions, features and amenities are approximate at the time of printing.
4. Actual area may vary from stated area and unit direction may vary from unit to unit. Drawings not to scale. The developer reserves the right to make revisions to the floor plans and any features, materials, dimensions, drawings and amenities mentioned in this brochure without notice.