

NV NORTH  
WATERFRONT

# KAYA 1



# KEY FEATURES

Take pleasure in the charm of the neighborhood drowned in the lush, green landscapes. KAYA 1 offers a rich lifestyle being positioned in the corner of green neighborhood with an array of amenities in the nearby vicinity including a kindergarten, a school, a supermarket, cafes and restaurants.

A contemporary rendition of the timeless architectural style aptly captures the essence of North Waterfront, blending technology of the future inspired by the rich history of the past. The advantageous location of KAYA 1, with its convenient access to the Minsk Ring Road and swift reach to the city center, will enable residents to conserve their most precious resource: time.



Floors



Lobbies



Apartments

# PERFECTLY CONNECTED

35

mins

Airport

25

mins

City Center

15

mins

National Library

10

mins

Sports Palace

1

mins

Ring Road

30

mins

Railway Station



# LOCATION



# BUILDING AND ITS SURROUNDINGS

- access to the Forest Park and Green Trails
- 5-min walk to the Neighborhood square in the 1<sup>st</sup> phase
- 10-min walk to the Lakeside Park
- magnificent views on the fascinating new sculpture
- facade – decorative plaster finish and porcelain stoneware
- energy saving aluminum profiles for the windows and balcony doors
- balconies with metal balustrades
- accessible for people of determination
- underground waste disposal system



# BUILDING AMENITIES

## Parking

- outdoor parking available near the building
- multi-level car park at walking distance

## Courtyard

- private outdoor courtyard
- 2600 m<sup>2</sup> of landscaped area

- children's play area
- bicycle parking

## Common areas

- styled residential hallways
- dedicated storage for strollers and pet paw-washing facilities
- relaxation area in lobbies



# APARTMENTS

Fusion of contemporary aesthetics and functionality of KAYA 1 turns your home into a hub of efficiency and sophistication.

- enhanced floor plans maximizing effective space utilization
- ceiling height of 2.7 meters
- floor to ceiling windows



# INSTALLMENT PAYMENT PLAN

We offer our customers a selection of the finest financial plans & conditions, allowing them to opt for the most convenient payment method. The cost of the flat remains consistent whether purchased through instalments or credit.

## **Unmatched installments from the developer**

A down payment of 50% is required, with the remaining amount payable in monthly installments of 10%.

## **Exclusive credit terms from MTBank**

A loan term of up to 30 years is available, covering up to 90% of the apartment's value. During the initial 12 months, the interest rate is 0.001%, thereafter adjusting to 14.52% (floating rate linked to the overnight rate of the NBRB). Early repayment is permitted without any penalties or commissions.





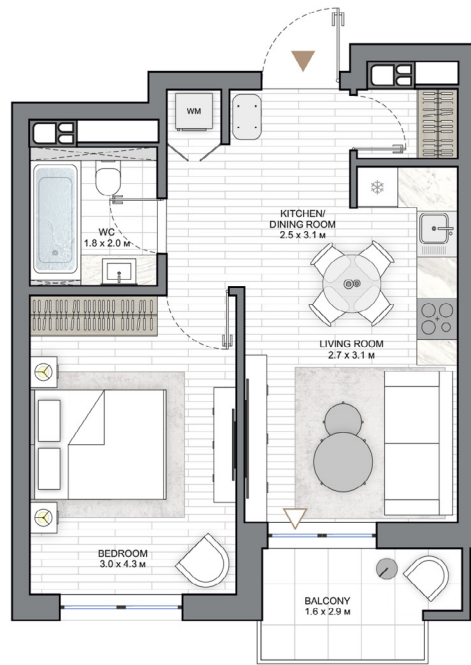
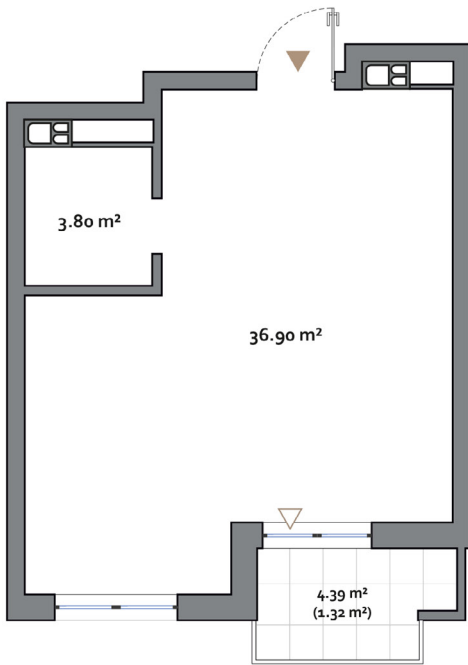
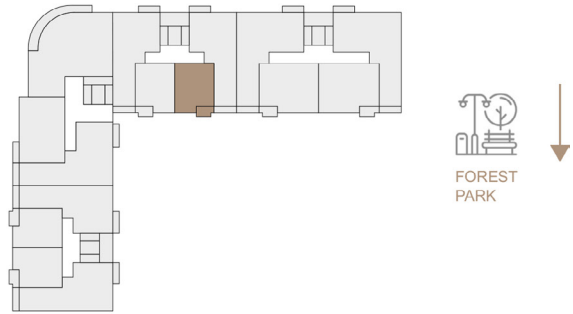
# KAYA 1

1 BR

## 1 BEDROOM TYPE A

APARTMENT AREA ..... 40.68 m<sup>2</sup> - 41.28 m<sup>2</sup>  
 BALCONY AREA ..... 4.39 (1.32 m<sup>2</sup>) - 6.67 (2.00 m<sup>2</sup>)  
 NET AREA ..... 42.00 m<sup>2</sup> - 43.28 m<sup>2</sup>

KEY PLAN 2-11 FLOORS



**Disclaimer**

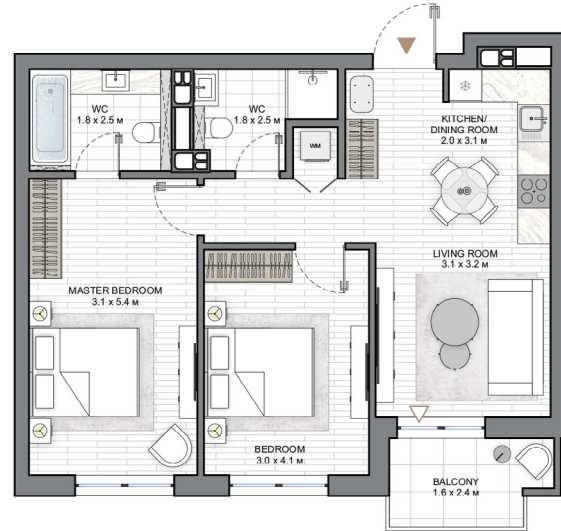
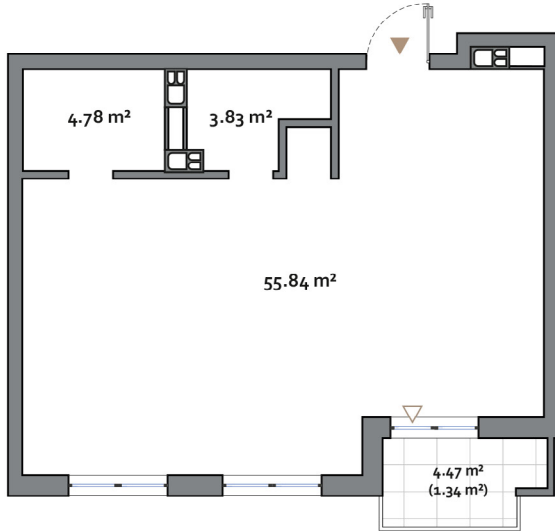
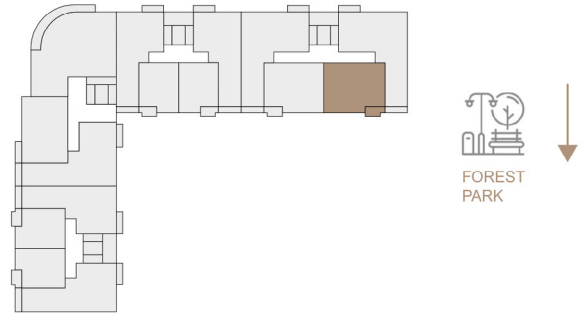
1. All room dimensions are in metric and measured to structural elements and exclude wall finishes and construction tolerances.
2. All dimensions have been provided by our consultant architects.
3. All materials, dimensions, features and amenities are approximate at the time of printing.
4. Actual area may vary from stated area and unit direction may vary from unit to unit. Drawings not to scale. The developer reserves the right to make revisions to the floor plans and any features, materials, dimensions, drawings and amenities mentioned in this brochure without notice.

# KAYA 1

## 2 BEDROOM TYPE A

APARTMENT AREA ..... 63.65 m<sup>2</sup> - 64.56 m<sup>2</sup>  
 BALCONY AREA ..... 3.51 (1.05 m<sup>2</sup>) - 9.95 (2.99 m<sup>2</sup>)  
 NET AREA ..... 64.70 m<sup>2</sup> - 66.64 m<sup>2</sup>

KEY PLAN 2-9 FLOORS



**Disclaimer**

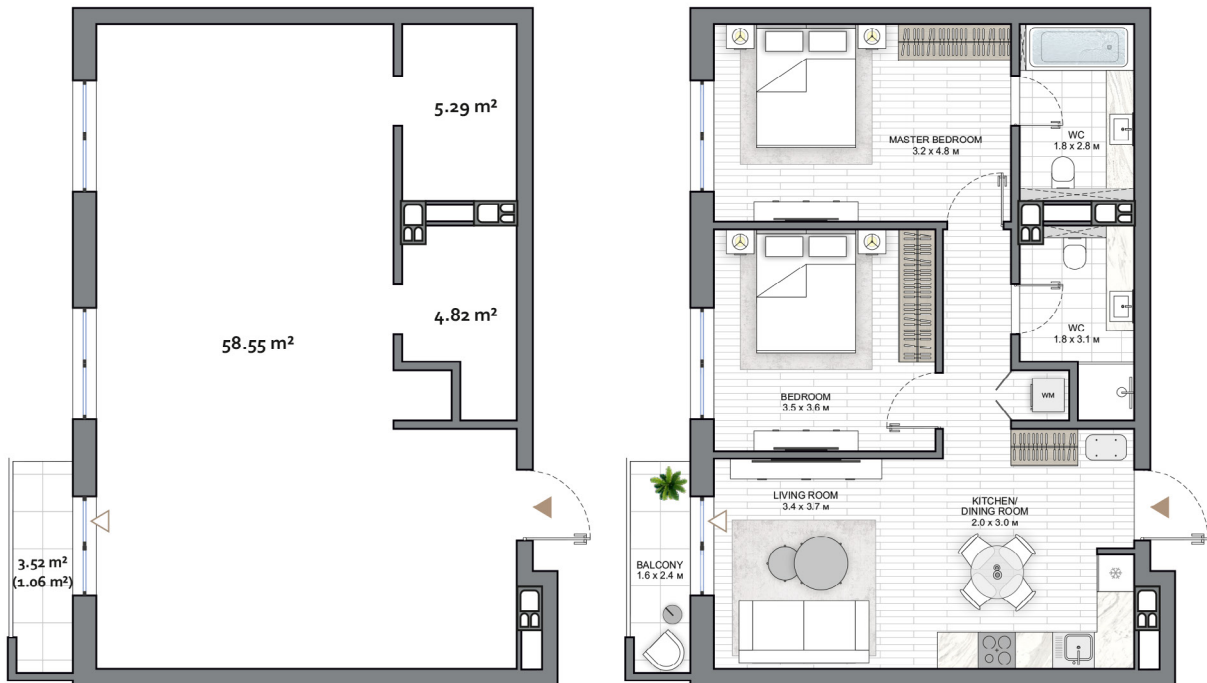
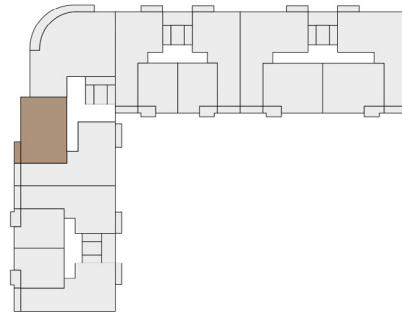
1. All room dimensions are in metric and measured to structural elements and exclude wall finishes and construction tolerances.
2. All dimensions have been provided by our consultant architects.
3. All materials, dimensions, features and amenities are approximate at the time of printing.
4. Actual area may vary from stated area and unit direction may vary from unit to unit. The developer reserves the right to make revisions to the floor plans and any features, materials, dimensions, drawings and amenities mentioned in this brochure without notice.

# KAYA 1

## 2 BEDROOM TYPE B

APARTMENT AREA ..... 63.98 m<sup>2</sup> - 68.77 m<sup>2</sup>  
 BALCONY AREA ..... 3.19 (0.96 m<sup>2</sup>) - 12.79 (3.84 m<sup>2</sup>)  
 NET AREA ..... 67.82 m<sup>2</sup> - 69.83 m<sup>2</sup>

KEY PLAN 2-10 FLOORS



### Disclaimer

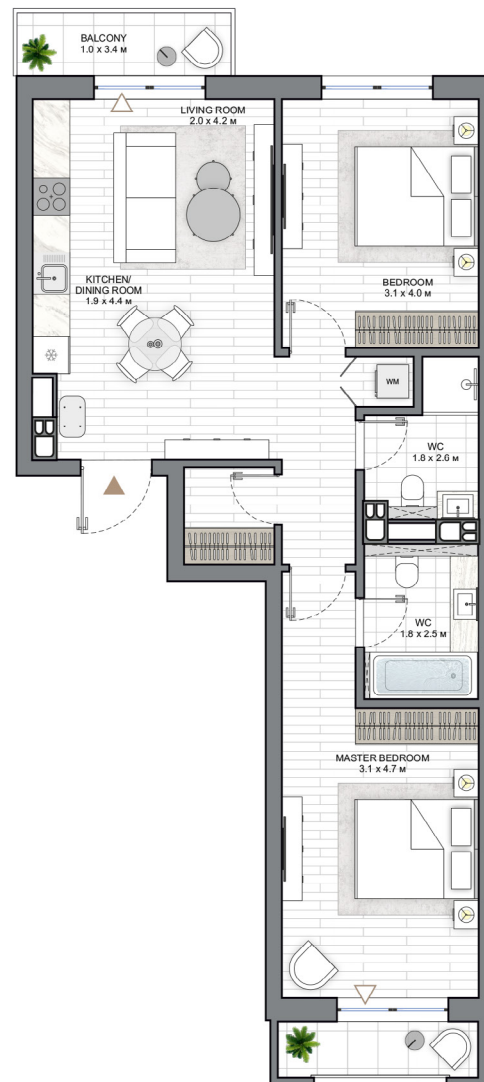
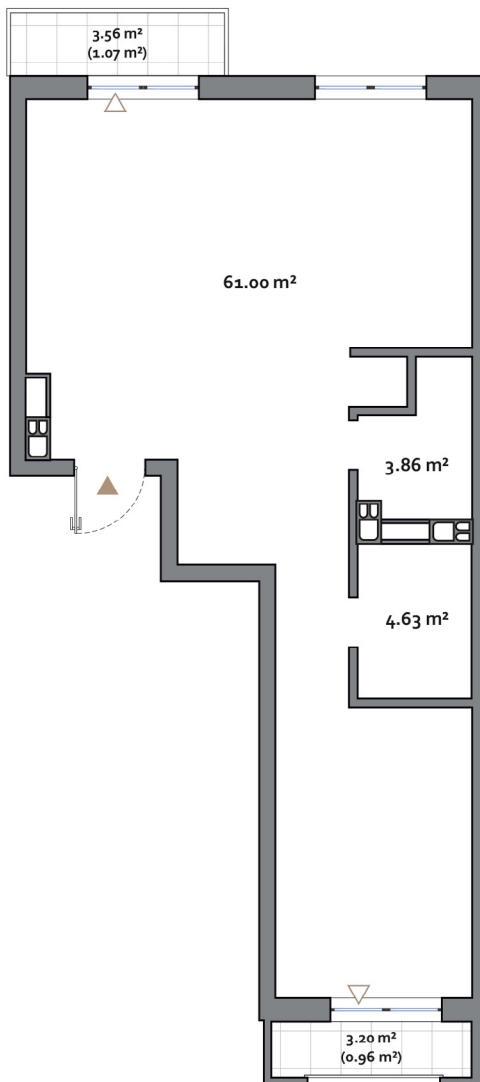
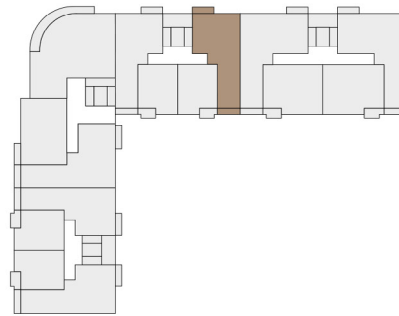
1. All room dimensions are in metric and measured to structural elements and exclude wall finishes and construction tolerances.
2. All dimensions have been provided by our consultant architects.
3. All materials, dimensions, features and amenities are approximate at the time of printing.
4. Actual area may vary from stated area and unit direction may vary from unit to unit. The developer reserves the right to make revisions to the floor plans and any features, materials, dimensions, drawings and amenities mentioned in this brochure without notice.

# KAYA 1

## 2 BEDROOM TYPE C

APARTMENT AREA ..... 68.15 m<sup>2</sup> - 69.15 m<sup>2</sup>  
 BALCONY AREA ..... 4.22 (1.27 m<sup>2</sup>) - 22.48 (6.74 m<sup>2</sup>)  
 NET AREA ..... 69.44 m<sup>2</sup> - 74.89 m<sup>2</sup>

KEY PLAN 2-11 FLOORS



**Disclaimer**

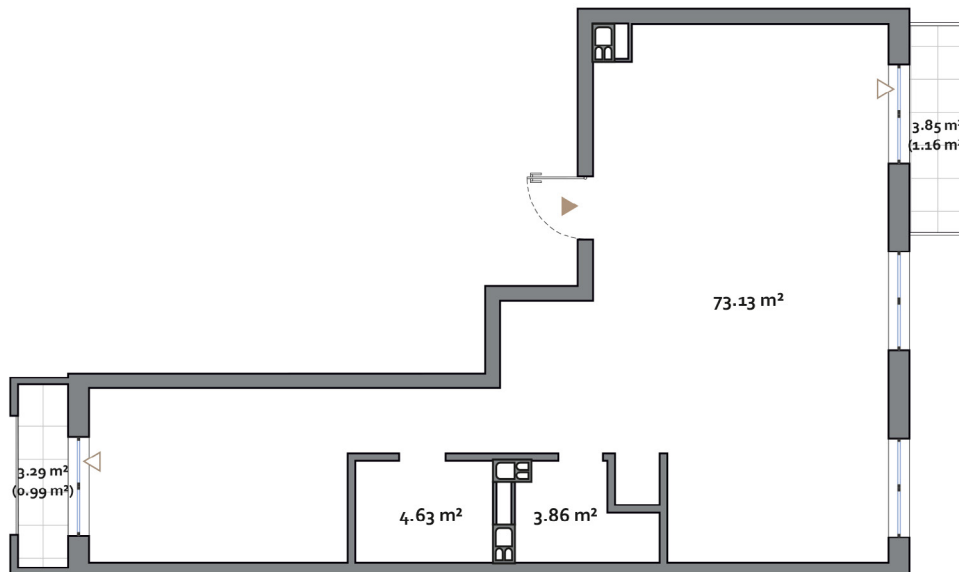
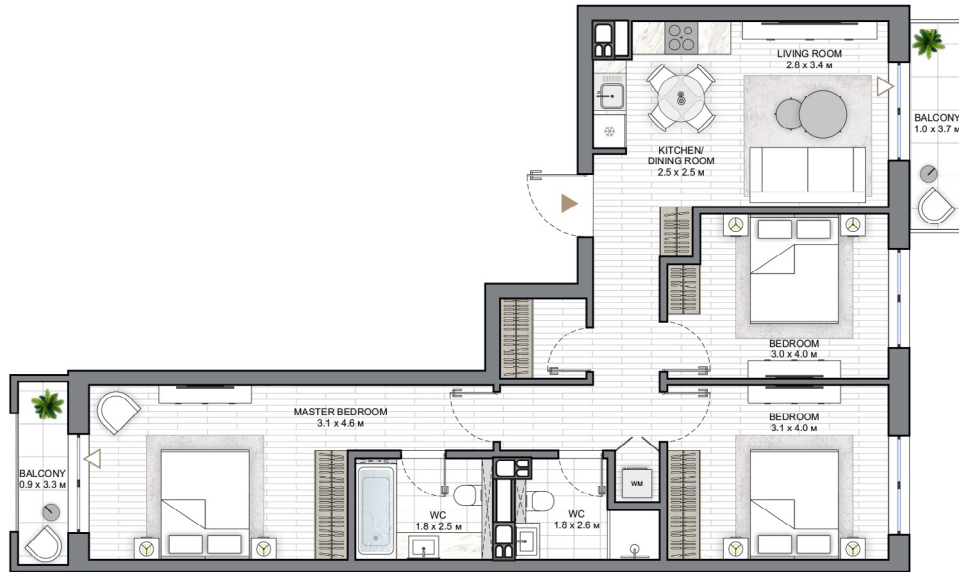
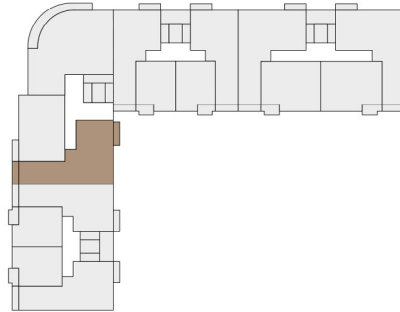
1. All room dimensions are in metric and measured to structural elements and exclude wall finishes and construction tolerances.
2. All dimensions have been provided by our consultant architects.
3. All materials, dimensions, features and amenities are approximate at the time of printing.
4. Actual area may vary from stated area and unit direction may vary from unit to unit. Drawings not to scale. The developer reserves the right to make revisions to the floor plans and any features, materials, dimensions, drawings and amenities mentioned in this brochure without notice.

# KAYA 1

## 3 BEDROOM TYPE A

APARTMENT AREA ..... 75.79 m<sup>2</sup> - 81.74 m<sup>2</sup>  
 BALCONY AREA ..... 7.14 (2.15 m<sup>2</sup>) - 15.54 (4.66 m<sup>2</sup>)  
 NET AREA ..... 78.06 m<sup>2</sup> - 83.88 m<sup>2</sup>

KEY PLAN 2-10 FLOORS



**Disclaimer**

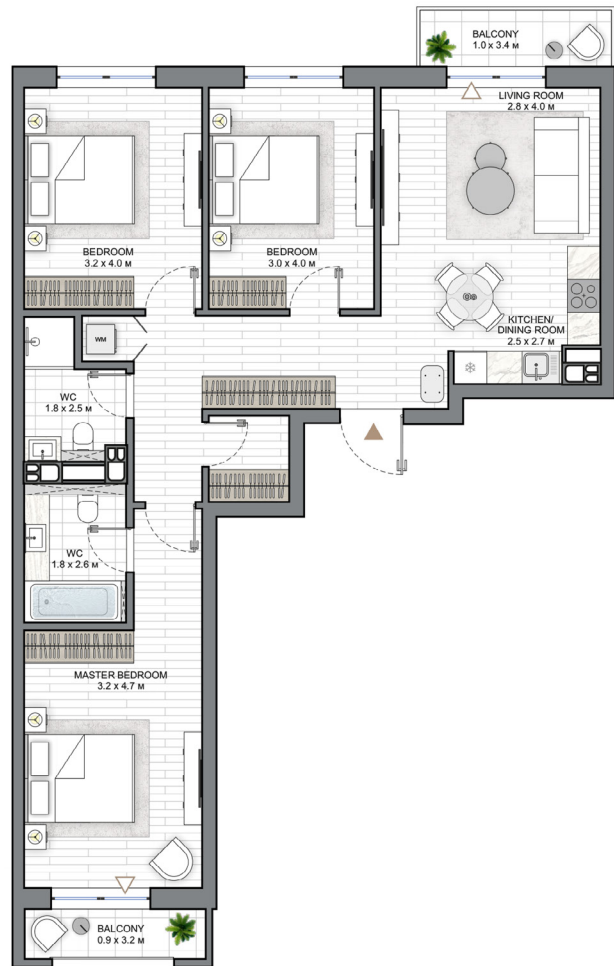
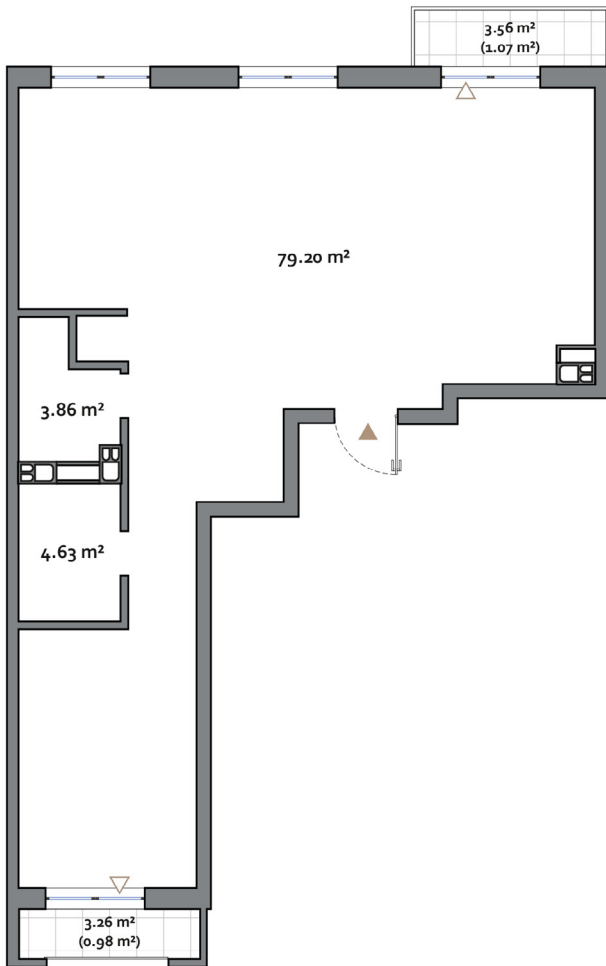
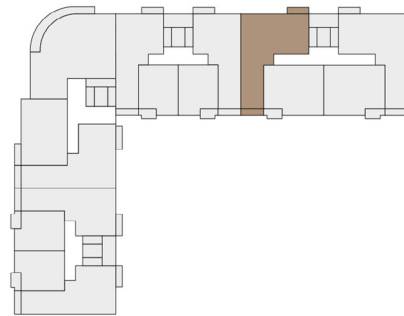
1. All room dimensions are in metric and measured to structural elements and exclude wall finishes and construction tolerances.
2. All dimensions have been provided by our consultant architects.
3. All materials, dimensions, features and amenities are approximate at the time of printing.
4. Actual area may vary from stated area and unit direction may vary from unit to unit. The developer reserves the right to make revisions to the floor plans and any features, materials, dimensions, drawings and amenities mentioned in this brochure without notice.

# KAYA 1

## 3 BEDROOM TYPE B

APARTMENT AREA ..... 84.92 m<sup>2</sup> - 87.80 m<sup>2</sup>  
 BALCONY AREA ..... 4.25 (1.28 m<sup>2</sup>) - 24.88 (7.46 m<sup>2</sup>)  
 NET AREA ..... 86.20 m<sup>2</sup> - 92.61 m<sup>2</sup>

KEY PLAN 2-10 FLOORS



### Disclaimer

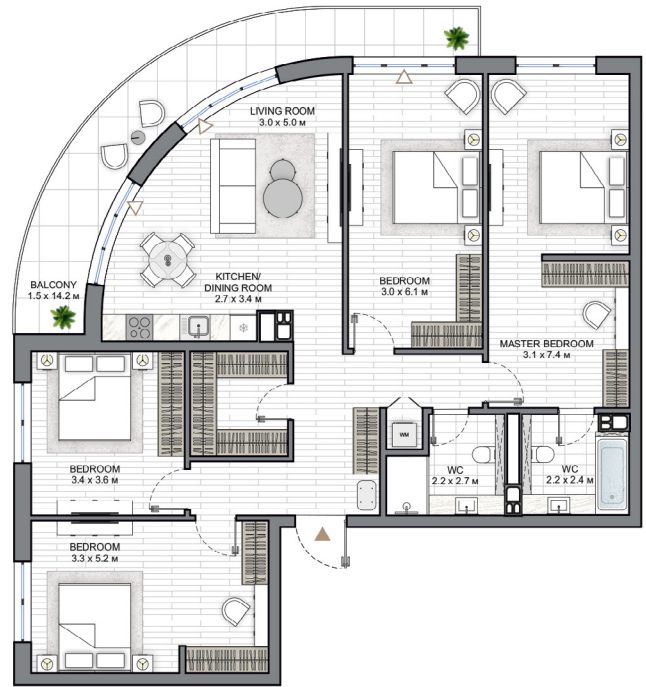
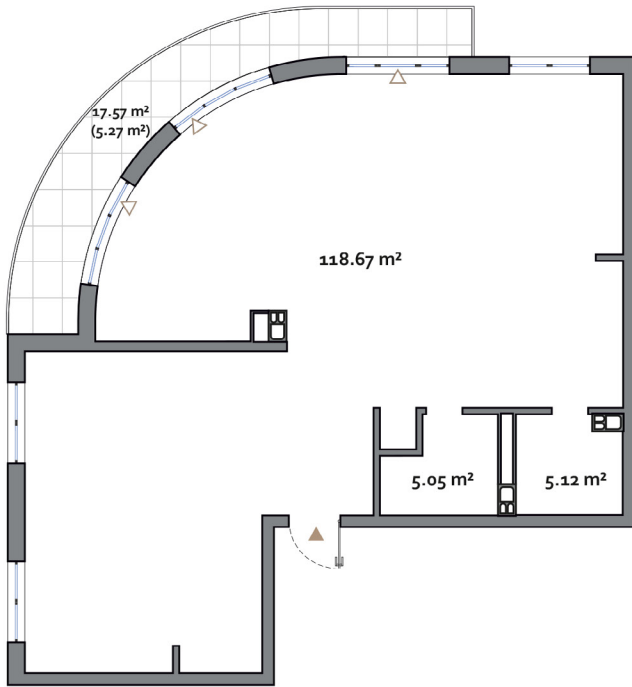
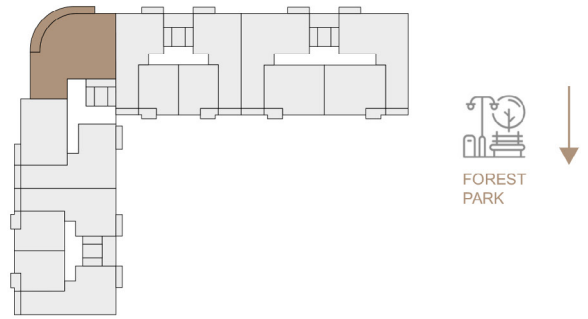
1. All room dimensions are in metric and measured to structural elements and exclude wall finishes and construction tolerances.
2. All dimensions have been provided by our consultant architects.
3. All materials, dimensions, features and amenities are approximate at the time of printing.
4. Actual area may vary from stated area and unit direction may vary from unit to unit. Drawings not to scale. The developer reserves the right to make revisions to the floor plans and any features, materials, dimensions, drawings and amenities mentioned in this brochure without notice.

# KAYA 1

## 4 BEDROOM TYPE A

APARTMENT AREA ..... 118.72 m<sup>2</sup> - 129.33 m<sup>2</sup>  
 BALCONY AREA ..... 9.85 (2.96 m<sup>2</sup>) - 23.92 (7.18 m<sup>2</sup>)  
 NET AREA ..... 121.68 m<sup>2</sup> - 134.11 m<sup>2</sup>

KEY PLAN 2-10 FLOORS



**Disclaimer**

1. All room dimensions are in metric and measured to structural elements and exclude wall finishes and construction tolerances.
2. All dimensions have been provided by our consultant architects.
3. All materials, dimensions, features and amenities are approximate at the time of printing.
4. Actual area may vary from stated area and unit direction may vary from unit to unit. Drawings not to scale. The developer reserves the right to make revisions to the floor plans and any features, materials, dimensions, drawings and amenities mentioned in this brochure without notice.