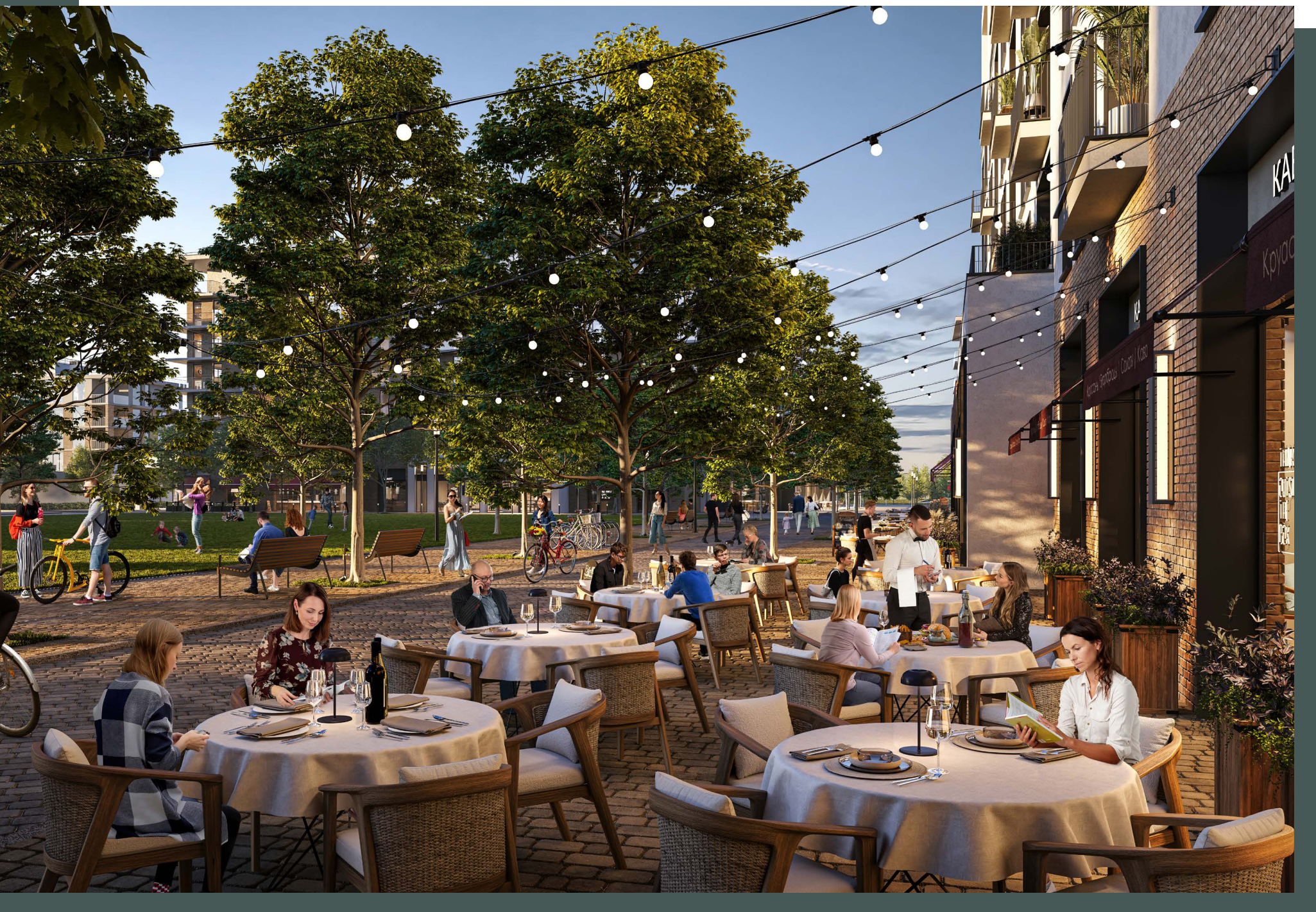


NV NORTH  
WATERFRONT

# KAYA 1







# NORTH WATERFRONT

An exciting new destination for Belarus

The North Waterfront development is a bold new vision for a waterfront community in the heart of the capital that looks to the future whilst drawing inspiration from the neighborhood's rich history.

We have diverted the status quo towards prioritizing residents' well-being and experiences, focusing on the importance of quality amenities and resident's lifestyles by bringing the most incredible designers and architects to deliver world-class communities.



35  
mins  
From the  
Airport

25  
mins  
From the  
City Center

1  
mins  
From the  
Ring Road

15  
mins  
From the  
National Library

30  
mins  
From the  
Railway Station

10  
mins  
From the  
Sports Palace







LAKESIDE PARK

TSNA LAKE

NEIGHBOURHOOD SQUARE

LARA

ELORA

KINDERGARTEN

SUPERMARKET AND MULTI-LEVEL CAR PARK

KAYA 1

ARIA

EDEN

FOREST PARK AND GREEN TRAILS



Exhibition Center



Parks



Ice Rink



Schools



Kid's Play Areas



Dog Parks



Cycling Track



Kindergartens



IT University



Supermarkets



Fishing Pier



Medical Centers





# LAKESIDE PARK

Residents of North Waterfront will be able to enjoy the modern and healthy environment created by the Lakeside Park.

The park offers a wonderful atmosphere perfect for relaxing and socializing amidst a captivating blend of natural beauty and immersive attractions.



Green Parks



Art SCULPTURES



Amphitheater



Sports Areas



Cycling Track



Logging Trail



Barbecue Areas



Picnic Areas



Fishing Pier



Urban Beach



Kid's Play Area



Cafes





# NEIGHBOURHOOD SQUARE

Redefining lifestyle with an open park catering to the neighborhood, with its bespoke details, curated retail boutiques and avant-garde dining experiences.

This pedestrian friendly space located in the neighboring first phase of construction will also become a space for entertainment and special events.



Retail



Restaurants & Cafes



Outdoor Events



Ice Rink



Art Sculptures



Park

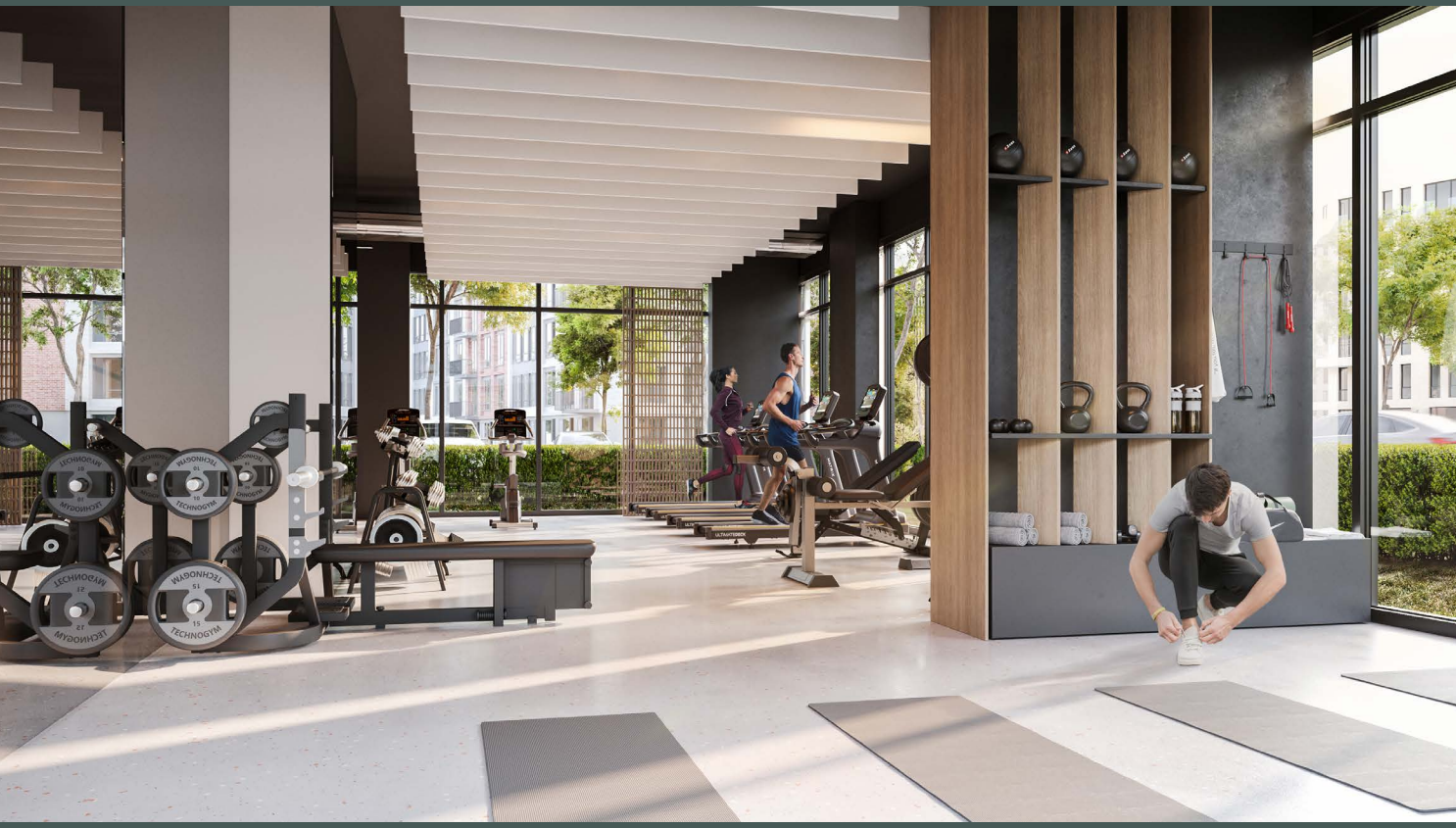


Kid's Play Area



Picnic Areas

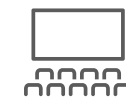




# RESIDENTIAL CLUB

North Waterfront provides a unique experience that combines the benefits of neighborhood living with exclusive amenities and services.

The Residential club, conveniently situated within a walking distance, offers elegantly styled spaces exclusive to residents, enriching contemporary living with comfort and effortless access to premium amenities.



Cinema



Games Area



Gym



Meeting Rooms



Co-working Area



Event Room



Children's Place



Cafe





# FOREST PARK

Lush green spine with walkways, cycling trail and playgrounds for children are characteristic to this phase of North Waterfront.

A Forest Park has been integrated into the development, by designing usable spaces into the existing landscape. This park blends well into the harmonious outdoor spaces that make this neighborhood more green.



Cycling Track



Green Trails



Play Areas



# KAYA 1







# KAYA 1

KAYA 1 stands as an architectural marvel, gracefully located in the corner of a green neighborhood, harmonizing urban living with breathtaking design. Wake up to magnificent views and the sound of nature. KAYA 1 neighborhood caters to all your needs, creating a vibrant atmosphere filled with energy and warmth in every corner!

KAYA 1 represents a contemporary and sophisticated series of residential apartments, ideally situated in an upscale and lively neighborhood with the ultimate amenities, kindergarten, supermarkets, cafes, gym, and the vibrant Neighborhood Square and Lakeside Park in close proximity.



# AN ELEVATED QUALITY OF LIFE







EDEN

ARIA

FOREST PARK

ALTA

KAYA 1

SUPERMARKET & MULTI-LEVEL CAR PARK

LARA

KINDERGARTEN



# INSPIRING SPACES







# INTERIORS

KAYA 1 creates an ideal environment for a balanced and modern way of life. Arrive at your inviting lobby with a lounge space accessorized like a hotel, to receive guests and where residents can socialize.

- Designer lobbies with panoramic glazing & elegant styling
- Elegantly designed hallways
- Dedicated storage for strollers and pet paw-washing facilities

Retreat to the private landscaped courtyard, complete with play areas for children and leisure zones for adults. Create your own happy place at KAYA 1.

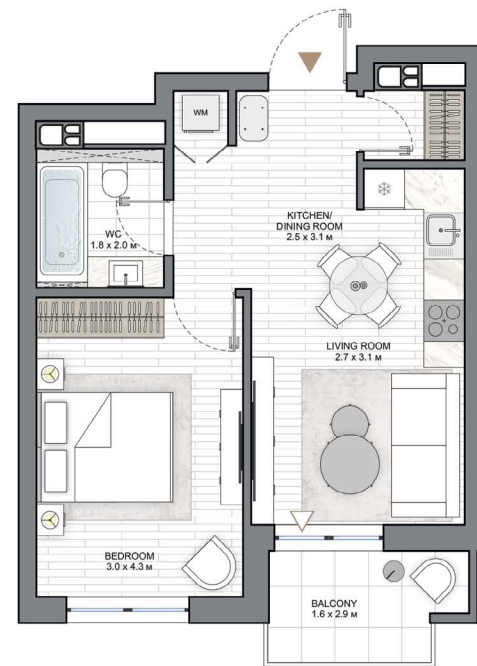
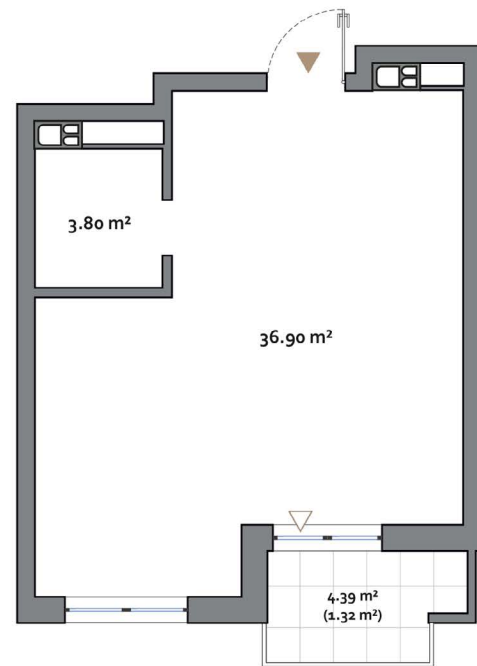
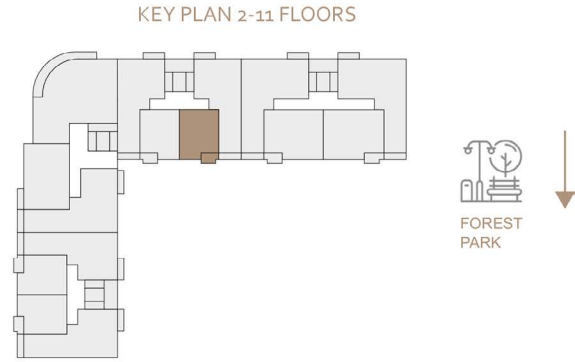


# KAYA 1

1 BR

## 1 BEDROOM TYPE A

APARTMENT AREA ..... 40.68 m<sup>2</sup> - 41.28 m<sup>2</sup>  
 BALCONY AREA ..... 4.39 (1.32 m<sup>2</sup>) - 6.67 (2.00 m<sup>2</sup>)  
 NET AREA ..... 42.00 m<sup>2</sup> - 43.28 m<sup>2</sup>

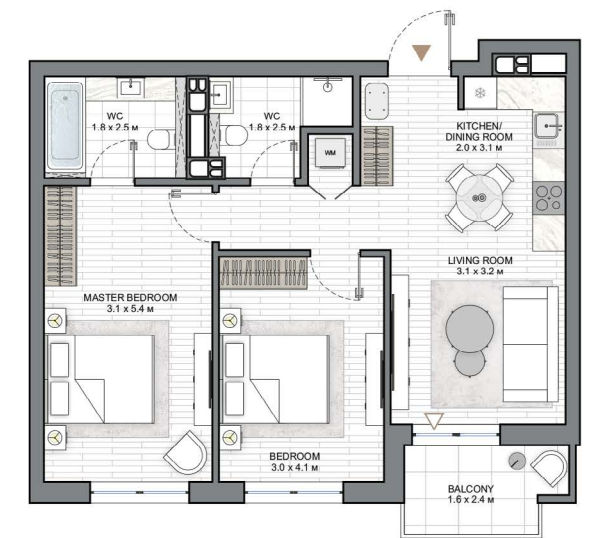
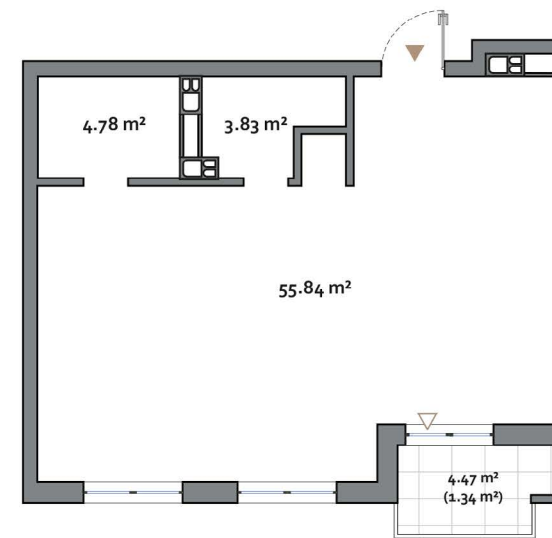
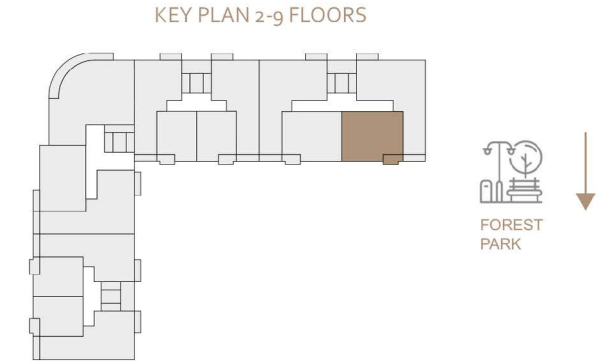


# KAYA 1

2 BR

## 2 BEDROOM TYPE A

APARTMENT AREA ..... 63.65 m<sup>2</sup> - 64.56 m<sup>2</sup>  
 BALCONY AREA ..... 3.51 (1.05 m<sup>2</sup>) - 9.95 (2.99 m<sup>2</sup>)  
 NET AREA ..... 64.70 m<sup>2</sup> - 66.64 m<sup>2</sup>



**Disclaimer**

1. All room dimensions are in metric and measured to structural elements and exclude wall finishes and construction tolerances.
2. All dimensions have been provided by our consultant architects.
3. All materials, dimensions, features and amenities are approximate at the time of printing.
4. Actual area may vary from stated area and unit direction may vary from unit to unit. Drawings not to scale. The developer reserves the right to make revisions to the floor plans and any features, materials, dimensions, drawings and amenities mentioned in this brochure without notice.

**Disclaimer**

1. All room dimensions are in metric and measured to structural elements and exclude wall finishes and construction tolerances.
2. All dimensions have been provided by our consultant architects.
3. All materials, dimensions, features and amenities are approximate at the time of printing.
4. Actual area may vary from stated area and unit direction may vary from unit to unit. Drawings not to scale. The developer reserves the right to make revisions to the floor plans and any features, materials, dimensions, drawings and amenities mentioned in this brochure without notice.

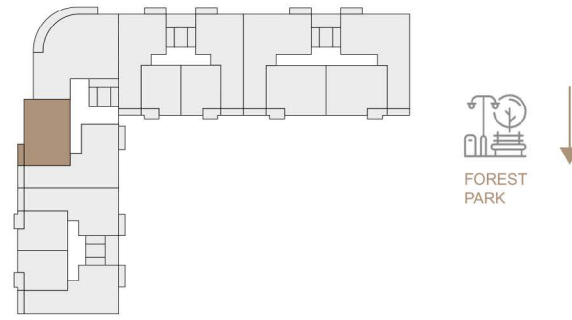


# KAYA 1

## 2 BEDROOM TYPE B

APARTMENT AREA ..... 63.98 m<sup>2</sup> - 68.77 m<sup>2</sup>  
 BALCONY AREA ..... 3.19 (0.96 m<sup>2</sup>) - 12.79 (3.84 m<sup>2</sup>)  
 NET AREA ..... 67.82 m<sup>2</sup> - 69.83 m<sup>2</sup>

KEY PLAN 2-10 FLOORS

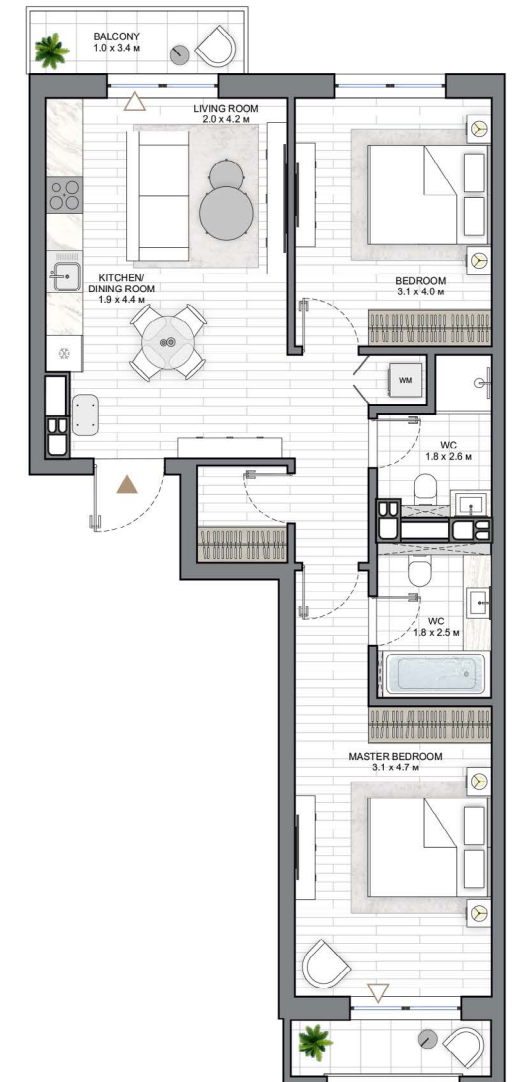
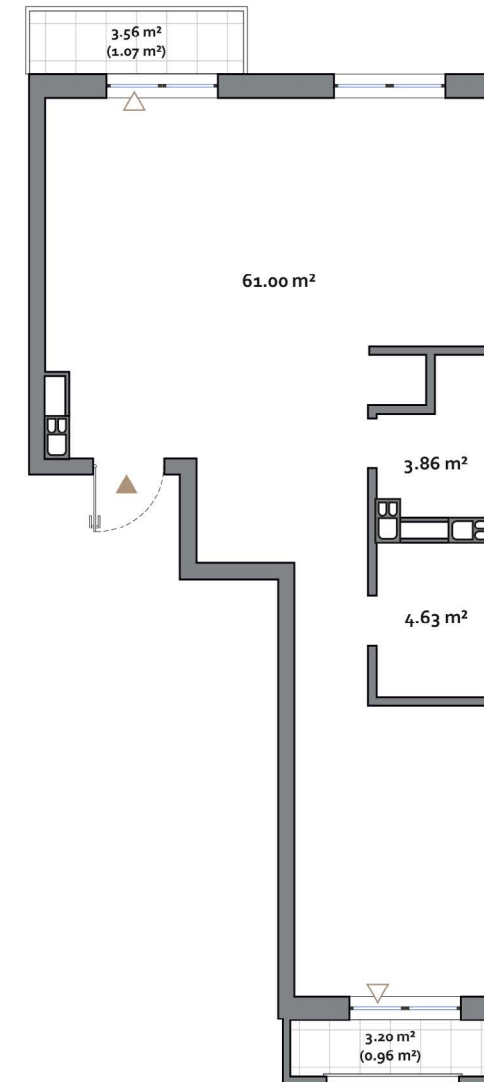
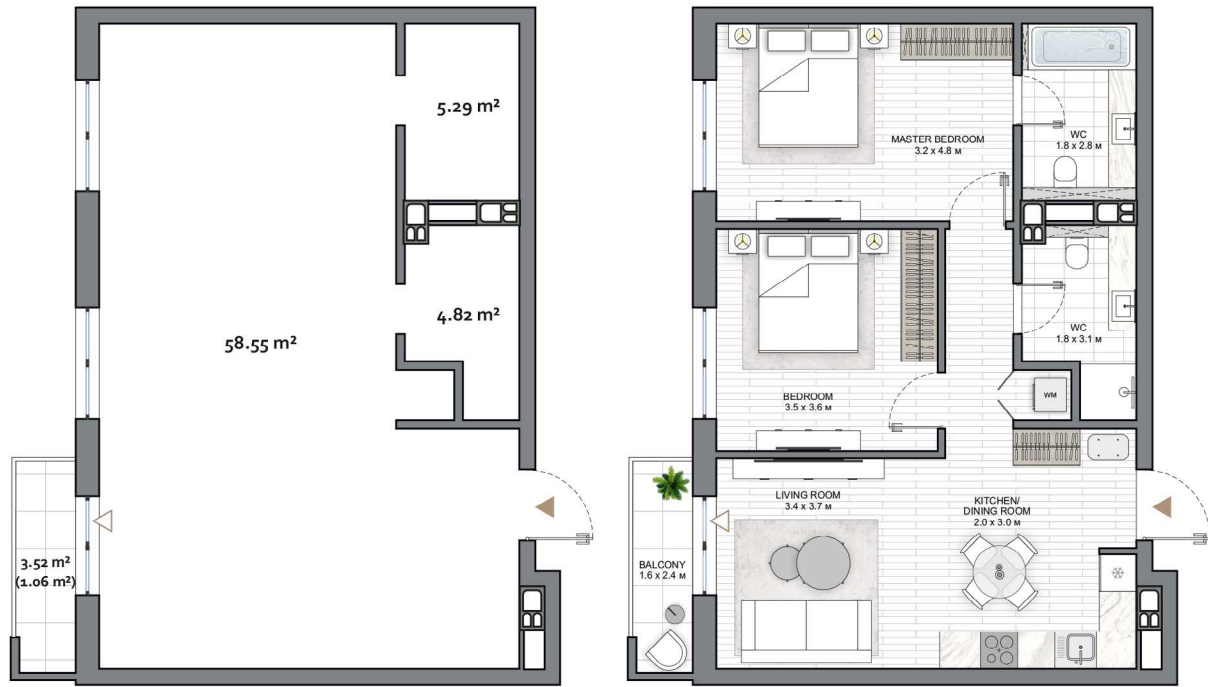
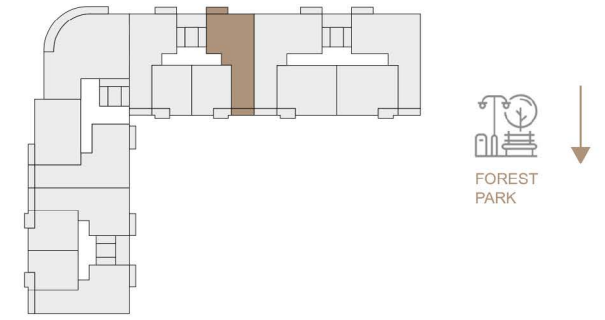


# KAYA 1

## 2 BEDROOM TYPE C

APARTMENT AREA ..... 68.15 m<sup>2</sup> - 69.15 m<sup>2</sup>  
 BALCONY AREA ..... 4.22 (1.27 m<sup>2</sup>) - 22.48 (6.74 m<sup>2</sup>)  
 NET AREA ..... 69.44 m<sup>2</sup> - 74.89 m<sup>2</sup>

KEY PLAN 2-11 FLOORS



**Disclaimer**

1. All room dimensions are in metric and measured to structural elements and exclude wall finishes and construction tolerances.
2. All dimensions have been provided by our consultant architects.
3. All materials, dimensions, features and amenities are approximate at the time of printing.
4. Actual area may vary from stated area and unit direction may vary from unit to unit. Drawings not to scale. The developer reserves the right to make revisions to the floor plans and any features, materials, dimensions, drawings and amenities mentioned in this brochure without notice.

**Disclaimer**

1. All room dimensions are in metric and measured to structural elements and exclude wall finishes and construction tolerances.
2. All dimensions have been provided by our consultant architects.
3. All materials, dimensions, features and amenities are approximate at the time of printing.
4. Actual area may vary from stated area and unit direction may vary from unit to unit. Drawings not to scale. The developer reserves the right to make revisions to the floor plans and any features, materials, dimensions, drawings and amenities mentioned in this brochure without notice.

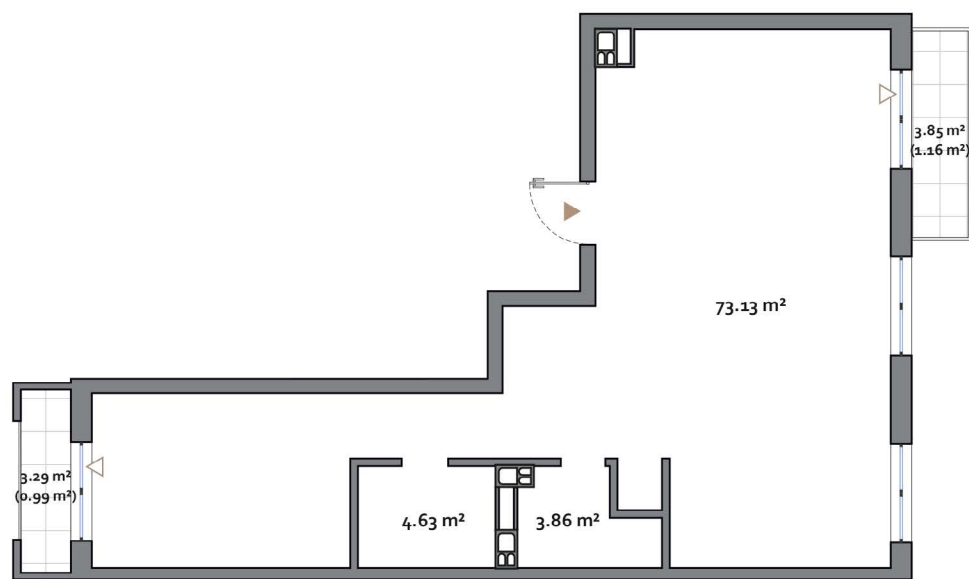
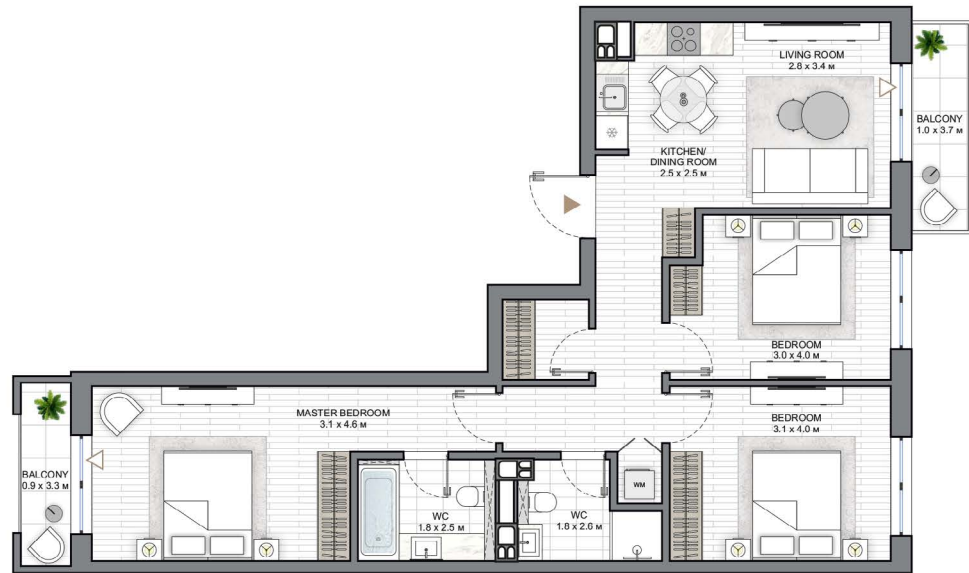
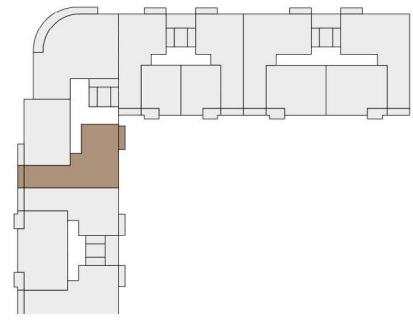


# KAYA 1

## 3 BEDROOM TYPE A

APARTMENT AREA ..... 75.79 m<sup>2</sup> - 81.74 m<sup>2</sup>  
 BALCONY AREA ..... 7.14 (2.15 m<sup>2</sup>) - 15.54 (4.66 m<sup>2</sup>)  
 NET AREA ..... 78.06 m<sup>2</sup> - 83.88 m<sup>2</sup>

KEY PLAN 2-10 FLOORS



Disclaimer

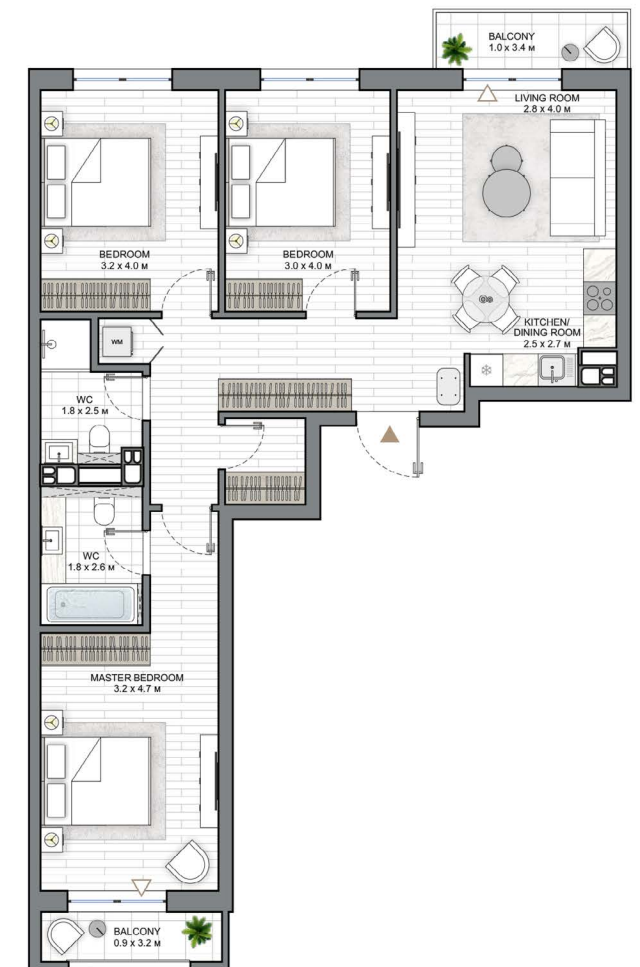
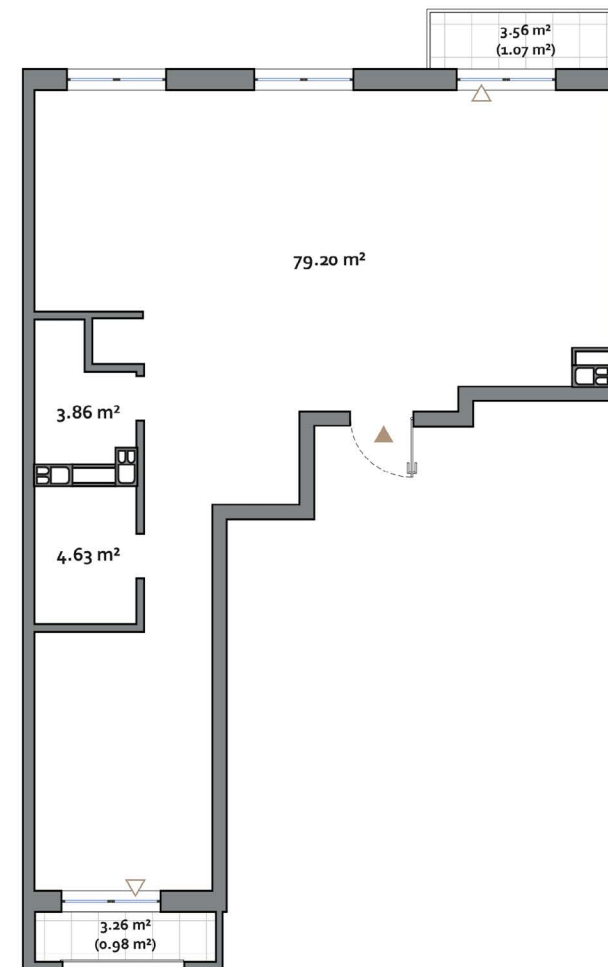
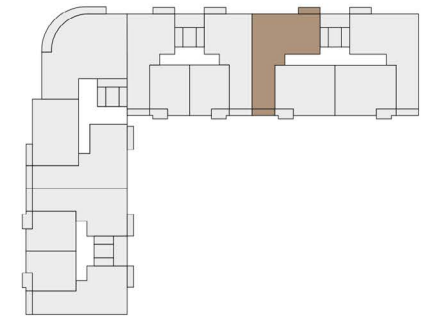
1. All room dimensions are in metric and measured to structural elements and exclude wall finishes and construction tolerances.
2. All dimensions have been provided by our consultant architects.
3. All materials, dimensions, features and amenities are approximate at the time of printing.
4. Actual area may vary from stated area and unit direction may vary from unit to unit. Drawings not to scale. The developer reserves the right to make revisions to the floor plans and any features, materials, dimensions, drawings and amenities mentioned in this brochure without notice.

# KAYA 1

## 3 BEDROOM TYPE B

APARTMENT AREA ..... 84.92 m<sup>2</sup> - 87.80 m<sup>2</sup>  
 BALCONY AREA ..... 4.25 (1.28 m<sup>2</sup>) - 24.88 (7.46 m<sup>2</sup>)  
 NET AREA ..... 86.20 m<sup>2</sup> - 92.61 m<sup>2</sup>

KEY PLAN 2-10 FLOORS



Disclaimer

1. All room dimensions are in metric and measured to structural elements and exclude wall finishes and construction tolerances.
2. All dimensions have been provided by our consultant architects.
3. All materials, dimensions, features and amenities are approximate at the time of printing.
4. Actual area may vary from stated area and unit direction may vary from unit to unit. Drawings not to scale. The developer reserves the right to make revisions to the floor plans and any features, materials, dimensions, drawings and amenities mentioned in this brochure without notice.







# KAYA 1

NORTHWATERFRONT.BY



International number: +375 17 311-6888

Toll-free number: 8-801-100-3888

North Waterfront Sales Center,  
Sverdlova str. 11, Minsk

**NVW** NORTH  
WATERFRONT