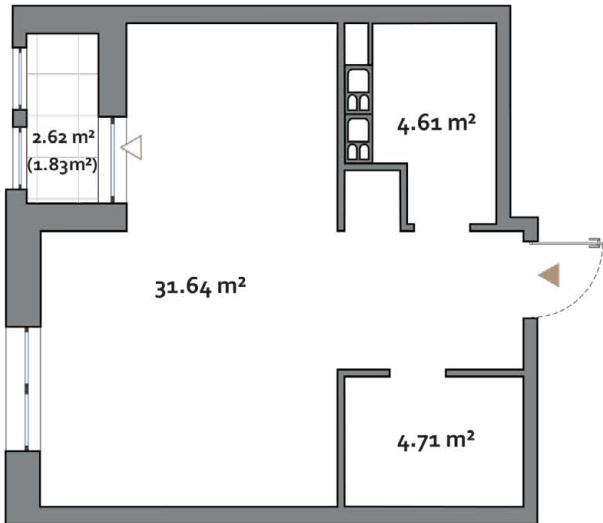
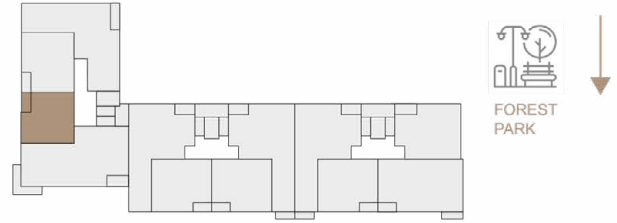


**STUDIO
TYPE B**

APARTMENT AREA 35.97 m² - 40.96 m²
 BALCONY AREA 2.62 (1.83 m²)
 NET AREA 37.80 m² - 42.79 m²

KEY PLAN 2-10 FLOORS



Disclaimer

1. All room dimensions are in metric and measured to structural elements and exclude wall finishes and construction tolerances.
2. All dimensions have been provided by our consultant architects.
3. All materials, dimensions, features and amenities are approximate at the time of printing.
4. Actual area may vary from stated area and unit direction may vary from unit to unit. The developer reserves the right to make revisions to the floor plans and any features, materials, dimensions, drawings and amenities mentioned in this brochure without notice.

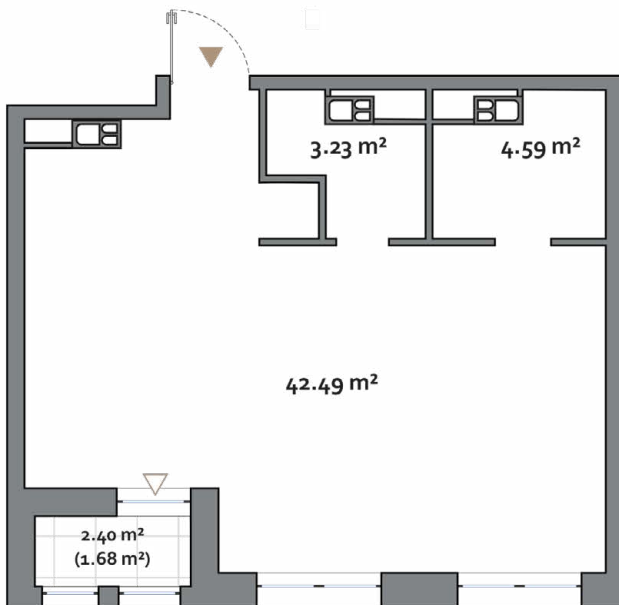
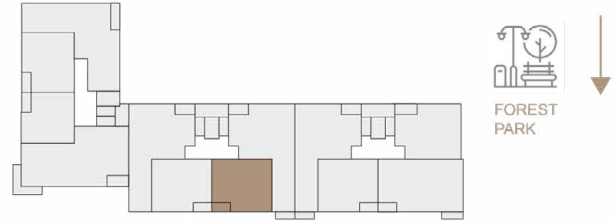
ALTA

1 BR

1 BEDROOM TYPE A

APARTMENT AREA 49.72 m² - 50.31 m²
 BALCONY AREA 2.38 (1.67 m²) - 14.35 (5.22 m²)
 NET AREA 51.37 m² - 55.50 m²

KEY PLAN 1-9 FLOORS



Disclaimer

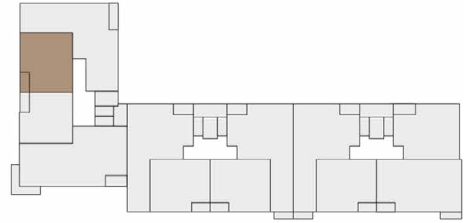
1. All room dimensions are in metric and measured to structural elements and exclude wall finishes and construction tolerances.
2. All dimensions have been provided by our consultant architects.
3. All materials, dimensions, features and amenities are approximate at the time of printing.
4. Actual area may vary from stated area and unit direction may vary from unit to unit. The developer reserves the right to make revisions to the floor plans and any features, materials, dimensions, drawings and amenities mentioned in this brochure without notice.

ALTA

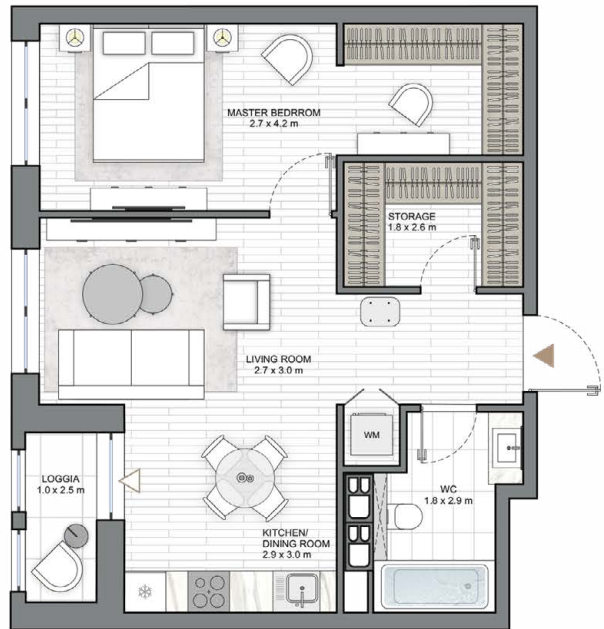
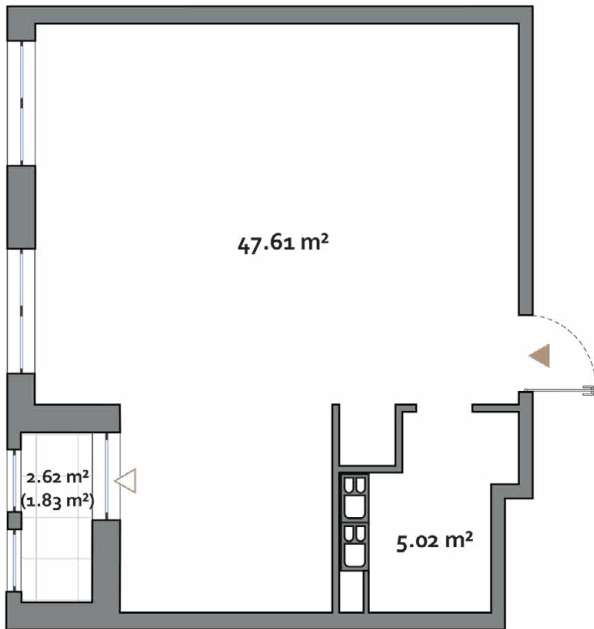
1 BEDROOM TYPE B

APARTMENT AREA 52.63 m²
 BALCONY AREA 2.62 (1.83 m²)
 NET AREA 54.46 m²

KEY PLAN 2-9 FLOORS



FOREST PARK



Disclaimer

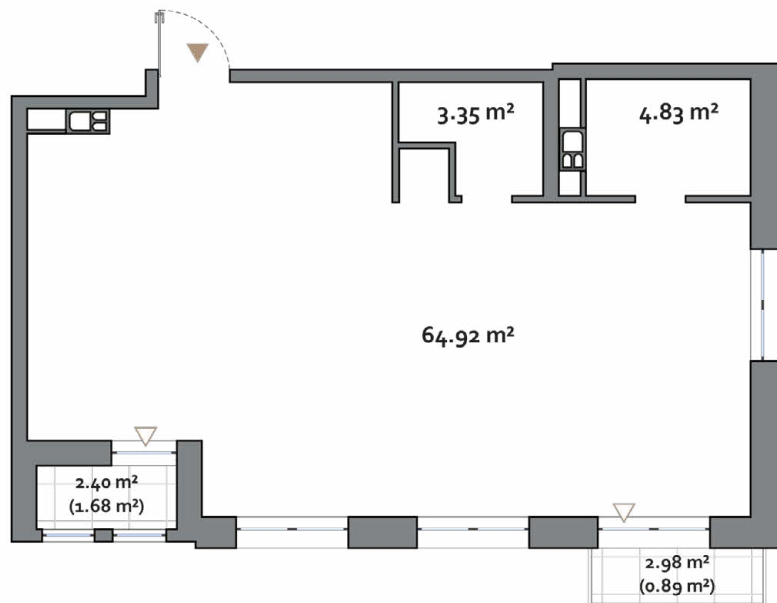
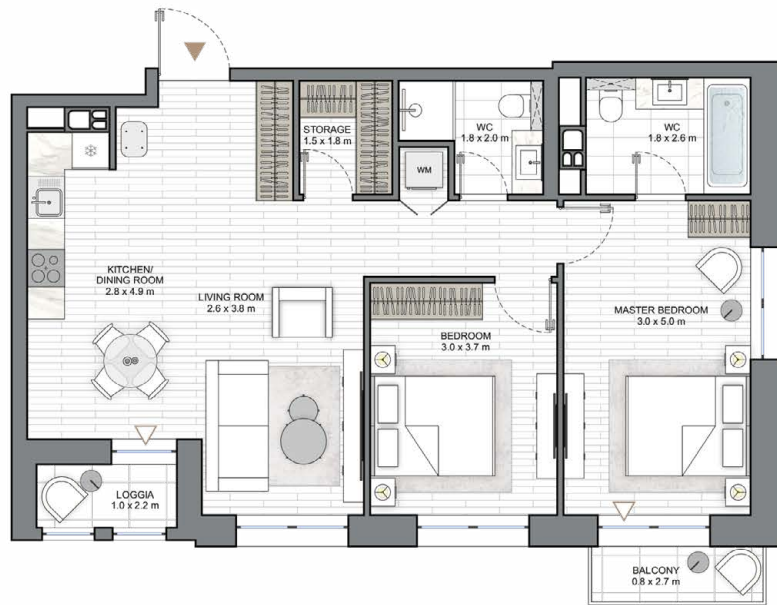
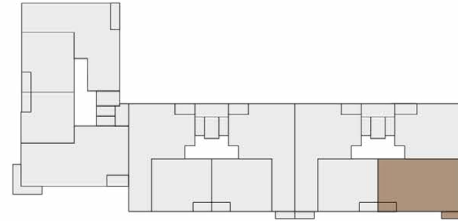
1. All room dimensions are in metric and measured to structural elements and exclude wall finishes and construction tolerances.
2. All dimensions have been provided by our consultant architects.
3. All materials, dimensions, features and amenities are approximate at the time of printing.
4. Actual area may vary from stated area and unit direction may vary from unit to unit. Drawings not to scale. The developer reserves the right to make revisions to the floor plans and any features, materials, dimensions, drawings and amenities mentioned in this brochure without notice.

ALTA

2 BEDROOM TYPE A

APARTMENT AREA..... 72.97 m² - 73.10 m²
 BALCONY AREA..... 5.38 (2.57 m²) - 21.65 (7.41 m²)
 NET AREA..... 75.67 m² - 80.38 m²

KEY PLAN 1-10 FLOORS



Disclaimer

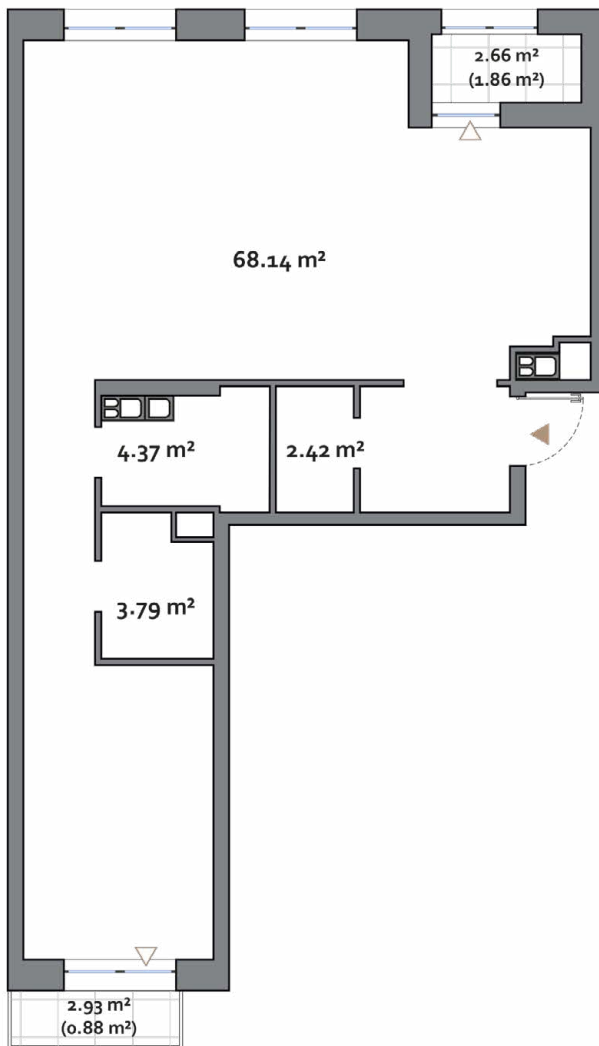
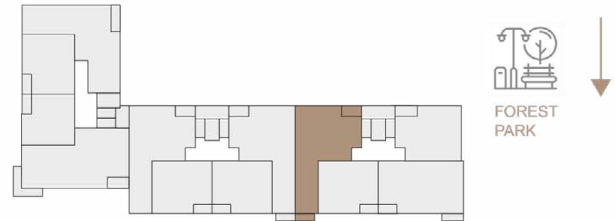
1. All room dimensions are in metric and measured to structural elements and exclude wall finishes and construction tolerances.
2. All dimensions have been provided by our consultant architects.
3. All materials, dimensions, features and amenities are approximate at the time of printing.
4. Actual area may vary from stated area and unit direction may vary from unit to unit. The developer reserves the right to make revisions to the floor plans and any features, materials, dimensions, drawings and amenities mentioned in this brochure without notice.

ALTA

2 BEDROOM TYPE B

APARTMENT AREA 76.94 m² - 78.72 m²
 BALCONY AREA 2.66 (1.86 m²) - 10.24 (4.29 m²)
 NET AREA 80.49 m² - 81.46 m²

KEY PLAN 1-9 FLOORS



Disclaimer

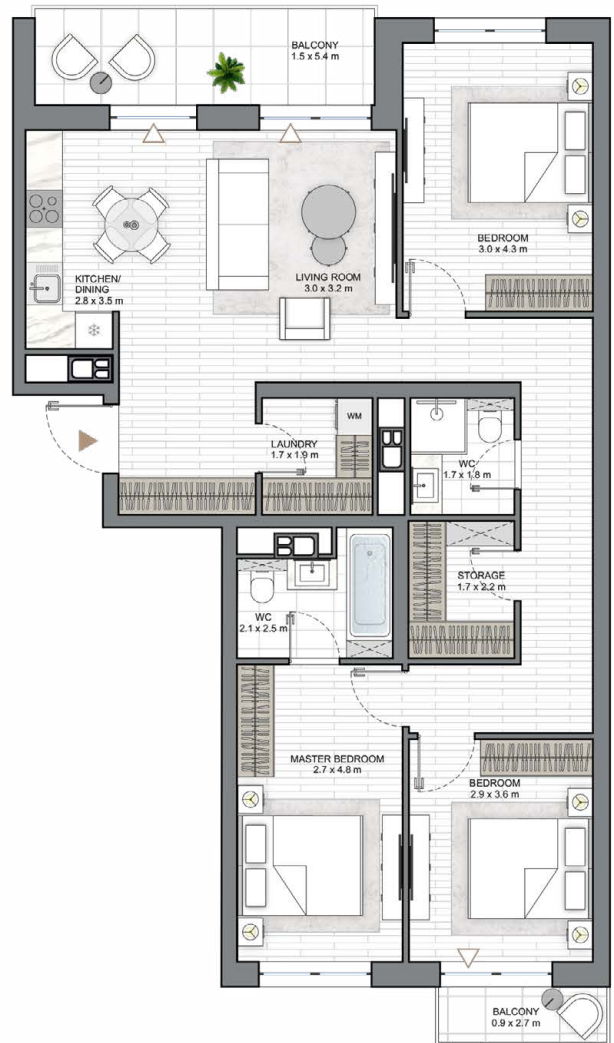
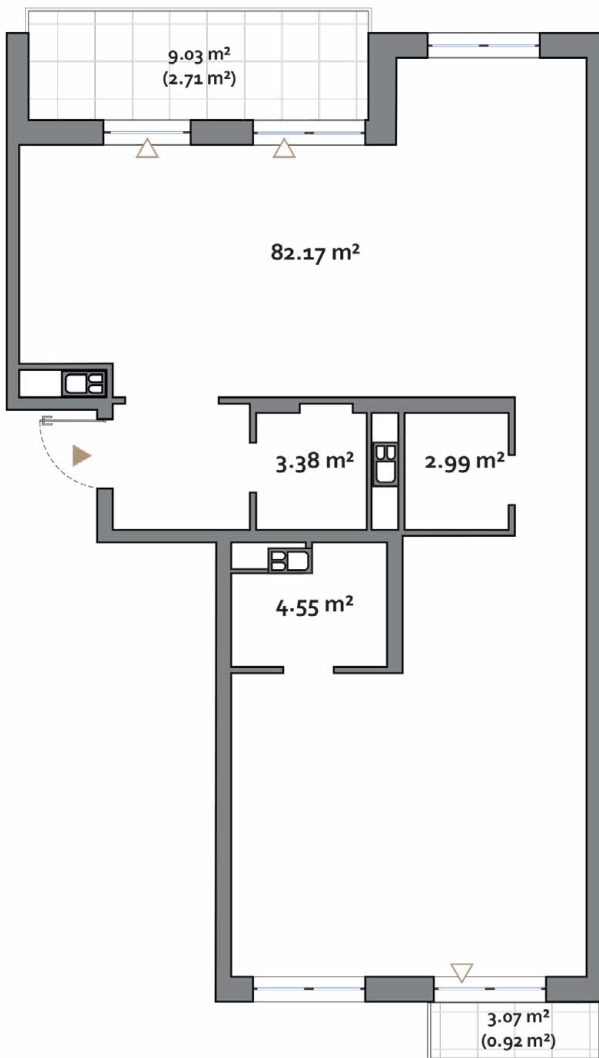
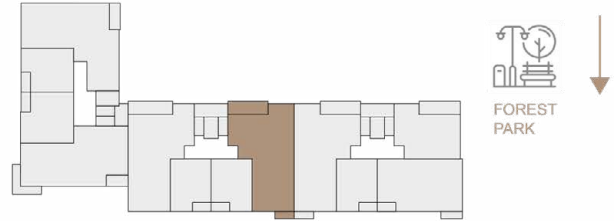
1. All room dimensions are in metric and measured to structural elements and exclude wall finishes and construction tolerances.
2. All dimensions have been provided by our consultant architects.
3. All materials, dimensions, features and amenities are approximate at the time of printing.
4. Actual area may vary from stated area and unit direction may vary from unit to unit. The developer reserves the right to make revisions to the floor plans and any features, materials, dimensions, drawings and amenities mentioned in this brochure without notice.

ALTA

3 BEDROOM TYPE A

APARTMENT AREA..... 89.41 m² - 91.02 m²
 BALCONY AREA..... 10.23 (3.07 m²) - 12.18 (3.65 m²)
 NET AREA..... 92.48 m² - 94.65 m²

KEY PLAN 10 FLOOR



Disclaimer

1. All room dimensions are in metric and measured to structural elements and exclude wall finishes and construction tolerances.
2. All dimensions have been provided by our consultant architects.
3. All materials, dimensions, features and amenities are approximate at the time of printing.
4. Actual area may vary from stated area and unit direction may vary from unit to unit. The developer reserves the right to make revisions to the floor plans and any features, materials, dimensions, drawings and amenities mentioned in this brochure without notice.

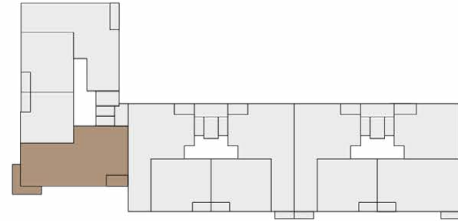
ALTA

3 BR

3 BEDROOM TYPE B

APARTMENT AREA.....93.30 m² - 93.62 m²
 BALCONY AREA.....11.70 (4.66 m²) - 13.42 (4.03 m²)
 NET AREA.....97.65 m² - 97.96 m²

KEY PLAN 2-10 FLOORS



Disclaimer

1. All room dimensions are in metric and measured to structural elements and exclude wall finishes and construction tolerances.
2. All dimensions have been provided by our consultant architects.
3. All materials, dimensions, features and amenities are approximate at the time of printing.
4. Actual area may vary from stated area and unit direction may vary from unit to unit. Drawings not to scale. The developer reserves the right to make revisions to the floor plans and any features, materials, dimensions, drawings and amenities mentioned in this brochure without notice.