

# EDEN



NW NORTH WATERFRONT



# NORTH WATERFRONT

## AN EXCITING NEW DESTINATION FOR BELARUS

The North Waterfront development is a bold new vision for a waterfront community in the heart of the capital that looks to the future whilst drawing inspiration from the neighborhood's rich history.

Mr. Alabbar has diverted the status quo towards prioritizing residents' well-being and experiences, focusing on the importance of quality amenities and resident's lifestyles by bringing the most incredible designers and architects to deliver world-class communities.

35

mins  
From the  
Airport

25

mins  
From the  
City Center

1

mins  
From the  
Ring Road

15

mins  
From the  
National Library

30

mins  
From the  
Railway Station

10

mins  
From the  
Sports Palace



# COMMUNITY FACILITIES



Exhibition Center



Parks



Ice Rink



Schools



Kid's Play Areas



Dog Parks



Cycling Track



Kindergartens



IT University



Supermarkets



Fishing Pier



Medical Centers

— 6 —

NORTH WATERFRONT | EDEN

— 7 —

NORTH WATERFRONT | EDEN



# LAKE SIDE PARK

Residents of North Waterfront will be able to enjoy the modern and healthy environment created by the Lakeside Park.

The park offers a wonderful atmosphere perfect for relaxing and socializing amidst a captivating blend of natural beauty and immersive attractions.



Green Parks



Art SCULPTURES



Amphitheater



Sports Areas



Cycling Track



Logging Trail



Barbecue Areas



Picnic Areas



Fishing Pier



Urban Beach



Kid's Play Area



Cafes



# NEIGHBOURHOOD SQUARE

Redefining lifestyle with an open park catering to the neighborhood, with its bespoke details, curated retail boutiques and avant-garde dining experiences.

This pedestrian friendly space located in the neighboring first phase of construction will also become a space for entertainment and special events.



Retail



Restaurants & Cafes



Outdoor Events



Ice Rink



Art Sculptures



Park



Kid's Play Area



Picnic Areas



# RESIDENTIAL CLUB

North Waterfront provides a unique experience that combines the benefits of neighborhood living with exclusive amenities and services.

The Residential club, conveniently situated within a walking distance, offers elegantly styled spaces exclusive to residents, enriching contemporary living with comfort and effortless access to premium amenities.



Cinema



Games Area



Gym



Meeting Rooms



Co-working Area



Event Room



Children's Place



Cafe



## FOREST PARK AND GREEN TRAILS

---

Lush green spine with walkways, cycling trail and playgrounds for children are characteristic to this phase of North Waterfront.

A Forest Park has been integrated into the development, by designing usable spaces into the existing landscape. This park blends well into the harmonious outdoor spaces that make this neighborhood more green.



Cycling Track



Green Trails



Play Areas



# EDEN





# EDEN

---

EDEN ensures you come home to comfort and splendor.

While drowning in the lush, green landscapes of the neighborhood, EDEN offers quick access to the picturesque Tsna Lake and the lively Neighbourhood Square. The location also features an array of amenities in the nearby vicinity including a kindergarten, a supermarket, cafes and Forest Park with its serene landscape.

Private courtyard includes state-of-the-art facilities with great safety features for kids and a peaceful environment for all.

Eden is home to some of the finest offerings that cater to modern and upscale lifestyles.



# PHASE 2



KINDERGARTEN

SUPERMARKET & MULTI-LEVEL CAR PARK

FOREST PARK

EDEN





## INTERIOR

Refined and luxurious atmosphere is experienced from the very first moments at the EDEN. A warm and elegant pastel color scheme with enchanting design bringing glamor and simplicity to EDEN's overall ambience.

- Designer lobbies with panoramic glazing & elegant styling
- Elegantly designed hallways
- Dedicated storage for strollers and pet paw-washing facilities

EDEN's common areas are designed to impress, offering a seamless blend of style and functionality.



# EDEN

## 1 BEDROOM TYPE A

APARTMENT AREA ..... 35.49 m<sup>2</sup> - 44.90 m<sup>2</sup>  
 BALCONY AREA ..... 2.94 (0.88 m<sup>2</sup>) - 7.63 (2.29 m<sup>2</sup>)  
 NET AREA ..... 36.37 m<sup>2</sup> - 46.01 m<sup>2</sup>



**Disclaimer**

1. All room dimensions are in metric and measured to structural elements and exclude wall finishes and construction tolerances.
2. All dimensions have been provided by our consultant architects.
3. All materials, dimensions, features and amenities are approximate at the time of printing.
4. Actual area may vary from stated area and unit direction may vary from unit to unit. Drawings not to scale. The developer reserves the right to make revisions to the floor plans and any features, materials, dimensions, drawings and amenities mentioned in this brochure without notice.

## 2 BR

# EDEN

## 2 BEDROOM TYPE B

APARTMENT AREA ..... 53.53 m<sup>2</sup> - 70.41 m<sup>2</sup>  
 BALCONY AREA ..... 2.98 (0.88 m<sup>2</sup>) - 9.02 (2.71 m<sup>2</sup>)  
 NET AREA ..... 54.42 m<sup>2</sup> - 71.62 m<sup>2</sup>



**Disclaimer**

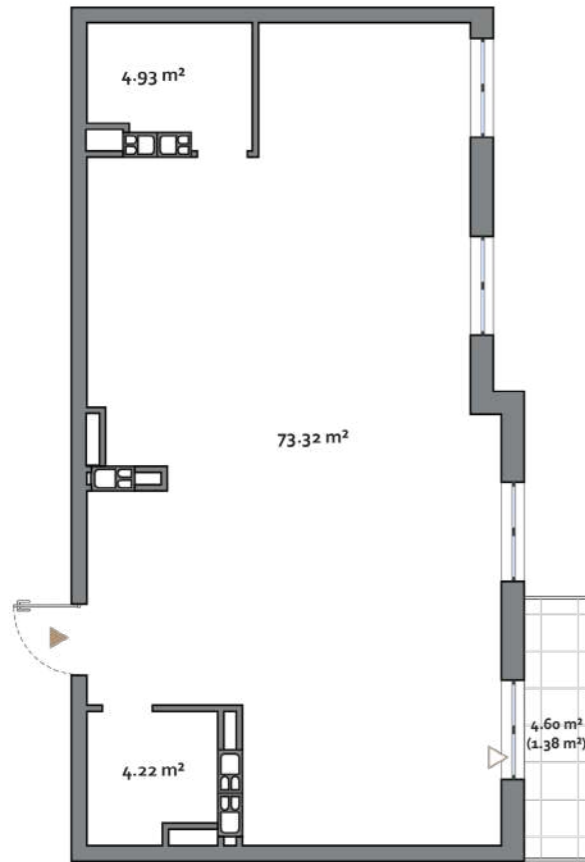
1. All room dimensions are in metric and measured to structural elements and exclude wall finishes and construction tolerances.
2. All dimensions have been provided by our consultant architects.
3. All materials, dimensions, features and amenities are approximate at the time of printing.
4. Actual area may vary from stated area and unit direction may vary from unit to unit. Drawings not to scale. The developer reserves the right to make revisions to the floor plans and any features, materials, dimensions, drawings and amenities mentioned in this brochure without notice.

# EDEN

## 3 BEDROOM TYPE C

APARTMENT AREA ..... 81.68 m<sup>2</sup> - 83.17 m<sup>2</sup>  
 BALCONY AREA ..... 4.26 (1.28 m<sup>2</sup>) - 17.66 (5.29 m<sup>2</sup>)  
 NET AREA ..... 82.97 m<sup>2</sup> - 88.22 m<sup>2</sup>

KEY PLAN 2-10 FLOORS

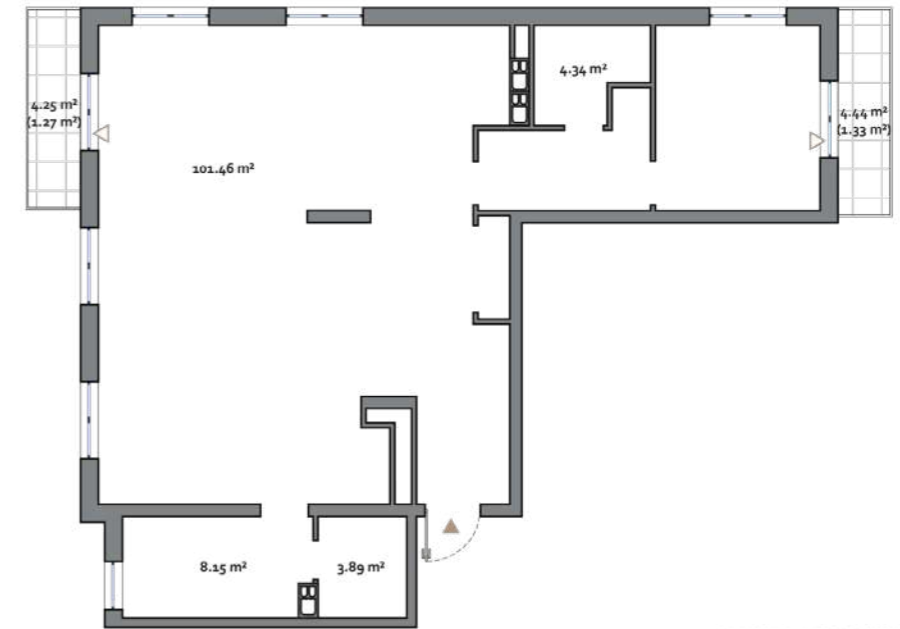


# EDEN

## 3 BEDROOM TYPE D

APARTMENT AREA ..... 94.18 m<sup>2</sup> - 117.84 m<sup>2</sup>  
 BALCONY AREA ..... 3.91 (1.17 m<sup>2</sup>) - 12.72 (3.81 m<sup>2</sup>)  
 NET AREA ..... 96.92 m<sup>2</sup> - 120.44 m<sup>2</sup>

KEY PLAN 1-10 FLOORS



**Disclaimer**

1. All room dimensions are in metric and measured to structural elements and exclude wall finishes and construction tolerances.
2. All dimensions have been provided by our consultant architects.
3. All materials, dimensions, features and amenities are approximate at the time of printing.
4. Actual area may vary from stated area and unit direction may vary from unit to unit. Drawings not to scale. The developer reserves the right to make revisions to the floor plans and any features, materials, dimensions, drawings and amenities mentioned in this brochure without notice.

**Disclaimer**

1. All room dimensions are in metric and measured to structural elements and exclude wall finishes and construction tolerances.
2. All dimensions have been provided by our consultant architects.
3. All materials, dimensions, features and amenities are approximate at the time of printing.
4. Actual area may vary from stated area and unit direction may vary from unit to unit. Drawings not to scale. The developer reserves the right to make revisions to the floor plans and any features, materials, dimensions, drawings and amenities mentioned in this brochure without notice.





# EDEN

NORTHWATERFRONT.BY



International number: +375 17 311-6888

Toll-free number: 8-801-100-3888

North Waterfront Sales Center,  
Sverdlova str. 11, Minsk

**NVW** NORTH  
WATERFRONT