

ARIA



NW NORTH
WATERFRONT

MAIN FEATURES

ARIA is situated in an eco-conscious green neighborhood within North Waterfront, with easy access to main streets and a short walk from the Lakeside Park. Its contemporary design blends seamlessly with the surroundings, crafting an ideal setting to realize your aspirations. The neighborhood also features a kindergarten, other amenity retail such as supermarkets, cafes, and is at close proximity to the lively Neighborhood Square.

A contemporary rendition of the timeless architectural style aptly captures the essence of North Waterfront, blending technology of the future inspired by the rich history of the past.

The advantageous location of ARIA, with its convenient access to the Minsk Ring Road and swift reach to the city center, will enable residents to conserve their most precious resource: time.



35

mins

From the
Airport

25

mins

From the City
Center

15

mins

From the
National Library

10

mins

From the Sports
Palace

1

mins

From the Ring
Road

30

mins

From the Railway
Station



LOCATION



BUILDING AND ITS SURROUNDINGS

- connected to the Forest Park and Green Trails
- 5-min walk to the Neighborhood square in the 1st phase
- 10-min walk to the Lakeside Park
- facade – decorative plaster finish
- energy saving aluminum profiles for the windows and balcony doors
- balconies and terraces
- elevators with access to the basement floor
- storage rooms
- direct access to the courtyard and the main street
- accessible for people of determination
- underground waste disposal system



BUILDING AMENITIES

Parking

- outdoor parking available near the building
- multi-level car park at walking distance
- charging stations for electric vehicles

Courtyard

- private courtyard
- 1150 m² of landscaped area
- children's play area
- bicycle parking

Common areas

- furnished and styled residential lobbies and hallways
- dedicated storage for strollers and pet paw-washing facilities

Basement level

- individual storage rooms allocated to each apartment



APARTMENTS

Flexible layouts of ARIA will provide residents unlimited opportunities to explore various design possibilities.

- enhanced floor plans maximizing effective space utilization
- dedicated laundry room
- tall windows providing plenty of natural light
- ceiling height of 2.7 meters



INSTALLMENT PAYMENT

We offer our customers a selection of the finest financial plans & conditions, allowing them to opt for the most convenient payment method. The cost of the flat remains consistent whether purchased through instalments or credit.

Unmatched installments from the developer

A down payment of 50% is required, with the remaining amount payable in monthly installments of 10%.

Exclusive credit terms from MTBank

A loan term of up to 30 years is available, covering up to 90% of the apartment's value. During the initial 12 months, the interest rate is 0.001%, thereafter adjusting to 13.965% (floating rate linked to the overnight rate of the NBRB). Early repayment is permitted without any penalties or commissions.



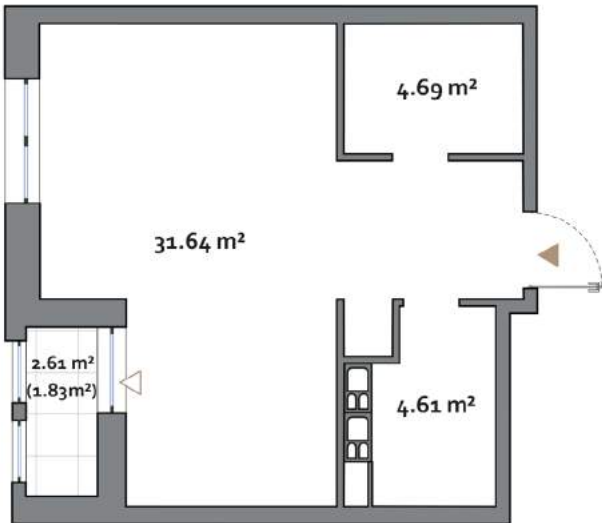
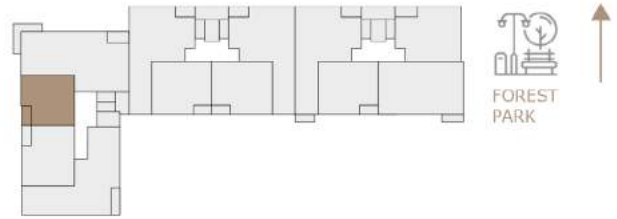
ARIA

1 BR

1 BEDROOM TYPE A

APARTMENT AREA..... 35.97 m² - 40.94 m²
 BALCONY AREA..... 2.61 (1.83 m²)
 NET AREA..... 37.80 m² - 42.77 m²

KEY PLAN 2-10 FLOORS



Disclaimer

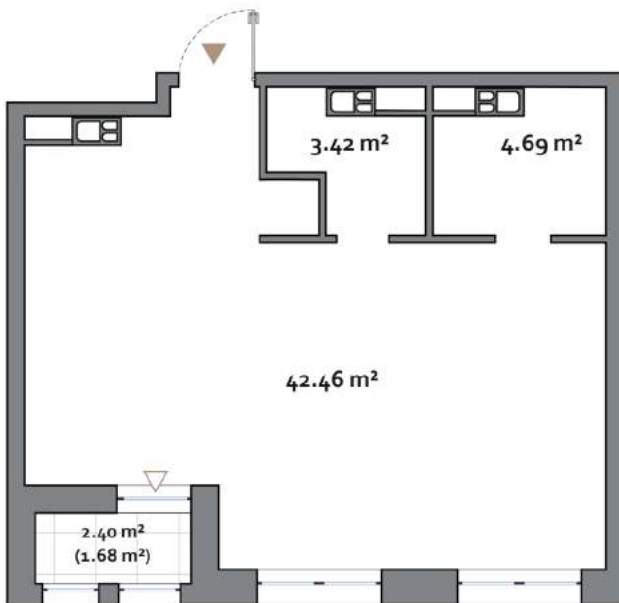
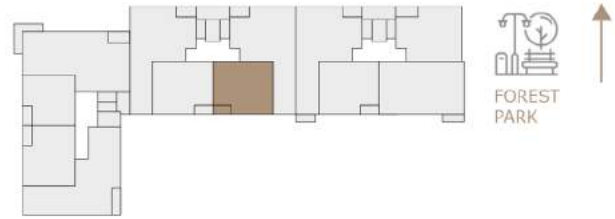
1. All room dimensions are in metric and measured to structural elements and exclude wall finishes and construction tolerances.
2. All dimensions have been provided by our consultant architects.
3. All materials, dimensions, features and amenities are approximate at the time of printing.
4. Actual area may vary from stated area and unit direction may vary from unit to unit. Drawings not to scale. The developer reserves the right to make revisions to the floor plans and any features, materials, dimensions, drawings and amenities mentioned in this brochure without notice.

ARIA

1 BEDROOM TYPE B

APARTMENT AREA 49.73 m² - 50.57 m²
 BALCONY AREA 2.38(1.66 m²) - 11.22(3.36 m²)
 NET AREA 51.41 m² - 55.44 m²

KEY PLAN 1-9 FLOORS



Disclaimer

1. All room dimensions are in metric and measured to structural elements and exclude wall finishes and construction tolerances.
 2. All dimensions have been provided by our consultant architects.
 3. All materials, dimensions, features and amenities are approximate at the time of printing.
 4. Actual area may vary from stated area and unit direction may vary from unit to unit. The developer reserves the right to make revisions to the floor plans and any features, materials, dimensions, drawings and amenities mentioned in this brochure without notice.

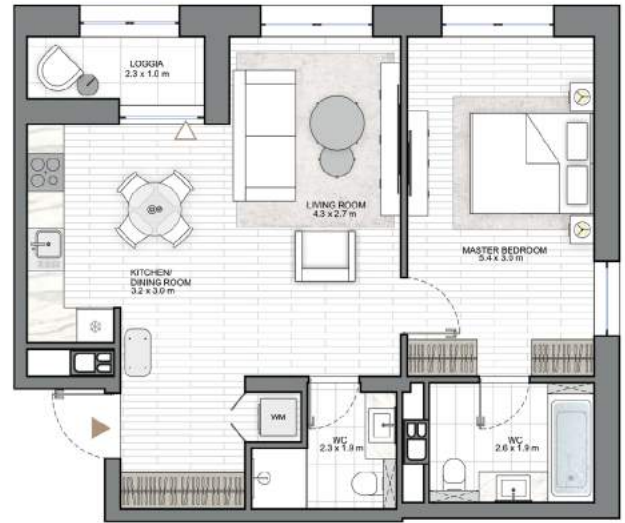
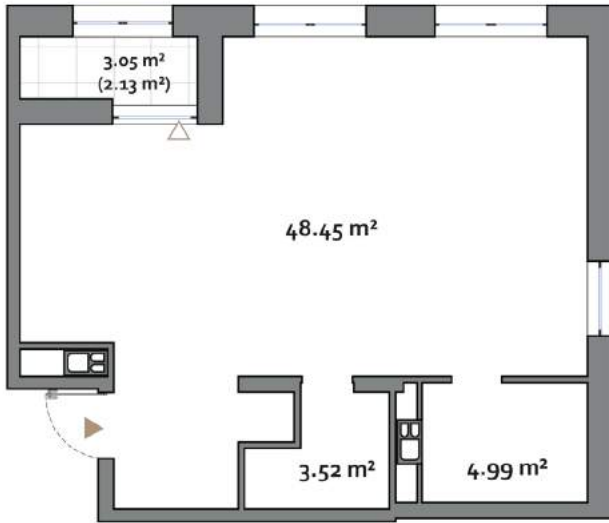
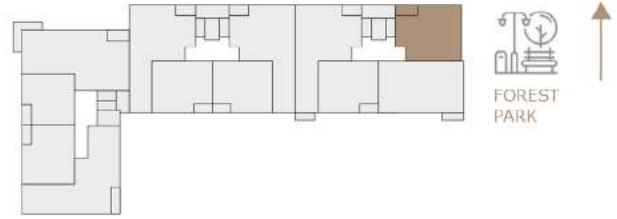
ARIA

1 BR

1 BEDROOM TYPE C

APARTMENT AREA..... 53.93 m² - 57.09 m²
 BALCONY AREA..... 3.05(2.13 m²) - 10.31(3.09 m²)
 NET AREA..... 57.02 m² - 59.22 m²

KEY PLAN 2-30 FLOORS



Disclaimer

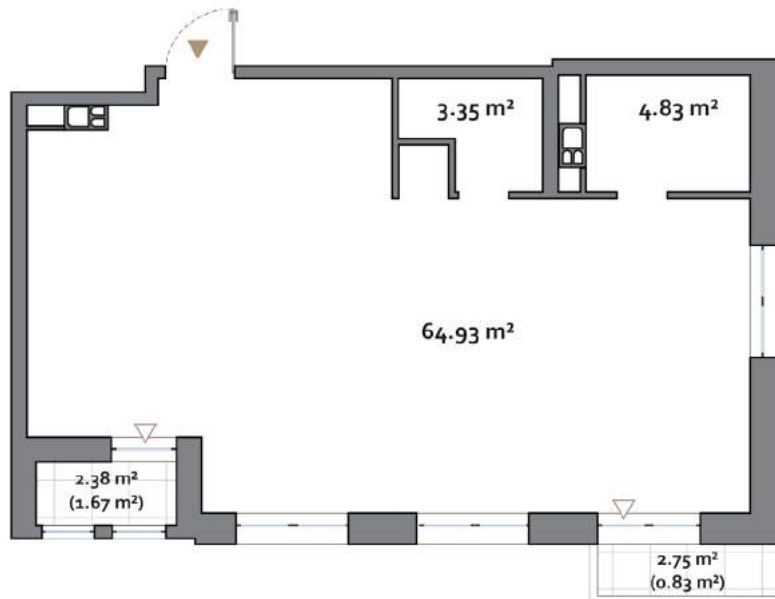
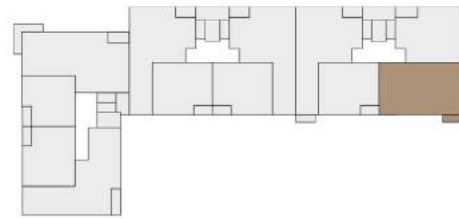
1. All room dimensions are in metric and measured to structural elements and exclude wall finishes and construction tolerances.
2. All dimensions have been provided by our consultant architects.
3. All materials, dimensions, features and amenities are approximate at the time of printing.
4. Actual area may vary from stated area and unit direction may vary from unit to unit. Drawings not to scale. The developer reserves the right to make revisions to the floor plans and any features, materials, dimensions, drawings and amenities mentioned in this brochure without notice.

ARIA

2 BEDROOM TYPE D

APARTMENT AREA..... 72.97 m² - 74.08 m²
 BALCONY AREA..... 5.15(2.51 m²) - 20.37(7.03 m²)
 NET AREA..... 75.61 m² - 80.00 m²

KEY PLAN 1-10 FLOORS



Disclaimer

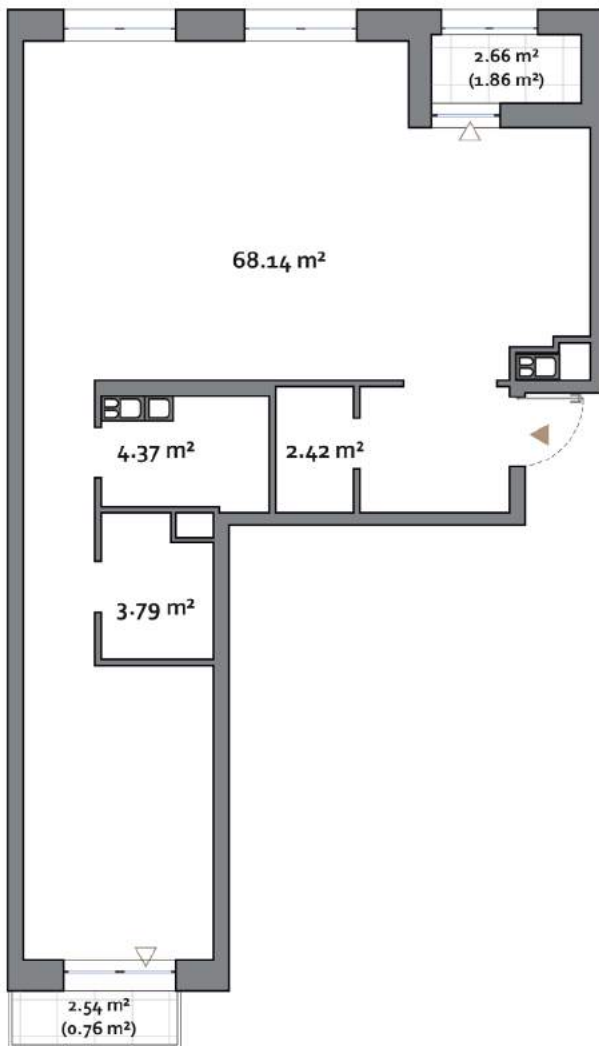
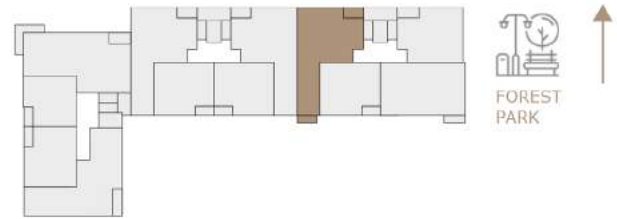
1. All room dimensions are in metric and measured to structural elements and exclude wall finishes and construction tolerances.
2. All dimensions have been provided by our consultant architects.
3. All materials, dimensions, features and amenities are approximate at the time of printing.
4. Actual area may vary from stated area and unit direction may vary from unit to unit. The developer reserves the right to make revisions to the floor plans and any features, materials, dimensions, drawings and amenities mentioned in this brochure without notice.

ARIA

2 BEDROOM TYPE E

APARTMENT AREA 76.94 m² - 78.72 m²
 BALCONY AREA 2.66(1.86 m²) - 9.70(4.13 m²)
 NET AREA 79.61 m² - 81.07 m²

KEY PLAN 2-9 FLOORS



Disclaimer

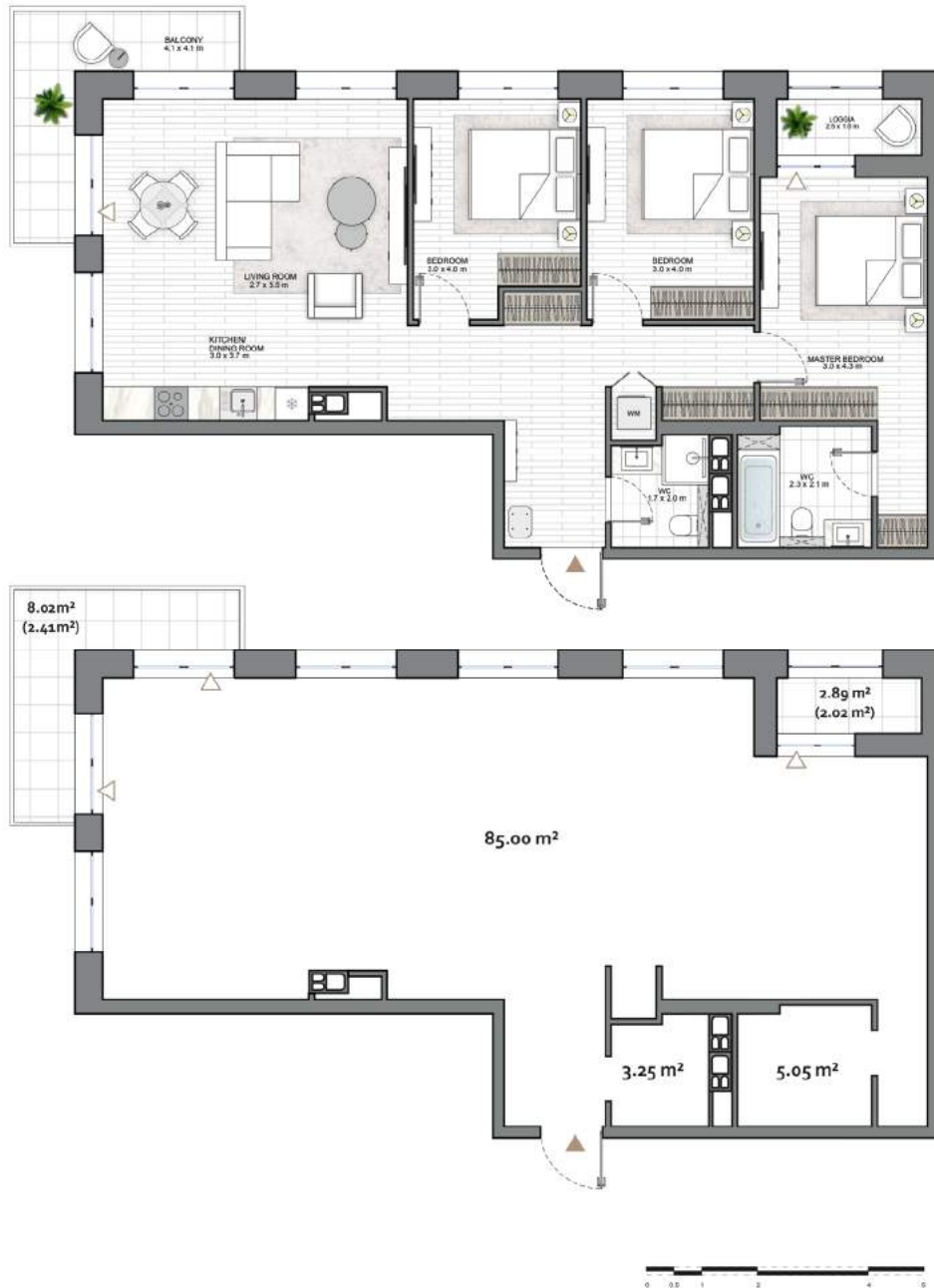
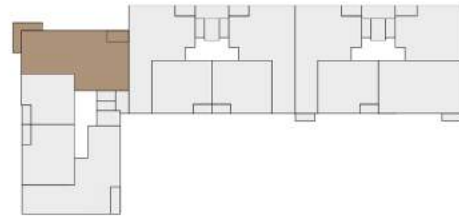
1. All room dimensions are in metric and measured to structural elements and exclude wall finishes and construction tolerances.
2. All dimensions have been provided by our consultant architects.
3. All materials, dimensions, features and amenities are approximate at the time of printing.
4. Actual area may vary from stated area and unit direction may vary from unit to unit. The developer reserves the right to make revisions to the floor plans and any features, materials, dimensions, drawings and amenities mentioned in this brochure without notice.

ARIA

3 BEDROOM TYPE F

APARTMENT AREA 93.30 m² - 93.62 m²
 BALCONY AREA 10.91(4.43 m²)-12.34(3.71 m²)
 NET AREA 97.33 m² - 97.73 m²

KEY PLAN 2-10 FLOORS



Disclaimer

1. All room dimensions are in metric and measured to structural elements and exclude wall finishes and construction tolerances.
2. All dimensions have been provided by our consultant architects.
3. All materials, dimensions, features and amenities are approximate at the time of printing.
4. Actual area may vary from stated area and unit direction may vary from unit to unit. The developer reserves the right to make revisions to the floor plans and any features, materials, dimensions, drawings and amenities mentioned in this brochure without notice.