

parkland 4



About Us

The North Waterfront project is spearheaded by one of the world's largest developers, Mr. Alabbar. A prominent Emirati businessman and visionary leader renowned for his transformative contributions to business, entrepreneurship, and real estate development.

His renowned developments are revered across 16 different countries & are known for being meticulously planned, masterful communities that showcase elegant residential, commercial, retail, and hospitality components. The epitome of luxury is highlighted through state-of-the-art designs and cutting-edge amenities.

Some of his most notable achievements include:

- Burj Khalifa, the tallest building in the world with 205 floors.
- Downtown Dubai, with over 1,800 retail stores, 35,000 homes & a population of 90,000 residents!
- Dubai Mall, the most visited retail destination in the world with its most high-end luxurious brands internationally, F&B and entertainment divisions.
- Over 70 Hotel & Resort chains in the UAE and internationally (ST Regis, Mandarin Oriental, Fairmont, Address, The Bristol, Bluesun, Palace, Locanda, Armani, W Hotel, VIDA, ROVE & Emaar Leisure Group)



Mr. Alabbar
Founder | United Arab Emirates

Part of the Journey

BURJ KHALIFA



DUBAI MALL



DOWNTOWN DUBAI



DUBAI MARINA



Our Global Presence

16
COUNTRIES

70+
HOTELS
& RESORTS

150^k
HOMES

9
SHOPPING
MALLS

NORTH WATERFRONT

An Exciting New Destination For Belarus

The North Waterfront development is a bold new vision for a waterfront community in the heart of the capital that looks to the future whilst drawing inspiration from the neighborhood's rich history.

Mr. Alabbar has diverted the status quo towards prioritizing residents' well-being and experiences, focusing on the importance of quality amenities and resident's lifestyles by bringing the most incredible designers and architects to deliver world-class communities.



35mins
From the Airport

25mins
From the City Center

15mins
From the National Library

10mins
From the Sports Palace

1mins
From the Ring Road





Your Social Sanctuary

North Waterfront provides a nurturing community that enhances residents' quality of life by offering top-notch amenities. It is a unique and carefully planned premium lifestyle community developed as a city within a city.



RESTAURANTS AND
CAFES



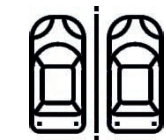
RETAIL OUTLETS



50+
LAKESIDE RESIDENCES



50%
GREEN AREA



PARKING
ON-STREET & BASEMENT



ROI
BENEFICIAL RETURN
ON INVESTMENT



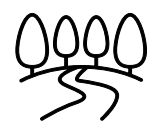
Community Facilities



Exhibition Centre



Public Parks



Neighborhood Square



Ice Rink



Mall



Supermarkets



Cycling Tracks



Retail Outlets



Kids Play Areas



IT University



Jogging Tracks



Hotels



Restaurants & Cafes



Schools



Polyclinic



Kindergartens



Art District



Church



Dog Parks



Fishing Pier

Residential Club

North Waterfront provides a unique experience that combines the benefits of neighborhood living with exclusive amenities and services.

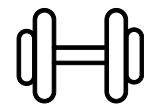
The neighbored residential club is located on the ground floor of **Parkland 4**, with its elegantly styled spaces, will be exclusive to the residents and shall enrich modern day living with comfort and easy access to premium amenities.



CAFE



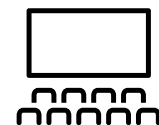
CO-WORKING
SPACE



GYM



MEETING ROOM



CINEMA



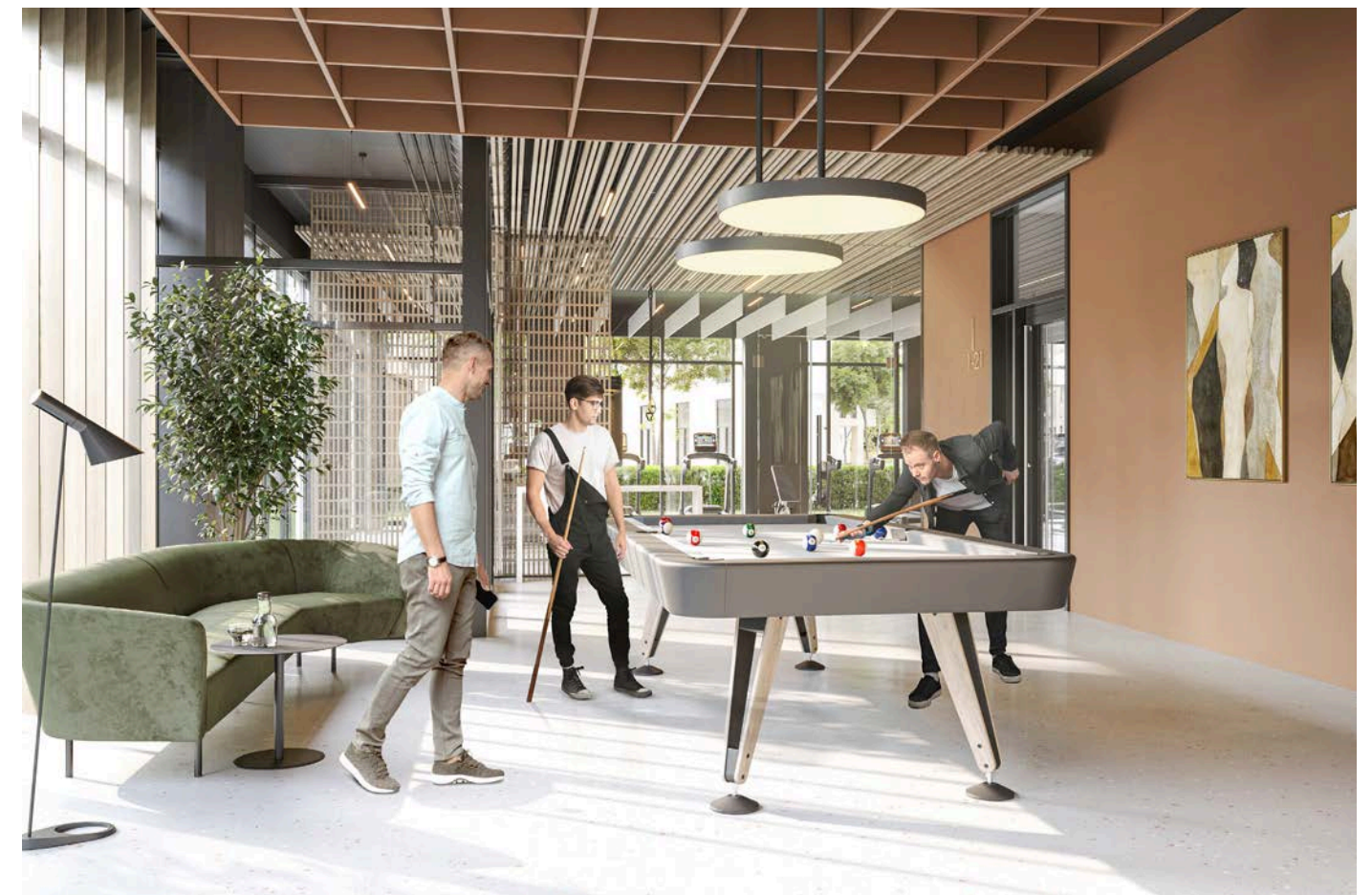
CHILDREN'S
PLACE



PARTY HALL



GAMES AREA













Lakeside Park

Residents of North Waterfront will be able to enjoy the modern and healthy environment created by the lakeside park. The park offers a wonderful atmosphere perfect for relaxing and socializing amidst a captivating blend of natural beauty and immersive attractions.



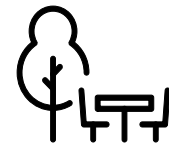
FISHING PIER



PICNIC AREAS



KID'S PLAY AREA



GREEN PARKS



CYCLING TRACK



CAFES



JOGGING TRAIL



BARBECUE AREAS



URBAN BEACH



ART



AMPHITHEATER



PUBLIC BATHROOMS



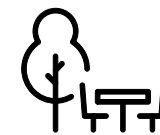




Neighborhood Square

Redefining lifestyle with an open park catering to the neighborhood, with its bespoke details, curated retail boutiques and avant-garde dining experiences.

This pedestrian friendly space will also become a space for entertainment and special events.



PARK



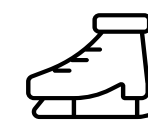
RETAIL



RESTAURANTS
& CAFES



KIDS PLAY
AREAS



ICE RINK



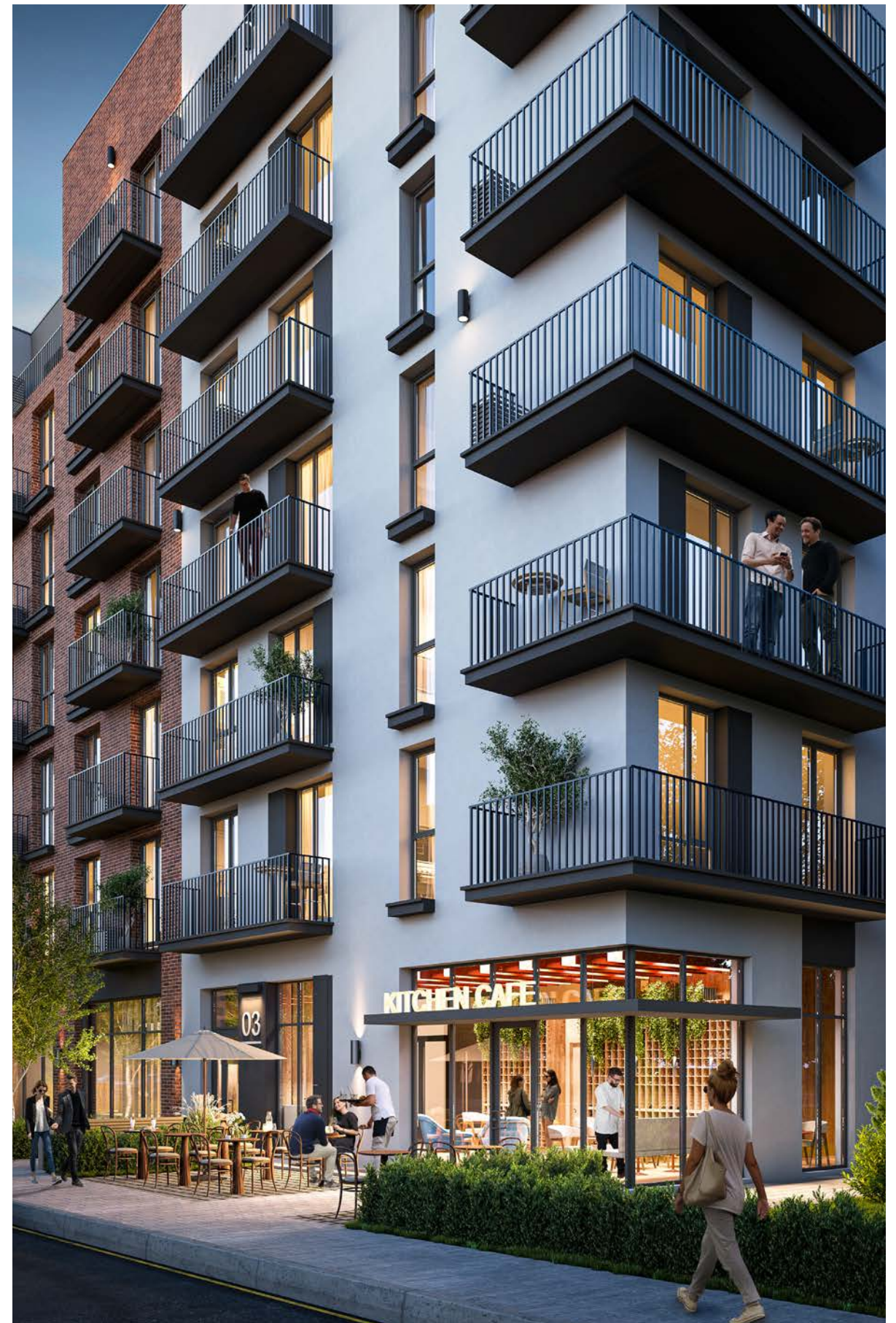
OUTDOOR
EVENTS



parkland 4

Located in a perfect urban setting and an elegant neighborhood, Parkland 4 is a harmonious blend of modern architecture and natural surroundings.

Designed to seamlessly integrate with the environment, the building features breathtaking panoramic views of the surrounding greenery and the lakeside, allowing residents to always feel connected to nature. Each residential unit has been planned with spacious living areas, private balconies and amenities, providing residents with a tranquil retreat from the bustling world outside. Conveniently located with proximity to retail, lakeside park, schools and other amenities within North Waterfront.







Green Paradise



Interior

Parkland 4 will feature exquisite interior finishes that will leave you utterly captivated!

Living and dining areas offer abundant natural light, and the apartment comes with laminated tile flooring, modern kitchen, separate laundry space and master bedroom with en-suite bathroom.

The harmonious combination of modern aesthetics and practicality ensures an efficient and elegant home.





Exterior

The facade, designed in contemporary style, uses texture to accentuate the design with warm brick toned finishes.

With its attention to architectural detail and stylish finishes, Parkland 4 stands as a stunning testament to modern urban living.

The ground floor also features a neighborhood Residential Club, with amenities such as multi-purpose room, gymnasium, sauna, games room, co-working spaces, cafe for all residents in this district.

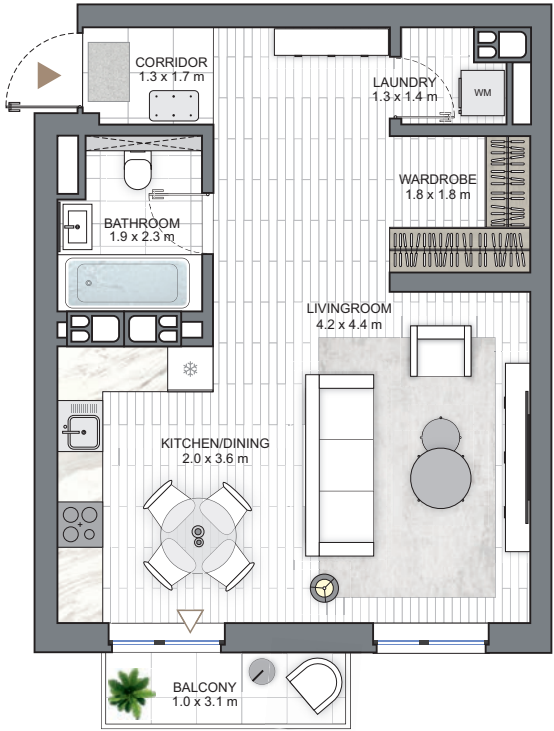
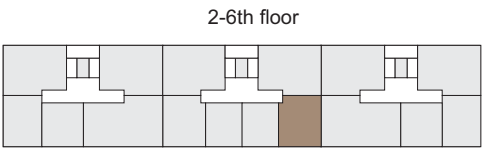


parkland 4

KEY PLAN

1 BEDROOM
TYPE A

APARTMENT AREA.....30.82 - 42.44 m²
BALCONY AREA.....0.75 - 2.27 m²
NET AREA.....31.57 - 43.25 m²



Disclaimer

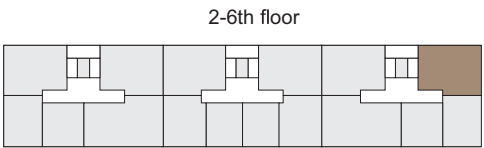
1. All room dimensions are in metric and measured to structural elements and exclude wall finishes and construction tolerances.
2. All dimensions have been provided by our consultant architects.
3. All materials, dimensions, features and amenities are approximate at the time of printing.
4. Actual area may vary from stated area and unit direction may vary from unit to unit. Drawings not to scale. The developer reserves the right to make revisions to the floor plans and any features, materials, dimensions, drawings and amenities mentioned in this brochure without notice.

parkland 4

KEY PLAN

2 BEDROOM
TYPE B

APARTMENT AREA.....47.48 - 55.48 m²
BALCONY AREA.....0.75 - 3.34 m²
NET AREA.....50.82 - 56.23 m²



Disclaimer

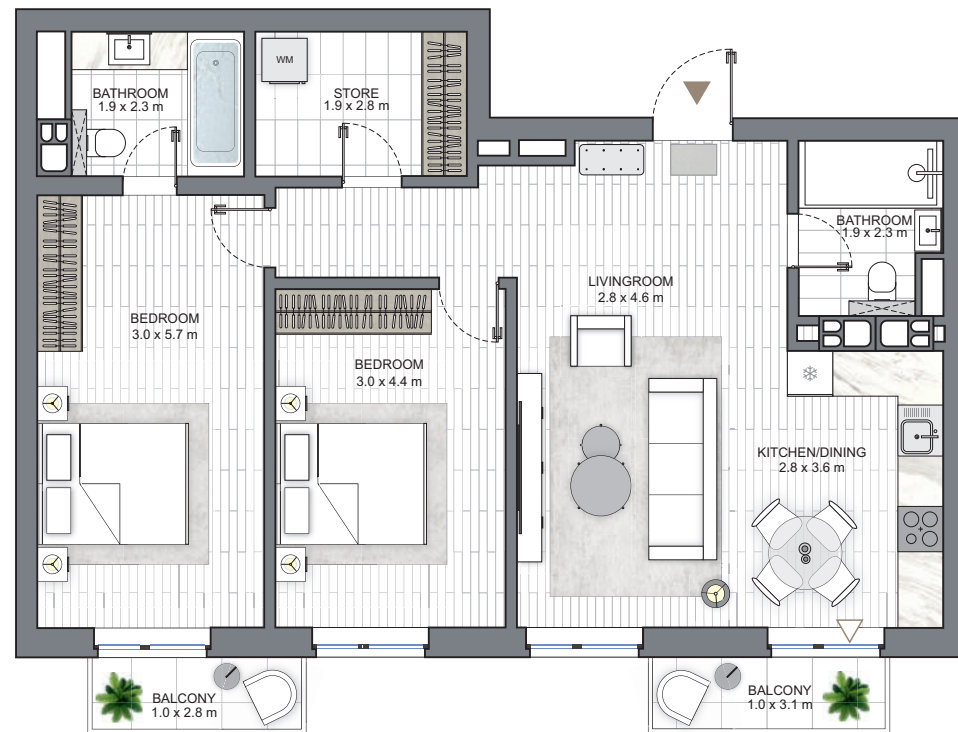
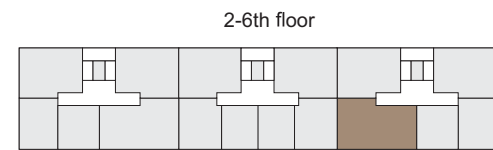
1. All room dimensions are in metric and measured to structural elements and exclude wall finishes and construction tolerances.
2. All dimensions have been provided by our consultant architects.
3. All materials, dimensions, features and amenities are approximate at the time of printing.
4. Actual area may vary from stated area and unit direction may vary from unit to unit. Drawings not to scale. The developer reserves the right to make revisions to the floor plans and any features, materials, dimensions, drawings and amenities mentioned in this brochure without notice.

parkland 4

KEY PLAN

3 BEDROOM TYPE C

APARTMENT AREA.....67.83 - 74.28 m²
BALCONY AREA.....1.5 - 3.25 m²
NET AREA.....71.09 - 75.78 m²



Disclaimer

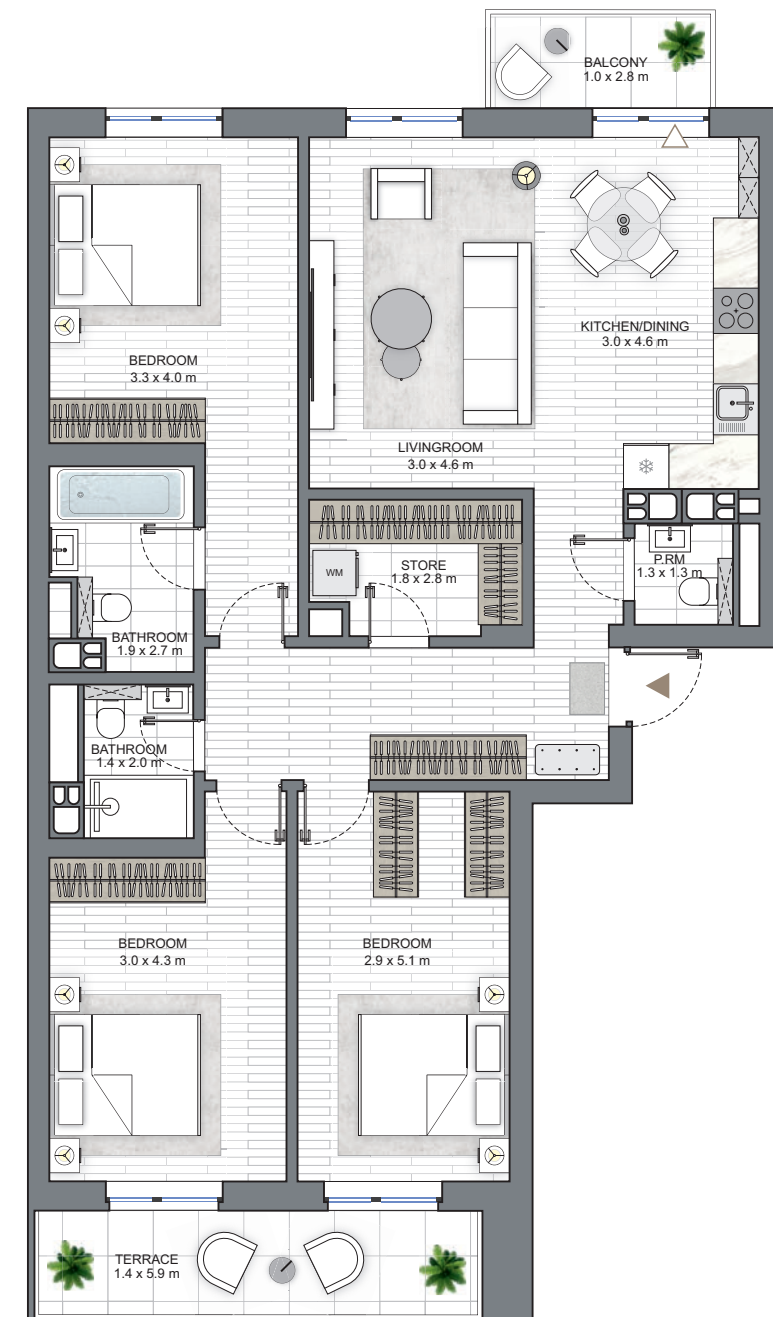
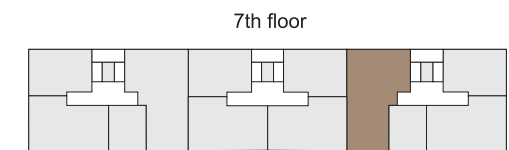
1. All room dimensions are in metric and measured to structural elements and exclude wall finishes and construction tolerances.
2. All dimensions have been provided by our consultant architects.
3. All materials, dimensions, features and amenities are approximate at the time of printing.
4. Actual area may vary from stated area and unit direction may vary from unit to unit. Drawings not to scale. The developer reserves the right to make revisions to the floor plans and any features, materials, dimensions, drawings and amenities mentioned in this brochure without notice.

parkland 4

KEY PLAN

4 BEDROOM TYPE D

APARTMENT AREA.....92.11 m²
BALCONY AREA.....3.43 m²
NET AREA.....95.53 m²



Disclaimer

1. All room dimensions are in metric and measured to structural elements and exclude wall finishes and construction tolerances.
2. All dimensions have been provided by our consultant architects.
3. All materials, dimensions, features and amenities are approximate at the time of printing.
4. Actual area may vary from stated area and unit direction may vary from unit to unit. Drawings not to scale. The developer reserves the right to make revisions to the floor plans and any features, materials, dimensions, drawings and amenities mentioned in this brochure without notice.

parkland 4



northwaterfront

Toll-free number: 8-801-100-3888

International number: +375 17 311-6888

North Waterfront Sales Center, Sverdlova str. 11, Minsk
northwaterfront.by

NW NORTH
WATERFRONT