

# parkland 2

## CUSTOMER FACT SHEET



# Key Features

Designed to seamlessly integrate with the environment, the building features breathtaking panoramic views of the surrounding greenery and the lakeside, allowing residents to always feel connected to nature. Each residential unit has been planned with spacious living areas, private balconies and amenities, providing residents with a tranquil retreat from the bustling world outside. Conveniently located with proximity to retail, lakeside park, schools and other amenities within North Waterfront.

Parkland 2 is a ground +6 floor building offering 87 apartments, ranging from one-bedroom to four-bedroom units.

---

## PERFECTLY CONNECTED

---

**35** mins

From the Airport

**25** mins

From the City Center

**15** mins

From the National Library

**10** mins

From the Sports Palace

**1** mins

From the Ring Road



# Building Design

## FACADE:

- Ventilated porcelain stoneware in ground floor, decorative plaster (imitation of clinker brick) and decorative plaster with paint.
- Aluminium windows are sliding and openable.
- Metal balustrades on balconies.
- Enclosures for outdoor AC units.
- Elegantly styled lobbies with mailboxes and connecting street side entrance with courtyard side entrance.
- Secure courtyard.
- Accessible for people of determination.
- 46 m distance to adjacent building face.
- Dedicated storage for bicycles.
- Garbage disposal within the outdoor parking area.



# Building Amenities

## PARKING

- On-street parking near the building

## COURTYARD

- Landscaped outdoor courtyard 4000 sqm
- Sports playground
- Kids play area
- Relaxation area

## GROUND FLOOR

- Lobbies in each core
- There are strollers storage rooms in each core
- There are rooms for cleaning and washing dogs paws after walking
- Residential units

## BASEMENT LEVEL

- Storage rooms for each apartments



# *Efficient Apartment Design*

- Apartment clear height 2.75m
- Each apartment has a balcony or loggia
- Apartments with terraces on the top floor
- 3 elevators, 1 for each core
- Maximized premium views
- Taller windows in all rooms

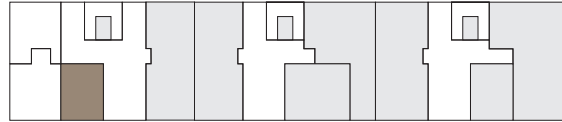


# parkland 2

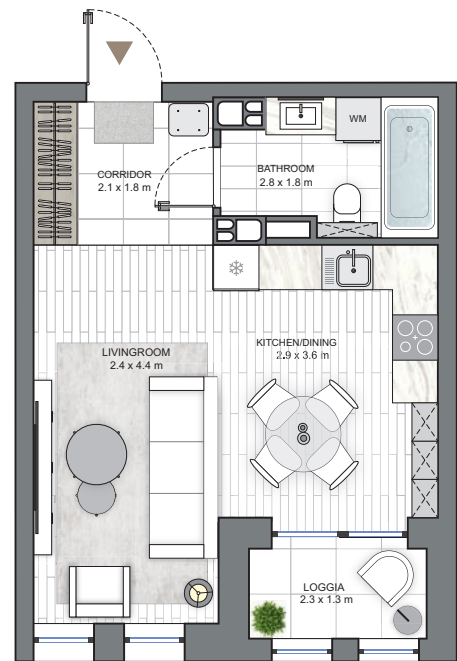
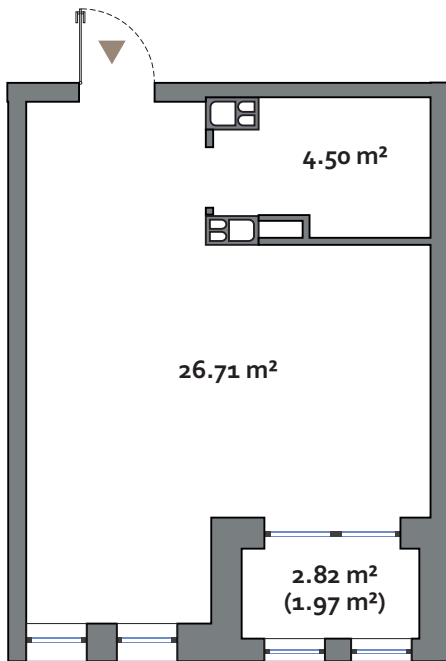
## 1 BEDROOM TYPE A

APARTMENT AREA .....31.21 - 41.97 m<sup>2</sup>  
 BALCONY AREA .....2.28 m<sup>2</sup> (1.97 m<sup>2</sup>) - 11.81m<sup>2</sup> (3.54 m<sup>2</sup>)  
 NET AREA .....33.18 m<sup>2</sup> - 42.91 m<sup>2</sup>

## KEYPLAN



LAKESIDE PARK  
→



### Disclaimer

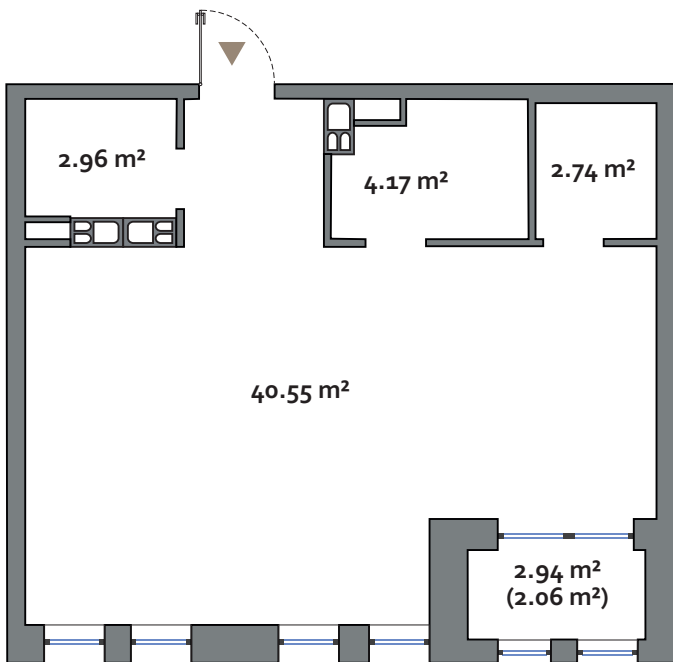
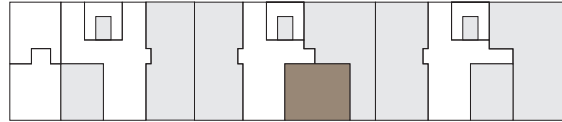
1. All room dimensions are in metric and measured to structural elements and exclude wall finishes and construction tolerances.
2. All dimensions have been provided by our consultant architects.
3. All materials, dimensions, features and amenities are approximate at the time of printing.
4. Actual area may vary from stated area and unit direction may vary from unit to unit. Drawings not to scale. The developer reserves the right to make revisions to the floor plans and any features, materials, dimensions, drawings and amenities mentioned in this brochure without notice.

# parkland 2

## 2 BEDROOM TYPE B

APARTMENT AREA .....50.42 - 53.59 m<sup>2</sup>  
 BALCONY AREA .....2.94 m<sup>2</sup> (2.06 m<sup>2</sup>) - 5.33m<sup>2</sup> (1.60 m<sup>2</sup>)  
 NET AREA .....52.48 m<sup>2</sup> - 55.88 m<sup>2</sup>

## KEYPLAN



### Disclaimer

1. All room dimensions are in metric and measured to structural elements and exclude wall finishes and construction tolerances.
2. All dimensions have been provided by our consultant architects.
3. All materials, dimensions, features and amenities are approximate at the time of printing.
4. Actual area may vary from stated area and unit direction may vary from unit to unit. Drawings not to scale. The developer reserves the right to make revisions to the floor plans and any features, materials, dimensions, drawings and amenities mentioned in this brochure without notice.



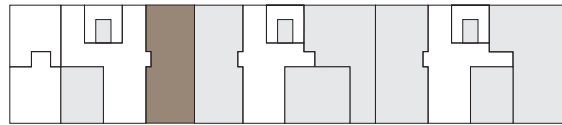
# parkland 2

3BR

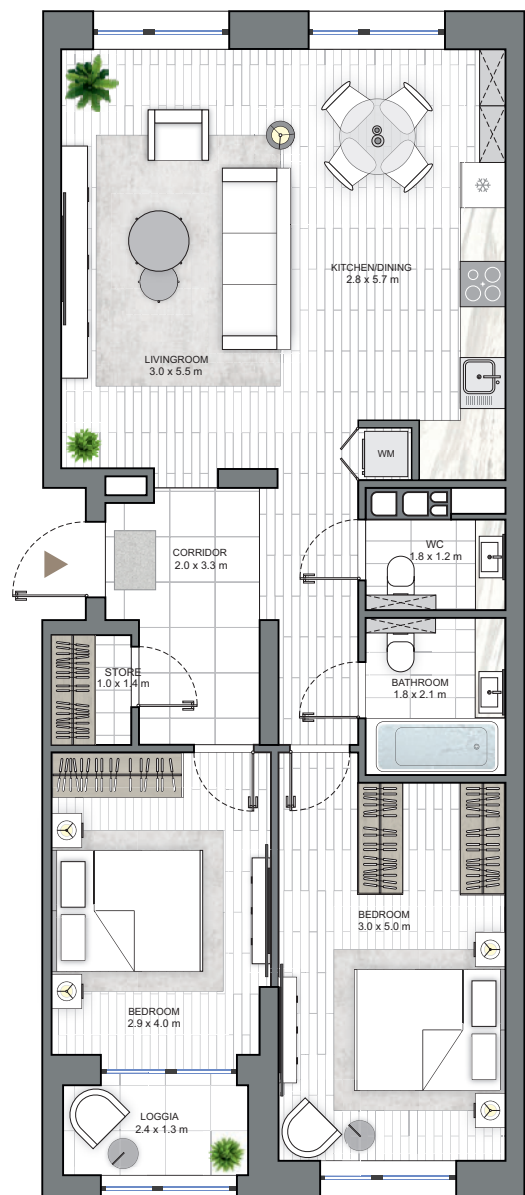
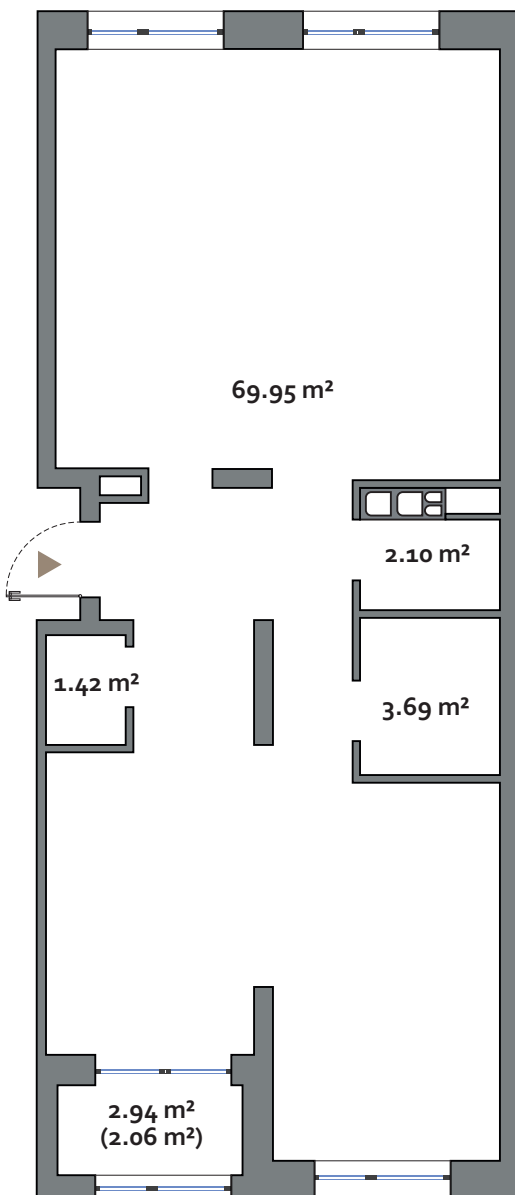
## 3 BEDROOM TYPE C

APARTMENT AREA .....77.16 m<sup>2</sup>  
 BALCONY AREA .....2.94 m<sup>2</sup> (2.06 m<sup>2</sup>)  
 NET AREA .....79.22 m<sup>2</sup>

## KEYPLAN



LAKESIDE PARK



### Disclaimer

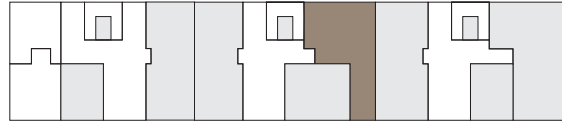
1. All room dimensions are in metric and measured to structural elements and exclude wall finishes and construction tolerances.
2. All dimensions have been provided by our consultant architects.
3. All materials, dimensions, features and amenities are approximate at the time of printing.
4. Actual area may vary from stated area and unit direction may vary from unit to unit. Drawings not to scale. The developer reserves the right to make revisions to the floor plans and any features, materials, dimensions, drawings and amenities mentioned in this brochure without notice.

# parkland 2

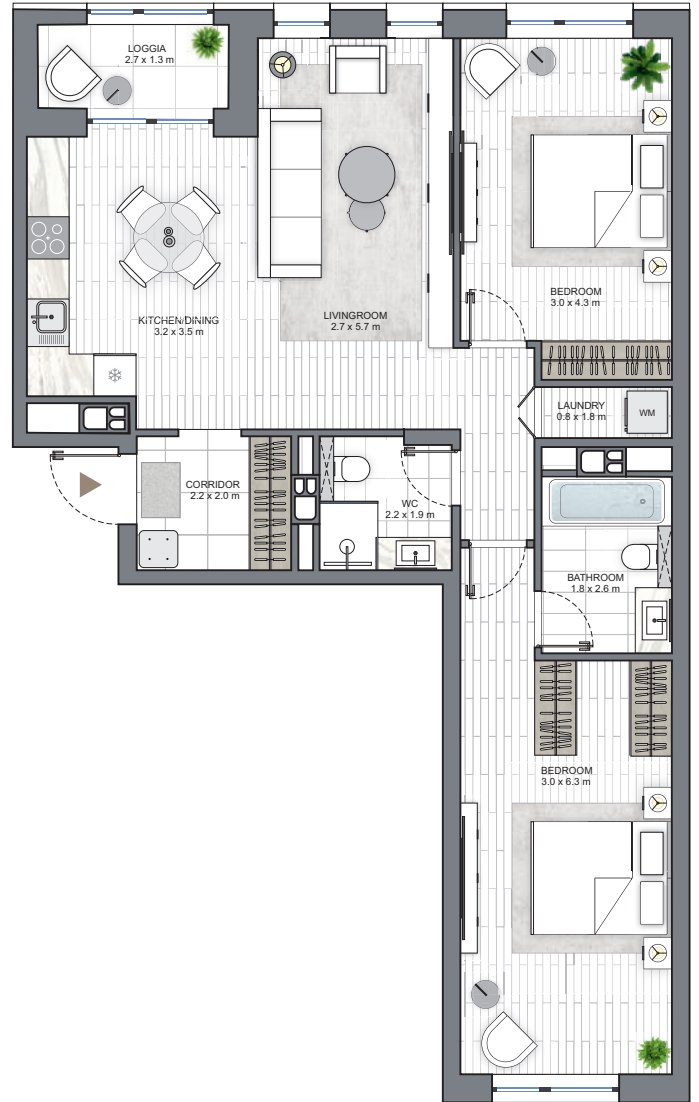
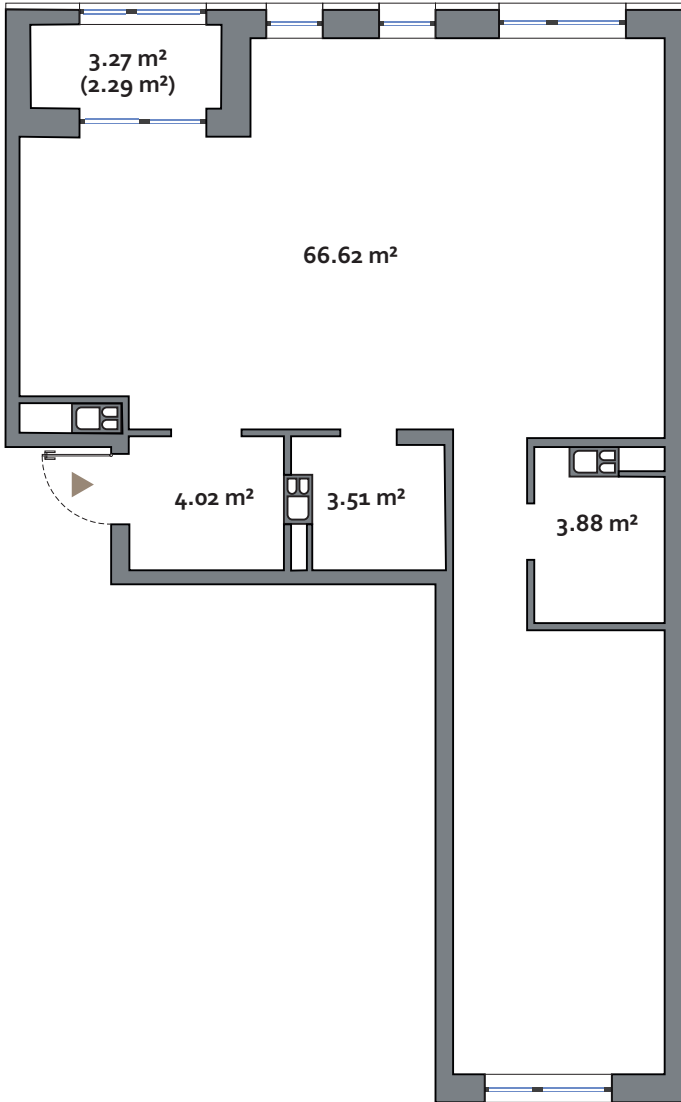
## 4 BEDROOM TYPE D

APARTMENT AREA .....73.42 - 78.03 m<sup>2</sup>  
 BALCONY AREA .....3.27 m<sup>2</sup> (2.29 m<sup>2</sup>) - 9.98m<sup>2</sup> (3.15 m<sup>2</sup>)  
 NET AREA .....76.41 m<sup>2</sup> - 80.78 m<sup>2</sup>

## KEYPLAN



LAKESIDE PARK  
→



### Disclaimer

1. All room dimensions are in metric and measured to structural elements and exclude wall finishes and construction tolerances.
2. All dimensions have been provided by our consultant architects.
3. All materials, dimensions, features and amenities are approximate at the time of printing.
4. Actual area may vary from stated area and unit direction may vary from unit to unit. Drawings not to scale. The developer reserves the right to make revisions to the floor plans and any features, materials, dimensions, drawings and amenities mentioned in this brochure without notice.